

Flight Procedures Cover Page	Task Action: P-NOTAM	Task Type: IAP	Estimated Chart Date: 11/05/2020	APWS Task ID: B02E17E24937484D894E3479A16832E2	APWS Project ID: A7DC5EE3FA67495C9B0D0200EDDBE901
Procedure: RNAV (GPS) RWY 31 ORIG-C		Enroute: NO	Specialist: Fowler, Shane		Agreement Number:
Airport ID: KLXL	Airport Name: LITTLE FALLS/MORRISON COUNTY- LINDBERGH FLD		Airport City: LITTLE FALLS		State: MN
Facility ID:	Facility Type:	Flight Inspection Remark Type:			
<div>Procedure Comments: P-NOTAM.</div> <div>PROCESSED IAW AIRCRAFT OPERATIONS GROUP (AJW-33) MEMO, OCTOBER 3, 2018, SUBJECT: FLIGHT INSPECTION REVIEW NOTREQUIRED.</div> <div>CONTACT: ALLAN WILL 405-954-6103.</div> <div>QUALITY 6 CHECKED SN 8/5/20</div> <div>QUALITY 26 CHECKED</div>					

OLD

LITTLE FALLS, MINNESOTA

AL-6156 (FAA)

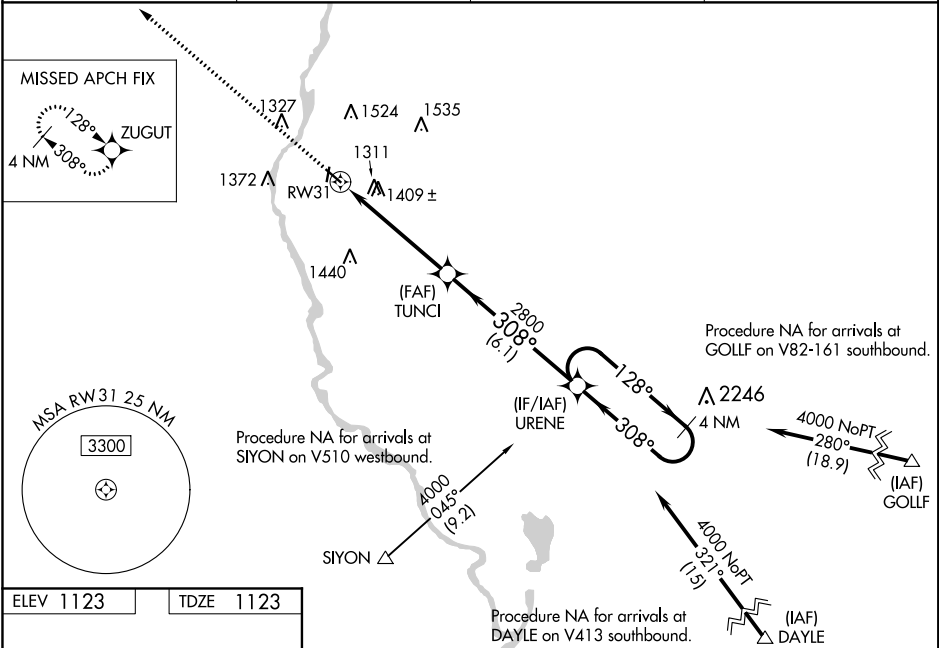
20142

WAAS CH 93920 W31A	APP CRS 308°	Rwy Idg TDZE 1123 Apt Elev 1123	4010
--	------------------------	---	-------------

RNAV (GPS) RWY 31
LITTLE FALLS/MORRISON COUNTY-LINDBERGH FIELD (LXL)

RNP APCH.	MISSED APPROACH: Climb to 3000 direct ZUGUT and hold.
-----------	---

AWOS-3 119.45	MINNEAPOLIS CENTER 118.05 239.0	GCO 121.725	UNICOM 122.8 (CTAF) 0
-------------------------	---	-----------------------	---------------------------------



REIL Rws 13 and 31
MIRL Rwy 13-31

3000

↑

ZUGUT

✱

VGSI and RNAV glidepath not coincident
(VGSI Angle 3.00/TCH 25).

4 NM
Holding Pattern

TUNCI

2800

URENE

128° → 4000

← 308°

2800

GP 3.00°
TCH 45

5.1 NM

6.1 NM

CATEGORY

A

B

C

D

LPV DA

1517-1³/₈

394 (400-1³/₈)

LNAV/VNAV DA

1749-2¹/₄

626 (700-2¹/₄)

LNAV MDA

1660-1

537 (600-1)

1660-1¹/₂

537 (600-1¹/₂)

CIRCLING

1700-1
577 (600-1)

1720-1
597 (600-1)

1720-1¹/₂
597 (600-1¹/₂)

2000-2³/₄
877 (900-2³/₄)

LITTLE FALLS, MINNESOTA
Orig-B 08NOV18

LITTLE FALLS/MORRISON COUNTY-LINDBERGH FIELD (LXL)
45°57'N-94°21'W
RNAV (GPS) RWY 31

NC-1, 18 JUN 2020 to 16 JUL 2020

NC-1, 18 JUN 2020 to 16 JUL 2020