

Flight Procedures Cover Page	Task Action: FLIGHT CHECK	Task Type: IAP	Estimated Chart Date: 09/05/2024	APWS Task ID: B0284DC8099E4EE2B4F09752A842B57D	APWS Project ID: D0D5513F61BB49AFBE999DC1D3B8C3E1
Procedure: ILS OR LOC RWY 10 AMDT 22		Enroute: NO	Specialist: Tucker, Andre		Agreement Number:
Airport ID: KBWI			Airport City: BALTIMORE		State: MD
Facility ID: BAL	Facility Type: ILS	Flight Inspection Remark Type: New FC Slot			
<div>Procedure Comments: PROCEDURE REDESIGN FOR NOISE ABATEMENT. CONTACT ERIC SUSKI: (405) 954-7331. <div>Digitally signed by ERIC N SUSKI Apr 29, 2024</div></div>					


QUALITY
41
CHECKED

QUALITY
34
CHECKED

FIPC BASIC FORM									
PROCEDURE: ILS OR LOC RWY 10 AMDT 22			AIRPORT NAME: BALTIMORE/WASHINGTON INTL		AIRPORT ID: KBWI		SPECIAL CONTROL NO: YP-05-006-24		
FAC ID: BAL		CITY: BALTIMORE			ST: MD		ORIG CHART DATE: 09/05/2024		
DFL TYPE: PROC/A	THIRD PARTY: <input type="checkbox"/> YES	EST. TIME ON SITE: 0.4	REIMB. NUMBER:		PTS TASK ID: B0284DC8099E4EE2B4F09752A842B57D				
PREFLIGHT NOTES									
REVIEWER:					DATE:				
COMMENTS:					CHECK ONE: <input type="checkbox"/> FLT CK REQ <input type="checkbox"/> NFCR <input type="checkbox"/> REJECT				
								YES	NO
					CPV COMPLETE?			X	
PROCEDURE RESULTS									
INSPECTION DATE: 06/11/2024		CREW #: VN504	N #: N80	INSTRUMENT PROCEDURE STATUS: <input checked="" type="checkbox"/> SAT <input type="checkbox"/> SAT W/CHANGES <input type="checkbox"/> UNSAT		ARINC CODING: <input checked="" type="checkbox"/> SAT <input type="checkbox"/> SAT/GOLD <input type="checkbox"/> UNSAT			
FLIGHT INSPECTOR SIGNATURE: michael g campbell @ 06/12/2024 14:24			PRINTED NAME: CAMPBELL, MICHAEL GRANT				NOTAM INITIATED? <input type="checkbox"/> YES <input checked="" type="checkbox"/> NO		
FLIGHT INSPECTOR REMARKS:									
IN-FLIGHT OBSTACLE REPORT									
OBSTRUCTION ID #:	COORDINATES OR LOCATION:		GNSS ALTITUDE (MSL):		BAROMETRIC ALTITUDE (MSL):		HEIGHT ABOVE GROUND LEVEL:		

LOC I-BAL <u>109.7</u>	APP CRS 105°	Rwy Idg 9953 TDZE 143 Apt Elev 143
----------------------------------	------------------------	---

BALTIMORE/ ILS RWY 10 (SA CAT I)
WASHINGTON INTL THURGOOD MARSHALL (BWI)

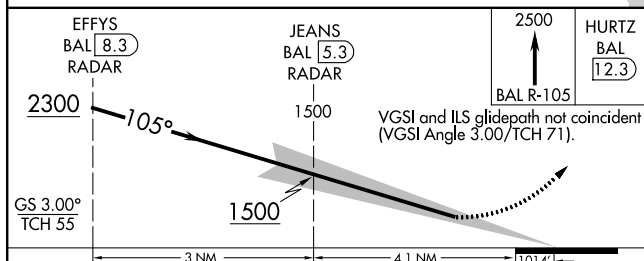
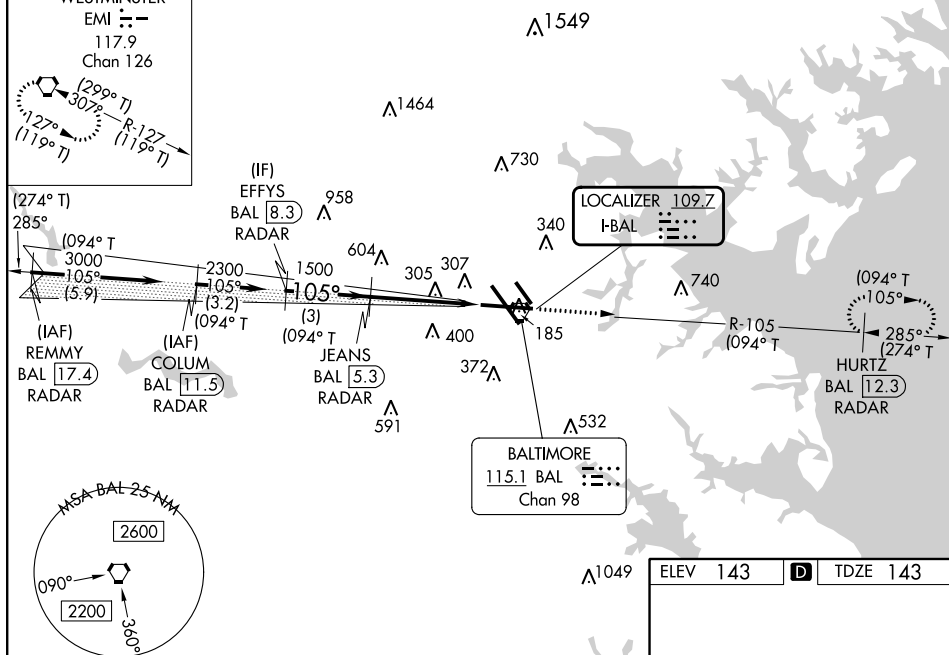
RADAR required for procedure entry. DME or RADAR required.	ALSF-2 	MISSED APPROACH: Climb to 2500 on BAL VORTAC R-105 to HURTZ/BAL 12.3 DME/RADAR and hold.
---	---	---

D-ATIS	POTOMAC APP CON				BALTIMORE TOWER	GND CON	CLNC DEL
115.1 127.8	119.0 282.275	(020°-130°)	119.7 290.475	(131°-180°)	119.4 257.8	121.9	118.05
	124.55 317.425	(101°-100°)	128.7 307.9	(181°-019°)			

ALTERNATE MISSED
APCH FIX

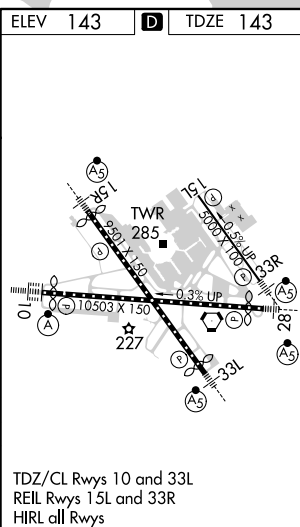
WESTMINSTER
EMI \div -
117.9
Chan 126

PROTOTYPE-NOT FOR NAVIGATION



CATEGORY	A	B	C	D
S-ILS 10	RA 188/14 150 DA 293			

SA CATEGORY I ILS - SPECIAL AIRCREW
& AIRCRAFT CERTIFICATION REQUIRED



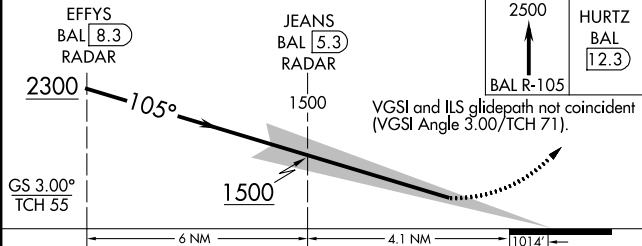
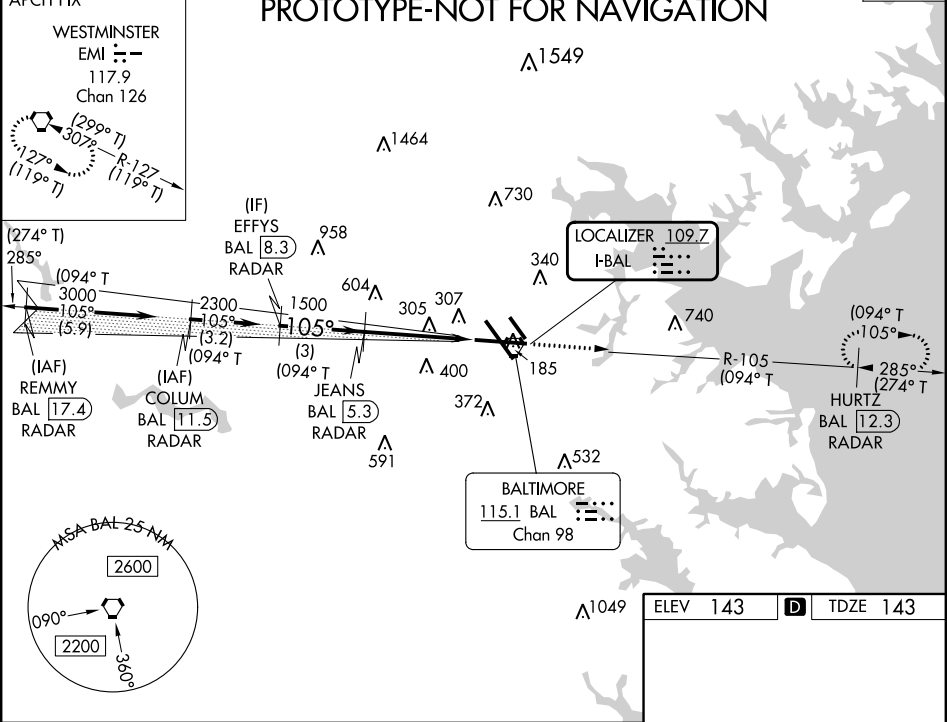
LOC I-BAL	APP CRS	Rwy Idg	9953
109.7	105°	TDZE	143
		Apt Elev	143

BALTIMORE/ ILS RWY 10 (CAT II & III)
WASHINGTON INTL THURGOOD MARSHALL (BWI)

RADAR required for procedure entry. DME or RADAR required.	ALSF-2	MISSED APPROACH: Climb to 2500 on BAL VORTAC R-105 to HURTZ/BAL 12.3 DME/RADAR and hold.

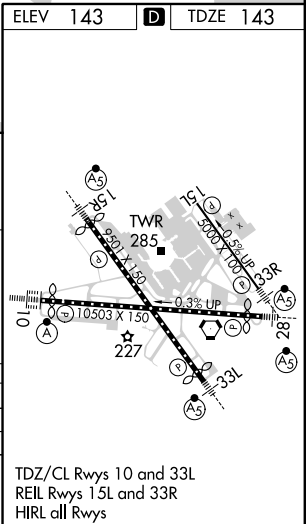
D-ATIS	POTOMAC APP CON	BALTIMORE TOWER	GND CON	CLNC DEL
115.1 127.8	119.0 282.275 (020°-100°) 119.7 290.475 (131°-180°) 124.55 317.425 (101°-130°) 128.7 307.9 (181°-019°)	119.4 257.8	121.9	118.05

ALTERNATE MISSED APCH FIX	CPDLC
------------------------------	-------



CATEGORY	A	B	C	D
S-ILS 10		CAT II	RA 105/12 100 DA 243	
S-ILS 10		CAT III	RVR 06	

CATEGORY II & III ILS - SPECIAL AIRCREW
& AIRCRAFT CERTIFICATION REQUIRED



LOC I-BAL <u>109.7</u>	APP CRS 105°	Rwy Idg 9953 TDZE 143 Apt Elev 143
----------------------------------	------------------------	---

BALTIMORE/ WASHINGTON INTL THURGOOD MARSHALL (BWI) ILS or LOC RWY 10

RADAR required for procedure entry.
DME required.

ALSF-2

MISSED APPROACH: Climb to 2500 on BAL VORTAC R-105 to HURTZ/BAL 12.1 DME/RADAR and hold.

D-ATIS	POTOMAC APP CON				BALTIMORE TOWER	GND CON	CLNC DEL
115.1 127.8	119.0 282.275	(020°-100°)	119.7 290.475	(131°-180°)			
	124.55 317.425	(101°-130°)	128.7 307.9	(181°-019°)	119.4 257.8	121.9	118.05

ALTERNATE MISSED
APCH FIX

WESTMINSTER
EMI \div -
117.9
Chan 126

A1549

A1464

Λ⁷³⁰

LOCALIZER 109.7
I-BAL

HURTZ
BAL 12.1
RADAR

BALTIMORE
15.1 BAL
Chan 98

A1049

ELEV 143	D	TDZE 143
----------	----------	----------

VGSI and ILS glidepath not coincident (VGSI Angle 3.00/TCH 71).

2500	HURTZ BAL 12.1
------	----------------------

CATEGORY	A	B	C	D
S-ILS 10	343/18 200 (200-½)			
S-LOC 10	580/24 437 (500-½)	580/40 437 (500-¾)		
CIRCLING	640-1 497 (500-1)	660-1 517 (600-1)	700-1½ 557 (600-1½)	860-2¼ 717 (800-2¼)

TDZ/CL Rwy 10 and 33L
REIL Rwy 15L and 33R
HIRL all Rwy

FAF to MAP 4.1 NM

Knots	60	90	120	150	180
Min:Sec	4:06	2:44	2:03	1:38	1:22

BALTIMORE, MARYLAND
Amdt 21D 08SEP22

BALTIMORE/WASHINGTON INTL THURGOOD MARSHALL (BWI)
39°11'N-76°40'W ILS or LOC RWY 10

ILS or LOC RWY 10

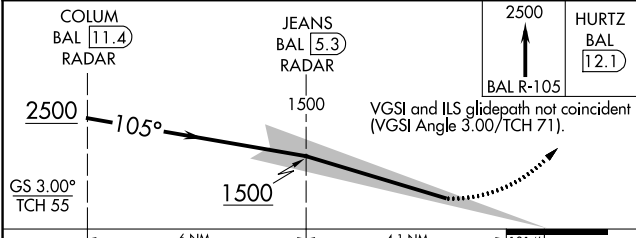
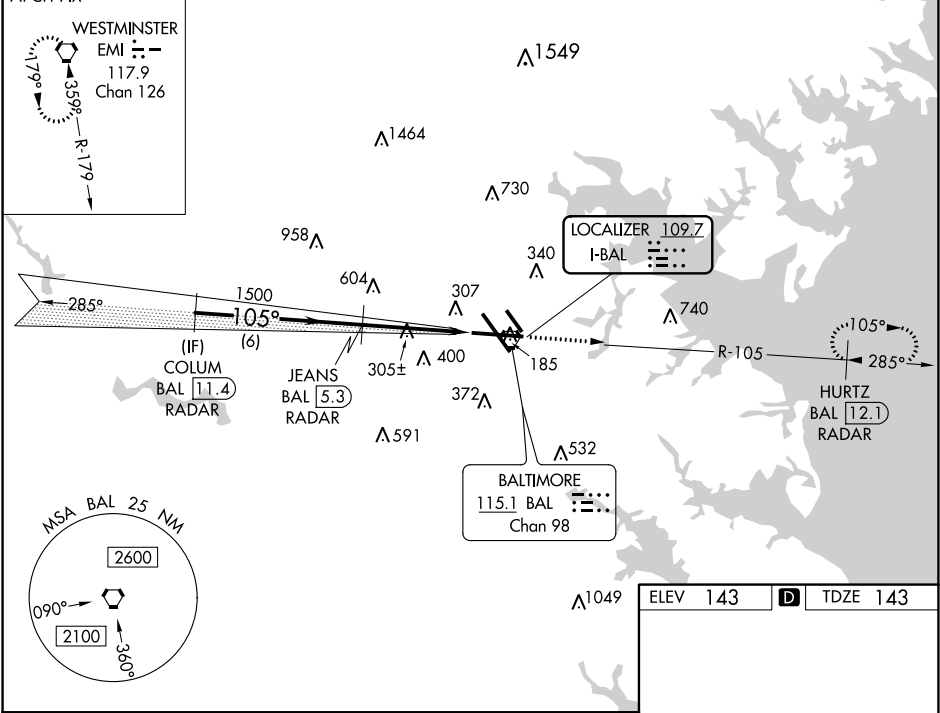
LOC I-BAL 109.7	APP CRS 105°	Rwy Idg 9953 TDZE 143 Apt Elev 143
---------------------------	------------------------	---

BALTIMORE/ ILS RWY 10 (CAT II & III)
WASHINGTON INTL THURGOOD MARSHALL (BWI)

RADAR required for procedure entry. DME required.	ALSIF-2 	MISSED APPROACH: Climb to 2500 on BAL VORTAC R-105 to HURTZ/BAL 12.1 DME/RADAR and hold.
--	-------------	---

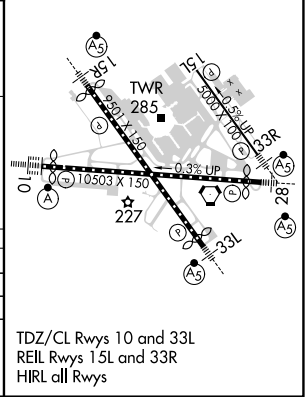
D-ATIS 115.1 127.8	POTOMAC APP CON 119.0 282.275 (020°-100°) 119.7 290.475 (131°-180°) 124.55 317.425 (101°-130°) 128.7 307.9 (181°-019°)	BALTIMORE TOWER 119.4 257.8	GND CON 121.9	CLNC DEL 118.05
------------------------------	--	---------------------------------------	-------------------------	---------------------------

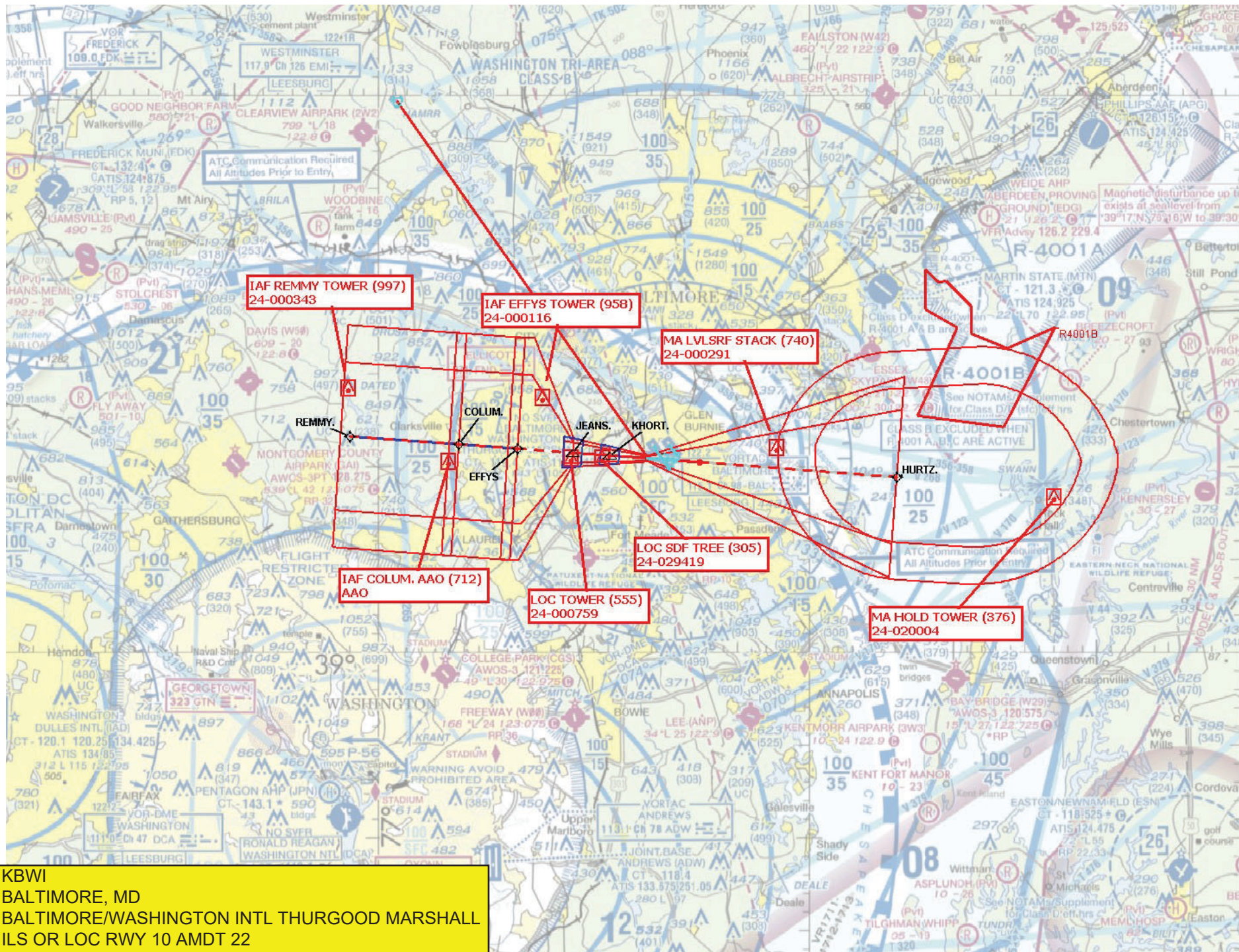
ALTERNATE MISSED APCH FIX	CPDLC
------------------------------	-------

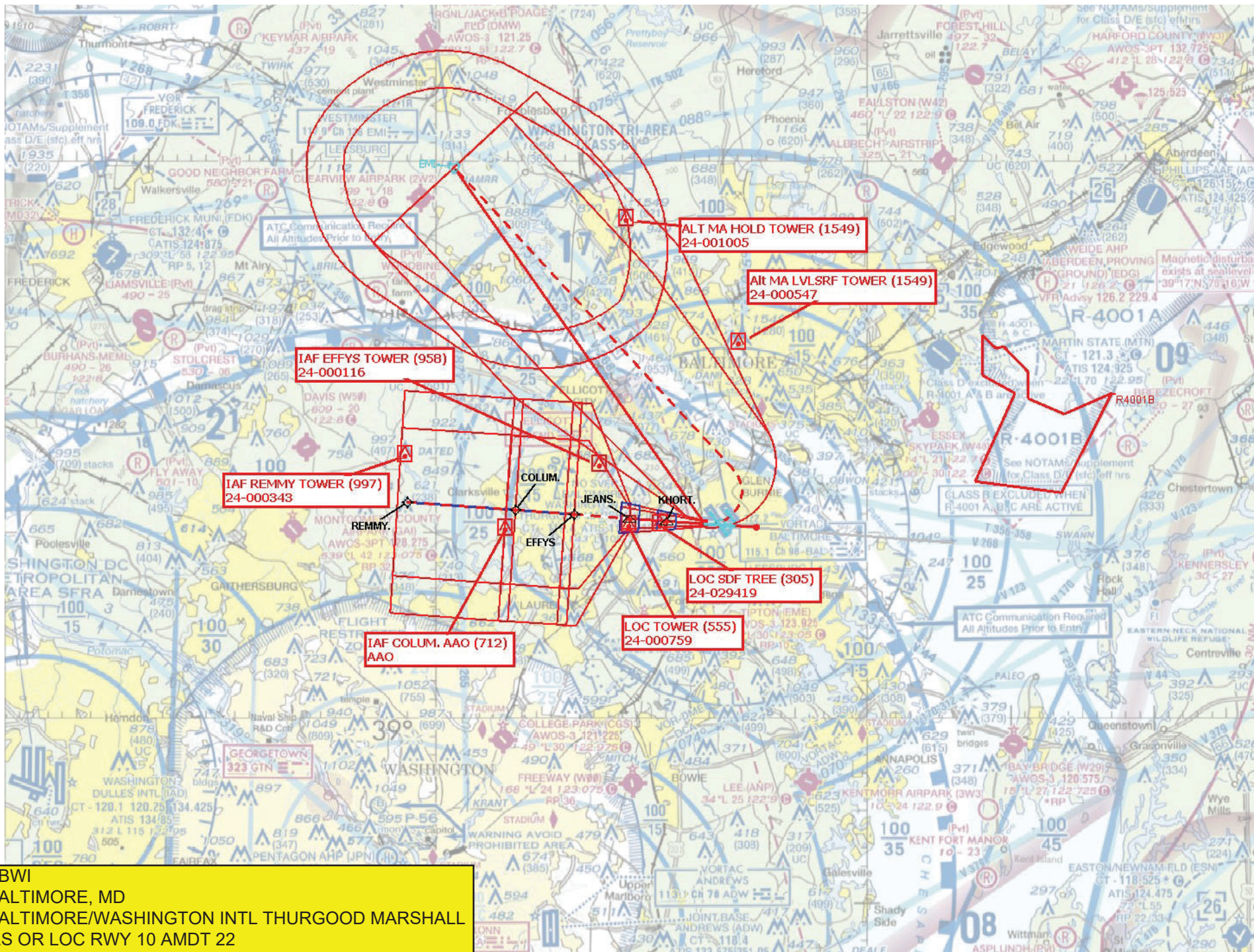


CATEGORY	A	B	C	D
S-ILS 10	CAT II RA 102/12 100 DA 243			
S-ILS 10	CAT III RVR 06			

CATEGORY II & III ILS - SPECIAL AIRCREW
& AIRCRAFT CERTIFICATION REQUIRED







KBWI
BALTIMORE, MD
BALTIMORE/WASHINGTON INTL THURGOOD MARSHALL
ILS OR LOC RWY 10 AMDT 22
ALT MA 1:500K

