

Flight Procedures Cover Page	Task Action: Abbreviated Amendment	Task Type: IAP	Estimated Chart Date: 06/12/2025	APWS Task ID: AFE4BD0E95E8425B9C522BC3CF259C0D	APWS Project ID: 42687875AC8041F8A1DE5EE790CFC674
Procedure: RNAV (GPS) RWY 18 AMDT 0C		Enroute: NO	Specialist: Wilkinson, Christopher		Agreement Number:
Airport ID: D95			Airport City: LAPEER		State: MI
Facility ID:	Facility Type:	Flight Inspection Remark Type:			
<div>Procedure Comments: UTILIZED ACTIVE DATA FOR KD95 AND RWYS. CONTACT CASIMIR TABAKA, AJV-A430, 405-202-7857.</div> <div><div>QUALITY 10 CHECKED</div><div>QUALITY 38 CHECKED</div></div>					

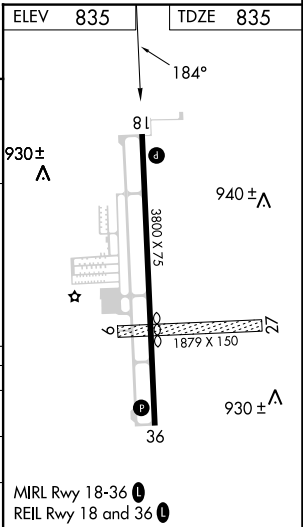
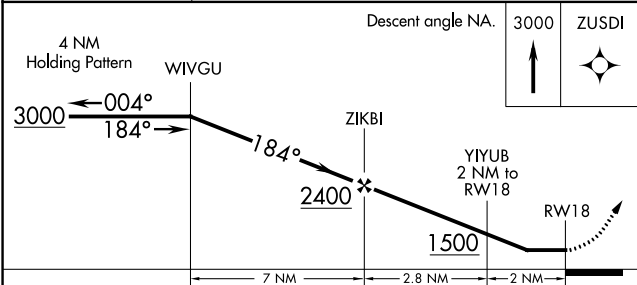
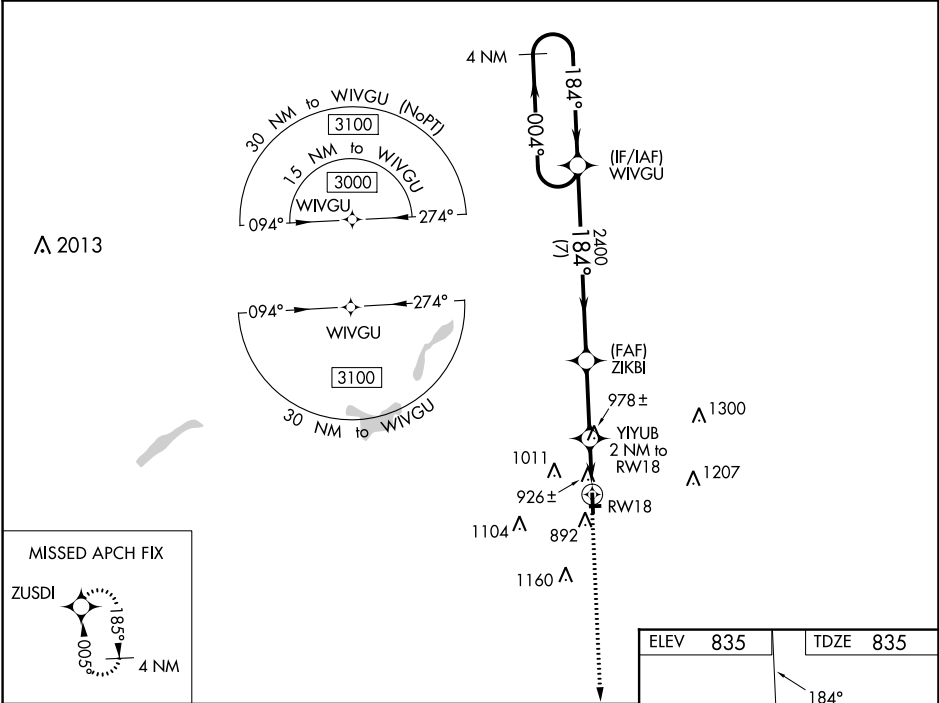
WAAS CH 56234 W18A	APP CRS 184°	Rwy Idg TDZE 835 Apt Elev 835
--	------------------------	---

OLD

RNAV (GPS) RWY 18
DUPONT/LAPEER (D95)

<p>⚠ DME/DME RNP-0.3 NA. Helicopter visibility reduction below ¾ SM NA. When local altimeter setting not received, use Flint altimeter setting and increase all MDAs 60 feet and increase LP Cat C visibility ½ mile, LNAV Cat C and Circling Cat C visibility ¼ mile. Circling NA to Rwy 9 and 27.</p>	<p>MISSED APPROACH: Climb to 3000 direct ZUSDI and hold.</p>
--	---

AWOS-3P 134.050	GREAT LAKES APP CON ★ 118.8 257.9	UNICOM 123.0 (CTAF) 0
---------------------------	---	---------------------------------



CATEGORY	A	B	C	D
LP MDA	1180-1	345 (400-1)		NA
LNAV MDA	1240-1	405 (500-1)	1240-1½ 405 (500-1½)	NA
CIRCLING	1300-1 465 (500-1)	1380-1 545 (600-1)	1460-1¾ 625 (700-1¾)	NA