


Flight Procedure Tracking Form		Action: AMENDMENT	Task Type: IAP	Date Open: 03/29/2019	Task #: 2019032928928501001	Request #: 20190329289285
Procedure: RNAV (GPS) RWY 33 AMDT 1A			Airport ID: KPGD	Airport: PUNTA GORDA		Reimbursable #: NO
City: PUNTA GORDA	ST: FL	GPS #:	Estimated Chart Date: 01/30/2020		FICO #:	
Fac ID: N/A		Fac. Type:		Specialist: MIKE MELSEN		
Procedure Review						
	Rec'd	Rel'd	Full Name	Comments		
Lead:	03/29/2019	11/15/2019	WARDELL HENNING	 <i>Digitally signed by</i> <i>Digitally signed by</i> SEAN BARBEE WARDELL HENNING Nov 25, 2019 Dec 02, 2019		
QA:	11/15/2019					
Liaison:						
Procedure Comments: ENROUTE-NON Remark Type: INFORMATION P-NOTAM TO REPLACE T-NOTAM. PROCESSED IAW AIRCRAFT OPERATIONS GROUP (AJW-33) MEMO, OCT 3, 2018, SUBJECT: FLIGHT INSPECTION REVIEW NOT REQUIRED. NEW LNAV/VNAV CONTROLLING OBSTACLE: 127 MSL ANTENNA (12-126523) 265401.99N/0815821.16W (1A) NEW LNAV STEP CONTROLLING OBSTACLE: 137 MSL BUILDING (12-126557) 265309.15N/0815835.41W (1A) NEW CIRCLING CAT A OBSTACLE: 159 MSL CONTROL TOWER 12-126883 AT 265509.93N/0815959.75W, AC 1A. CIRCLING CAT D CONTROLLING OBSTACLE (12-002478) ELEVATION UPDATED FROM 380 MSL TO 381 MSL. CONTACT: ANDREW HENNING; 405.954.9954. 9/0530						

OLD

PUNTA GORDA, FLORIDA

AL-6178 (FAA)

19059

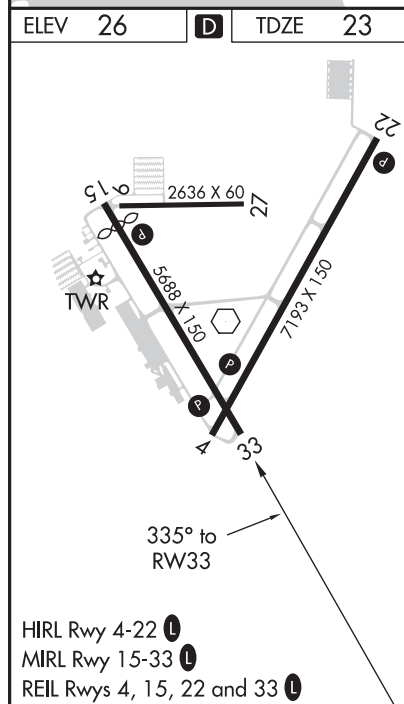
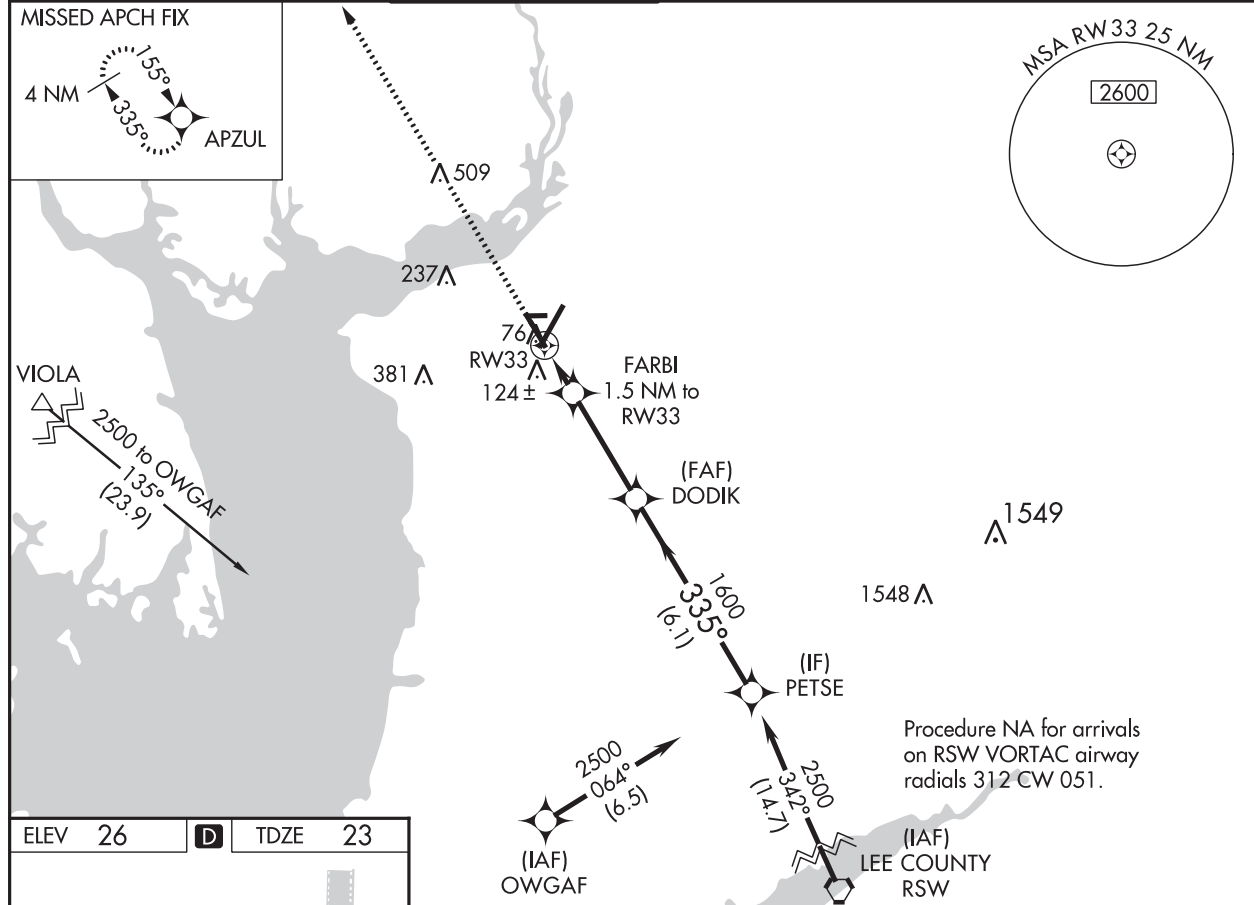
WAAS CH 93507 W33A	APP CRS 335°	Rwy Idg TDZE Apt Elev	5127 23 26
--	------------------------	-----------------------------	---------------------------------------

RNAV (GPS) RWY 33 PUNTA GORDA (PGD)

⚠ Baro-VNAV and VDP NA when using Page Field altimeter setting. For uncompensated Baro-VNAV systems, LNAV/VNAV NA below 0°C (32°F) or above 54°C (130°F). DME/DME RNP-0.3 NA.
⚠ When local altimeter setting not received, use Page Field altimeter setting and increase all DA 50 feet and all MDA 60 feet; increase LPV and LNAV/VNAV all Cats visibility ¼ mile, LNAV Cats C and D visibility ½ mile, and Circling Cat C visibility ¼ mile. Helicopter visibility reduction below ¾ SM NA.

MISSED APPROACH:
Climb to 2000 direct APZUL and hold.

ASOS 135.675	FORT MYERS APP CON ★ 127.05 306.2	PUNTA GORDA TOWER ★ 121.0 (CTAF) 0	GND CON 119.55	CLNC DEL 119.55	FORT MYERS CLNC DEL 127.05 (when tower closed)	UNICOM 122.975
------------------------	---	--	--------------------------	---------------------------	---	--------------------------



ELEV 26		TDZE 23				
2000		APZUL				
* LNAV only						
* 1 NM to RW33						
* 1 NM to RW33						
* 540						
1 NM		0.5	3.3 NM	6.1 NM		
CATEGORY		A	B	C	D	
LPV DA		273-¾	250 (300-¾)			
LNAV/VNAV DA		305-⅞	282 (300-⅞)			
LNAV MDA		380-1	357 (400-1)			
CIRCLING		440-1 414 (500-1)	580-1 554 (600-1)	600-1½ 574 (600-1½)	740-2¼ 714 (800-2¼)	

PUNTA GORDA, FLORIDA
Amdt 1 15OCT15

26°55'N-81°59'W

PUNTA GORDA (PGD) **RNAV (GPS) RWY 33**

SE-3, 15 AUG 2019 to 12 SEP 2019

SE-3, 15 AUG 2019 to 12 SEP 2019

