


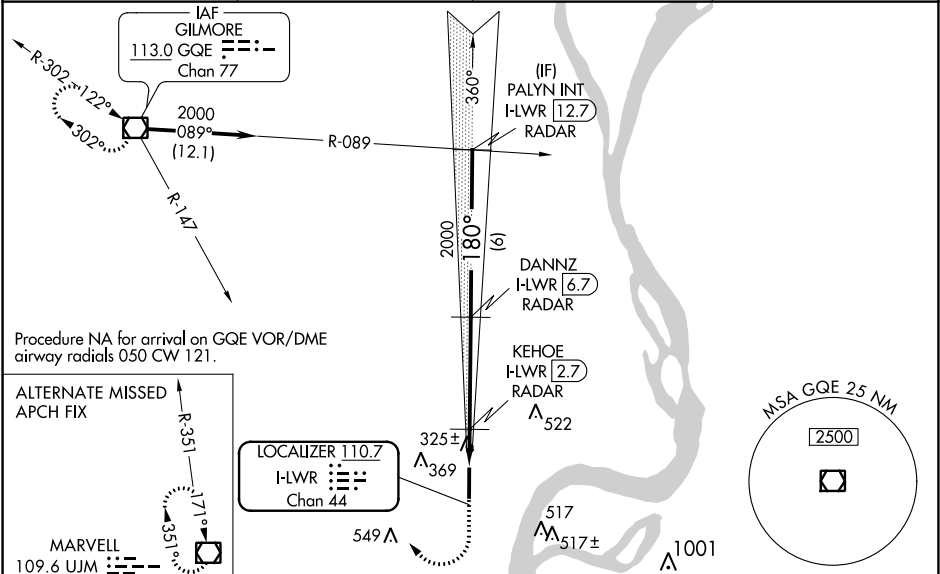
Flight Procedures Cover Page	Task Action: P-NOTAM	Task Type: IAP	Estimated Chart Date: 12/30/2021	APWS Task ID: AE59198349654EFEB81FE4140CFD88FE	APWS Project ID: ECBC25759F9A4F4D9132A947C6603183
Procedure: ILS OR LOC RWY 17 AMDT 5C		Enroute: NO	Specialist: Cannon, Brett		Agreement Number:
Airport ID: KAWM			Airport City: WEST MEMPHIS		State: AR
Facility ID:	Facility Type:	Flight Inspection Remark Type:			
<div> <div> Procedure Comments: P-NOTAM This Cancels FDC 1/9568 Order 8260.3, chapter 2, New Circling Criteria Applied Contact Dave Teffeteller at 202-267-5177 </div> <div>  </div> </div>					

LOC/DME I-LWR 110.7 Chan 44	APP CRS 180°	Rwy Idg TDZE 213 Apt Elev 213
---	------------------------	---

ILS or LOC RWY 17
WEST MEMPHIS MUNI (A WM)

DME or RADAR required.	MALSR	MISSED APPROACH: Climb to 1000 then climbing right turn to 2000 on GQE VOR/DME R-147 to GQE VOR/DME and hold.
NA For inop ALS, increase S-LOC 17 Cat C/D visibility to 1½ SM and KEHOE FIX MINIMUMS S-LOC 17 Cats C/D visibility to 1 SM.		

ASOS 118.175	MEMPHIS APP CON 119.1 291.6	CLNC DEL 121.7	UNICOM 123.05 (CTAF) 0
------------------------	---------------------------------------	--------------------------	---



Chan 33			669A Δ 669		ELEV 213		TDZE 213	
1000 ↑	2000 GQE R-147	GQE 	DANNZ I-LWR <u>6.7</u> RADAR	PALYN INT I-LWR <u>12.7</u> RADAR				

SC-1, 20 MAY 2021 to 17 JUN 2021

SC-1, 20 MAY 2021 to 17 JUN 2021

