

Flight Procedures Cover Page	Task Action: Amendment	Task Type: IAP	Estimated Chart Date: 08/10/2023	APWS Task ID: AD8C99992A82402887B1D491CCB129FF	APWS Project ID: 8C6E5192C60949D28591ED945A6C0FFE
Procedure: ILS OR LOC RWY 11 CAT II/III AMDT 25B		Enroute: NO	Specialist: Boone-walt, Rose		Agreement Number:
Airport ID: KORH			Airport City: WORCESTER		State: MA
Facility ID: EKW	Facility Type: ILS	Flight Inspection Remark Type:			
<div>Procedure Comments:</div> <div>CONTACT: JASON KRETSCHMER AJV-A421 LEAD: 405.954.4019</div> <div><div>Digitally signed by <b>JASON KRETSCHMER</b> May 16, 2023</div><div><div>QUALITY 10 CHECKED</div><div>QUALITY 38 CHECKED</div></div></div>					

[illegible]

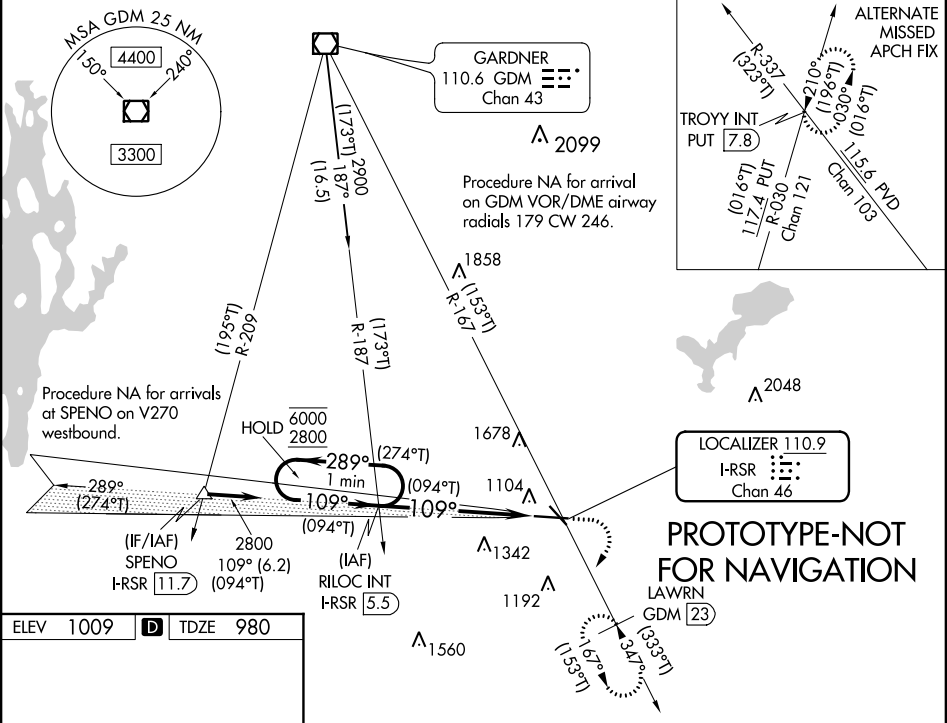
LOC/DME I-RSR	APP CRS	Rwy Idg	7001
110.9	109°	TDZE	980
Chan 46		Apt Elev	1009

ILS or LOC RWY 11  
WORCESTER RGNL (ORH)

For inop ALS, increase S-LOC 11 Cats C and D visibility to 1½ SM.  
When control tower closed: inop table does not apply to S-ILS 11  
all Cats. When control tower closed: for inop ALS, increase S-LOC  
11 Cat C and D visibility to 1½ SM.

ALS-F-2  
MISSED APPROACH: Climb to 1800 then climbing  
right turn to 3100 on heading 230° and on GDM  
VOR/DME R-167 to LAWRN/GDM 23 DME and  
hold, continue climb-in-hold to 3100.

ATIS	BRADLEY APP CON	WORCESTER TOWER★	GND CON	CLNC DEL	CLNC DEL	UNICOM
126.55	119.0 327.1	120.5 (CTAF) 263.0	123.85	128.65	119.0 (When twr closed)	122.95



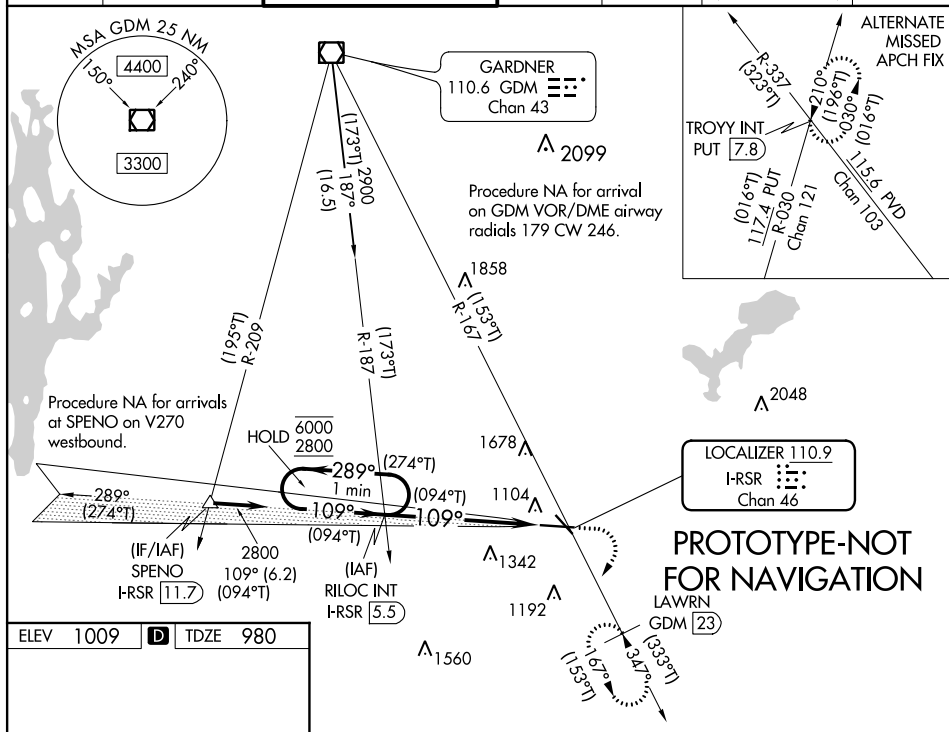
ELEV 1009	TDZE 980
TDZ/CL Rwy 11	
REIL Rwys 15, 29 and 33	
HIRL Rwy 11-29	
MIRL Rwy 15-33	
FAF to MAP 5.5 NM	
Knots	60 90 120 150 180
Min:Sec	5:30 3:40 2:45 2:12 1:50

One Minute Holding Pattern	RILOC INT I-RSR 5.5	1800	3100	GDM R-167	LAWRN GDM 23
GS 3.00° TCH 55					
4 NM 1.5 NM					
CATEGORY	A	B	C	D	
S-ILS 11	1180/18 200 (200-½)				
S-LOC 11	1500/24	520 (500-½)	1500/55	520 (500-1)	
CIRCLING	1560-1 551 (600-1)	1740-1 731 (800-1)	2000-3	991 (1000-3)	

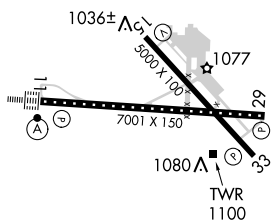
ILS RWY 11 (CAT II & III)  
WORCESTER RGNL (ORH)

**MISSED APPROACH:** Climb to 1800 then climbing right turn to 3100 on heading 230° and on GDM VOR/DME R-167 to LAWRN/GDM 23 DME and hold, continue climb-in-hold to 3100.

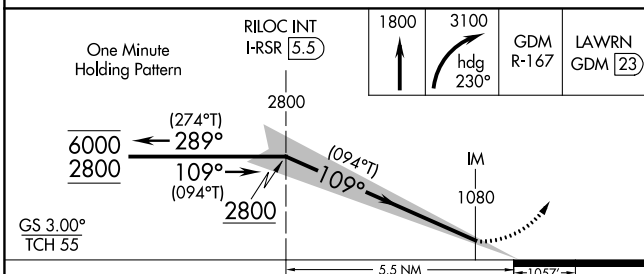
ATIS	BRADLEY APP CON	WORCESTER TOWER★	GND CON	CLNC DEL	CLNC DEL	UNICOM
<b>126.55</b>	<b>119.0 327.1</b>	<b>120.5 (CTAF) 0 263.0</b>	<b>123.85</b>	<b>128.65</b>	<b>119.0</b> (When twr closed)	<b>122.95</b>



ELEV	1009	<b>D</b>	TDZE	980
------	------	----------	------	-----



TDZ/CL Rwy 11  
REIL Rwy 15, 29 and 33 **L**  
HIRL Rwy 11-29 **L**  
MIRL Rwy 15-33 **L**



CATEGORY	A	B	C	D
S-LS 11	CAT II RA 119/12 100 DA 1080			
S-LS 11	CAT III RVR 06			

CATEGORY II & III ILS - SPECIAL AIRCREW  
& AIRCRAFT CERTIFICATION REQUIRED

OLD

WORCESTER, MASSACHUSETTS

AL-652 (FAA)

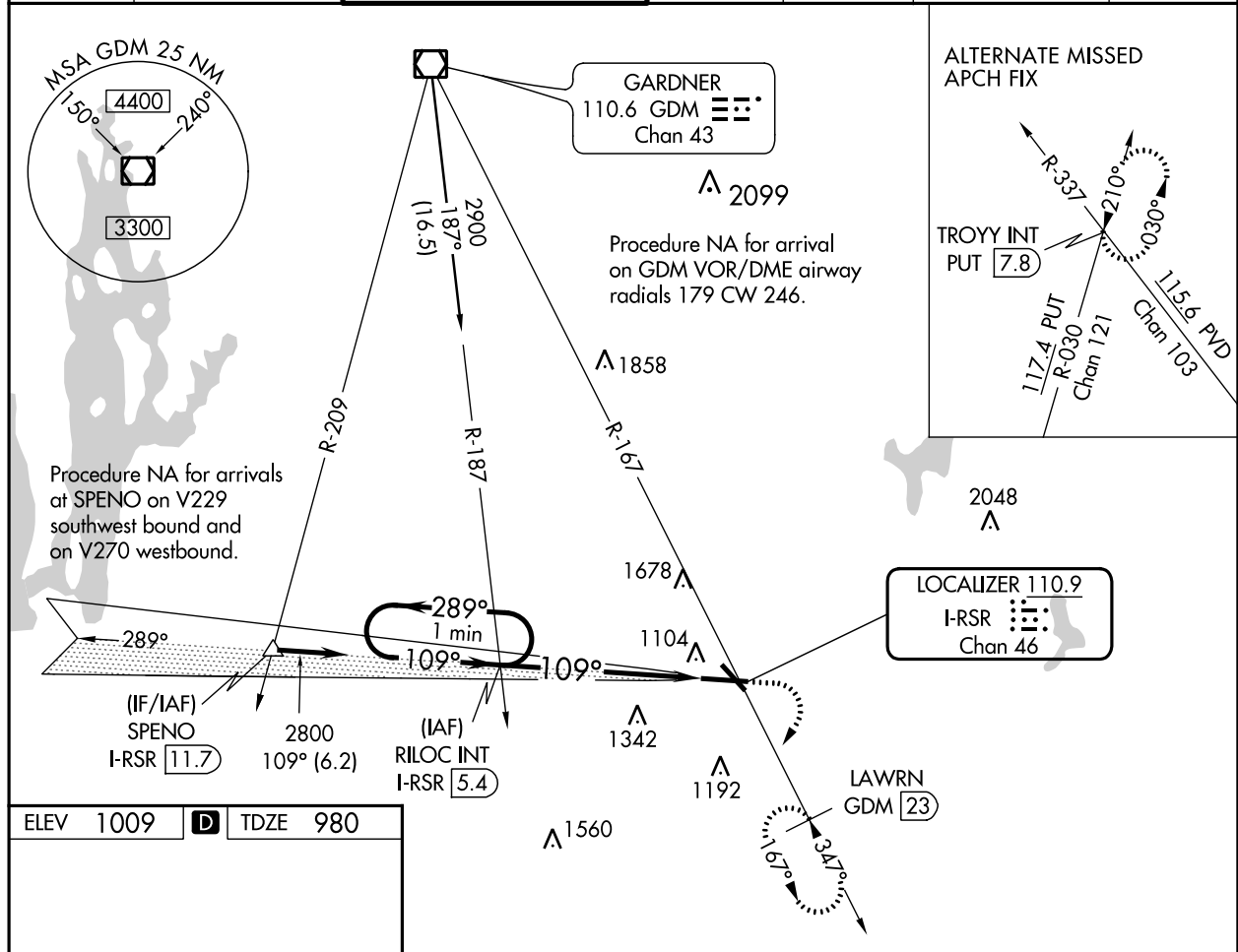
22363

LOC/DME I-RSR <b>110.9</b> Chan <b>46</b>	APP CRS <b>109°</b>	Rwy Idg TDZE Apt Elev <b>7001</b> <b>980</b> <b>1009</b>
---	------------------------	---

# ILS or LOC RWY 11 WORCESTER RGNL (ORH)

<p><b>▼</b> DME required. For inop ALS, increase S-LOC 11 Cats C and D visibility to 1<math>\frac{3}{8}</math> SM. When control tower closed: Inop table does not apply to S-ILS 11 all Cats. When control tower closed: for inop ALS, increase S-LOC 11 Cat C and D visibility to 1<math>\frac{3}{8}</math> SM.</p>	<p>ALSF-2 </p>	<p>MISSED APPROACH: Climb to 1800 then climbing right turn to 3000 on heading 230° and GDM VOR/DME R-167 to LAWRN/GDM 23 DME and hold, continue climb-in-hold to 3000.</p>
--	--------------------	--

ATIS <b>126.55</b>	YANKEE APP CON <b>119.0 327.1</b>	WORCESTER TOWER★ <b>120.5 (CTAF) 263.0</b>	GND CON <b>123.85</b>	CLNC DEL <b>128.65</b>	CLNC DEL <b>119.0</b> (When twr closed)	UNICOM <b>122.95</b>
-----------------------	--------------------------------------	---	--------------------------	---------------------------	---	-------------------------



ELEV 1009	<b>D</b>	TDZE 980
<p>1036± 1077 1080 TWR 1100</p> <p>109°</p> <p>TDZ/CL Rwy 11 REIL Rwy 15, 29 and 33 HIRL Rwy 11-29 MIRL Rwy 15-33</p> <p>FAF to MAP 5.5 NM</p> <p>Knots 60 90 120 150 180 Min:Sec 5:30 3:40 2:45 2:12 1:50</p>		

<p>One Minute Holding Pattern</p> <p>RILOC INT I-RSR 5.4</p> <p>2800 109° 2800</p> <p>GS 3.00° TCH 55</p> <p>4 NM 1.5 NM</p>		1800	3000	GDM R-167	LAWRN GDM 23
		* LOC only.			
CATEGORY	A	B	C	D	
S-ILS 11	1180/18		200 (200- $\frac{1}{2}$ )		
S-LOC 11	1500/24	520 (500- $\frac{1}{2}$ )	1500/55	520 (500-1)	
<b>C</b> CIRCLING	1560-1 551 (600-1)	1720-1 711 (800-1)	2000-3	991 (1000-3)	

WORCESTER, MASSACHUSETTS  
Amdt 25A 19JUL18

42°16'N-71°53'W

WORCESTER RGNL (ORH)  
ILS or LOC RWY 11

NE-1, 29 DEC 2022 to 26 JAN 2023

NE-1, 29 DEC 2022 to 26 JAN 2023





