

Flight Procedures Cover Page	Task Action: FLIGHT CHECK	Task Type: IAP	Estimated Chart Date: 08/07/2025	APWS Task ID: AD2D81BB92EA4B3DB0A8C5C9AA53BFEF	APWS Project ID: 31D9BBF2153E423F809A63731BB74679
Procedure: RNAV (GPS) RWY 24 AMDT 2		Enroute: NO	Specialist: Kunkler, Jamie		Agreement Number:
Airport ID: PPIZ			Airport City: POINT LAY		State: AK
Facility ID:	Facility Type:	Flight Inspection Remark Type: New FC Slot			
<div>Procedure Comments:</div> <div>MAG VAR CHANGED FROM E15 TO E8, ALL HEADINGS AND BEARINGS UPDATED. CHANGED RW 05/23 TO RW 06/24. INITIAL AND INTERMEDIATE LEG LENGTHS CHANGED TO 7 NM. MODIFIED TAA SI SECTOR DEFINITION AND ALL 2000' TAA ALTITUDES RAISED FROM 2000 TO 2400.</div> <div>CONTACT CASIMIR TABAKA 405.954.7931.</div> <div><div>QUALITY 38 CHECKED</div><div>QUALITY 8 CHECKED</div></div>					

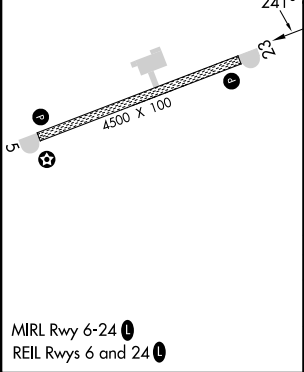
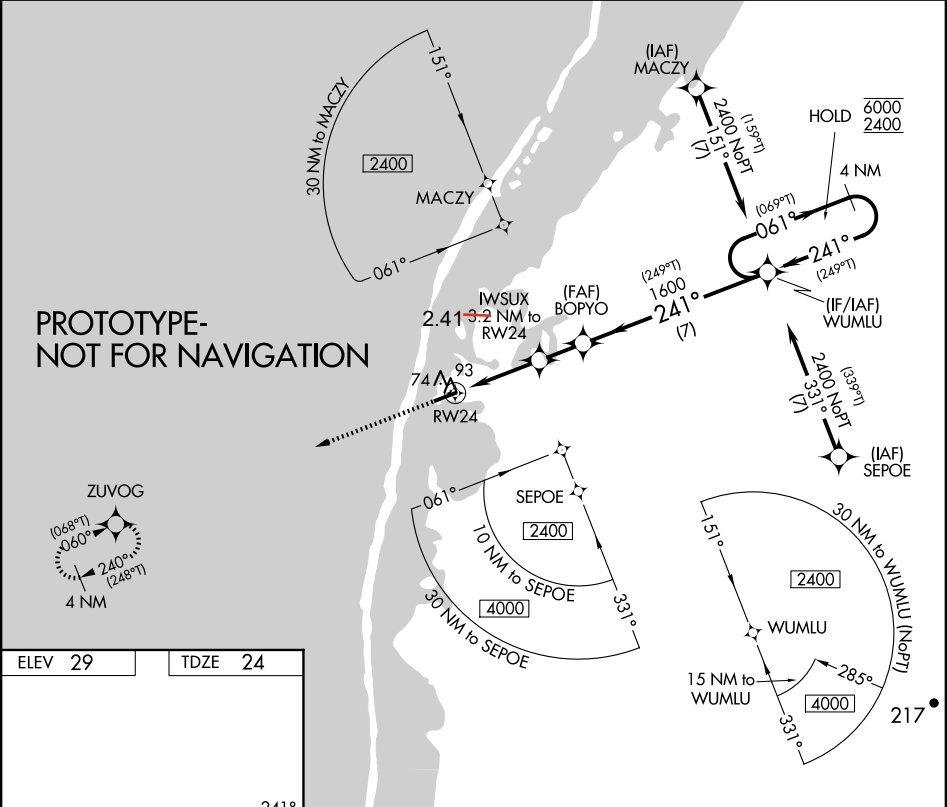
FIPC BASIC FORM						
PROCEDURE: RNAV (GPS) RWY 24 AMDT 2			AIRPORT NAME: POINT LAY LRRS		AIRPORT ID: PPIZ	SPECIAL CONTROL NO: KG-05-115-25
FAC ID: PPIZ24.02		CITY: POINT LAY			ST: AK	ORIG CHART DATE: 08/07/2025
DFL TYPE: PROC/G	THIRD PARTY: <input type="checkbox"/> YES	EST. TIME ON SITE: 0.5	REIMB. NUMBER:	PTS TASK ID: AD2D81BB92EA4B3DB0A8C5C9AA53BFEF		
PREFLIGHT NOTES						
REVIEWER: edward w mesa					DATE: 05/28/2025	
COMMENTS:					CHECK ONE:	
					<input type="checkbox"/> FLT CK REQ <input checked="" type="checkbox"/> NFCR <input type="checkbox"/> REJECT	
						YES
					CPV COMPLETE?	
					X	
PROCEDURE RESULTS						
INSPECTION DATE: 05/28/2025	CREW #: VN283	N #:	INSTRUMENT PROCEDURE STATUS: <input checked="" type="checkbox"/> SAT <input type="checkbox"/> SAT W/CHANGES <input type="checkbox"/> UNSAT		ARINC CODING: <input checked="" type="checkbox"/> SAT <input type="checkbox"/> SAT/GOLD <input type="checkbox"/> UNSAT	
FLIGHT INSPECTOR SIGNATURE: edward w mesa @ 05/28/2025 17:17			PRINTED NAME: MESA, EDWARD WILLIAM			NOTAM INITIATED? <input type="checkbox"/> YES <input checked="" type="checkbox"/> NO
FLIGHT INSPECTOR REMARKS:						
IN-FLIGHT OBSTACLE REPORT						
OBSTRUCTION ID #:	COORDINATES OR LOCATION:	GNSS ALTITUDE (MSL):	BAROMETRIC ALTITUDE (MSL):	HEIGHT ABOVE GROUND LEVEL:		

APP CRS	Rwy Ldg	4500
241°	TDZE	24
	Apt Elev	29

RNAV (GPS) RWY 24
POINT LAY LRRS (PIZ)(PPIZ)

RNP APCH - GPS.	MISSED APPROACH: Climb to 2400 direct ZUVOG and hold.
☁-33°C When local altimeter setting not received, procedure NA.	

AWOS-3P 135.65	ANCHORAGE CENTER 119.65 363.25	BARROW RADIO 122.4	CTAF 122.8 ①
-------------------	-----------------------------------	-----------------------	-----------------



<div><div>2400</div><div><div>↑</div></div></div>		<div><div>ZUVOG</div><div><div>✦</div></div></div>		<div><div>WUMLU</div><div>4 NM Holding Pattern</div></div>	
<div><div><div>2.41 NM to RW24</div><div>1.1 NM to RW24</div><div><div>1.1</div><div>2.1 NM</div></div></div></div>		<div><div><div>IWSUX</div><div>BOPYO</div></div><div><div>3.00° TCH 35</div><div>1600</div></div></div>		<div><div><div>(069°T)</div><div>061°</div><div>241°</div><div>(249°T)</div></div><div><div>6000</div><div>2400</div></div></div>	
<div><div><div>1.1</div><div>2.1 NM</div><div>1.7 NM</div><div>7 NM</div></div></div>					
CATEGORY	A	B	C	D	
LNAV MDA	400-1 376 (400-1)			NA	
CIRCLING	440-1 411 (500-1)	480-1 451 (500-1)	480-1½ 451 (500-1½)	NA	

RNAV (GPS) RWY 23
POINT LAY LRRS (PIZ)(PPIZ)

MISSED APPROACH: Climb to 2000 direct
BACIZ and hold.

2000 ↑

BACIZ

4 NM Holding Pattern

ODGAW

DUHIV

0.6 NM to HIRAN

HIRAN

0.5

0.6

3.9 NM

6 NM

234°

054°

2000

234°

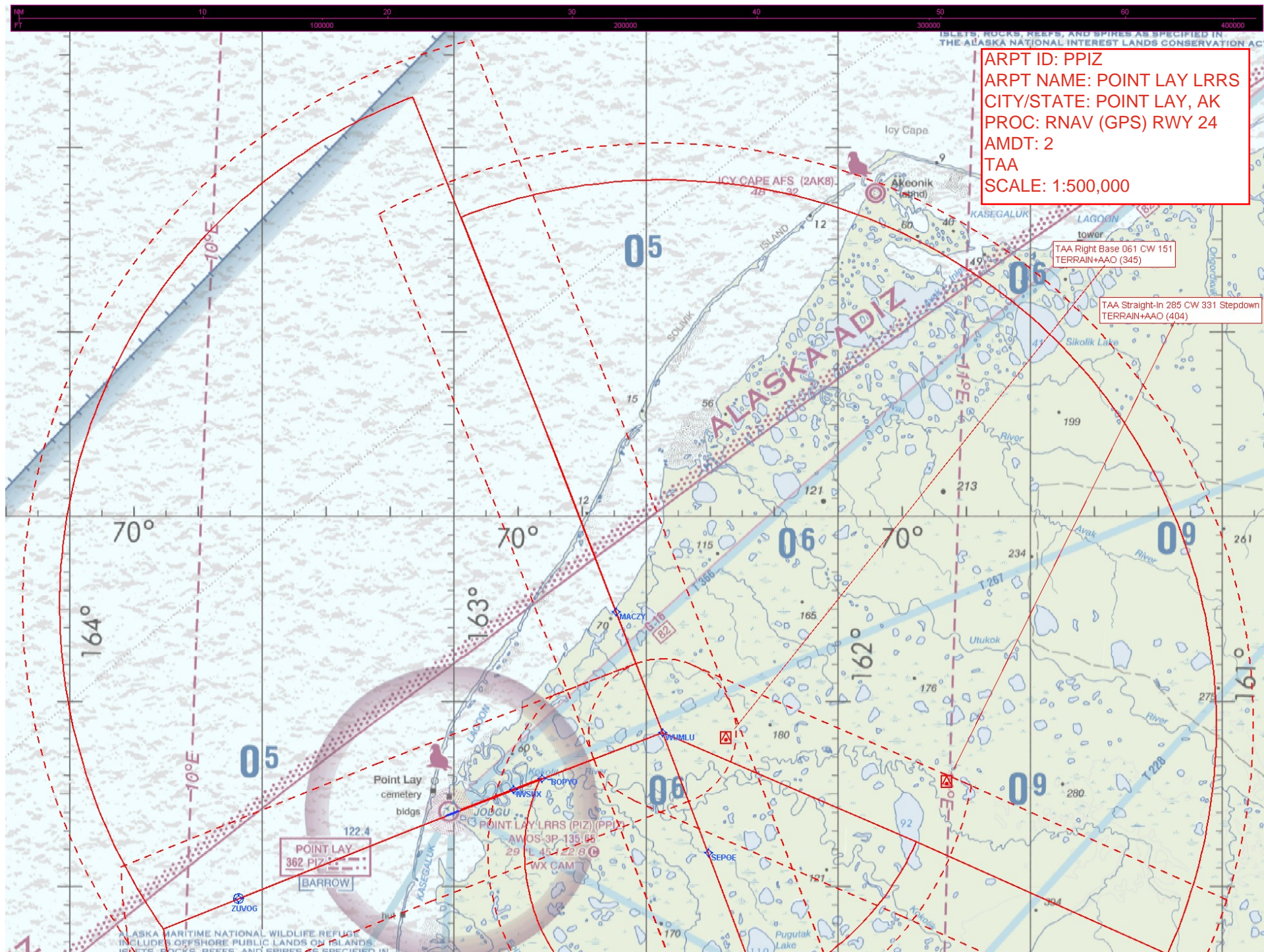
1600

2.96°

TCH 35

CATEGORY	A	B	C	D
INAV MDA	400-1	376 (400-1)		NA
CIRCLING	440-1 411 (500-1)	480-1 451 (500-1)	480-1½ 451 (500-1½)	NA

AK, 16 MAY 2024 to 11 JUL 2024



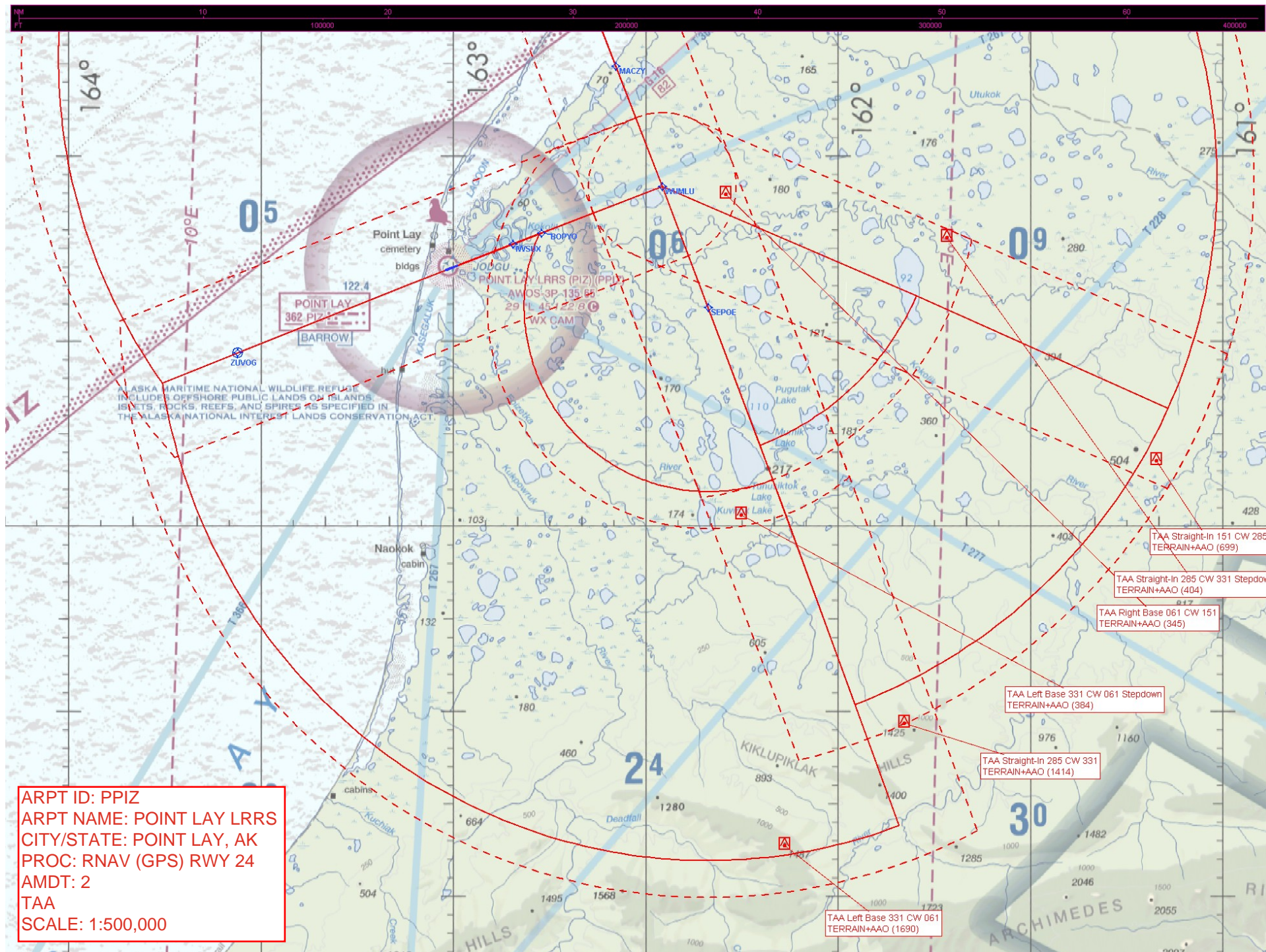
ARPT ID: PPIZ
ARPT NAME: POINT LAY LRRS
CITY/STATE: POINT LAY, AK
PROC: RNAV (GPS) RWY 24
AMDT: 2
TAA
SCALE: 1:500,000

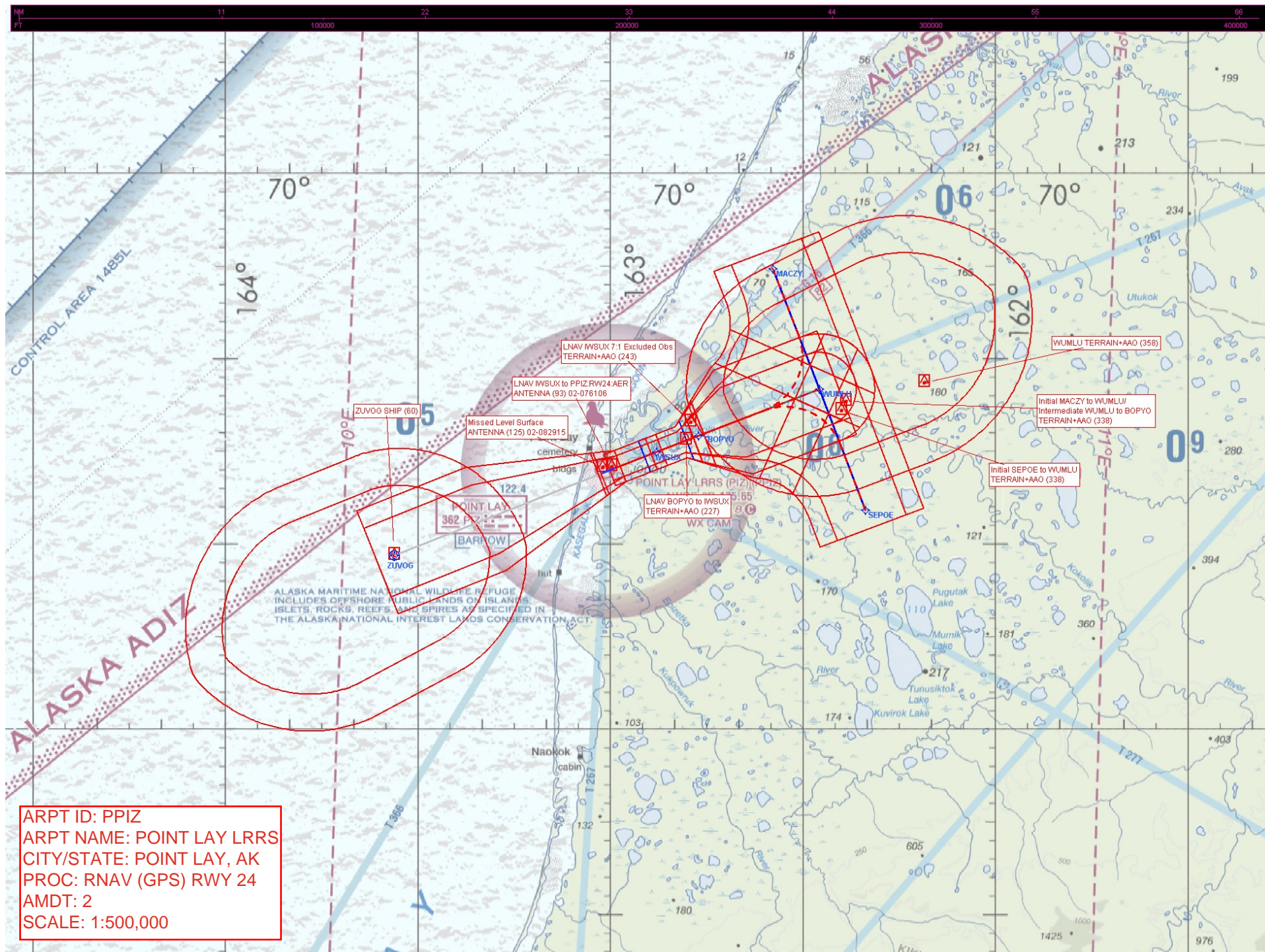
POINT LAY
362 PIZ

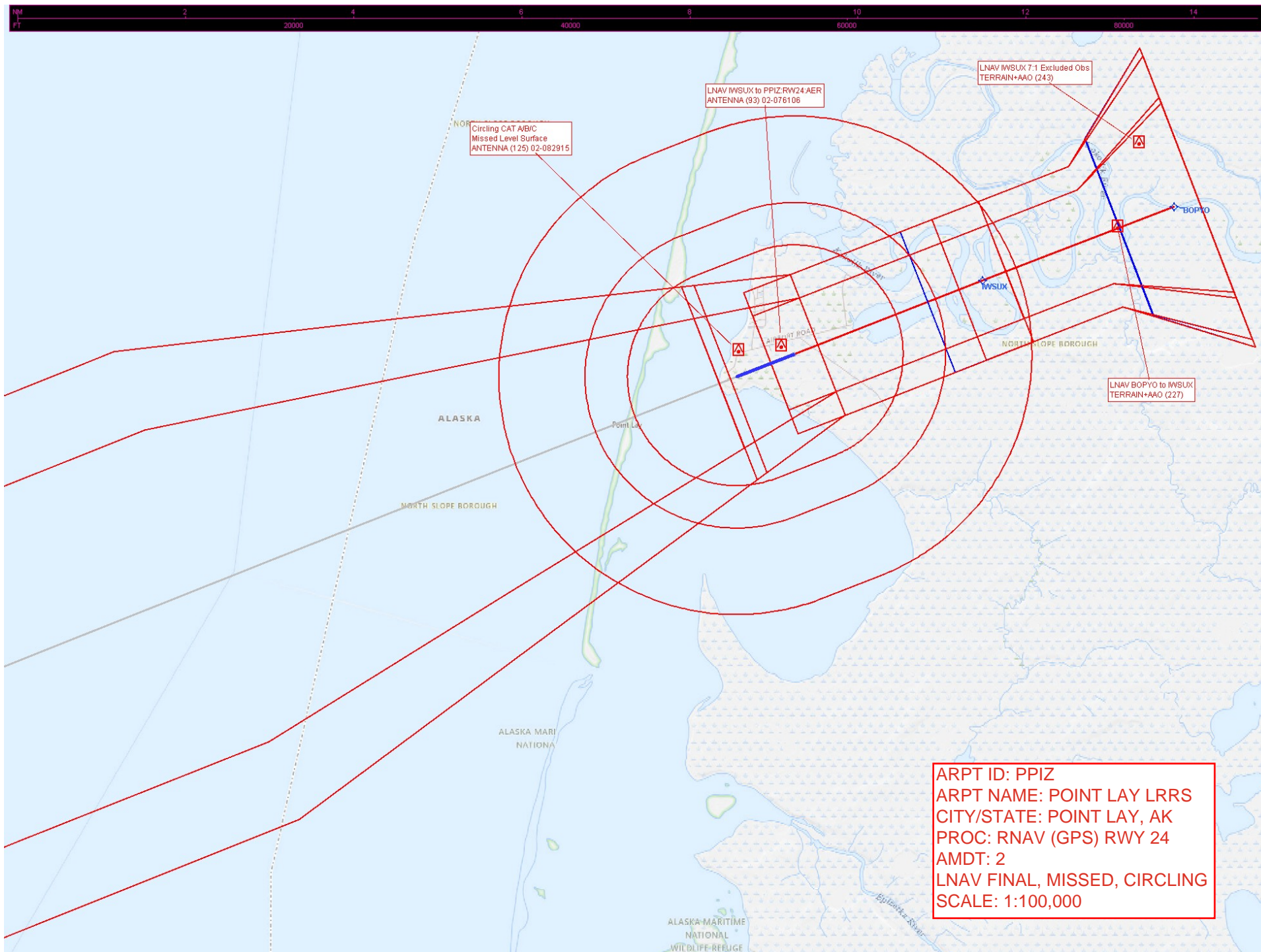
POINT LAY LRRS (PIZ) (PPIZ)
AWOS-3P 135.15
29° 14' 43" 22.8

TAA Right Base 061 CW 151
TERRAIN+AAO (345)

TAA Straight-In 285 CW 331
TERRAIN+AAO (404)







ARPT ID: PPIZ
ARPT NAME: POINT LAY LRRS
CITY/STATE: POINT LAY, AK
PROC: RNAV (GPS) RWY 24
AMDT: 2
LNAV FINAL, MISSED, CIRCLING
SCALE: 1:100,000



Federal Aviation Administration

Initial Development Notification for AIRNAV Pending Records

To: Julie Morgan, Manager Aeronautical Data Team, AJV-A31

From: Marlon Robinson, Manager Instrument Flight Procedures Projects Team, AJV-A45

Subject: **ACTION:** Request for Pending Records **PPIZ__POINT LAY LRRS, , AK US**

The Magnetic Variation (MV) data for the airport(s) and/or facility(s) listed will be revised effective concurrent with the publication of the procedure(s) listed below. Estimated Chart Date: 12/26/2024

Current/Assigned MV E 15 2010 New MV E 8 2025

ECD	Airport ID	Procedure Name	AMDT #	Task Report Type Selections
12/26/2024	PPIZ	RNAV (GPS) RWY 24	AMDT 2	MAGVAR
12/26/2024	PPIZ	RNAV (GPS) RWY 6	AMDT 2	MAGVAR

NAVAID ID / RWY	Type / Old No.	Use / New RWY/Note
RWY	23	24
RWY	5	6

The PIZ NDB is unusable and will be decommissioned.
NDB RWY 5 AMDT 1A will be canceled concurrently.
Runway numbers will change from 5/23 to 6/24.

IF you have any questions please notify: john.bordy@faa.gov

Processed Tuesday, May 21, 2024