

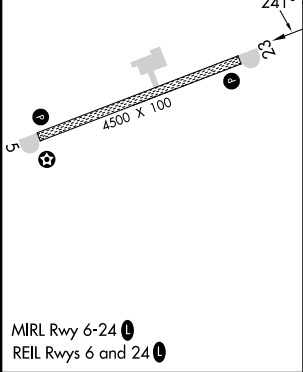
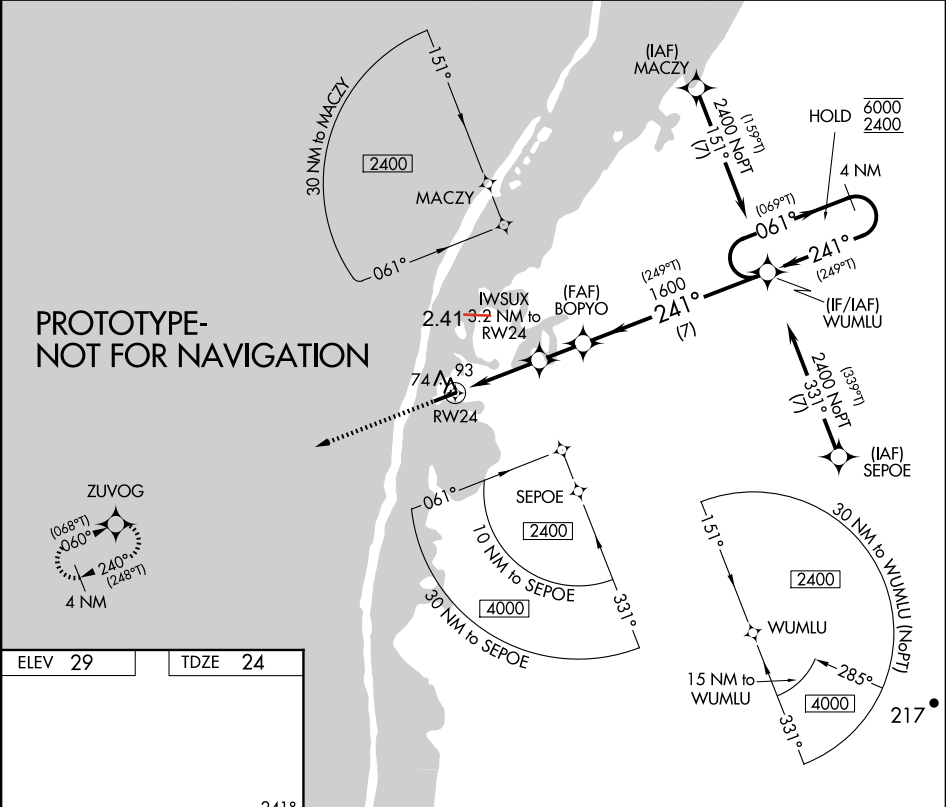
APP CRS	Rwy Ldg	4500
241°	TDZE	24
	Apt Elev	29

# RNAV (GPS) RWY 24

POINT LAY LRRS (PIZ)(PPIZ)

RNP APCH - GPS.	MISSED APPROACH: Climb to 2400 direct ZUVOG and hold.
☁-33°C When local altimeter setting not received, procedure NA.	

AWOS-3P 135.65	ANCHORAGE CENTER 119.65 363.25	BARROW RADIO 122.4	CTAF 122.8 ①
-------------------	-----------------------------------	-----------------------	-----------------



2400	ZUVOG	IWSUX	BOPYO	WUMLU	4 NM Holding Pattern
2.41 NM to RWY 24	1.1 NM to RWY 24	≤ 3.00° TCH 35	1600	061° (249°T)	241° (249°T)
1.1	2.1	1.7	7		
CATEGORY	A	B	C	D	
LNAV MDA	400-1	376 (400-1)		NA	
CIRCLING	440-1 411 (500-1)	480-1 451 (500-1)	480-1½ 451 (500-1½)	NA	