



Flight Procedures Cover Page	Task Action: P-NOTAM	Task Type: IAP	Estimated Chart Date: 08/12/2021	APWS Task ID: ACD2EF3A1B2240C8AAE7DAA7C1E5E9B9	APWS Project ID: A359D1680CBB41D2A6A067BCE184848F
Procedure: RNAV (GPS) RWY 35 AMDT 1C		Enroute: NO	Specialist: Marsh, Andre		Agreement Number:
Airport ID: KOGB			Airport City: ORANGEBURG		State: SC
Facility ID:	Facility Type:	Flight Inspection Remark Type:			
<p>Procedure Comments: P-NOTAM CIRCLING RADII INCREASE CONTACT JASON KRETSCHMER, AJV-A421, 405-954-4019</p> <p style="text-align: center;"><i>Digitally signed by</i> JASON KRETSCHMER Jun 22, 2021</p> <div style="text-align: right;">   </div>					

WAAS CH 97418 W35A	APP CRS 354°	Rwy Idg TDZE Apt Elev	5399 186 195
--	------------------------	-----------------------------	---



RNAV (GPS) RWY 35

ORANGEBURG MUNI (OGB)

⚠

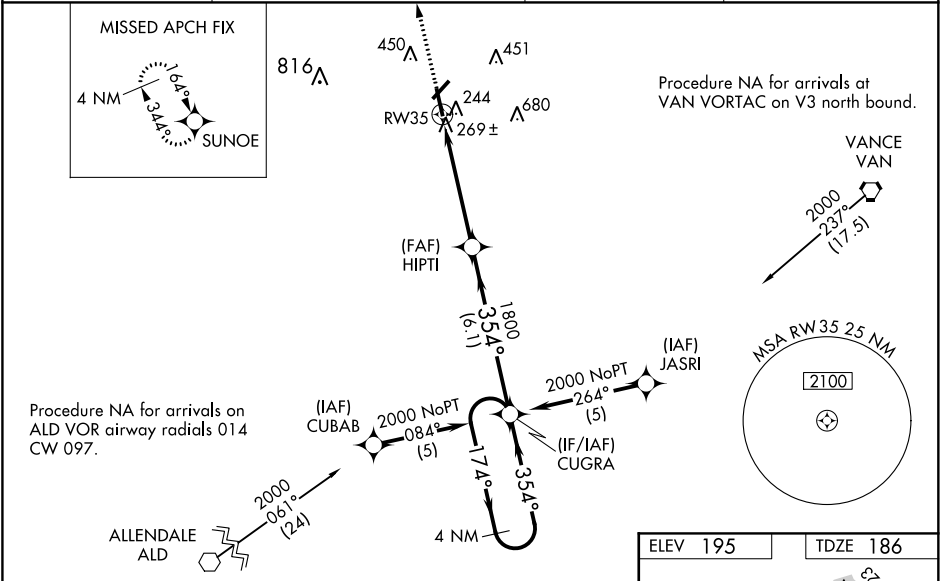
⚠

For uncompensated Baro-VNAV systems, LNAV/VNAV NA below -15°C (5°F) or above 48°C (118°F). DME/DME RNP-0.3 NA. Baro-VNAV and VDP NA when using Columbia Metro altimeter setting. When local altimeter setting not received, use Columbia Metro altimeter setting: increase LPV DA to 515 feet, LNAV/VNAV DA to 618 feet and all visibilities ¼ SM; increase all MDAs 80 feet and visibility Cat C and Circling Cat D ¼ SM. For inop ALS, increase LPV Cat A/B visibility to ¾ SM. For inop ALS when using Columbia Metro altimeter setting, increase LPV Cat A/B visibility to 1½ SM, and LNAV/VNAV Cat A/B to 1½ SM. Circling Rwy 17 NA at night.

ODALS

MISSED APPROACH: Climb to 2000 direct SUNOE and hold.

ASOS 118.525	COLUMBIA APP CON 124.15 338.2	UNICOM 122.7 (CTAF) 0	GCO 125.675
------------------------	---	---------------------------------	-----------------------



2000	SUNOE	VGSI and RNAV glidepath not coincident (VGSI Angle 3.00/TCH 37).				4 NM Holding Pattern
* LNAV only.						GP 3.00° TCH 42
CATEGORY		A	B	C	D	
LPV DA			436-¾	250 (300-¾)		
LNAV/VNAV DA			539-1¼	353 (400-1¼)		
LNAV MDA		640-¾	454 (500-¾)	640-1¼ 454 (500-1½)	640-1½ 454 (500-1½)	
CIRCLING		720-1 525 (600-1)	800-1 605 (700-1)	800-1¾ 605 (700-1¾)	900-2¼ 705 (800-2¼)	

