

DME DME Assessment Results for SKILS5 path EYESS_NAYES

Results Summary

Flyability:	Completed
DME/DME:	Completed - No Critical DMEs
Name:	Miles CTR Carpenter
Project File:	C:\Users\Miles CTR Carpenter\Desktop\PBN Team 1\KDCA\KDCA STARs\KDCA SKILS5 STAR\KDCA SKILS5 STAR DME 20221101_1412 EDT\SKILS5 (RNAV) STAR DME 20221101.tgs
Output File:	C:\Users\Miles CTR Carpenter\Desktop\PBN Team 1\KDCA\KDCA STARs\KDCA SKILS5 STAR\KDCA [IFPA] SKILS5 20221220_0618 EST\EYESS_NAYES\KDCA SKILS5 RNAV STAR EYESS NAYES 20221220_0618 EST.pdf
Procedure Name:	SKILS5
Software: DmeDmePlugin:	7.0.2
Date/Time:	12/20/2022 06:18 EST
Databases:	DTED MAX

Failures

No Failures

Warnings

No Warnings

Informational

No Informational

Notes For Flight Check

None

Flight Plan

Name	Type	Lat/Lon	Altitude (ft)	VNAV Mode	Ground Speed (kts)	Turn Type	Leg Type
EYESS	WP	N38° 58' 18.75", W076° 53' 48.84"	4000	VNAV	250	FLY_BY	TF
EDDWD	WP	N38° 58' 34.80", W077° 01' 38.25"	4000	VNAV	250	FLY_BY	TF
MEGGS	WP	N39° 02' 07.88", W077° 05' 55.86"	4000	VNAV	250	FLY_BY	TF
NAYES	WP	N39° 08' 01.02", W077° 13' 15.81"	3000	VNAV	250	FLY_OVER	TF

Flyability

Flight Type:	RNAV_STAR
Selected Airport:	KDCA [IFPA]
Climb Gradient:	None assigned
Speeds:	200 Ground Speed to 11000 FT
	240 Ground Speed to 18000 FT
	260 Ground Speed to 24000 FT
	340 Ground Speed above 24000 FT
Descent During a Turn:	Allowed
VNAV Mode:	Flight Plan

DME DME Assessment Results for SKILS5 path EYESS_NAYES

DME/DME	
RNP:	RNP 2
Flight Mode:	Manual
Line of Sight (DTED Level 0 Max):	Evaluated
Inertial Drift:	Enabled
Initial Drift:	0.558 NM
INS Drift Rate:	8.0 NM/Hour
Range Mode:	OSV
RNP Edges:	Evaluated
Min DME Range:	3.0 NM
DME Types:	DME, VOR-DME, VORTAC, TACAN
DME Include Angles:	30 to 150
Critical DMEs:	Not Allowed
DoD Facilities:	Included
Foreign Facilities:	Not included
High DMEs:	Included
Low DMEs:	Included
Terminal DMEs:	Included
Flight Check DMEs:	Not selected
Higher Altitudes:	Not Evaluated
Near Maximum Altitude:	Not Evaluated
Automatic ESVs:	Not enabled
Disabled DMEs:	FQM,SFK

DME/DME (Continued)										
DMEs Used										
#	Name	Lat/Lon	MAGVAR	Range	Type	Source	Critical	Status	Time	Distance
1	OTT	N38° 42' 21.14", W076° 44' 41.09"	10.0 W	40	L	IFPA	NO	Enabled	67.7 %	67.7 %
2	BAL	N39° 10' 15.83", W076° 39' 40.52"	11.0 W	40	L	IFPA	NO	Enabled	100 %	100 %
3	AML	N38° 56' 04.54", W077° 28' 00.13"	8.0 W	40	L	IFPA	NO	Enabled	100 %	100 %
4	ADW	N38° 48' 25.99", W076° 51' 58.52"	10.0 W	40	L	IFPA	NO	Enabled	100 %	100 %
5	EMI	N39° 29' 42.03", W076° 58' 42.86"	8.0 W	130	H	IFPA	NO	Enabled	100 %	100 %
6	DCA	N38° 51' 34.03", W077° 02' 11.17"	9.0 W	40	L	IFPA	NO	Enabled	100 %	100 %
7	FQM	N41° 20' 18.81", W076° 46' 29.52"	9.0 W	40	L	IFPA	NO	Disabled		
8	SFK	N41° 41' 42.91", W077° 25' 11.66"	8.0 W	40	L	IFPA	NO	Disabled		

Flight Check DME Selection						
Distance [NM]	Selected DMEs					Alternate
0.0	AML	EMI	ADW	OTT	DCA	BAL
13.1	BAL	DCA	AML	ADW	EMI	

Inertial Drift Segments			
#	Start Location	End Location	Length [NM]

Available DMEs by Waypoints			
Waypoint Before	Waypoint After	DME List	Suggested DMEs
EYESS	EDDWD	AML, EMI, DCA, ADW, BAL, OTT	
EDDWD	MEGGS	AML, EMI, DCA, ADW, BAL, OTT	
MEGGS	NAYES	AML, EMI, DCA, ADW, BAL, OTT	

DME DME Assessment Results for SKILS5 path EYESS_NAYES

User Data Files

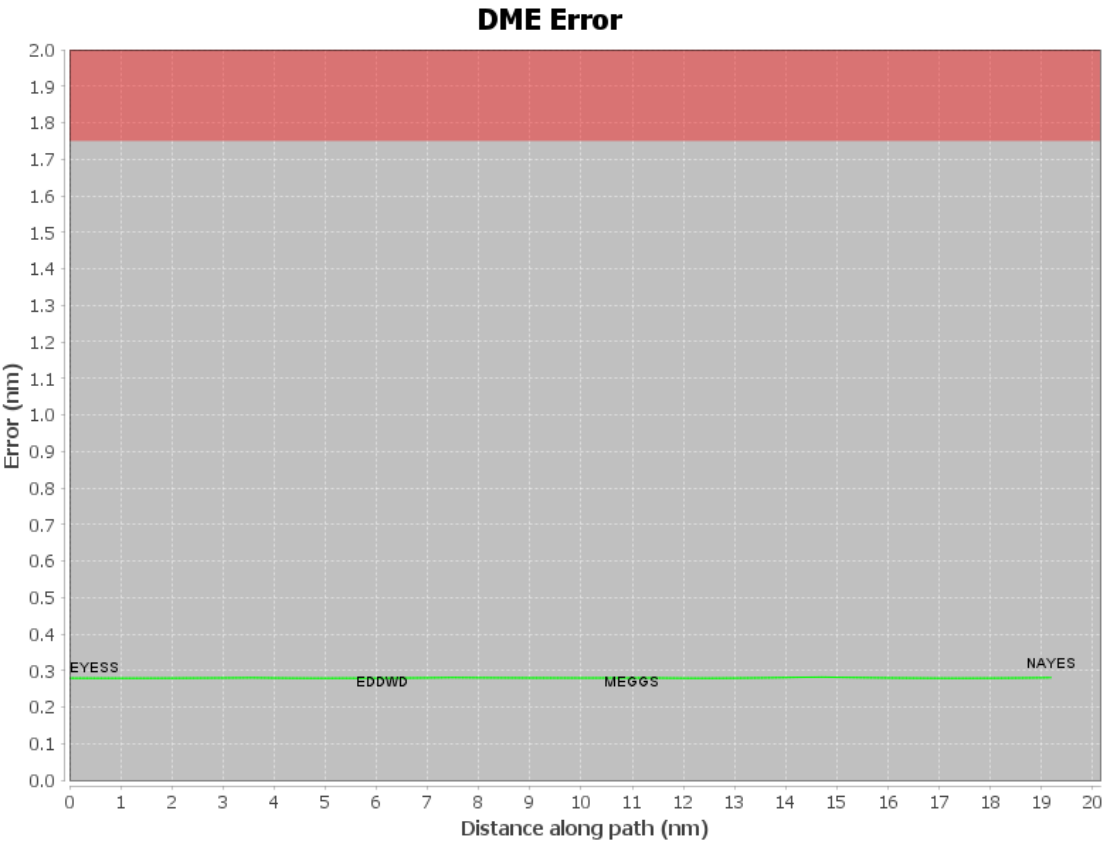
File Name

None

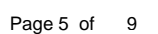
User DMEs

#	Name	Lat/Lon	MAGVAR	Range	Elevation [ft]	Frequency	Replaces	Status
1	CSN FAA 682017-21 CSN [IFPA]	N38° 38' 28.33", W077° 51' 55.80"	6.0 W	130	441.8	116.3	CSN FAA 682017-21	
ESV:		Bearing [True]: 44.0° to 154.0° Bearing [Mag]: 50.0° to 160.0°				Arc Distance: Out to 82.0 NM Altitude: 7000.0 to 16000.0 ft		
2	JST FAA 704125 - 027 JST [IFPA]	N40° 19' 00.21", W078° 50' 03.00"	6.0 W	40	2279.1	113.0	JST FAA 704125 - 027	
ESV:		Bearing [True]: 34.0° to 64.0° Bearing [Mag]: 40.0° to 70.0°				Arc Distance: Out to 65.0 NM Altitude: 4900.0 to 18000.0 ft		
3	MIP FAA 703969 - 008 MIP [IFPA]	N41° 01' 24.21", W076° 39' 55.04"	9.0 W	40	1000	109.2	MIP FAA 703969 - 008	
ESV:		Bearing [True]: 221.0° to 271.0° Bearing [Mag]: 230.0° to 280.0°				Arc Distance: Out to 65.0 NM Altitude: 4900.0 to 18000.0 ft		

DME DME Assessment Results for SKILS5 path EYESS_NAYES

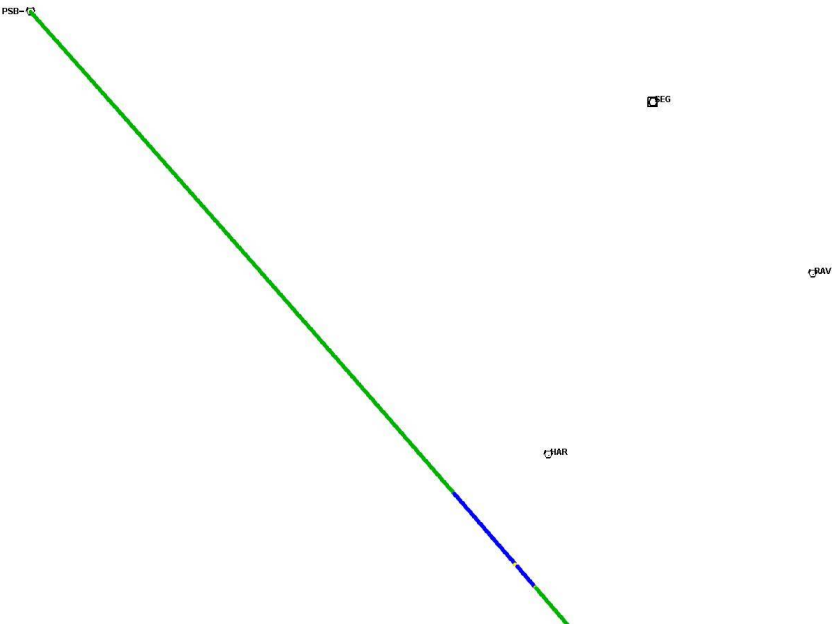


Graphic Depiction 1



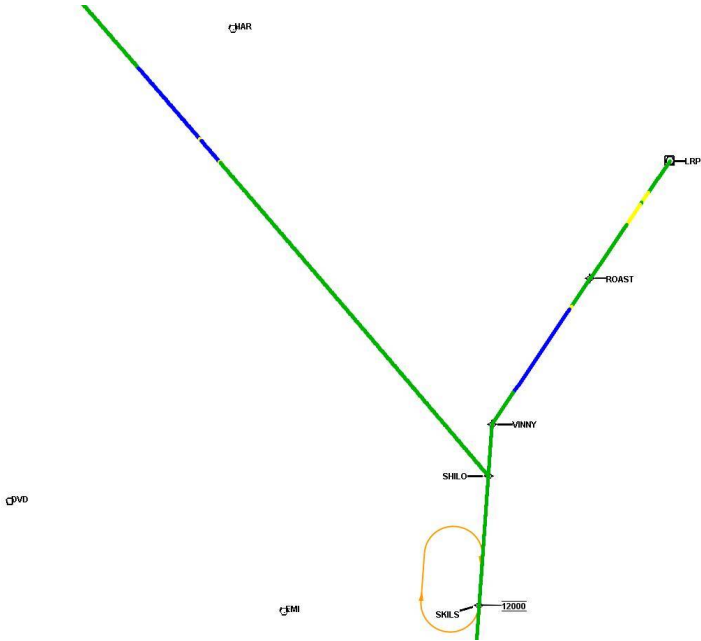
DME DME Assessment Results for SKILS5 path EYESS_NAYES

Graphic Depiction 2



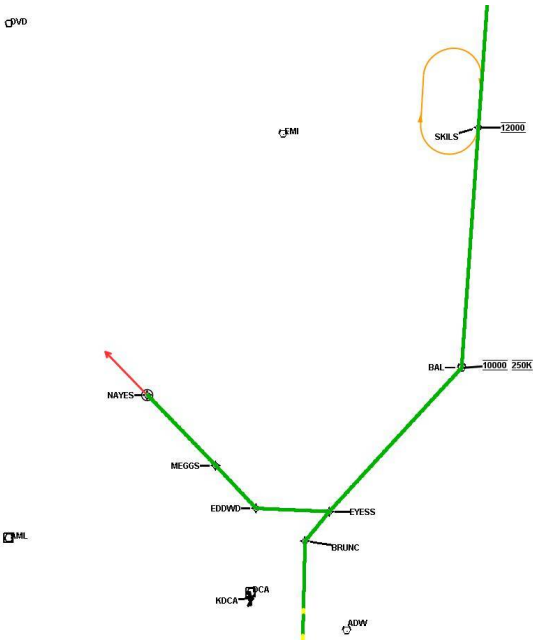
DME DME Assessment Results for SKILS5 path EYESS_NAYES

Graphic Depiction 3



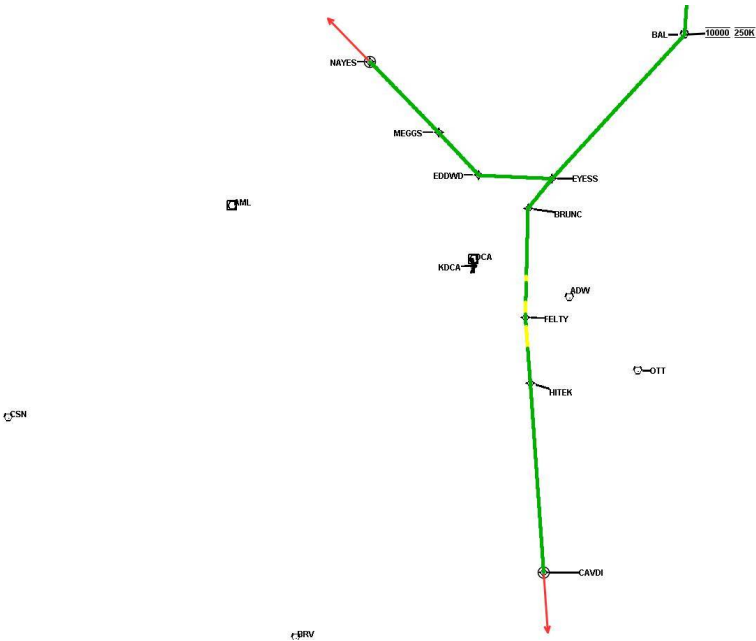
DME DME Assessment Results for SKILS5 path EYESS_NAYES

Graphic Depiction 4



DME DME Assessment Results for SKILS5 path EYESS_NAYES

Graphic Depiction 5



DME DME Assessment Results for SKILS5 path LRP_CAVDI

Results Summary

Flyability:	Completed
DME/DME:	Completed - No Critical DMEs
Name:	Miles CTR Carpenter
Project File:	C:\Users\Miles CTR Carpenter\Desktop\PBN Team 1\KDCA\KDCA STARs\KDCA SKILS5 STAR\KDCA SKILS5 STAR DME 20221101_1412 EDT\SKILS5 (RNAV) STAR DME 20221101.tgs
Output File:	C:\Users\Miles CTR Carpenter\Desktop\PBN Team 1\KDCA\KDCA STARs\KDCA SKILS5 STAR\KDCA [IFPA] SKILS5 20221220_0618 EST\LRP_CAVDI\KDCA SKILS5 RNAV STAR LRP CAVDI 20221220_0618 EST.pdf
Procedure Name:	SKILS5
Software: DmeDmePlugin:	7.0.2
Date/Time:	12/20/2022 06:18 EST
Databases:	DTED MAX

Failures

No Failures

Warnings

No Warnings

Informational

No Informational

Notes For Flight Check

None

Flight Plan

Name	Type	Lat/Lon	Altitude (ft)	VNAV Mode	Ground Speed (kts)	Turn Type	Leg Type
LRP	WP	N40° 07' 11.91", W076° 17' 28.66"	9000	VNAV	250	FLY_BY	TF
ROAST	WP	N39° 57' 23.71", W076° 26' 01.01"	9000	VNAV	250	FLY_BY	TF
VINNY	WP	N39° 45' 16.64", W076° 36' 30.16"	8000	VNAV	250	FLY_BY	TF
SHILO	WP	N39° 41' 00.20", W076° 36' 53.61"	8000	VNAV	250	FLY_BY	TF
SKILS	WP	N39° 30' 14.00", W076° 37' 52.32"	8000	VNAV	250	FLY_BY	TF
BAL	WP	N39° 10' 15.83", W076° 39' 40.52"	6000	VNAV	250	FLY_BY	TF
EYESS	WP	N38° 58' 18.75", W076° 53' 48.84"	4000	VNAV	250	FLY_BY	TF
BRUNC	WP	N38° 55' 50.89", W076° 56' 24.24"	4000	VNAV	250	FLY_BY	TF
FELTY	WP	N38° 46' 46.15", W076° 56' 40.79"	4000	VNAV	250	FLY_BY	TF
HITEK	WP	N38° 41' 19.00", W076° 56' 09.00"	4000	VNAV	250	FLY_BY	TF
CAVDI	WP	N38° 25' 33.43", W076° 54' 43.49"	3000	VNAV	250	FLY_OVER	TF

DME DME Assessment Results for SKILS5 path LRP_CAVDI

Flyability	
Flight Type:	RNAV_STAR
Selected Airport:	KDCA [IFPA]
Climb Gradient:	None assigned
Speeds:	200 Ground Speed to 11000 FT
	240 Ground Speed to 18000 FT
	260 Ground Speed to 24000 FT
	340 Ground Speed above 24000 FT
Descent During a Turn:	Allowed
VNAV Mode:	Flight Plan

DME/DME	
RNP:	RNP 2
Flight Mode:	Manual
Line of Sight (DTED Level 0 Max):	Evaluated
Inertial Drift:	Enabled
Initial Drift:	0.558 NM
INS Drift Rate:	8.0 NM/Hour
Range Mode:	OSV
RNP Edges:	Evaluated
Min DME Range:	3.0 NM
DME Types:	DME, VOR-DME, VORTAC, TACAN
DME Include Angles:	30 to 150
Critical DMEs:	Not Allowed
DoD Facilities:	Included
Foreign Facilities:	Not included
High DMEs:	Included
Low DMEs:	Included
Terminal DMEs:	Included
Flight Check DMEs:	Not selected
Higher Altitudes:	Not Evaluated
Near Maximum Altitude:	Not Evaluated
Automatic ESVs:	Not enabled
Disabled DMEs:	FQM,SFK

DME DME Assessment Results for SKILS5 path LRP_CAVDI

DME/DME (Continued)										
DMEs Used										
#	Name	Lat/Lon	MAGVAR	Range	Type	Source	Critical	Status	Time	Distance
1	PTW	N40° 13' 20.03", W075° 33' 36.90"	9.0 W	40	L	IFPA	NO	Enabled	5.7 %	5.7 %
2	HAR	N40° 18' 08.06", W077° 04' 10.41"	10.0 W	40	L	IFPA	NO	Enabled	10.2 %	10.2 %
3	LRP	N40° 07' 11.91", W076° 17' 28.66"	9.0 W	40	L	IFPA	NO	Enabled	14 %	14 %
4	RAV	N40° 33' 12.21", W076° 35' 57.77"	11.0 W	40	L	IFPA	NO	Enabled	11.4 %	11.3 %
5	CSN	N38° 38' 28.33", W077° 51' 55.80"	6.0 W	130	H	IFPA	NO	Enabled	4 %	4 %
6	NHK	N38° 16' 51.77", W076° 24' 38.28"	10.0 W	40	L	IFPA	NO	Enabled	19.2 %	19.3 %
7	ADW	N38° 48' 25.99", W076° 51' 58.52"	10.0 W	40	L	IFPA	NO	Enabled	43.8 %	43.8 %
8	OTT	N38° 42' 21.14", W076° 44' 41.09"	10.0 W	40	L	IFPA	NO	Enabled	55 %	55 %
9	BAL	N39° 10' 15.83", W076° 39' 40.52"	11.0 W	40	L	IFPA	NO	Enabled	59.2 %	59.2 %
10	PXT	N38° 17' 16.28", W076° 24' 00.83"	10.0 W	40	L	IFPA	NO	Enabled	19.2 %	19.3 %
11	MXE	N39° 55' 04.98", W075° 40' 14.96"	9.0 W	40	L	IFPA	NO	Enabled	13.3 %	13.3 %
12	AML	N38° 56' 04.54", W077° 28' 00.13"	8.0 W	40	L	IFPA	NO	Enabled	39.4 %	39.4 %
13	EMI	N39° 29' 42.03", W076° 58' 42.86"	8.0 W	130	H	IFPA	NO	Enabled	61.7 %	61.7 %
14	DCA	N38° 51' 34.03", W077° 02' 11.17"	9.0 W	40	L	IFPA	NO	Enabled	52.9 %	52.9 %
15	FQM	N41° 20' 18.81", W076° 46' 29.52"	9.0 W	40	L	IFPA	NO	Disabled		
16	SFK	N41° 41' 42.91", W077° 25' 11.66"	8.0 W	40	L	IFPA	NO	Disabled		

DME DME Assessment Results for SKILS5 path LRP_CAVDI

Flight Check DME Selection						
Distance [NM]	Selected DMEs					Alternate
0.0	RAV	PTW	MXE			
3.2	RAV	PTW	HAR	LRP	MXE	
4.2	RAV	PTW	MXE	LRP		
4.4	RAV	PTW	HAR	LRP	MXE	
6.4	HAR	LRP	MXE	RAV		
10.0	HAR	LRP	EMI	MXE	RAV	
12.5	HAR	LRP	EMI	MXE		
14.6	HAR	EMI	LRP	MXE	RAV	
14.8						
23.1	BAL	EMI				
35.6	BAL	EMI	LRP			
38.9	BAL	EMI	LRP	CSN		
39.7	BAL	EMI	CSN			
43.4	BAL	EMI				
45.8	ADW	EMI	BAL			
46.7	ADW	EMI	DCA	BAL		
50.0	DCA	EMI	ADW	OTT	BAL	
52.1	DCA	EMI	ADW	OTT		
63.9	AML	EMI	DCA	OTT	ADW	
82.3	AML	EMI	OTT	BAL	ADW	
82.9	AML	EMI	OTT	BAL		
86.5	OTT	BAL	ADW	DCA	AML	EMI
87.0	OTT	BAL	AML			
88.2	OTT	BAL	DCA	AML		
88.7	OTT	BAL	DCA	AML	PXT	NHK
89.6	OTT	BAL	AML	DCA		
90.7	AML	BAL	OTT	PXT	NHK	DCA
102.7	AML	OTT	NHK	PXT	ADW	DCA
107.8	OTT	NHK	PXT	ADW	DCA	

Inertial Drift Segments			
#	Start Location	End Location	Length [NM]
1	N39° 54' 51.45", W076° 28' 13.14"	N39° 47' 59.45", W076° 34' 09.67"	8.2472

Available DMEs by Waypoints			
Waypoint Before	Waypoint After	DME List	Suggested DMEs
LRP	ROAST	EMI, PTW, RAV, HAR, MXE, LRP	
ROAST	VINNY	EMI, RAV, HAR, LRP, MXE, BAL	
VINNY	SHILO	EMI, BAL	
SHILO	SKILS	EMI, LRP, BAL, CSN	
SKILS	BAL	EMI, DCA, ADW, BAL, OTT, CSN	
BAL	EYESS	EMI, AML, DCA, ADW, BAL, OTT	
EYESS	BRUNC	AML, EMI, DCA, ADW, BAL, OTT	
BRUNC	FELTY	AML, EMI, NHK, DCA, ADW, BAL, PXT, OTT	
FELTY	HITEK	AML, NHK, DCA, BAL, PXT, OTT	
HITEK	CAVDI	AML, NHK, DCA, ADW, BAL, PXT, OTT	

DME DME Assessment Results for SKILS5 path LRP_CAVDI

User Data Files

File Name

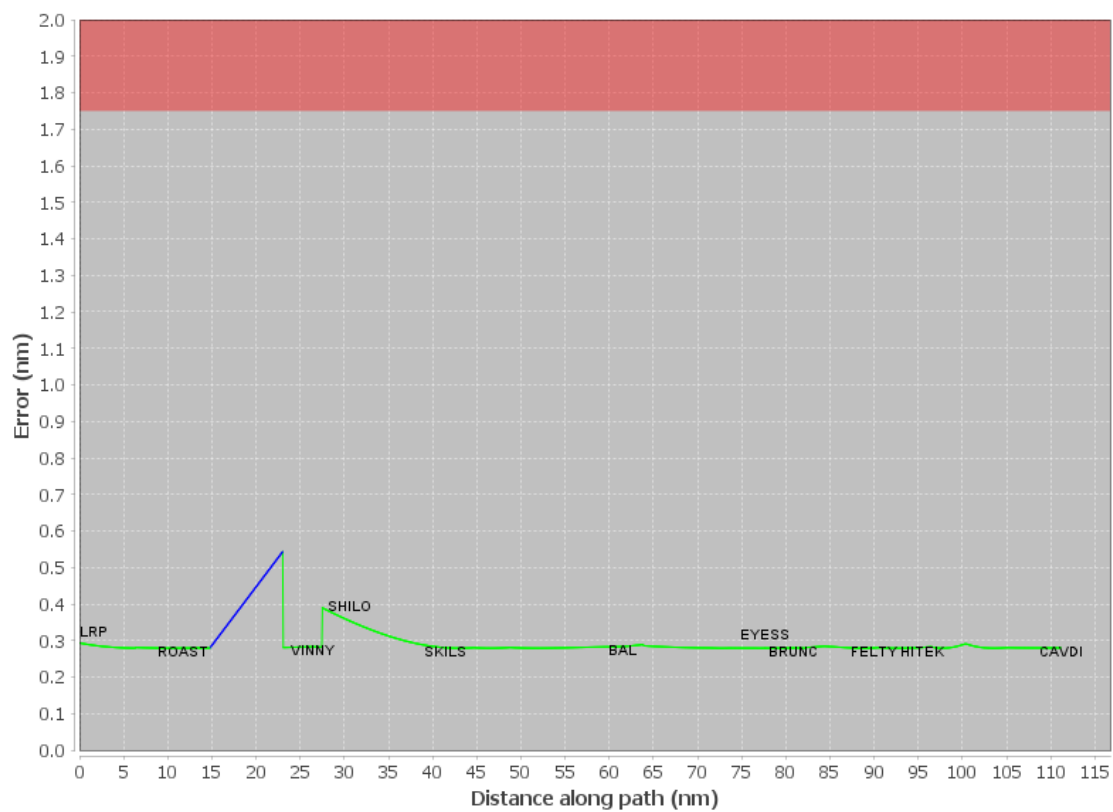
None

User DMEs

#	Name	Lat/Lon	MAGVAR	Range	Elevation [ft]	Frequency	Replaces	Status
1	CSN FAA 682017-21 CSN [IFPA]	N38° 38' 28.33", W077° 51' 55.80"	6.0 W	130	441.8	116.3	CSN FAA 682017-21	
ESV:		Bearing [True]: 44.0° to 154.0° Bearing [Mag]: 50.0° to 160.0°				Arc Distance: Out to 82.0 NM Altitude: 7000.0 to 16000.0 ft		
2	JST FAA 704125 - 027 JST [IFPA]	N40° 19' 00.21", W078° 50' 03.00"	6.0 W	40	2279.1	113.0	JST FAA 704125 - 027	
ESV:		Bearing [True]: 34.0° to 64.0° Bearing [Mag]: 40.0° to 70.0°				Arc Distance: Out to 65.0 NM Altitude: 4900.0 to 18000.0 ft		
3	MIP FAA 703969 - 008 MIP [IFPA]	N41° 01' 24.21", W076° 39' 55.04"	9.0 W	40	1000	109.2	MIP FAA 703969 - 008	
ESV:		Bearing [True]: 221.0° to 271.0° Bearing [Mag]: 230.0° to 280.0°				Arc Distance: Out to 65.0 NM Altitude: 4900.0 to 18000.0 ft		

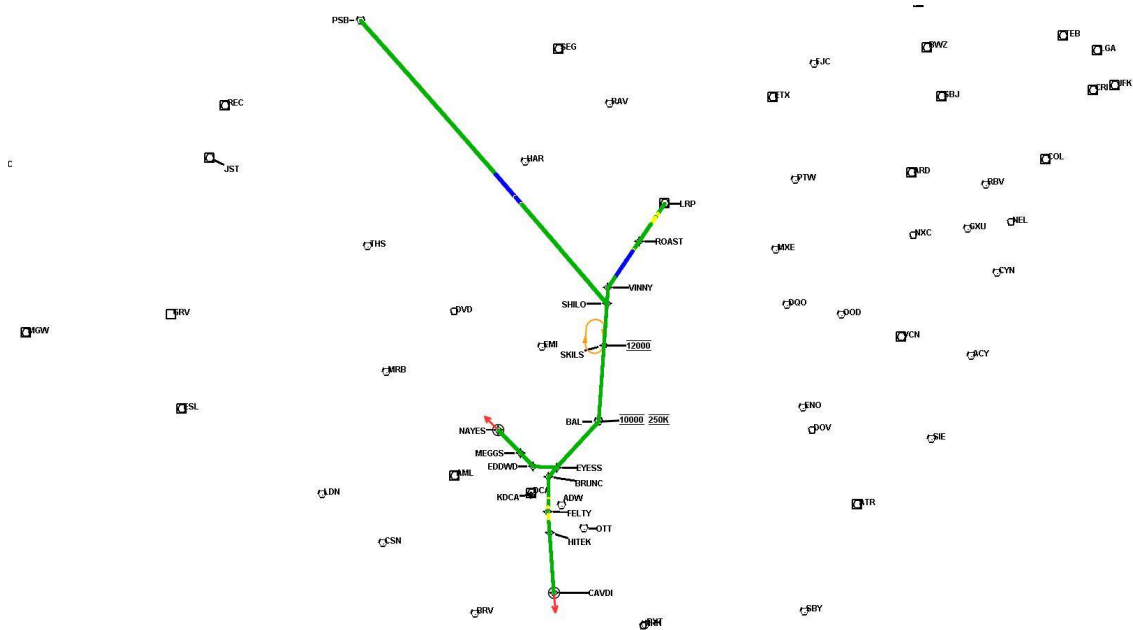
DME DME Assessment Results for SKILS5 path LRP_CAVDI

DME Error



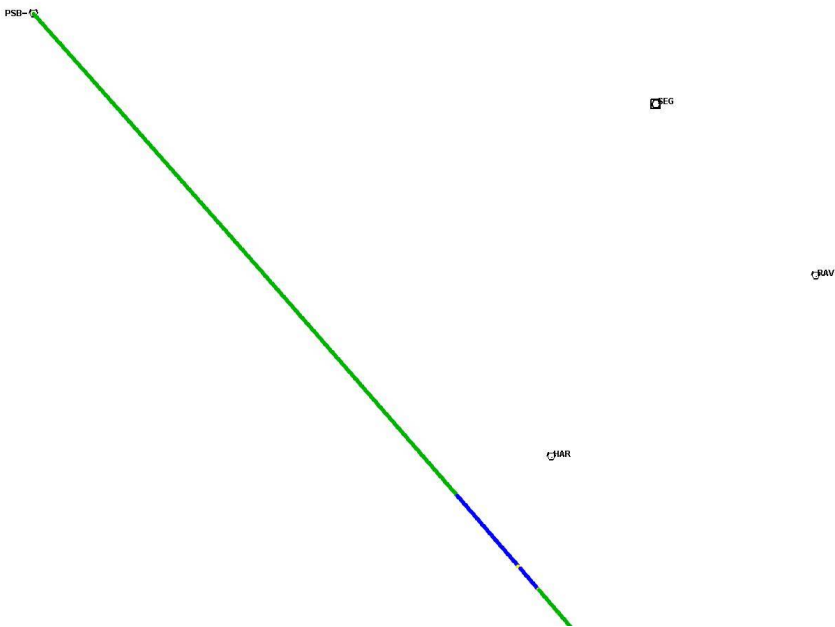
Graphic Depiction 1

DME DME Assessment Results for SKILS5 path LRP_CAVDI



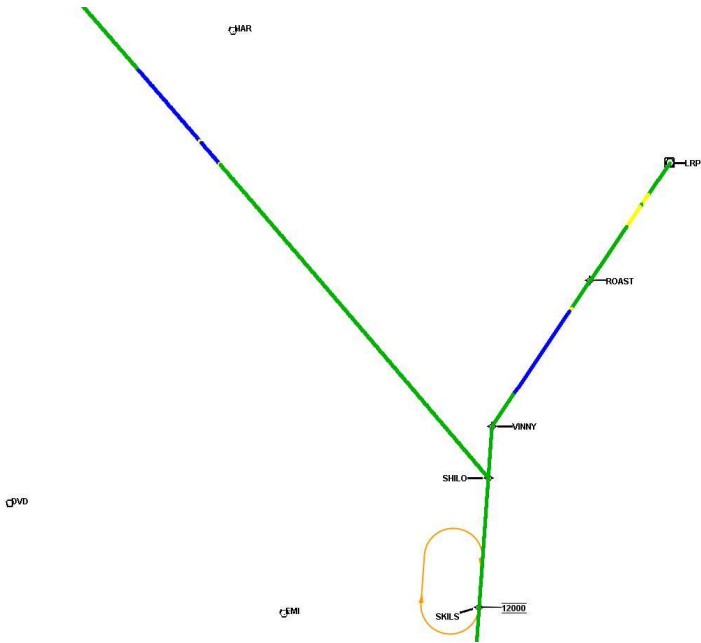
Graphic Depiction 2

DME DME Assessment Results for SKILS5 path LRP_CAVDI



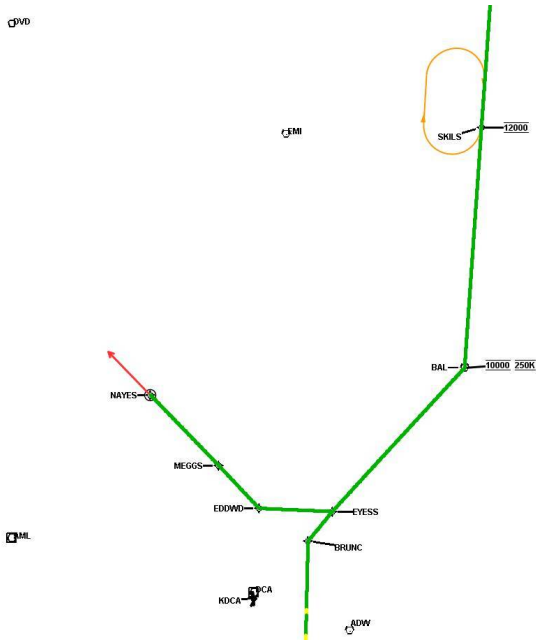
Graphic Depiction 3

DME DME Assessment Results for SKILS5 path LRP_CAVDI



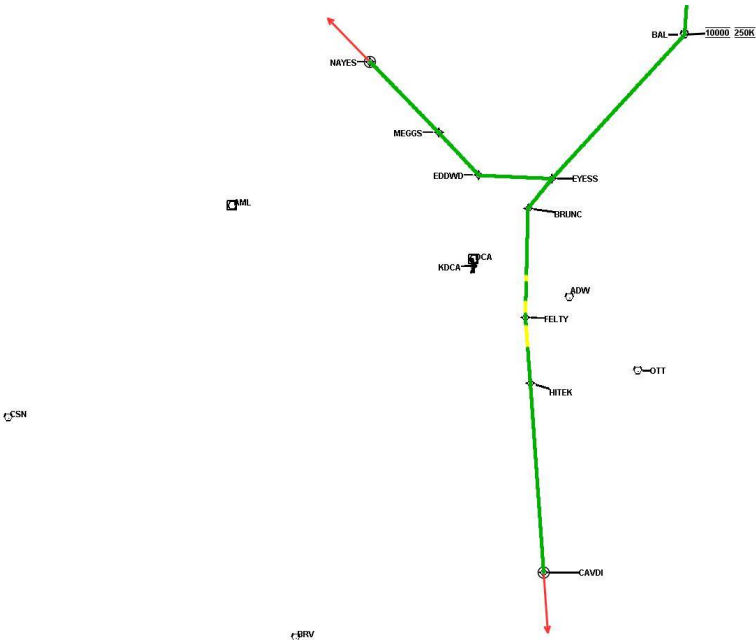
Graphic Depiction 4

DME DME Assessment Results for SKILS5 path LRP_CAVDI



Graphic Depiction 5

DME DME Assessment Results for SKILS5 path LRP_CAVDI



DME DME Assessment Results for SKILS5 path PSB_SHILO

Results Summary

Flyability:	Completed
DME/DME:	Completed - No Critical DMEs
Name:	Miles CTR Carpenter
Project File:	C:\Users\Miles CTR Carpenter\Desktop\PBN Team 1\KDCA\KDCA STARs\KDCA SKILS5 STAR\KDCA SKILS5 STAR DME 20221101_1412 EDT\SKILS5 (RNAV) STAR DME 20221101.tgs
Output File:	C:\Users\Miles CTR Carpenter\Desktop\PBN Team 1\KDCA\KDCA STARs\KDCA SKILS5 STAR\KDCA [IFPA] SKILS5 20221220_0618 EST\PSB_SHILO\KDCA SKILS5 RNAV STAR PSB SHILO 20221220_0618 EST.pdf
Procedure Name:	SKILS5
Software: DmeDmePlugin:	7.0.2
Date/Time:	12/20/2022 06:18 EST
Databases:	DTED MAX

Failures

No Failures

Warnings

No Warnings

Informational

No Informational

Notes For Flight Check

None

Flight Plan

Name	Type	Lat/Lon	Altitude (ft)	VNAV Mode	Ground Speed (kts)	Turn Type	Leg Type
PSB	WP	N40° 54' 58.53", W077° 59' 33.78"	8000	VNAV	250	FLY_BY	TF
SHILO	WP	N39° 41' 00.20", W076° 36' 53.61"	8000	VNAV	250	FLY_BY	TF

Flyability

Flight Type:	RNAV_STAR
Selected Airport:	KDCA [IFPA]
Climb Gradient:	None assigned
Speeds:	200 Ground Speed to 11000 FT
	240 Ground Speed to 18000 FT
	260 Ground Speed to 24000 FT
	340 Ground Speed above 24000 FT
Descent During a Turn:	Allowed
VNAV Mode:	Flight Plan

DME DME Assessment Results for SKILS5 path PSB_SHILO

DME/DME	
RNP:	RNP 2
Flight Mode:	Manual
Line of Sight (DTED Level 0 Max):	Evaluated
Inertial Drift:	Enabled
Initial Drift:	0.558 NM
INS Drift Rate:	8.0 NM/Hour
Range Mode:	OSV
RNP Edges:	Evaluated
Min DME Range:	3.0 NM
DME Types:	DME, VOR-DME, VORTAC, TACAN
DME Include Angles:	30 to 150
Critical DMEs:	Not Allowed
DoD Facilities:	Included
Foreign Facilities:	Not included
High DMEs:	Included
Low DMEs:	Included
Terminal DMEs:	Included
Flight Check DMEs:	Not selected
Higher Altitudes:	Not Evaluated
Near Maximum Altitude:	Not Evaluated
Automatic ESVs:	Not enabled
Disabled DMEs:	FQM,SFK

DME/DME (Continued)										
DMEs Used										
#	Name	Lat/Lon	MAGVAR	Range	Type	Source	Critical	Status	Time	Distance
1	SLT	N41° 30' 45.93", W077° 58' 12.40"	8.0 W	130	H	IFPA	NO	Enabled	2 %	2 %
2	PSB	N40° 54' 58.53", W077° 59' 33.78"	10.0 W	130	H	IFPA	NO	Enabled	37.8 %	37.8 %
3	SEG	N40° 47' 27.09", W076° 53' 02.55"	8.0 W	40	L	IFPA	NO	Enabled	27.5 %	27.5 %
4	ETG	N41° 12' 53.82", W078° 08' 33.92"	10.0 W	130	H	IFPA	NO	Enabled	21.1 %	21.1 %
5	HAR	N40° 18' 08.06", W077° 04' 10.41"	10.0 W	40	L	IFPA	NO	Enabled	68 %	68 %
6	THS	N39° 55' 59.62", W077° 57' 03.40"	7.0 W	40	L	IFPA	NO	Enabled	0.1 %	0.1 %
7	LRP	N40° 07' 11.91", W076° 17' 28.66"	9.0 W	40	L	IFPA	NO	Enabled	31.5 %	31.5 %
8	BAL	N39° 10' 15.83", W076° 39' 40.52"	11.0 W	40	L	IFPA	NO	Enabled	8.9 %	8.9 %
9	JST	N40° 19' 00.21", W078° 50' 03.00"	6.0 W	40	L	IFPA	NO	Enabled	15.6 %	15.6 %
10	RAV	N40° 33' 12.21", W076° 35' 57.77"	11.0 W	40	L	IFPA	NO	Enabled	7.1 %	7.1 %
11	MIP	N41° 01' 24.21", W076° 39' 55.04"	9.0 W	40	L	IFPA	NO	Enabled	42.6 %	42.6 %
12	EMI	N39° 29' 42.03", W076° 58' 42.86"	8.0 W	130	H	IFPA	NO	Enabled	35.3 %	35.3 %
13	FQM	N41° 20' 18.81", W076° 46' 29.52"	9.0 W	40	L	IFPA	NO	Disabled		
14	SFK	N41° 41' 42.91", W077° 25' 11.66"	8.0 W	40	L	IFPA	NO	Disabled		

DME DME Assessment Results for SKILS5 path PSB_SHILO

Flight Check DME Selection

Distance [NM]	Selected DMEs					Alternate
0.0	MIP	SLT	ETG	JST		
2.0	MIP	ETG	JST			
3.1	JST	PSB	MIP	ETG		
15.2	MIP	ETG	PSB			
17.2	MIP	ETG	PSB	HAR		
20.6	MIP	PSB	HAR			
26.0	MIP	PSB	SEG	HAR		
39.9	MIP	HAR	SEG			
41.5	HAR	SEG				
52.8						
60.6	THS	EMI	LRP	HAR	RAV	
60.8						
63.1	HAR	LRP	EMI	RAV		
69.9	HAR	LRP	EMI			
88.6	HAR	LRP	EMI	BAL		
93.6	BAL	EMI				

Inertial Drift Segments

#	Start Location	End Location	Length [NM]
1	N40° 14' 58.31", W077° 14' 20.68"	N40° 09' 03.09", W077° 07' 45.37"	7.7772
2	N40° 08' 53.57", W077° 07' 34.80"	N40° 07' 08.83", W077° 05' 38.56"	2.2915

Available DMEs by Waypoints

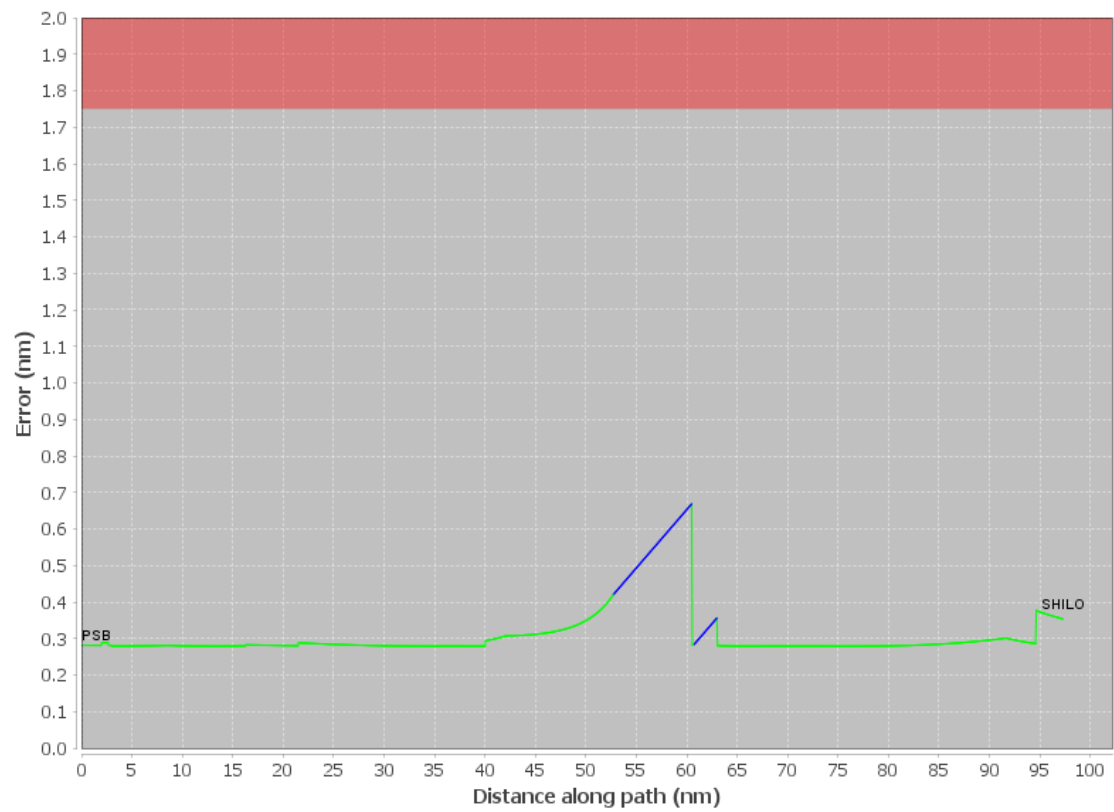
Waypoint Before	Waypoint After	DME List	Suggested DMEs
PSB	SHILO	EMI, SEG, MIP, RAV, HAR, ETG, JST, SLT, LRP, BAL, PSB, THS	

User Data Files

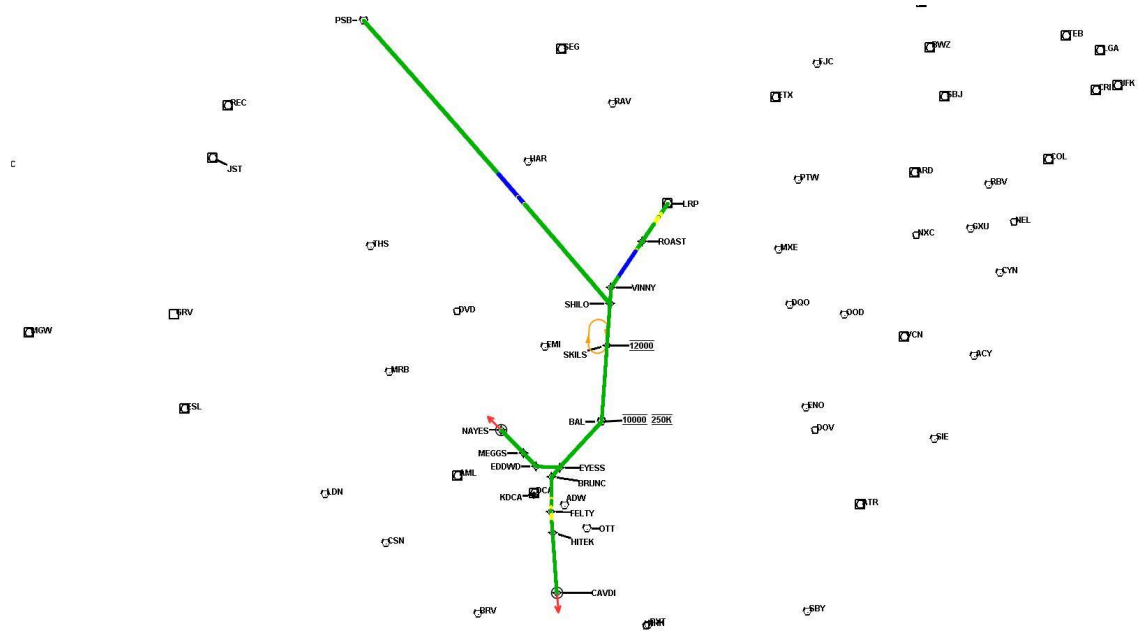
#	File Name							
None								
User DMEs								
#	Name	Lat/Lon	MAGVAR	Range	Elevation [ft]	Frequency	Replaces	Status
1	CSN FAA 682017-21 CSN [IFPA]	N38° 38' 28.33", W077° 51' 55.80"	6.0 W	130	441.8	116.3	CSN FAA 682017-21	
ESV:		Bearing [True]: 44.0° to 154.0° Bearing [Mag]: 50.0° to 160.0°				Arc Distance: Out to 82.0 NM Altitude: 7000.0 to 16000.0 ft		
2	JST FAA 704125 - 027 JST [IFPA]	N40° 19' 00.21", W078° 50' 03.00"	6.0 W	40	2279.1	113.0	JST FAA 704125 - 027	
ESV:		Bearing [True]: 34.0° to 64.0° Bearing [Mag]: 40.0° to 70.0°				Arc Distance: Out to 65.0 NM Altitude: 4900.0 to 18000.0 ft		
3	MIP FAA 703969 - 008 MIP [IFPA]	N41° 01' 24.21", W076° 39' 55.04"	9.0 W	40	1000	109.2	MIP FAA 703969 - 008	
ESV:		Bearing [True]: 221.0° to 271.0° Bearing [Mag]: 230.0° to 280.0°				Arc Distance: Out to 65.0 NM Altitude: 4900.0 to 18000.0 ft		

DME DME Assessment Results for SKILS5 path PSB_SHILO

DME Error

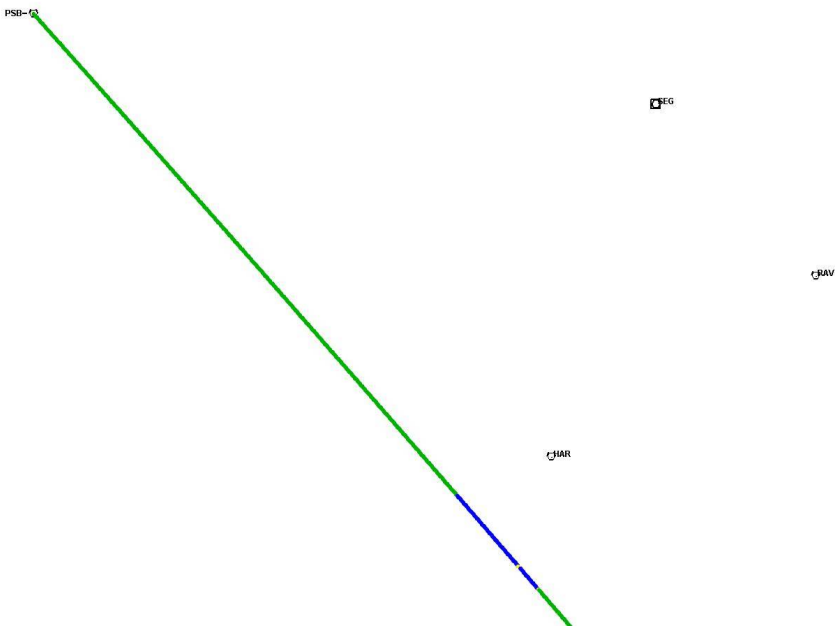


Graphic Depiction 1



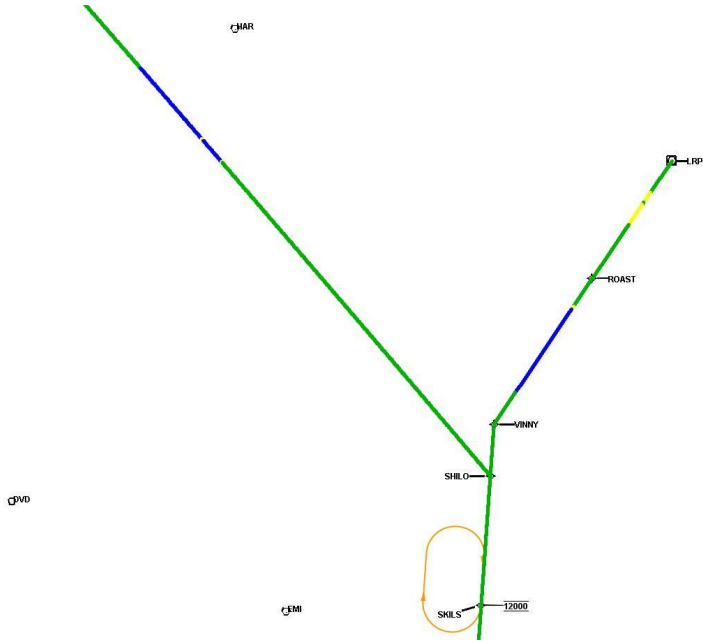
Graphic Depiction 2

DME DME Assessment Results for SKILS5 path PSB_SHILO



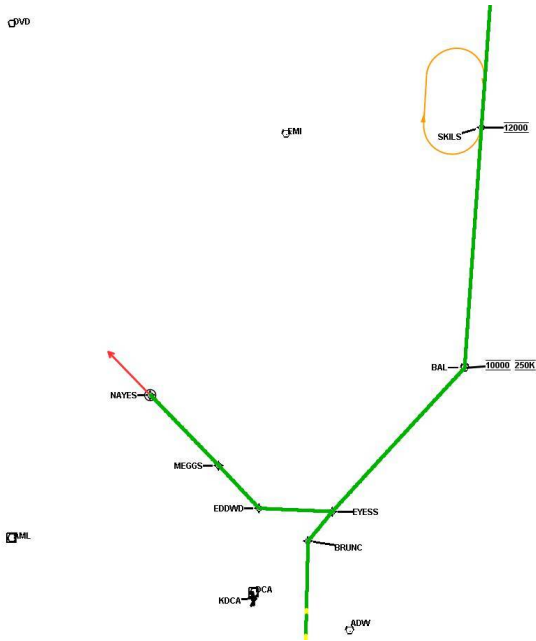
Graphic Depiction 3

DME DME Assessment Results for SKILS5 path PSB_SHILO



Graphic Depiction 4

DME DME Assessment Results for SKILS5 path PSB_SHILO



Graphic Depiction 5

DME DME Assessment Results for SKILS5 path PSB_SHILO

