



Flight Procedures Cover Page	Task Action: FLIGHT CHECK	Task Type: IAP	Estimated Chart Date: 02/20/2025	APWS Task ID: AC02665E27DB475580BA967A368BC1D8	APWS Project ID: 242AAC1B14D74F4EA0CC83D9E982186C
Procedure: RNAV (GPS) RWY 7 AMDT 4		Enroute: NO	Specialist: Bruno, John		Agreement Number:
Airport ID: KART			Airport City: WATERTOWN		State: NY
Facility ID:	Facility Type:	Flight Inspection Remark Type: New FC Slot			
<div>Procedure Comments: WOLLS OM DECOM, MATCH ILS PFAF CONTACT JOHN BORDY 405-954-0980</div> <div>QUALITY 20 CHECKED</div>					

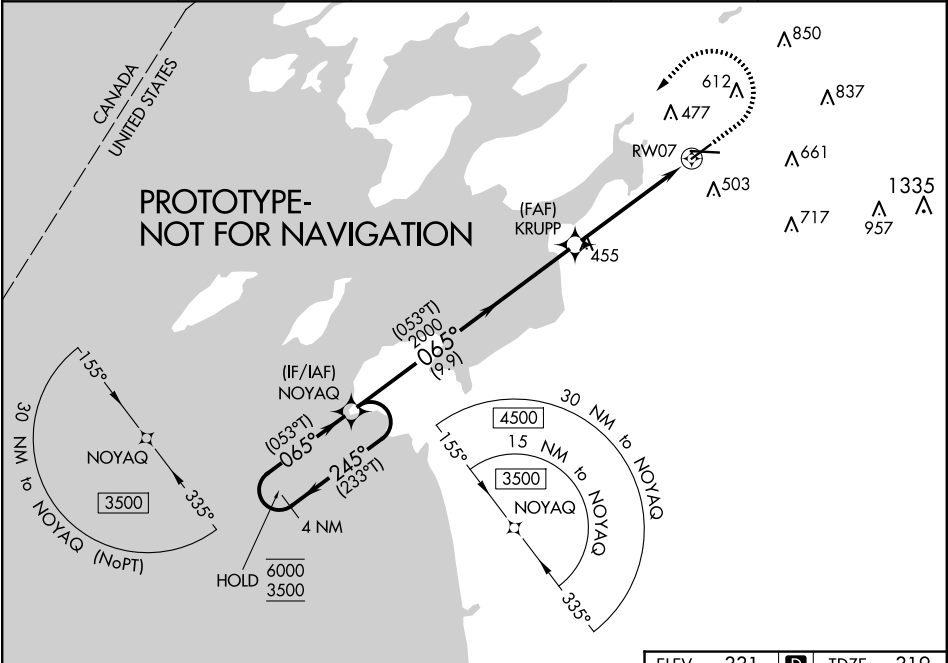
WAAS CH 82510 W07A	APP CRS 065°	Rwy Idg 4784 TDZE 319 Apt Elev 331
--	------------------------	---

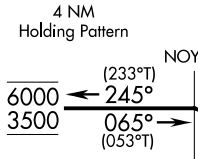
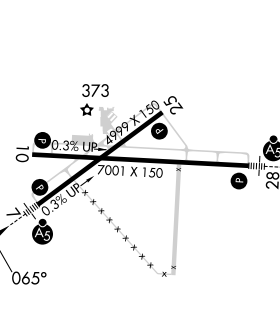

RNAV (GPS) RWY 7

WATERTOWN INTL (ART)

RNP APCH - GPS.	MALSR 	MISSED APPROACH: Climb to 900 then climbing left turn to 3500 direct NOYAQ and hold.
<div><div></div><div>For uncompensated Baro-VNAV systems, LNAV/VNAV NA below -20°C or above 54°C. For inop ALS, increase LNAV/VNAV visibilities all Cats to 1½ SM and LNAV Cat C/D visibilities to 1½ SM.</div></div>		

ASOS 132.325	KGTB ATIS 119.525	WHEELER-SACK APP CON 124.875 307.125	CLNC DEL 120.8	UNICOM 123.0 (CTAF) 0
------------------------	-----------------------------	--	--------------------------	---------------------------------



<div>4 NM Holding Pattern</div> <div></div> <div>GP 3.00° TCH 55</div>				<div>ELEV 331 D TDZE 319</div> <div></div>	
CATEGORY	A	B	C	D	
LPV DA	519-½ 200 (200-½)				
LNAV/VNAV DA	800-1 481 (500-1)				
LNAV MDA	800-½ 481 (500-½)	800-1 481 (500-1)			
 CIRCLING	960-1 629 (700-1)	980-1¾ 649 (700-1¾)		1080-2½ 749 (800-2½)	HIRL Rwy 7-25 0 MIRL Rwy 10-28 0

KART
WATERTOWN INTL
WATERTOWN, NY
500K
RNAV (GPS) RWY 7 AMDT 4

Chart information provided outside of U.S. airspace. Refer to DoD (NGA) or foreign charts and publications outside U.S. airspace.

Magnetic disturbance of as much as 38° exists at ground level in this vicinity.

Magnetic disturbance of as much as 9° exists at lake level in this vicinity.

Missed Level Surface
TOWER (850)
36-001626

LNAAVNAV
TERRAIN+VEG (511)

LNAAV KRUPP to KART.RW07.AER
TERRAIN+AAO (538)

Intermediate NOYQA to KRUPP
TERRAIN+AAO (647)

HILPT NOYQA_1
TERRAIN+AAO (597)

NOYQA
TERRAIN+AAO (597)

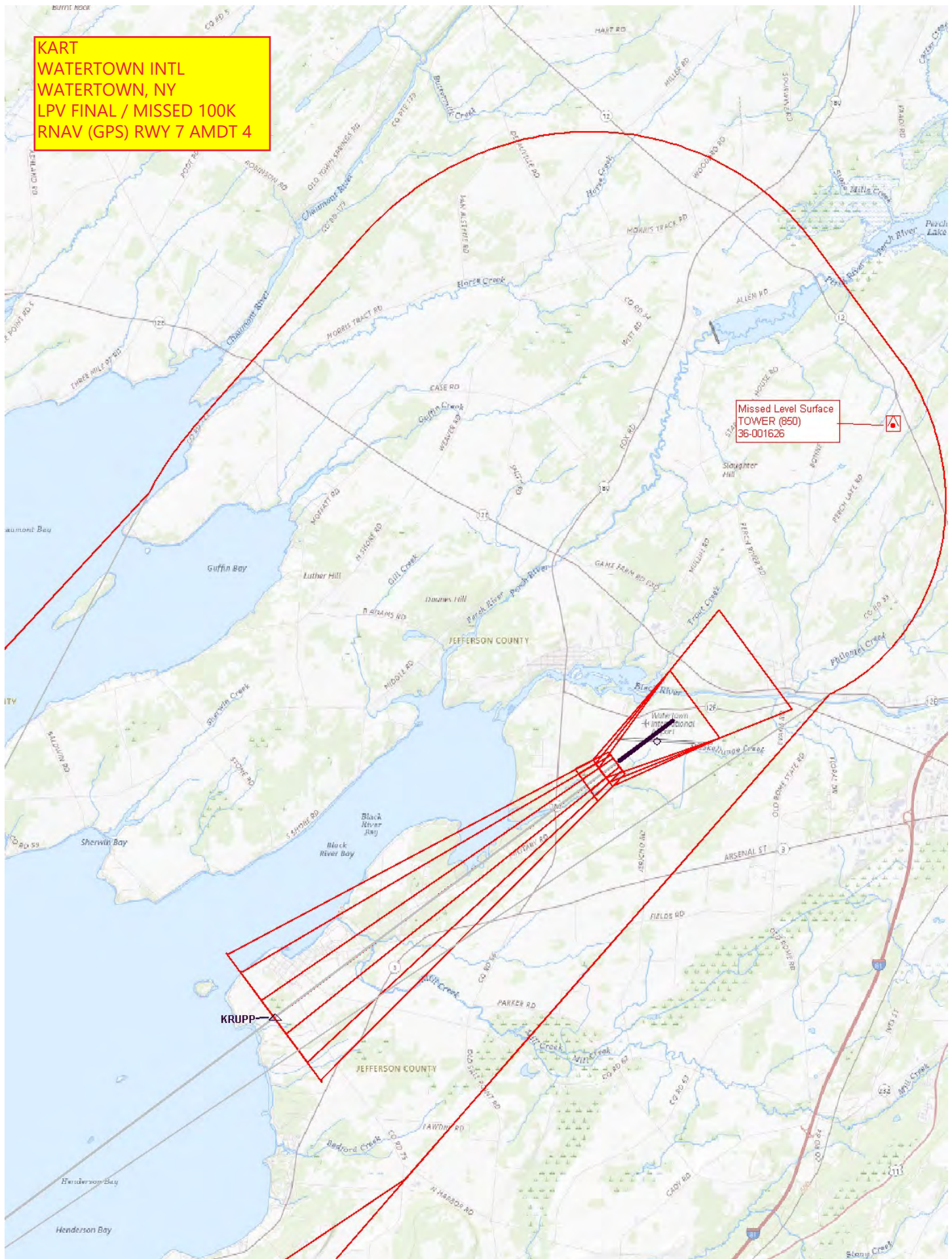
NOTE: Limited chart information provided outside of U.S. airspace. Refer to DoD (NGA) or foreign charts and flight information publications outside U.S. airspace.

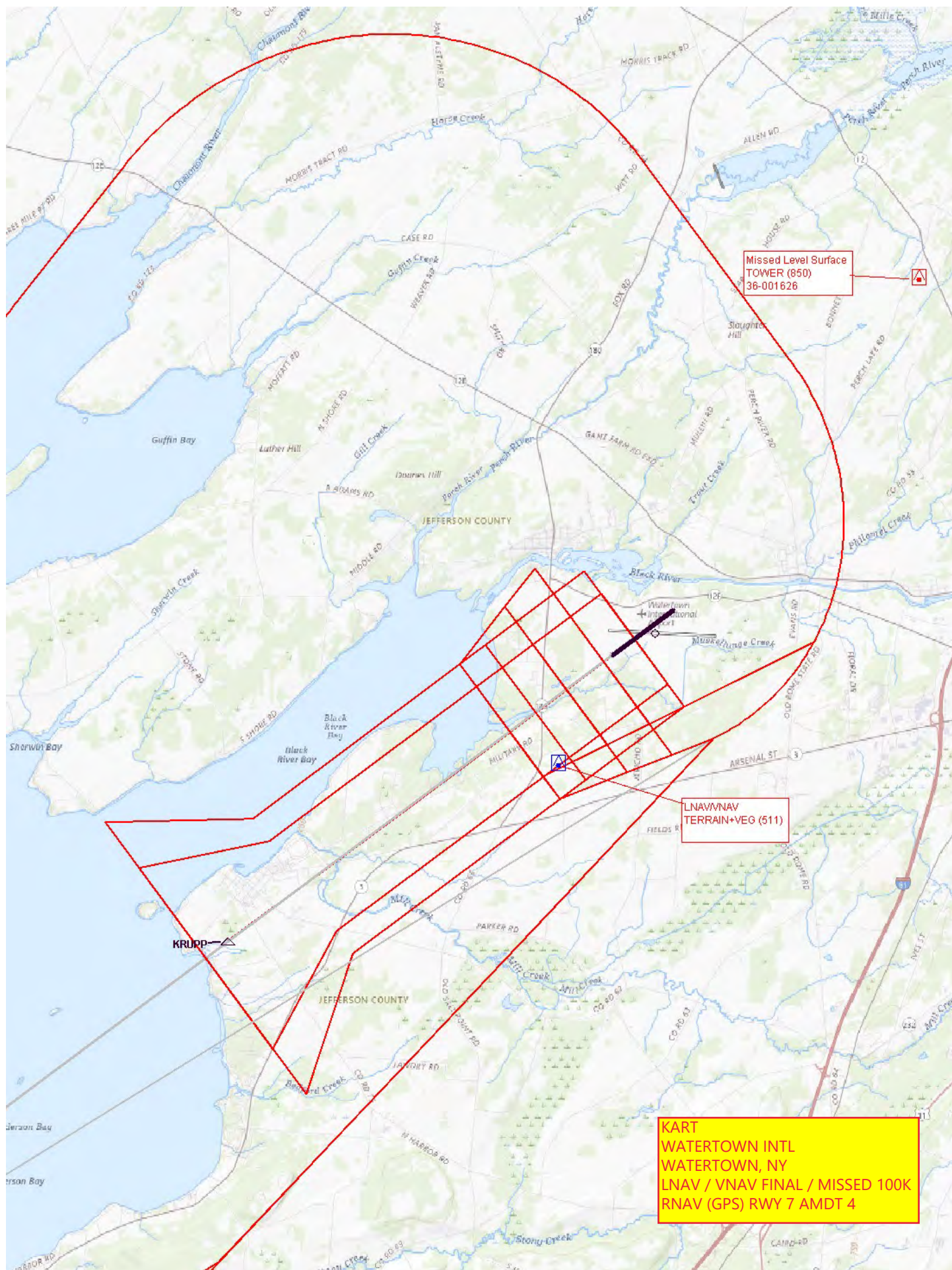
GTG-SYRACUSE APP WITHIN
20 NM ON 126.125, 269.125

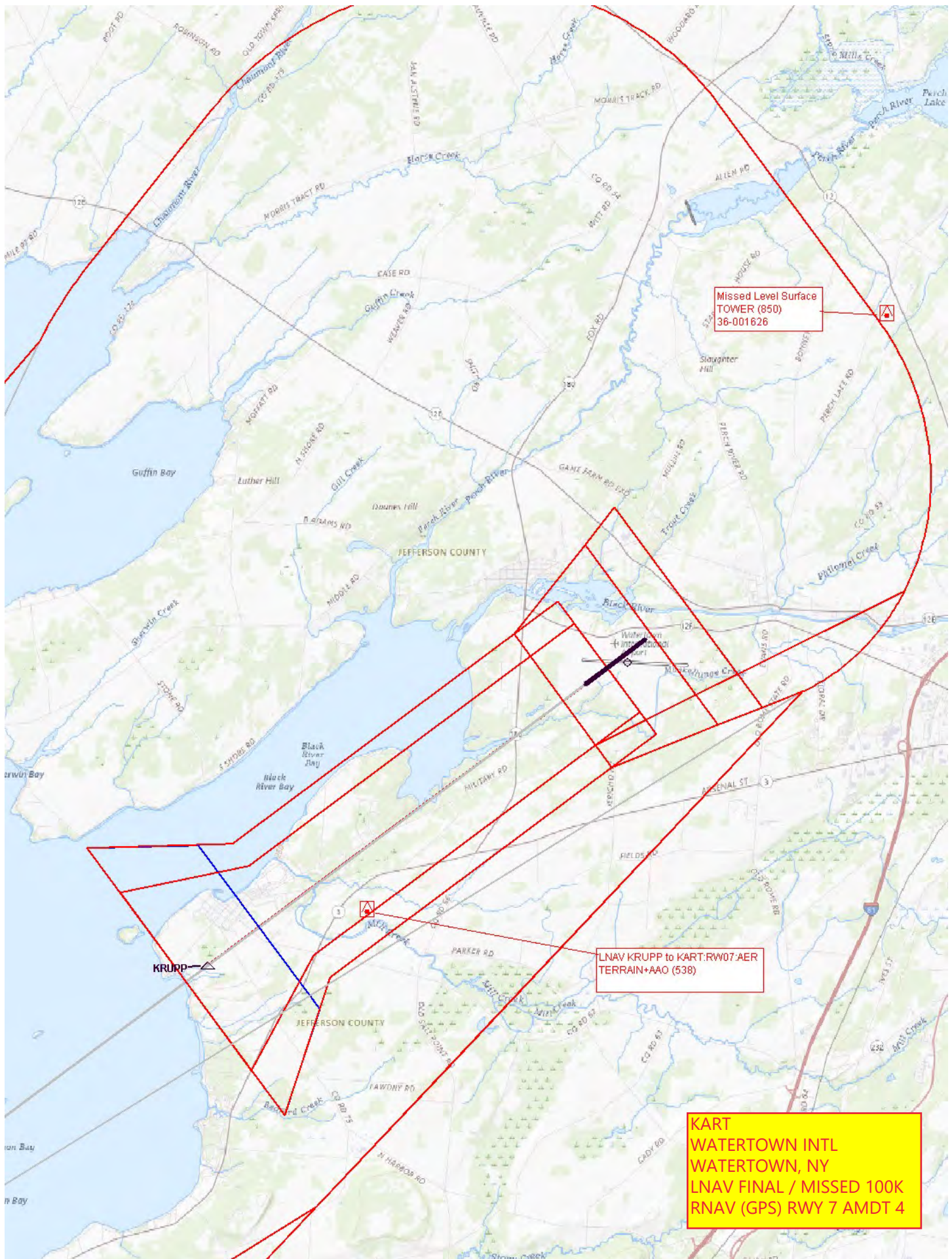
KART
WATERTOWN INTL
WATERTOWN, NY
LPV FINAL / MISSED 100K
RNAV (GPS) RWY 7 AMDT 4

Misled Level Surface
TOWER (850)
36-001626

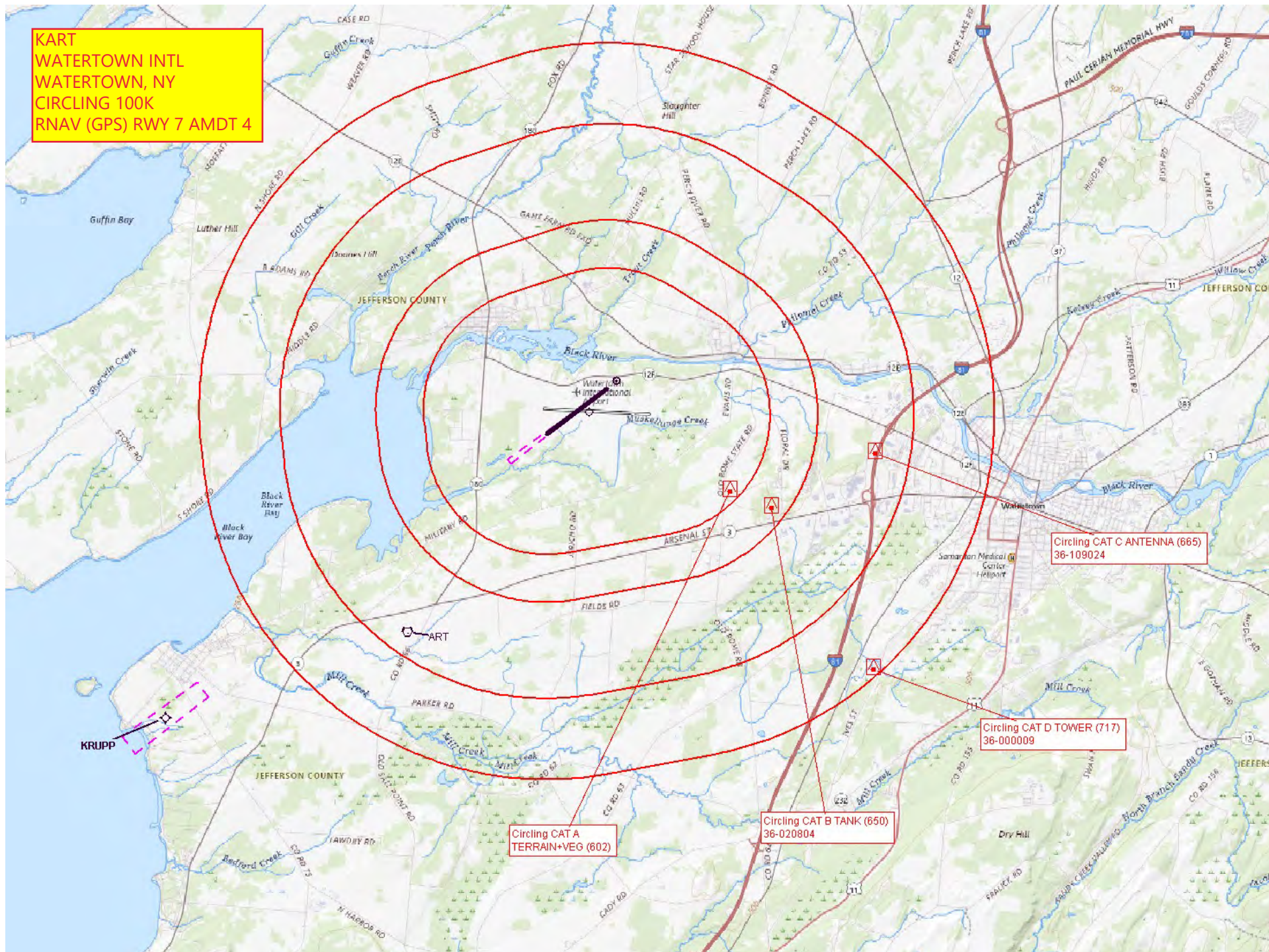
KRUPP







KART
WATERTOWN INTL
WATERTOWN, NY
CIRCLING 100K
RNAV (GPS) RWY 7 AMDT 4



KART
WATERTOWN INTL
WATERTOWN, NY
TAA SI 155 CW 335
RNAV (GPS) RWY 7 AMDT 4

NOTE: Limited chart information provided outside of U.S. airspace. Refer to DoD (NGA) or foreign charts and flight information publications outside U.S. airspace.

Magnetic disturbance of as much as 38° exists at ground level in this vicinity.

Magnetic disturbance of as much as 0° exists at lake level in this vicinity.

NOTE: Limited chart information provided outside of U.S. airspace. Refer to DoD (NGA) or foreign charts and flight information publications outside U.S. airspace.

Magnetic disturbance of as much as 6° exists at lake level in this vicinity.

TAA Straight-In 155 CW 335
Stepdown TERRAIN+AAO (1395)

TAA Straight-In 155 CW 335
WINDMILL (2565)
36-159861

TAA Straight-In 335 CW 155
TERRAIN+AAO (1375)

ETG-SYRACUSE APP WITHIN
20 NM ON 126 125 269/125





KART
WATERTOWN INTL
WATERTOWN, NY
TAA SI 355 CW 155
RNAV (GPS) RWY 7 AMDT 4

Magnetic disturbance of
as much as 38° exists at
lake level in this vicinity.

WATERTOWN
109.8 Ch 35 ART

WATERTOWN INTL (ART)
ASOS 132.325
331° L 70 123.00
AOE

NOTE: Limited chart information provided outside of
U.S. airspace. Refer to DoD (NGA) or foreign charts and
flight information publications outside U.S. airspace.

TAA Straight-In 335 CW 155
TERRAIN+AAO (1375)

Magnetic disturbance of
as much as 6° exists at
lake level in this vicinity.

CTC SYRACUSE APP WITHIN
120 NM ON 126.125, 269/125

ited chart information provided
D (NGA) or foreign charts and
outside U.S. airspace.