

DME DME Assessment Results for SEGUL1 path KSFO:RW01L:DER_YYUNG

Results Summary

Flyability:	Completed
DME/DME:	Completed - No Critical DMEs
Name:	Jeanette CTR Roller
Project File:	C:\Users\Jeanette CTR Roller\Desktop\20230215 Desktop_JT\KSFO KSJC SubPak 3-21-24\SubPak FPT\20230724 KSFO Master (email).tgs
Output File:	C:\Users\Jeanette CTR Roller\Desktop\20230215 Desktop_JT\KSFO KSJC SubPak 3-21-24\SubPak FPT\KSFO [IFPA] SEGUL1 20231010_1424 MDT\KSFO-RW01L-DER_YYUNG\KSFO SEGUL1 SID RW01L YYUNG 20231010_1424 MDT.pdf
Procedure Name:	SEGUL1
Software: DmeDmePlugin:	7.1.1
Date/Time:	10/10/2023 14:24 MDT
Databases:	DTED level 0 max

Failures

No Failures

Warnings

No Warnings

Informational

No Informational

Notes For Flight Check

None

Flight Plan

Name	Type	Lat/Lon	Altitude (ft)	VNAV Mode	Ground Speed (kts)	Turn Type	Leg Type
KSFO:RW01L:DER	WP	N37° 37' 35.33", W122° 22' 14.19"	9.2	VNAV	130	FLY_OVER	TF
SEPDY	WP	N37° 40' 55.43", W122° 21' 03.44"	1363.5	VNAV	200	FLY_OVER	TF
WAMMY	WP	N37° 32' 27.83", W122° 43' 26.60"	4207.9	VNAV	200	FLY_BY	TF
SEGUL	WP	N36° 57' 46.93", W122° 34' 19.67"	16000	VNAV	240	FLY_BY	TF
CYPRS	WP	N36° 25' 20.41", W122° 25' 55.85"	16000	VNAV	240	FLY_BY	TF
YYUNG	WP	N35° 30' 57.90", W121° 04' 07.27"	22000	VNAV	260	FLY_BY	TF
Climb Gradient: 500.0 ft/NM up to 513.0 ft MSL 353.0 ft/NM up to 2100.0 ft MSL 200.0 ft/NM							

Flyability

Flight Type:	SID
Selected Airport:	KSFO [IFPA]
Climb Gradient:	500.0 ft/NM up to 513.0 ft MSL 353.0 ft/NM up to 2100.0 ft MSL 200.0 ft/NM
Speeds:	130 at the Runway DER
	145 at the end of the VA or VI leg
	200 Ground Speed to 11000 FT
	240 Ground Speed to 18000 FT
	260 Ground Speed to 24000 FT
	340 Ground Speed above 24000 FT
Descent During a Turn:	Allowed
VNAV Mode:	Flight Plan

DME DME Assessment Results for SEGUL1 path KSFO:RW01L:DER_YYUNG

DME/DME	
RNP:	RNP 2
Flight Mode:	Manual
Line of Sight (DTED Level 0 Max):	Evaluated
Inertial Drift:	Enabled
Initial Drift:	0.558 NM
INS Drift Rate:	8.0 NM/Hour
Range Mode:	OSV
RNP Edges:	Evaluated
Min DME Range:	3.0 NM
DME Types:	DME, VOR-DME, VORTAC
DME Include Angles:	30 to 150
Critical DMEs:	Allowed
DoD Facilities:	Not included
Foreign Facilities:	Not included
High DMEs:	Included
Low DMEs:	Included
Terminal DMEs:	Included
Flight Check DMEs:	Not selected
Higher Altitudes:	Not Evaluated
Near Maximum Altitude:	Not Evaluated
Automatic ESVs:	Not enabled
Disabled DMEs:	None

DME/DME (Continued)										
DMEs Used										
#	Name	Lat/Lon	MAGVAR	Range	Type	Source	Critical	Status	Time	Distance
1	LIN	N38° 04' 28.49", W121° 00' 13.89"	17.0 E	130	DH	IFPA	NO	Enabled	7 %	7.5 %
2	SWR	N39° 10' 49.16", W120° 16' 10.60"	16.0 E	130	DH	IFPA	NO	Enabled	21.4 %	19.1 %
3	SFO	N37° 37' 10.15", W122° 22' 26.02"	17.0 E	40	L	IFPA	NO	Enabled	17.3 %	15.5 %
4	EHF	N35° 29' 04.40", W119° 05' 50.26"	14.0 E	130	H	IFPA	NO	Enabled	20 %	21.4 %
5	OAK	N37° 43' 33.33", W122° 13' 24.93"	17.0 E	130	DH	IFPA	NO	Enabled	87.7 %	87.8 %
6	SAU	N37° 51' 19.20", W122° 31' 21.91"	17.0 E	40	L	IFPA	NO	Enabled	24.8 %	22.1 %
7	BSR	N36° 10' 52.66", W121° 38' 31.60"	16.0 E	40	L	IFPA	NO	Enabled	38.1 %	40.8 %
8	MOD	N37° 37' 38.55", W120° 57' 28.33"	17.0 E	130	DH	IFPA	NO	Enabled	67.3 %	71.3 %
9	OSI	N37° 23' 33.65", W122° 16' 54.63"	17.0 E	40	L	IFPA	NO	Enabled	11 %	10.9 %
10	AVE	N35° 38' 49.11", W119° 58' 42.98"	16.0 E	130	DH	IFPA	NO	Enabled	30.3 %	32.5 %
11	SGD	N38° 10' 45.70", W122° 22' 23.35"	17.0 E	40	L	IFPA	NO	Enabled	8.3 %	7.4 %
12	SJC	N37° 22' 28.96", W121° 56' 40.81"	16.0 E	40	L	IFPA	NO	Enabled	25.8 %	23 %
13	STS	N38° 30' 29.47", W122° 48' 38.22"	0.0 E	130	DH	IFPA	NO	Enabled	44.2 %	42.8 %
14	PYE	N38° 04' 47.12", W122° 52' 04.18"	17.0 E	130	DH	IFPA	NO	Enabled	64.1 %	63.4 %
15	SNS	N36° 39' 49.81", W121° 36' 11.46"	17.0 E	130	H	IFPA	NO	Enabled	56.8 %	60.5 %

DME DME Assessment Results for SEGUL1 path KSFO:RW01L:DER_YYUNG

Flight Check DME Selection						
Distance [NM]	Selected DMEs					Alternate
0.0						
3.3	OAK	SGD	SWR			
3.4	SJC	OAK	SGD	SWR		
3.5	OAK	SAU	SGD	SJC	SWR	
16.5	OAK	PYE	SJC	SAU	STS	SWR
17.8	OAK	PYE	SJC	SAU	SWR	
21.6	OAK	PYE	STS	SAU	SWR	
37.2	SJC	PYE	STS	SAU	OAK	SFO
42.8	SJC	PYE	STS	SFO	OAK	
51.8	PYE	MOD	STS	OSI	SFO	OAK
55.9	OAK	SNS	OSI	PYE	MOD	STS
69.0	OAK	SNS	PYE	STS	MOD	
92.8	OAK	SNS	PYE	MOD		
94.2	OAK	BSR	SNS	PYE	MOD	
123.7	OAK	BSR	SNS	MOD		
123.9	AVE	SNS	OAK	BSR	MOD	
138.2	BSR	AVE	MOD	OAK		
139.4	BSR	AVE	MOD	EHF	OAK	
159.1	AVE	SNS	BSR	MOD	EHF	
166.7	AVE	SNS	EHF	MOD		
177.5	AVE	SNS	EHF			

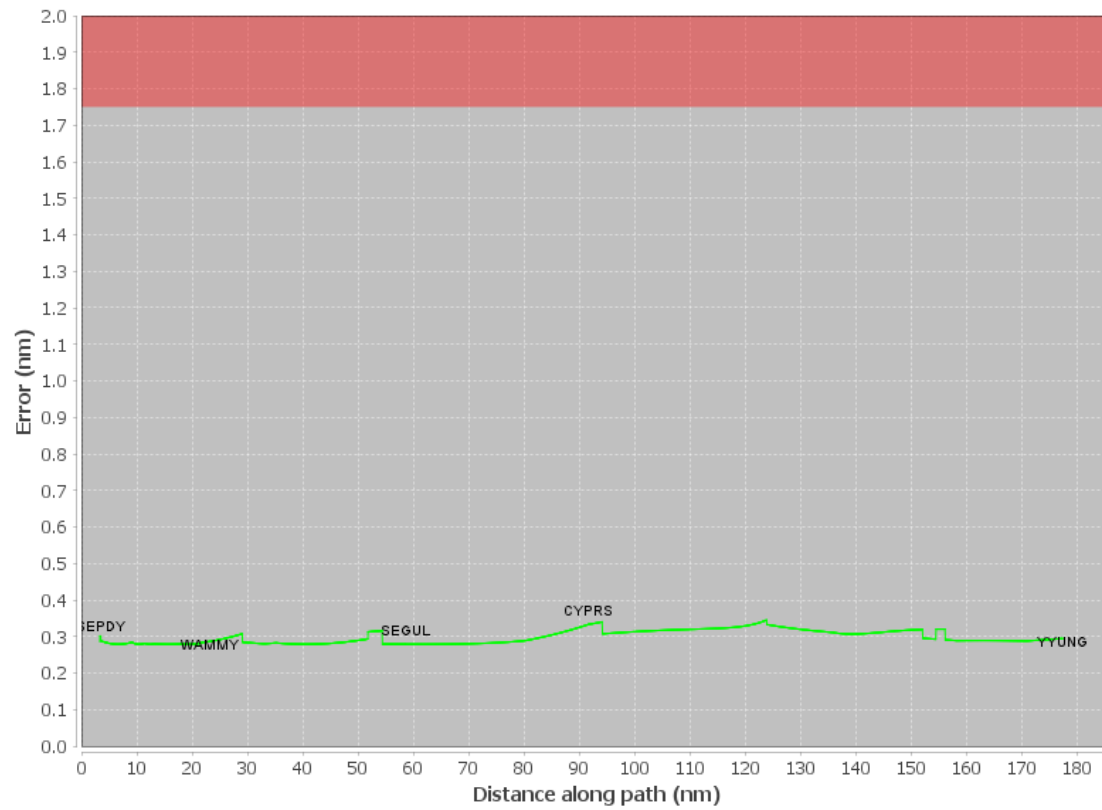
Inertial Drift Segments			
#	Start Location	End Location	Length [NM]
1	N37° 37' 37.24", W122° 22' 12.93"	N37° 40' 45.97", W122° 21' 05.71"	3.2957

Available DMEs by Waypoints			
Waypoint Before	Waypoint After	DME List	Suggested DMEs
KSFO:RW01L:DER	SEPDY	SGD, OAK, SJC, SWR	
SEPDY	WAMMY	SGD, STS, SAU, OAK, SJC, SFO, PYE, SWR	
WAMMY	SEGUL	STS, MOD, OSI, SAU, OAK, SNS, PYE, SJC, SFO, SWR	
SEGUL	CYPRS	MOD, STS, OSI, OAK, SNS, PYE	
CYPRS	YYUNG	BSR, AVE, LIN, EHF, MOD, STS, OAK, SNS, PYE	

User Data Files								
#	File Name							
1	ALWYS ESV.udt							
User DMEs								
#	Name	Lat/Lon	MAGVAR	Range	Elevation [ft]	Frequency	Replaces	Status
None								

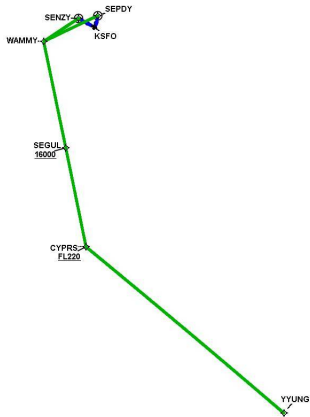
DME DME Assessment Results for SEGUL1 path KSFO:RW01L:DER_YUNG

DME Error



DME DME Assessment Results for SEGUL1 path KSFO:RW01L:DER_YYUNG

Graphic Depiction 1



DME DME Assessment Results for SEGUL1 path KSFO:RW01R:DER_SEPDY

Results Summary

Flyability:	Completed
DME/DME:	Completed - No Critical DMEs
Name:	Jeanette CTR Roller
Project File:	C:\Users\Jeanette CTR Roller\Desktop\20230215 Desktop_JT\KSFO KSJC SubPak 3-21-24\SubPak FPT\20230724 KSFO Master (email).tgs
Output File:	C:\Users\Jeanette CTR Roller\Desktop\20230215 Desktop_JT\KSFO KSJC SubPak 3-21-24\SubPak FPT\KSFO [IFPA] SEGUL1 20231010_1424 MDT\KSFO-RW01R-DER_SEPDY\KSFO SEGUL1 SID RW01R SEPDY 20231010_1424 MDT.pdf
Procedure Name:	SEGUL1
Software: DmeDmePlugin:	7.1.1
Date/Time:	10/10/2023 14:24 MDT
Databases:	DTED level 0 max

Failures

No Failures

Warnings

No Warnings

Informational

No Informational

Notes For Flight Check

None

Flight Plan

Name	Type	Lat/Lon	Altitude (ft)	VNAV Mode	Ground Speed (kts)	Turn Type	Leg Type
KSFO:RW01R:DER	WP	N37° 37' 38.43", W122° 22' 01.60"	10.5	VNAV	130	FLY_OVER	TF
SEPDY	WP	N37° 40' 55.43", W122° 21' 03.44"	1363.5	VNAV	200	FLY_OVER	TF
Climb Gradient: 500.0 ft/NM up to 513.0 ft MSL 353.0 ft/NM up to 2100.0 ft MSL 200.0 ft/NM							

Flyability

Flight Type:	SID
Selected Airport:	KSFO [IFPA]
Climb Gradient:	500.0 ft/NM up to 513.0 ft MSL 353.0 ft/NM up to 2100.0 ft MSL 200.0 ft/NM
Speeds:	130 at the Runway DER
	145 at the end of the VA or VI leg
	200 Ground Speed to 11000 FT
	240 Ground Speed to 18000 FT
	260 Ground Speed to 24000 FT
	340 Ground Speed above 24000 FT
Descent During a Turn:	Allowed
VNAV Mode:	Flight Plan

DME DME Assessment Results for SEGUL1 path KSFO:RW01R:DER_SEPDY

DME/DME	
RNP:	RNP 2
Flight Mode:	Manual
Line of Sight (DTED Level 0 Max):	Evaluated
Inertial Drift:	Enabled
Initial Drift:	0.558 NM
INS Drift Rate:	8.0 NM/Hour
Range Mode:	OSV
RNP Edges:	Evaluated
Min DME Range:	3.0 NM
DME Types:	DME, VOR-DME, VORTAC
DME Include Angles:	30 to 150
Critical DMEs:	Allowed
DoD Facilities:	Not included
Foreign Facilities:	Not included
High DMEs:	Included
Low DMEs:	Included
Terminal DMEs:	Included
Flight Check DMEs:	Not selected
Higher Altitudes:	Not Evaluated
Near Maximum Altitude:	Not Evaluated
Automatic ESVs:	Not enabled
Disabled DMEs:	None

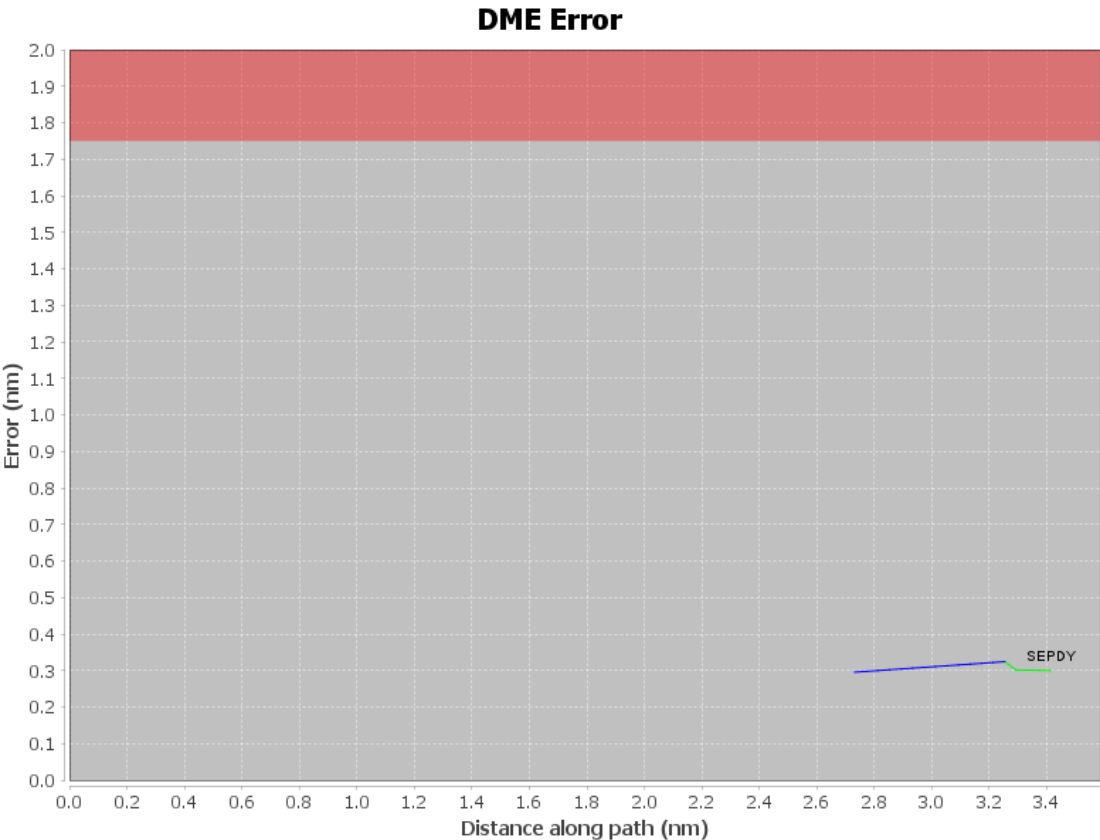
DME/DME (Continued)										
DMEs Used										
#	Name	Lat/Lon	MAGVAR	Range	Type	Source	Critical	Status	Time	Distance
1	SWR	N39° 10' 49.16", W120° 16' 10.60"	16.0 E	130	DH	IFPA	NO	Enabled	2.8 %	3.5 %
2	OAK	N37° 43' 33.33", W122° 13' 24.93"	17.0 E	130	DH	IFPA	NO	Enabled	2.8 %	3.5 %
3	SJC	N37° 22' 28.96", W121° 56' 40.81"	16.0 E	40	L	IFPA	NO	Enabled	2.8 %	3.5 %
4	SGD	N38° 10' 45.70", W122° 22' 23.35"	17.0 E	40	L	IFPA	NO	Enabled	2.8 %	3.5 %

Flight Check DME Selection						
Distance [NM]	Selected DMEs					Alternate
0.0						
2.7	SJC	SWR				
2.8						
3.3	SJC	OAK	SGD	SWR		

Inertial Drift Segments			
#	Start Location	End Location	Length [NM]
1	N37° 37' 40.34", W122° 22' 00.33"	N37° 40' 14.74", W122° 21' 09.89"	2.6962
2	N37° 40' 17.14", W122° 21' 09.51"	N37° 40' 48.25", W122° 21' 04.58"	0.522

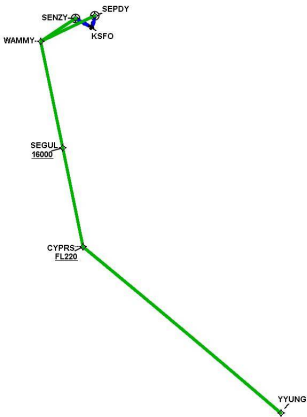
Available DMEs by Waypoints			
Waypoint Before	Waypoint After	DME List	Suggested DMEs
KSFO:RW01R:DER	SEPDY	SGD, OAK, SJC, SWR	

User Data Files								
#	File Name							
1	ALWYS ESV.udt							
User DMEs								
#	Name	Lat/Lon	MAGVAR	Range	Elevation [ft]	Frequency	Replaces	Status
None								



DME DME Assessment Results for SEGUL1 path KSFO:RW01R:DER_SEPDY

Graphic Depiction 1



DME DME Assessment Results for SEGUL1 path KSFO:RW28L:DER_WAMMY

Results Summary

Flyability:	Completed
DME/DME:	Completed - No Critical DMEs
Name:	Jeanette CTR Roller
Project File:	C:\Users\Jeanette CTR Roller\Desktop\20230215 Desktop_JT\KSFO KSJC SubPak 3-21-24\SubPak FPT\20230724 KSFO Master (email).tgs
Output File:	C:\Users\Jeanette CTR Roller\Desktop\20230215 Desktop_JT\KSFO KSJC SubPak 3-21-24\SubPak FPT\KSFO [IFPA] SEGUL1 20231010_1424 MDT\KSFO-RW28L- DER_WAMMY\KSFO SEGUL1 SID RW28L WAMMY 20231010_1424 MDT.pdf
Procedure Name:	SEGUL1
Software: DmeDmePlugin:	7.1.1
Date/Time:	10/10/2023 14:24 MDT
Databases:	DTED level 0 max

Failures

No Failures

Warnings

No Warnings

Informational

No Informational

Notes For Flight Check

None

Flight Plan

Name	Type	Lat/Lon	Altitude (ft)	VNAV Mode	Ground Speed (kts)	Turn Type	Leg Type
KSFO:RW28L:DER	WP	N37° 37' 34.65", W122° 23' 35.18"	7.1	VNAV	130	FLY_OVER	TF
SENZY	WP	N37° 39' 59.40", W122° 29' 06.60"	1478.5	VNAV	200	FLY_OVER	TF
WAMMY	WP	N37° 32' 27.83", W122° 43' 26.60"	4207.9	VNAV	200	FLY_BY	TF
Climb Gradient: 353.0 ft/NM up to 1200.0 ft MSL 200.0 ft/NM							

Flyability

Flight Type:	SID
Selected Airport:	KSFO [IFPA]
Climb Gradient:	353.0 ft/NM up to 1200.0 ft MSL 200.0 ft/NM
Speeds:	130 at the Runway DER
	145 at the end of the VA or VI leg
	200 Ground Speed to 11000 FT
	240 Ground Speed to 18000 FT
	260 Ground Speed to 24000 FT
	340 Ground Speed above 24000 FT
Descent During a Turn:	Allowed
VNAV Mode:	Flight Plan

DME DME Assessment Results for SEGUL1 path KSFO:RW28L:DER_WAMMY

DME/DME	
RNP:	RNP 2
Flight Mode:	Manual
Line of Sight (DTED Level 0 Max):	Evaluated
Inertial Drift:	Enabled
Initial Drift:	0.558 NM
INS Drift Rate:	8.0 NM/Hour
Range Mode:	OSV
RNP Edges:	Evaluated
Min DME Range:	3.0 NM
DME Types:	DME, VOR-DME, VORTAC
DME Include Angles:	30 to 150
Critical DMEs:	Allowed
DoD Facilities:	Not included
Foreign Facilities:	Not included
High DMEs:	Included
Low DMEs:	Included
Terminal DMEs:	Included
Flight Check DMEs:	Not selected
Higher Altitudes:	Not Evaluated
Near Maximum Altitude:	Not Evaluated
Automatic ESVs:	Not enabled
Disabled DMEs:	None

DME/DME (Continued)										
DMEs Used										
#	Name	Lat/Lon	MAGVAR	Range	Type	Source	Critical	Status	Time	Distance
1	SWR	N39° 10' 49.16", W120° 16' 10.60"	16.0 E	130	DH	IFPA	NO	Enabled	72.6 %	76.7 %
2	SFO	N37° 37' 10.15", W122° 22' 26.02"	17.0 E	40	L	IFPA	NO	Enabled	18.9 %	19.9 %
3	OAK	N37° 43' 33.33", W122° 13' 24.93"	17.0 E	130	DH	IFPA	NO	Enabled	70.9 %	74.9 %
4	SGD	N38° 10' 45.70", W122° 22' 23.35"	17.0 E	40	L	IFPA	NO	Enabled	43.6 %	46 %
5	SAU	N37° 51' 19.20", W122° 31' 21.91"	17.0 E	40	L	IFPA	NO	Enabled	65.9 %	69.6 %
6	SJC	N37° 22' 28.96", W121° 56' 40.81"	16.0 E	40	L	IFPA	NO	Enabled	56 %	59.2 %
7	STS	N38° 30' 29.47", W122° 48' 38.22"	0.0 E	130	DH	IFPA	NO	Enabled	13.2 %	14 %
8	PYE	N38° 04' 47.12", W122° 52' 04.18"	17.0 E	130	DH	IFPA	NO	Enabled	38.6 %	40.7 %

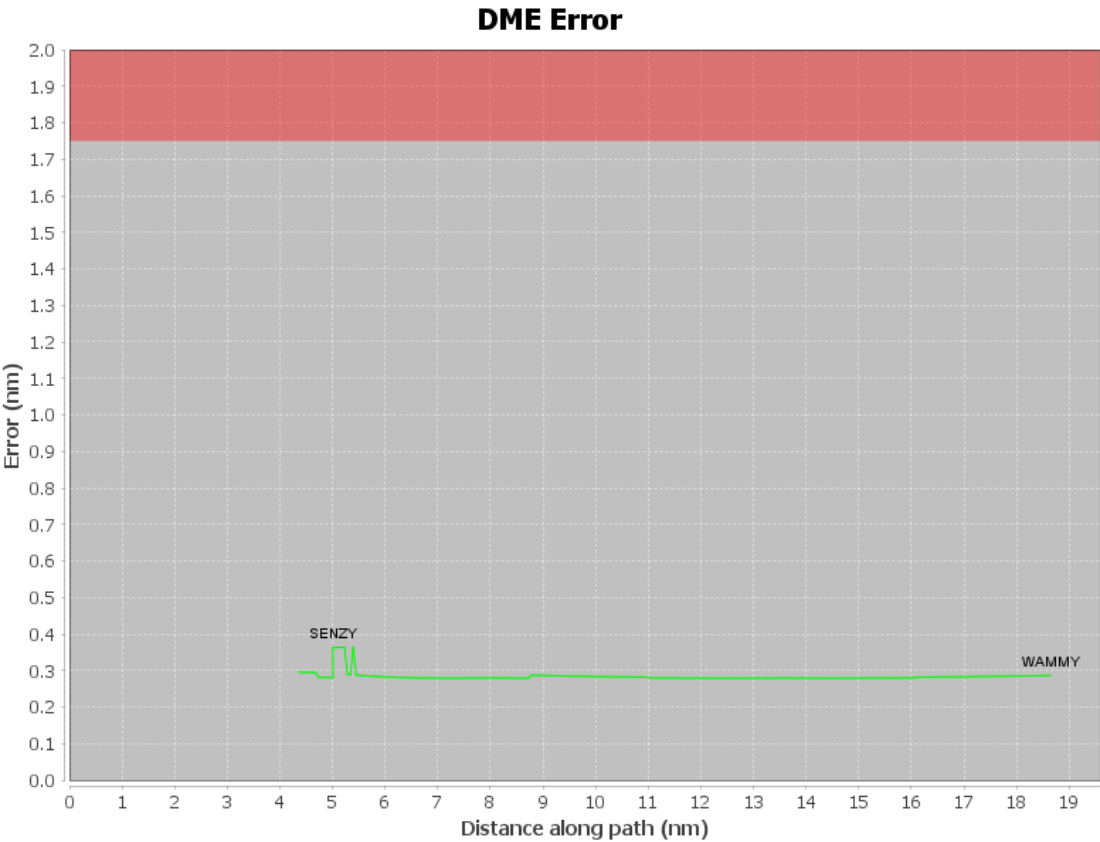
Flight Check DME Selection						
Distance [NM]	Selected DMEs					Alternate
0.0						
4.4	SWR	SGD				
4.7	OAK	SGD	SWR			
4.7	OAK	SAU	SGD	SWR		
5.1	SJC	OAK	SWR	SFO		
5.3	SFO	SGD	SJC	OAK	SWR	
5.4	SJC	OAK	SWR	SFO		
5.4	SFO	SGD	SJC	OAK	SWR	
8.8	SJC	SGD	SAU	OAK	SWR	
13.4	OAK	PYE	SJC	SAU	SWR	
16.1	OAK	PYE	STS	SAU	SWR	
17.2	OAK	PYE	SAU	SWR		
17.3	OAK	PYE	STS	SAU	SWR	

DME DME Assessment Results for SEGUL1 path KSFO:RW28L:DER_WAMMY

Inertial Drift Segments			
#	Start Location	End Location	Length [NM]
1	N37° 37' 35.65", W122° 23' 37.57"	N37° 39' 40.36", W122° 28' 23.68"	4.3127

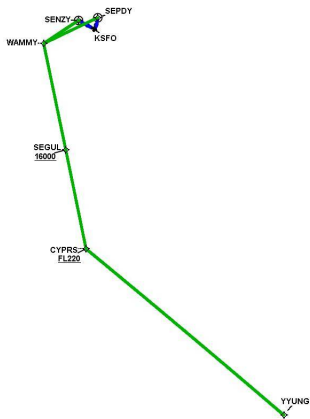
Available DMEs by Waypoints			
Waypoint Before	Waypoint After	DME List	Suggested DMEs
KSFO:RW28L:DER	SENZY	SGD, SAU, OAK, SWR	
SENZY	WAMMY	SGD, STS, SAU, OAK, SJC, SFO, PYE, SWR	

User Data Files								
#	File Name							
1	ALWYS ESV.udt							
User DMEs								
#	Name	Lat/Lon	MAGVAR	Range	Elevation [ft]	Frequency	Replaces	Status
None								



DME DME Assessment Results for SEGUL1 path KSFO:RW28L:DER_WAMMY

Graphic Depiction 1



DME DME Assessment Results for SEGUL1 path KSFO:RW28R:DER_SENZY

Results Summary

Flyability:	Completed
DME/DME:	Completed - No Critical DMEs
Name:	Jeanette CTR Roller
Project File:	C:\Users\Jeanette CTR Roller\Desktop\20230215 Desktop_JT\KSFO KSJC SubPak 3-21-24\SubPak FPT\20230724 KSFO Master (email).tgs
Output File:	C:\Users\Jeanette CTR Roller\Desktop\20230215 Desktop_JT\KSFO KSJC SubPak 3-21-24\SubPak FPT\KSFO [IFPA] SEGUL1 20231010_1424 MDT\KSFO-RW28R- DER_SENZY\KSFO SEGUL1 SID RW28R SENZY 20231010_1424 MDT.pdf
Procedure Name:	SEGUL1
Software: DmeDmePlugin:	7.1.1
Date/Time:	10/10/2023 14:24 MDT
Databases:	DTED level 0 max

Failures

No Failures

Warnings

No Warnings

Informational

No Informational

Notes For Flight Check

None

Flight Plan

Name	Type	Lat/Lon	Altitude (ft)	VNAV Mode	Ground Speed (kts)	Turn Type	Leg Type
KSFO:RW28R:DER	WP	N37° 37' 43.46", W122° 23' 36.21"	5.5	VNAV	130	FLY_OVER	TF
SENZY	WP	N37° 39' 59.40", W122° 29' 06.60"	1478.5	VNAV	200	FLY_OVER	TF
Climb Gradient: 361.0 ft/NM up to 1100.0 ft MSL 200.0 ft/NM							

Flyability

Flight Type:	SID
Selected Airport:	KSFO [IFPA]
Climb Gradient:	361.0 ft/NM up to 1100.0 ft MSL 200.0 ft/NM
Speeds:	130 at the Runway DER
	145 at the end of the VA or VI leg
	200 Ground Speed to 11000 FT
	240 Ground Speed to 18000 FT
	260 Ground Speed to 24000 FT
	340 Ground Speed above 24000 FT
Descent During a Turn:	Allowed
VNAV Mode:	Flight Plan

DME DME Assessment Results for SEGUL1 path KSFO:RW28R:DER_SENZY

DME/DME	
RNP:	RNP 2
Flight Mode:	Manual
Line of Sight (DTED Level 0 Max):	Evaluated
Inertial Drift:	Enabled
Initial Drift:	0.558 NM
INS Drift Rate:	8.0 NM/Hour
Range Mode:	OSV
RNP Edges:	Evaluated
Min DME Range:	3.0 NM
DME Types:	DME, VOR-DME, VORTAC
DME Include Angles:	30 to 150
Critical DMEs:	Allowed
DoD Facilities:	Not included
Foreign Facilities:	Not included
High DMEs:	Included
Low DMEs:	Included
Terminal DMEs:	Included
Flight Check DMEs:	Not selected
Higher Altitudes:	Not Evaluated
Near Maximum Altitude:	Not Evaluated
Automatic ESVs:	Not enabled
Disabled DMEs:	None

DME/DME (Continued)										
DMEs Used										
#	Name	Lat/Lon	MAGVAR	Range	Type	Source	Critical	Status	Time	Distance
1	SWR	N39° 10' 49.16", W120° 16' 10.60"	16.0 E	130	DH	IFPA	NO	Enabled	10.1 %	12.1 %
2	OAK	N37° 43' 33.33", W122° 13' 24.93"	17.0 E	130	DH	IFPA	NO	Enabled	4.6 %	5.5 %
3	SGD	N38° 10' 45.70", W122° 22' 23.35"	17.0 E	40	L	IFPA	NO	Enabled	10.1 %	12.1 %
4	SAU	N37° 51' 19.20", W122° 31' 21.91"	17.0 E	40	L	IFPA	NO	Enabled	4.6 %	5.5 %

Flight Check DME Selection						
Distance [NM]	Selected DMEs					Alternate
0.0						
4.3	SWR	SGD				
4.7	OAK	SAU	SGD	SWR		

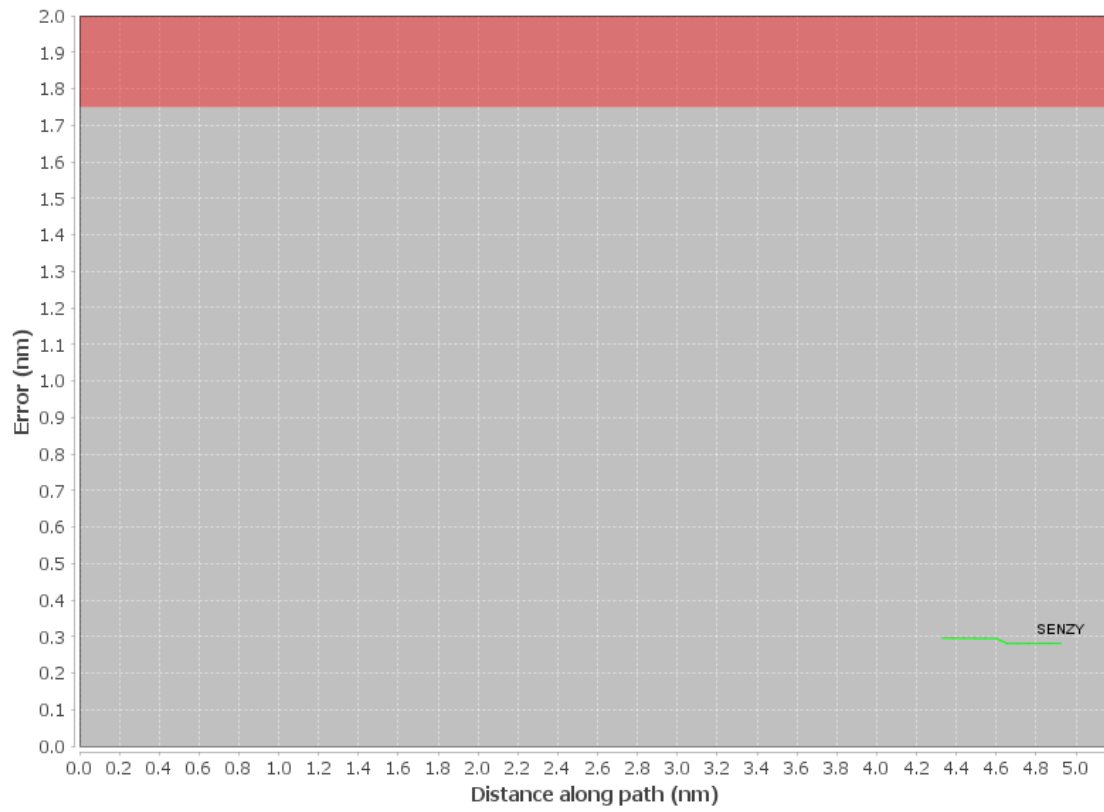
Inertial Drift Segments			
#	Start Location	End Location	Length [NM]
1	N37° 37' 44.47", W122° 23' 38.62"	N37° 39' 43.08", W122° 28' 26.62"	4.2873

Available DMEs by Waypoints			
Waypoint Before	Waypoint After	DME List	Suggested DMEs
KSFO:RW28R:DER	SENZY	SGD, SAU, OAK, SWR	

User Data Files								
#	File Name							
1	ALWYS ESV.udt							
User DMEs								
#	Name	Lat/Lon	MAGVAR	Range	Elevation [ft]	Frequency	Replaces	Status
None								

DME DME Assessment Results for SEGUL1 path KSFO:RW28R:DER_SENZY

DME Error



DME DME Assessment Results for SEGUL1 path KSFO:RW28R:DER_SENZY

Graphic Depiction 1

