

Flight Procedures Cover Page	Task Action: P-NOTAM	Task Type: IAP	Estimated Chart Date: 07/15/2021	APWS Task ID: AB20A4EB3CFC4AD0B4F144D30F6F4094	APWS Project ID: 458EF5409484485F8FDA6688C0DAB65F
Procedure: RNAV (GPS) RWY 23 AMDT 1B		Enroute: NO	Specialist: Mccarthy, Christopher		Agreement Number:
Airport ID: KGVL			Airport City: GAINESVILLE		State: GA
Facility ID:	Facility Type:	Flight Inspection Remark Type:			
<p>Procedure Comments: P-NOTAM</p> <p>ORDER 8260.3, CHAPTER 2, NEW CIRCLING CRITERIA APPLIED.</p> <p>CONTROLLING OBSTACLES: CAT A WATER TOWER (13-112997) 341644.71N/0835010.44W 1476 (1A) CAT B TOWER (13-000315) 341700.00N/0834727.00W 1560 (5E) CAT C TOWER (13-000076) 341900.69N/0834945.63W 1698 (1A) CAT D TOWER (13-001695) 341902.08N/0834618.88W 1701 (1A)</p> <p>JASON KRETSCHMER, 405-954-4019</p> <p style="text-align: center;"><i>Digitally signed by</i> JASON KRETSCHMER Apr 16, 2021</p>					

QUALITY
24
CHECKED

QUALITY
41
CHECKED

WAAS
CH **77605**
W23A

APP CRS
224°

Rwy Idg
TDZE **1274**
Apt Elev **1277**

RNAV (GPS) RWY 23

LEE GILMER MEMORIAL (GVL)

RNP APCH.
LNAV/VNAV NA when using Jefferson altimeter setting. Rwy 23 helicopter visibility reduction below ¼ SM NA. For uncompensated Baro-VNAV systems, LNAV/VNAV NA below -17°C or above 46°C. When local altimeter setting not received, use Jefferson altimeter setting: increase all DA/MDA 80 feet; increase LPV all Cats visibility ¼ SM, and increase LNAV Cats C/D visibility and Circling Cats C/D visibility ¼ SM. Circling Rwy 11, 29 NA at night.

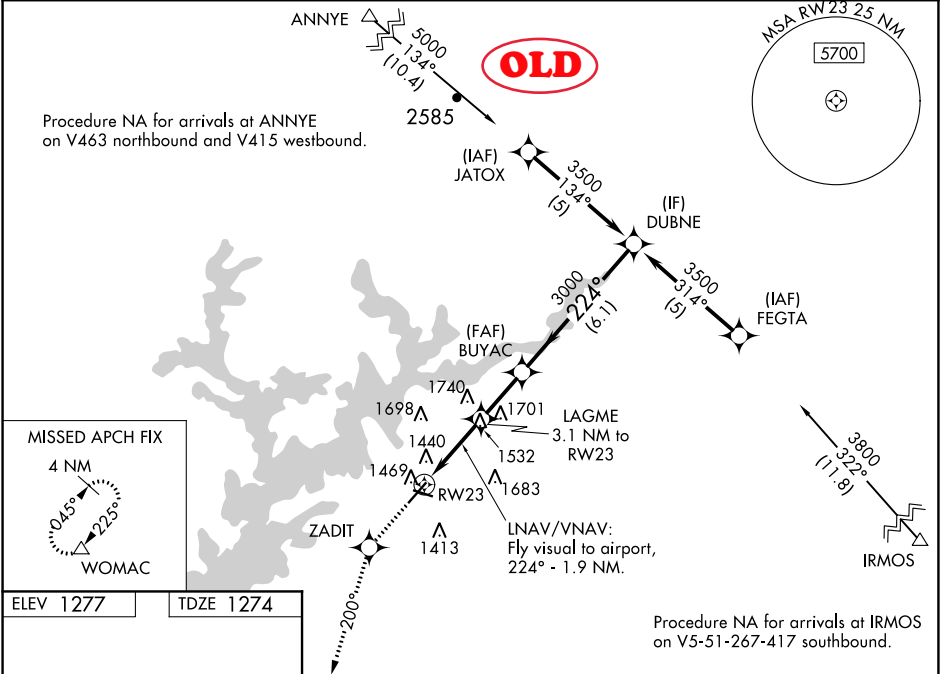
MISSED APPROACH: Climb to 4000 direct ZADIT and on 200° track to WOMAC and hold, continue climb-in-hold to 4000.

ASOS
126.475

ATLANTA APP CON★
132.475 291.1

GCO
121.725

UNICOM
123.075 (CTAF) 0



224° to RW23

5.496 x 100'

4003 x 100'

0.3% UP

HIRL Rwy 5-23

4000 ↑	ZADIT ✦	tr 200°	WOMAC △	VGSI and RNAV glidepath not coincident (VGSI Angle 3.00/TCH 38). DUBNE			
*LNAV only. LNAV/VNAV: Fly visual to airport, 224° - 1.9 NM. RW23				LAGME 3.1 NM to RW23	BUYAC	3500	Procedure Turn NA GP 3.00° TCH 40
				2220*	224°	3000	
				3.1 NM	2.2 NM	6.1 NM	
CATEGORY	A		B	C	D		
LPV DA	1722-1¾ 448 (500-1¾)						
LNAV/VNAV DA	1884-2 610 (700-2)						
LNAV MDA	1840-1	566 (600-1)	1840-1½ 566 (600-1½)		1840-1¾ 566 (600-1¾)		
CIRCLING	1880-1	603 (700-1)	1880-1¾ 603 (700-1¾)		2060-2½ 783 (800-2½)		

