

Flight Procedures Cover Page	Task Action: FLIGHT CHECK	Task Type: IAP	Estimated Chart Date: 11/05/2020	APWS Task ID: AAFDBF155E7F456DA8D3B49F9014E1AE	APWS Project ID: 5288F3F51128447288BBCBF17B8B0D19
Procedure: RNAV (GPS) RWY 14 AMDT 2A		Enroute: NO	Specialist: Cornell, Thor		Agreement Number:
Airport ID: KGPT	Airport Name: GULFPORT-BILOXI INTL		Airport City: GULFPORT		State: MS
Facility ID:	Facility Type:	Flight Inspection Remark Type: New FC Slot			

**Procedure Comments:**

RWY 14 VGSI NOW NON-COINCIDENT WITH RWY 14 STRAIGHT-IN IAPS.  
CRC REMAINDER CHANGED FROM 90FFEA1C TO 94EBEE14.  
CANCEL NOTAM FDC 0/4074 UPON PUBLICATION.  
CONTACT WARDELL HENNING: 405.954.9954



*Digitally signed by*  
**WARDELL HENNING**  
Oct 26, 2020

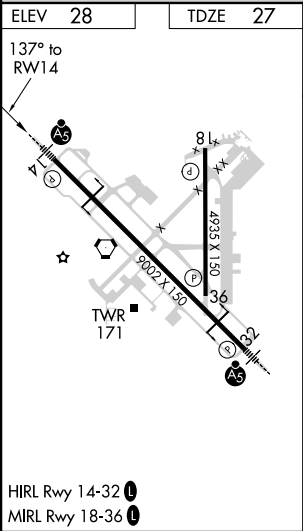
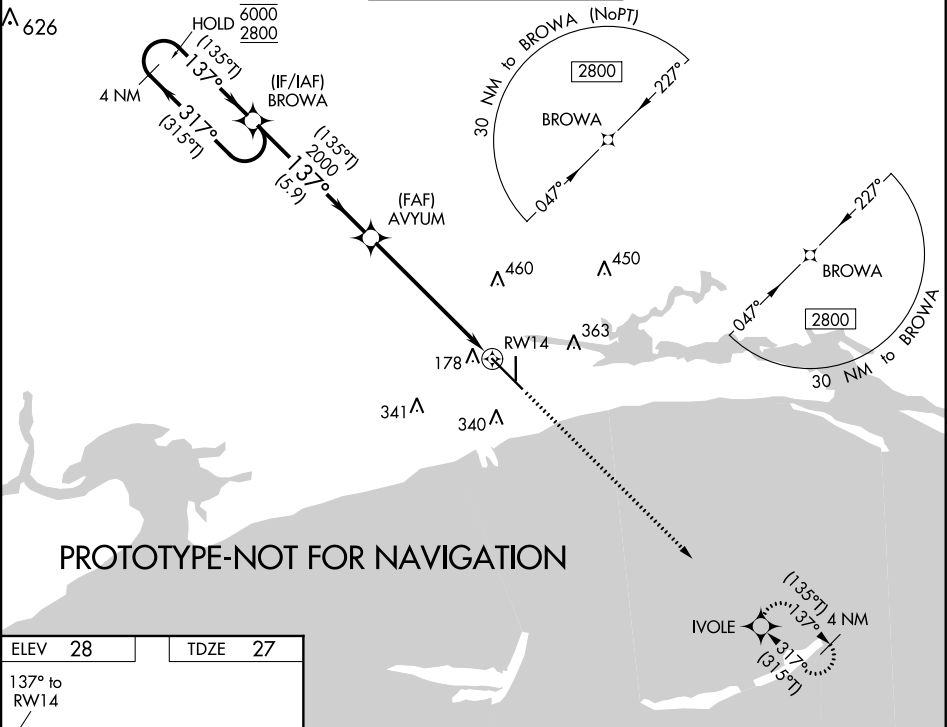


FIPC BASIC FORM						
PROCEDURE: RNAV (GPS) RWY 14 AMDT 2A			AIRPORT NAME: GULFPORT-BILOXI INTL		AIRPORT ID: KGPT	SPECIAL CONTROL NO: AG-09-097-20
FAC ID: KGPT14.02		CITY: GULFPORT			ST: MS	ORIG CHART DATE: 12/31/2020
DFL TYPE: PROC/S	THIRD PARTY: <input type="checkbox"/> YES	EST. TIME ON SITE: 0.4	REIMB. NUMBER:	PTS TASK ID:		
PREFLIGHT NOTES						
REVIEWER:					DATE:	
COMMENTS:					CHECK ONE:	
					<input type="checkbox"/> FLT CK REQ <input type="checkbox"/> NFCR <input type="checkbox"/> REJECT	
						YES
					CPV COMPLETE?	
PROCEDURE RESULTS						
INSPECTION DATE: 10/19/2020	CREW #: VN335	N #: N73	INSTRUMENT PROCEDURE STATUS: <input checked="" type="checkbox"/> SAT <input type="checkbox"/> SAT W/CHANGES <input type="checkbox"/> UNSAT		ARINC CODING: <input checked="" type="checkbox"/> SAT <input type="checkbox"/> SAT/GOLD <input type="checkbox"/> UNSAT	
FLIGHT INSPECTOR SIGNATURE: george e searles @ 10/19/2020 17:02			PRINTED NAME: SEARLES, GEORGE EDWARD			NOTAM INITIATED? <input type="checkbox"/> YES <input checked="" type="checkbox"/> NO
FLIGHT INSPECTOR REMARKS: Gulfport MS, RNAV (GPS) RWY 14 AMDT 2A, completed satisfactorily. CRC CHANGED FROM 90FFEA1C TO 94EBEE14. - LTP/FTP LATITUDE CHANGED FROM 302453.8350N TO 302453.8370N.						
IN-FLIGHT OBSTACLE REPORT						
OBSTRUCTION ID #:	COORDINATES OR LOCATION:	GNSS ALTITUDE (MSL):	BAROMETRIC ALTITUDE (MSL):	HEIGHT ABOVE GROUND LEVEL:		

WAAS CH <b>97301</b> <b>W14A</b>	APP CRS <b>137°</b>	Rwy Idg TDZE Apt Elev <b>9002</b> <b>27</b> <b>28</b>
--	------------------------	--

RNAV (GPS) RWY 14  
GULFPORT-BILOXI INTL (GPT)

RNP APCH. <div><div></div><div>For uncompensated Baro-VNAV systems, LNAV/VNAV NA below -3°C or above 54°C. For inop ALS, increase LNAV/VNAV all Cats visibility to RVR 5500. # RVR 1800 authorized with use of FD or AP or HUD to DA.</div><div>ASR</div></div>				MALS R <div><div></div><div></div></div>	MISSED APPROACH: Climb to 2800 direct IVOLE and hold.
ATIS <b>119.45</b>	GULFPORT APP CON ★ <b>127.5 254.25</b>	GULFPORT TOWER ★ <b>123.7 (CTAF) 0 339.8</b>	GND CON <b>120.4 348.6</b>	UNICOM <b>122.95</b>	



<div>4 NM Holding Pattern</div> <div><div>6000</div><div>2800</div><div>← 317°</div><div>→ 137°</div><div>(315°T)</div><div>(135°T)</div></div> <div>GP 3.00° TCH 50</div>		<div>VGSI and RNAV glidepath not coincident (VGSI Angle 3.00/TCH 73).</div> <div><div>BROWA</div><div>AVYUM</div><div>2000</div><div>2000</div><div>137°</div><div>135°T</div><div>5.9 NM</div><div>4.6 NM</div><div>1.5 NM</div><div>*1.5 NM to RW14</div><div>RW14</div><div>* LNAV only.</div></div>		<div>2800</div> <div>↑</div>	<div>IVOLE</div> <div>✦</div>
CATEGORY	A	B	C	D	
LPV DA #	227/24		200 (200-½)		
LNAV/VNAV DA	404/35		377 (400-¾)		
LNAV MDA	580/24 553 (600-½)		580/60 553 (600-1¼)		
CIRCLING	580-1 552 (600-1)	640-1 612 (700-1)	820-2¼ 792 (800-2¼)	820-2½ 792 (800-2½)	

19115

RNAV (GPS) RWY 14  
GULFPORT-BILOXI INTL (GPT)

**MISSED APPROACH:** Climb to 2800 direct IVOLE and hold.

GULFPORT-BILOXI INTL (GPT)  
RNAV (GPS) RWY 14

SC-4. 21 MAY 2020 to 18 JUN 2020



