

Flight Procedures Cover Page	Task Action: P-NOTAM	Task Type: IAP	Estimated Chart Date: 07/15/2021	APWS Task ID: 88D41414673D40CDB9F0A772948B5035	APWS Project ID: 245370147B4C4971B9D7E35659487434
Procedure: RNAV (GPS) RWY 34 AMDT 3D		Enroute: NO	Specialist: Lafferty, James		Agreement Number:
Airport ID: KGKY			Airport City: ARLINGTON		State: TX
Facility ID:	Facility Type:	Flight Inspection Remark Type:			
<p>Procedure Comments:</p> <p>P-NOTAM</p> <p>This Cancels FDC 0/7186</p> <p>Order 8260.3, chapter 2, New Circling Criteria Applied</p> <p>Contact Dave Teffeteller at 202-267-51</p>					

QUALITY  
18  
CHECKED

QUALITY  
41  
CHECKED

ARLINGTON, TEXAS

OLD  
AL-5189 (FAA)

15148

WAAS CH <b>93827</b> <b>W34A</b>	APP CRS <b>342°</b>	Rwy Idg <b>6080</b> TDZE <b>620</b> Apt Elev <b>628</b>
--	------------------------	---

# RNAV (GPS) RWY 34

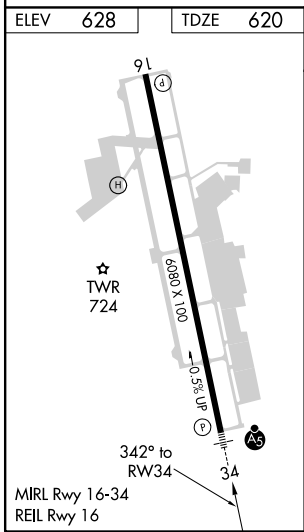
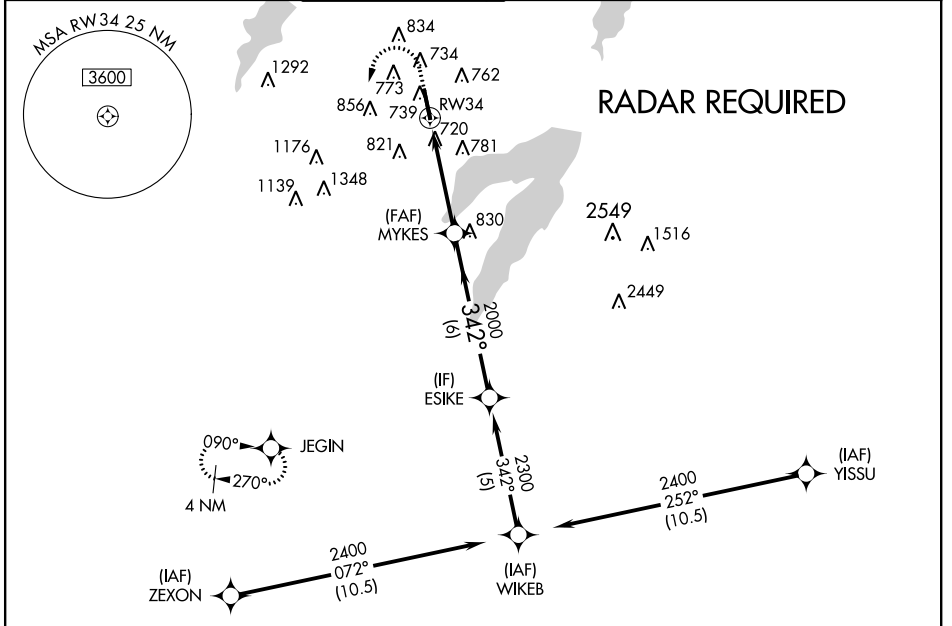
ARLINGTON MUNI (GKY)

**⚠** When local altimeter setting not received, use Grand Prairie Muni altimeter setting.  
**⚠** For uncompensated Baro-VNAV systems, LNAV/VNAV NA below -16°C (4°F) or above 54°C (130°F). DME/DME RNP-0.3 NA. Inop table does not apply to LPV.  
For inop MALSR increase LNAV Cat A, B visibility to 1 mile.

**MALSR**

**MISSED APPROACH:** Climb to 1100 then climbing left turn to 2800 direct JEGIN and hold.

ASOS <b>127.375</b>	REGIONAL APP CON <b>135.975 379.9</b>	ARLINGTON TOWER ★ <b>128.625</b>	GND CON <b>121.875</b>	CLNC DEL <b>121.875</b>	CLNC DEL <b>118.85</b> (When tower closed)	CTAF <b>128.625</b>
------------------------	--	-------------------------------------	---------------------------	----------------------------	--	------------------------



ELEV 628	TDZE 620
* LNAV only	
* 1.3 NM to RW34	
RW34	
MYKES	
ESIKE	
2000	
2300	
342°	
GS 3.00°	
TCH 60	
1.3 NM	
2.9 NM	
6 NM	
CATEGORY	
A	
B	
C	
D	
LPV DA	
820-3/4	
200 (200-3/4)	
NA	
LNAV/VNAV DA	
1021-3/4	
401 (400-3/4)	
NA	
LNAV MDA	
1060-3/4	
440 (500-3/4)	
NA	
CIRCLING	
1100-1	
472 (500-1)	
1100-1 1/2	
472 (500-1 1/2)	
NA	

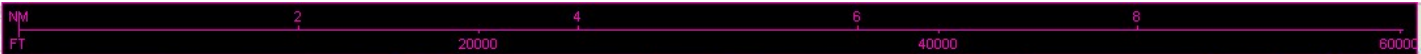
ARLINGTON, TEXAS  
Amdt 3C 28MAY15

32°40'N-97°06'W

# RNAV (GPS) RWY 34

SC-2, 28 MAY 2015 to 25 JUN 2015





AIRPORT ID	KGKY
AIRPORT NAME	ARLINGTON MUNI
CITY	ARLINGTON
STATE	TEXAS
PROCEDURE ID	RNAV GPS RWY 34
AMENDMENT #	3D
CHART DATE	7/15/21
SCALE	1:100,000
SEGMENT	CIRCLING

