


Flight Procedures Cover Page	Task Action: P-NOTAM	Task Type: IAP	Estimated Chart Date: 03/25/2021	APWS Task ID: 81F6751AB2E349E48919465DE1E043C0	APWS Project ID: DD8F9EBDFEBA4FD89EA4F1E600538FC0
Procedure: RNAV (GPS) RWY 5 AMDT 1C		Enroute: NO	Specialist: Lafferty, James		Agreement Number:
Airport ID: KJBR			Airport City: JONESBORO		State: AR
Facility ID:	Facility Type:	Flight Inspection Remark Type:			
<div> <div> Procedure Comments: P-NOTAM This Cancels FDC 0/1102 Order 8260.3, chapter 2, New Circling Criteria Applied Contact Dave Teffeteller at 202-267-5177 </div> <div>  </div> </div>					

WAAS CH 77820 W05A	APP CRS 050°	Rwy Idg 6200 TDZE 259 Apt Elev 262
--	------------------------	---

RNAV (GPS) RWY 5

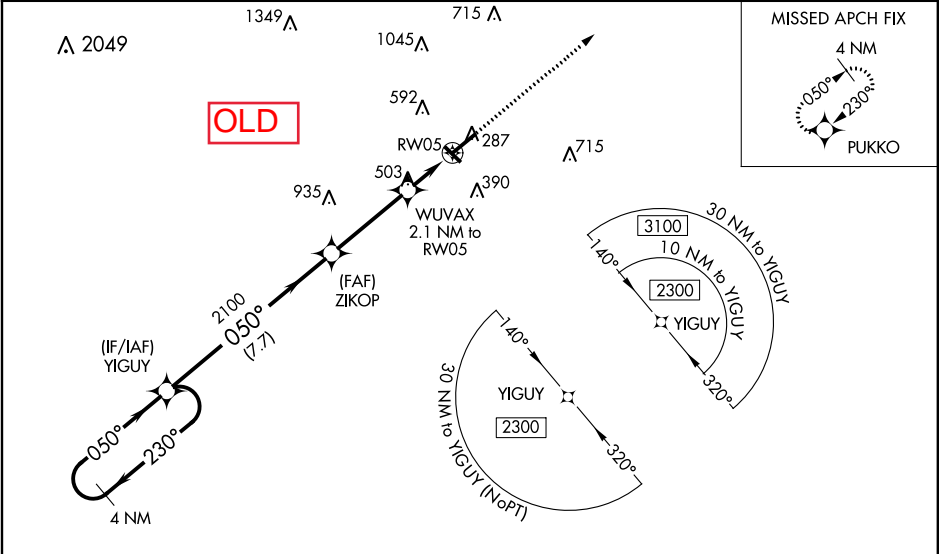
JONESBORO MUNI (JBR)

RNP APCH.

Circling Rwy 31 NA at night. Baro-VNAV and VDP NA when using Walnut Ridge altimeter setting. For uncompensated Baro-VNAV systems, LNAV/VNAV NA below -12°C or above 54°C. Circling NA northwest of Rwy 5-23. Rwy 5 helicopter visibility reduction below ¾ SM NA. When local altimeter setting not received, use Walnut Ridge altimeter setting: increase LPV DA 593 feet and visibility ⅛ SM, and LNAV/VNAV DA to 669 feet; increase all MDAs 60 feet and visibility LNAV Cat C/D ¼ SM and Circling Cat C ⅛ SM.

MISSED APPROACH:
Climb to 2200 direct
PUKKO and hold.

ASOS 118.525	MEMPHIS CENTER 120.075 289.4	UNICOM 123.0 (CTAF) 0
------------------------	--	---------------------------------



ELEV 262

TDZE 259

2200 PUKKO

*LNAV only.

4 NM Holding Pattern

YIGUY

ZIKOP

WUVAX 2.1 NM to RW05

*1.4 NM to RW05

RW05

GP 3.00° TCH 45

2300

230°

050°

2100

*960

7.7 NM

3.6 NM

0.7

1.4

CATEGORY	A	B	C	D
LPV DA	539-7⁄8 280 (300-7⁄8)			
LNAV/VNAV DA	615-1 1⁄8 356 (400-1 1⁄8)			
LNAV MDA	760-1	501 (500-1)	760-1 3⁄8	501 (500-1 3⁄8)
CIRCLING	760-1	498 (500-1)	760-1 1⁄2	820-2
			498 (500-1 1⁄2)	558 (600-2)

316

6200 X 150

4099 X 150

0.38% UP

050° to RW05

MIRL Rwy 5-23 and 13-31 0

KJBR
JONESBORO MUNI
RNAV (GPS) RWY 5
CIRCLING 100K

