




Flight Procedures Cover Page	Task Action: FLIGHT CHECK	Task Type: IAP	Estimated Chart Date: 02/22/2024	APWS Task ID: AA0830735B894814B7FD3FEF3098FAEE	APWS Project ID: 987EE32083C94B5F8A6212CF36819667
Procedure: RNAV (GPS) RWY 35 AMDT 3A		Enroute: NO	Specialist: Boone-walt, Rose		Agreement Number:
Airport ID: KLGU			Airport City: LOGAN		State: UT
Facility ID:	Facility Type:	Flight Inspection Remark Type: New FC Slot			
<div>Procedure Comments: Clear NTM FDC 2/3865.</div> <div>CONTACT: DAVID M. DANNER AJV-A421 LEAD: 405.954.5077</div> <div><div>QUALITY 41 CHECKED</div><div>QUALITY 32 CHECKED <div>Digitally signed by PABLO ORTIZ-JR Nov 14, 2023</div></div></div>					

[illegible]

WAAS CH 57900 W35A	APP CRS 352°	Rwy Idg 9020 TDZE 4457 Apt Elev 4457
--	------------------------	---

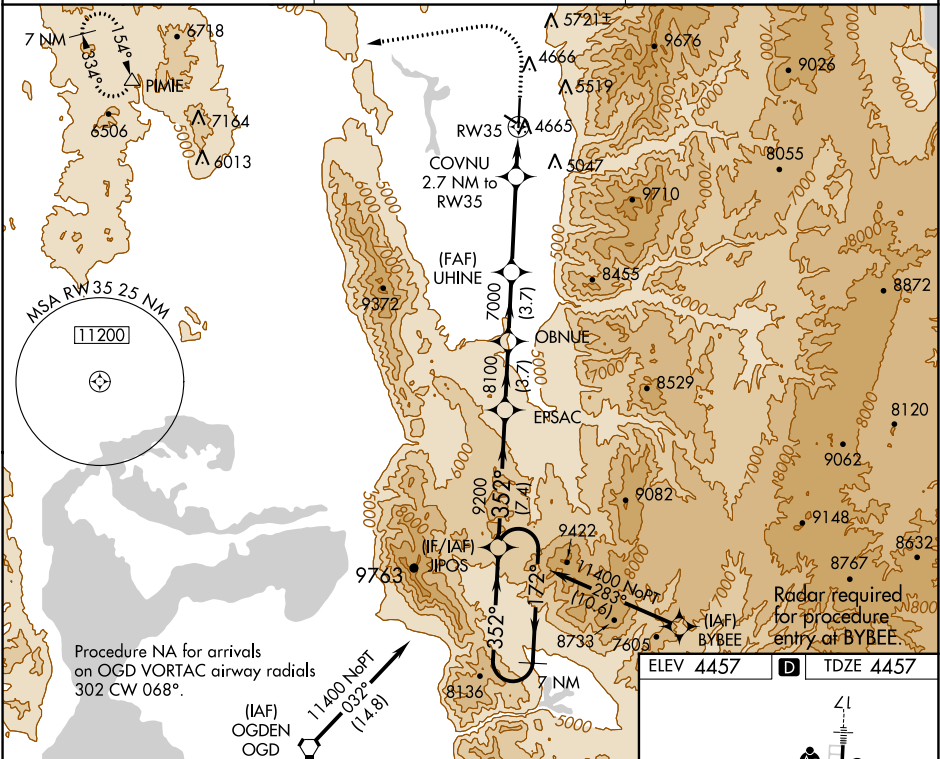
OLD

RNAV (GPS) RWY 35
LOGAN-CACHE (LGU)

   -15°C DME/DME RNP-0.3 NA. Circling NA east of Rwy 17-35. Night Landing: Rwy 10, 28 NA.

MISSED APPROACH: Climb to 4900 then climbing left turn to 10000 direct PIMIE and hold, continue climb-in-hold to 10000.

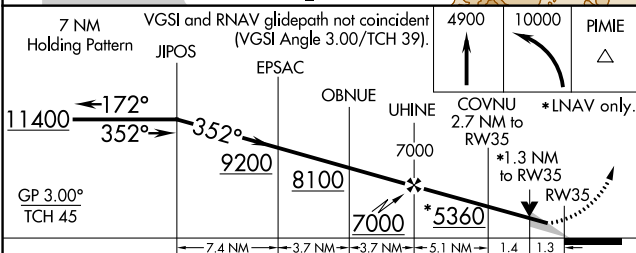
ASOS 135.275	SALT LAKE CENTER 127.7 354.125	UNICOM 122.8 (CTAF) 0
------------------------	--	---------------------------------




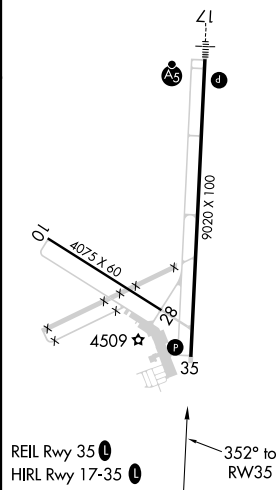
Procedure NA for arrivals
on OGD VORTAC airway radials
302 CW 068°.

Radar required
for procedure
entry at BYB

ELEV 4457	D	TDZE 4457
-----------	----------	-----------



CATEGORY		A	B	C	D
LPV	DA	4677- ³ / ₄ 220 (300- ³ / ₄)			
LNAV	MDA	4920-1	463 (500-1)	4920-1 ³ / ₈	463 (500-1 ³ / ₈)
	CIRCLING	4920-1 463 (500-1)	4940-1 483 (500-1)	4940-1 ¹ / ₂ 483 (500-1 ¹ / ₂)	5060-2 603 (700-2)



LGU
LOGAN-CASHE
LOGAN, UT
CIRCLING

