

DME DME Assessment Results for MADII5 path FOLGO_HIMGO

Results Summary

Flyability:	Completed
DME/DME:	Completed - No Critical DMEs
Name:	Robert CTR Ellis
Project File:	C:\Users\Robert CTR Ellis\Desktop\KORD DME Screens\KORD STAR MADII FIVE 20190920 DME.tgs
Output File:	C:\Users\Robert CTR Ellis\Desktop\KORD DME Screens\KORD [IFPA] MADII5 20190923_1219 CDT\FOLGO_HIMGO\KORD MADII5 RNAV STAR FOLGO HIMGO 20190923_1219 CDT.pdf
Procedure Name:	MADII5
Software: DmeDmePlugin:	5.6.0
Date/Time:	09/23/2019 12:19 CDT
Databases:	DTED Level 0 MAX

Failures

No Failures

Warnings

No Warnings

Notes For Flight Check

None

Flight Plan

Name	Type	Lat/Lon	Altitude (ft)	VNAV Mode	Ground Speed (kts)	Turn Type	Leg Type
FOLGO	WP	N44° 51' 15.84", W087° 41' 16.27"	9000	VNAV	200	FLY_BY	TF
FGHRN	WP	N44° 06' 08.00", W087° 48' 09.00"	9000	VNAV	200	FLY_BY	TF
FAALZ	WP	N43° 46' 07.03", W087° 50' 55.53"	9000	VNAV	200	FLY_BY	TF
KOHL	WP	N43° 38' 16.97", W087° 50' 29.01"	9000	VNAV	200	FLY_BY	TF
GURNN	WP	N43° 30' 26.14", W087° 49' 36.77"	6000	VNAV	200	FLY_BY	TF
CHDRR	WP	N43° 20' 10.89", W087° 52' 19.44"	6000	VNAV	200	FLY_BY	TF
ZANDI	WP	N42° 49' 42.03", W088° 14' 27.17"	6000	VNAV	200	FLY_BY	TF
HOPSS	WP	N42° 42' 19.25", W088° 16' 47.79"	6000	VNAV	200	FLY_BY	TF
HUNKA	WP	N42° 31' 57.23", W088° 17' 13.51"	6000	VNAV	200	FLY_BY	TF
MADII	WP	N42° 18' 03.47", W088° 18' 49.73"	6000	VNAV	200	FLY_BY	TF
SOOLU	WP	N42° 11' 46.95", W088° 08' 51.70"	4000	VNAV	200	FLY_BY	TF
KURKK	WP	N42° 05' 30.61", W088° 01' 37.92"	4000	VNAV	200	FLY_BY	TF
VULCN	WP	N42° 05' 30.34", W087° 47' 39.02"	4000	VNAV	200	FLY_BY	TF
HIMGO	WP	N42° 05' 27.84", W087° 30' 31.89"	4000	VNAV	200	FLY_OVER	TF

DME DME Assessment Results for MADII5 path FOLGO_HIMGO

Flyability	
Flight Type:	RNAV_STAR
Selected Airport:	KORD [IFPA]
Climb Gradient:	None assigned
Speeds:	200 Ground Speed to 11000 FT
	240 Ground Speed to 18000 FT
	260 Ground Speed to 24000 FT
	340 Ground Speed above 24000 FT
Descent During a Turn:	Allowed
VNAV Mode:	Flight Plan

DME/DME	
RNP:	RNP 2
Flight Mode:	Manual
Line of Sight (DTED Level 0 Max):	Evaluated
Inertial Drift:	Enabled
Initial Drift:	0.558 NM
INS Drift Rate:	8.0 NM/Hour
Range Mode:	OSV
RNP Edges:	Evaluated
Min DME Range:	3.0 NM
DME Types:	DME, VOR-DME, VORTAC
DME Include Angles:	30 to 150
Critical DMEs:	Allowed
DoD Facilities:	Not included
Foreign Facilities:	Not included
High DMEs:	Included
Low DMEs:	Included
Terminal DMEs:	Included
Flight Check DMEs:	Not selected
Higher Altitudes:	Not Evaluated
Near Maximum Altitude:	Not Evaluated
Automatic ESVs:	Enabled
Disabled DMEs:	None

DME DME Assessment Results for MADII5 path FOLGO_HIMGO

DME/DME (Continued)										
DMEs Used										
#	Name	Lat/Lon	MAGVAR	Range	Type	Source	Critical	Status	Time	Distance
1	OBK	N42° 13' 16.96", W087° 57' 05.83"	2.0 W	130	H	IFPA	NO	Enabled	47.5 %	47.5 %
2	MTW	N44° 07' 42.60", W087° 40' 47.71"	0.0 E	25	T	IFPA	NO	Enabled	16.2 %	16.2 %
3	RFD	N42° 13' 32.08", W089° 11' 57.38"	1.0 E	40	L	IFPA	NO	Enabled	0.3 %	0.3 %
4	ENW	N42° 35' 56.61", W087° 55' 54.22"	0.0 E	25	T	IFPA	NO	Enabled	19 %	19 %
5	CGT	N41° 30' 36.02", W087° 34' 17.57"	2.0 E	40	L	IFPA	NO	Enabled	8.5 %	8.5 %
6	MNM	N45° 10' 48.58", W087° 38' 49.83"	0.0 E	40	L	IFPA	NO	Enabled	10.1 %	10.1 %
7	AUW	N44° 50' 48.40", W089° 35' 11.68"	2.0 E	40	L	IFPA	NO	Enabled	10.3 %	10.3 %
8	GRB	N44° 33' 18.58", W088° 11' 41.49"	1.0 E	130	H	IFPA	NO	Enabled	31.8 %	31.8 %
9	LJT	N43° 06' 35.18", W088° 02' 14.21"	0.0 E	40	L	IFPA	NO	Enabled	34 %	34 %
10	BUU	N42° 41' 21.57", W088° 18' 06.40"	0.0 E	25	T	IFPA	NO	Enabled	17.2 %	17.2 %
11	HRK	N42° 45' 43.81", W087° 48' 53.02"	0.0 E	25	T	IFPA	NO	Enabled	11.7 %	11.7 %
12	JVL	N42° 33' 28.83", W089° 06' 18.93"	3.0 E	40	L	IFPA	NO	Enabled	0.9 %	0.9 %
13	OSH	N43° 59' 25.56", W088° 33' 21.36"	2.0 E	40	L	IFPA	NO	Enabled	37 %	37 %
14	JOT	N41° 32' 47.11", W088° 19' 06.28"	2.0 E	130	H	IFPA	NO	Enabled	5.1 %	5.1 %
15	BAE	N43° 07' 00.67", W088° 17' 03.64"	2.0 E	130	H	IFPA	NO	Enabled	60.8 %	60.9 %
16	FAH	N43° 46' 07.63", W087° 50' 55.57"	2.0 W	40	L	IFPA	NO	Enabled	34.7 %	34.7 %
17	DPA	N41° 53' 25.30", W088° 21' 00.62"	2.0 E	40	L	IFPA	NO	Enabled	27.7 %	27.6 %
18	GCO	N41° 59' 38.72", W087° 54' 08.38"	0.0 E	40	L	IFPA	NO	Enabled	27.1 %	27.1 %

DME DME Assessment Results for MADII5 path FOLGO_HIMGO

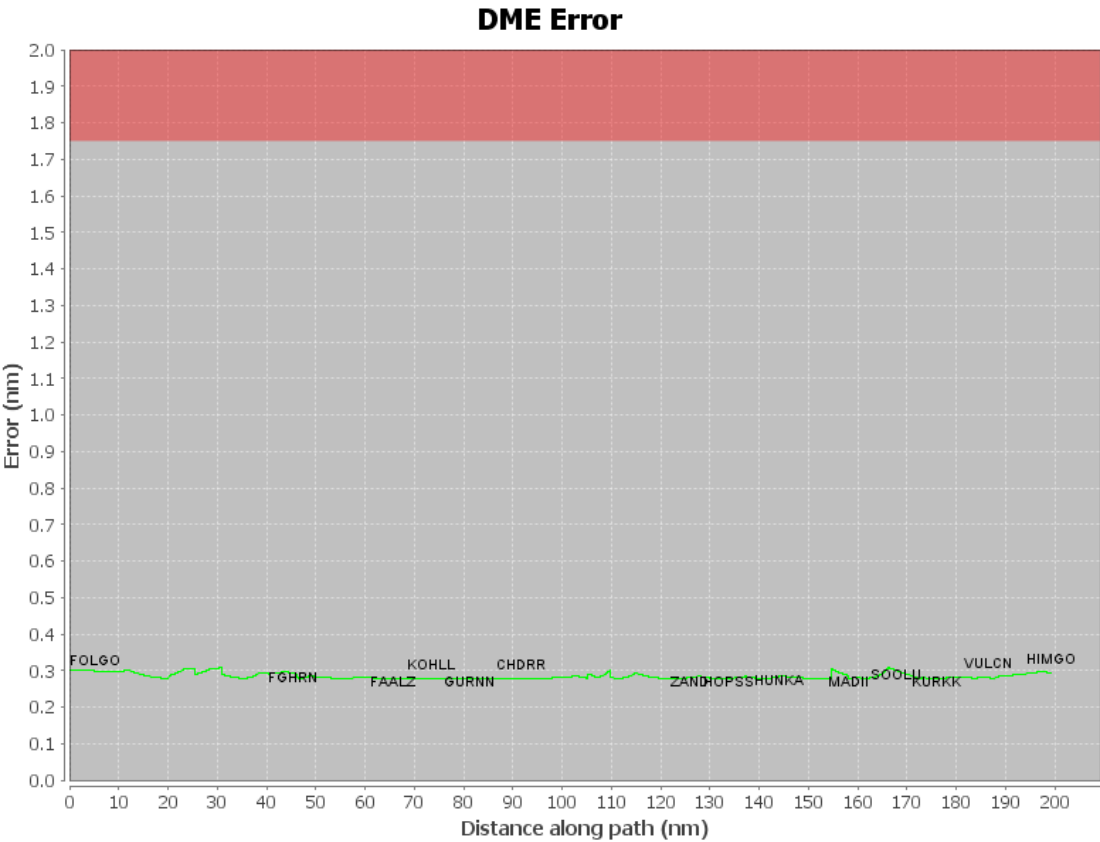
Flight Check DME Selection						
Distance [NM]	Selected DMEs					Alternate
0.0	AUW	MNM	GRB			
18.8	MNM	GRB	MTW	AUW	BAE	
19.4	MNM	GRB	AUW	BAE		
20.0	MNM	GRB	MTW	AUW	BAE	
20.1	MTW	GRB	BAE	AUW		
20.6	MTW	GRB	BAE			
25.8	FAH	GRB	BAE	MTW		
28.6	BAE	GRB	FAH			
37.3	MTW	OSH	GRB	FAH		
39.5	GRB	OSH	BAE	MTW	FAH	
40.5	GRB	OSH	FAH	BAE		
46.1	MTW	GRB	FAH	OSH		
52.4	FAH	OSH	BAE	MTW		
61.8	MTW	OSH	BAE			
66.1	BAE	OSH				
67.2	BAE	OSH	LJT			
68.6	BAE	OSH	LJT	GRB		
72.0	OSH	BAE	LJT	FAH		
73.9	OSH	BAE	LJT	FAH	GRB	
81.4	OSH	BAE	LJT	FAH		
96.1	OSH	BAE	LJT	OBK	FAH	
98.8	OSH	BAE	OBK	FAH		
105.3	OBK	BAE	OSH			
109.9	OBK	BAE	OSH	HRK		
110.6	LJT	BAE	OBK	OSH	HRK	
111.0	LJT	BAE	OBK	HRK		
111.1	LJT	BAE	OBK			
113.2	LJT	BAE	OBK	HRK		
119.8	HRK	LJT	BUU	BAE		
121.1	HRK	LJT	BUU	ENW	BAE	
131.9	HRK	BAE	ENW	LJT	OBK	
135.3	ENW	LJT	BAE	OBK		
138.4	ENW	BAE	LJT	BUU	OBK	
146.9	ENW	GCO	OBK	BUU	BAE	DPA
148.6	ENW	GCO	OBK	BUU	DPA	
154.7	DPA	OBK	BUU	GCO		
158.1	ENW	GCO	RFD	BUU	DPA	OBK
158.7	ENW	GCO	DPA	OBK	BUU	JVL
159.8	ENW	GCO	DPA	OBK	BUU	
160.7	DPA	OBK	ENW	GCO		
162.3	DPA	OBK	GCO			
170.4	DPA	GCO	OBK	JOT		
171.2	GCO	OBK	DPA			
173.4	DPA	GCO	OBK	JOT		
175.2	DPA	GCO	JOT			
176.1	DPA	GCO	OBK	JOT		
178.9	DPA	GCO	OBK			
179.3	DPA	OBK				
181.9	CGT	DPA	OBK	GCO	JOT	
186.1	CGT	DPA	GCO	OBK		
186.7	GCO	OBK	DPA			
187.1	GCO	OBK	CGT	DPA		
198.4	CGT	OBK	GCO			

DME DME Assessment Results for MADII5 path FOLGO_HIMGO

Inertial Drift Segments			
#	Start Location	End Location	Length [NM]
1	N42° 04' 56.49", W088° 05' 21.56"	N42° 03' 23.19", W088° 04' 33.91"	1.6632
2	N44° 16' 25.52", W087° 09' 00.87"	N44° 10' 25.78", W087° 31' 56.61"	17.4931

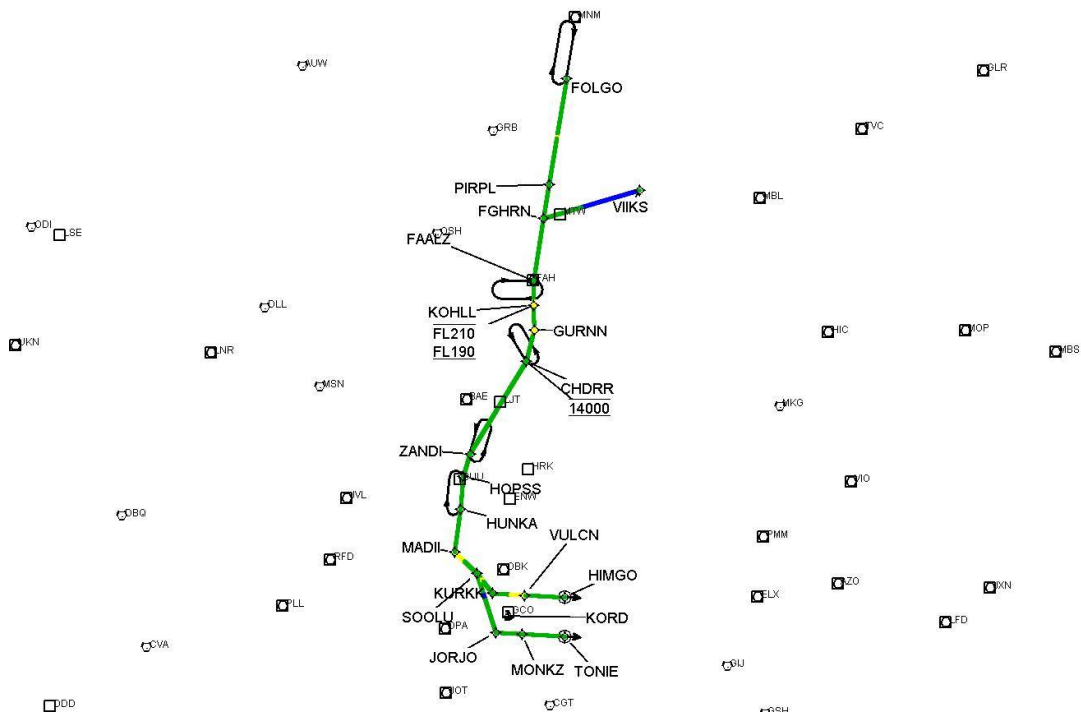
Available DMEs by Waypoints		
Waypoint Before	Waypoint After	DME List
FOLGO	FGHRN	MTW, AUW, OSH, GRB, BAE, FAH, MNM
FGHRN	FAALZ	MTW, OSH, GRB, BAE, FAH
FAALZ	KOHL	MTW, OSH, BAE, GRB, LJT, FAH
KOHL	GURNN	OSH, BAE, GRB, LJT, FAH
GURNN	CHDRR	OSH, BAE, GRB, LJT, FAH
CHDRR	ZANDI	HRK, BUU, OSH, BAE, LJT, OBK, FAH, ENW
ZANDI	HOPSS	HRK, BUU, BAE, LJT, OBK, ENW
HOPSS	HUNKA	HRK, GCO, BUU, DPA, BAE, LJT, OBK, ENW
HUNKA	MADII	GCO, BUU, DPA, BAE, LJT, OBK, ENW
MADII	SOOLU	RFD, JVL, GCO, BUU, DPA, OBK, ENW
SOOLU	KURKK	GCO, DPA, OBK, JOT
KURKK	VULCN	CGT, GCO, DPA, OBK, JOT
VULCN	HIMGO	CGT, GCO, DPA, OBK

User Data Files								
#	File Name							
1	New Analysis.udt							
User DMEs								
#	Name	Lat/Lon	MAGVAR	Range	Elevation [ft]	Frequency	Replaces	Status
1	UDT ESV OBK OBK [IFPA]	N42° 13' 16.96", W087° 57' 05.83"	2.0 W	130	707	113.0	UDT ESV OBK	
ESV:		Bearing [True]: 349.0° to 7.0° Bearing [Mag]: 351.0° to 9.0°				Arc Distance: Out to 65.0 NM Altitude: 5000.0 to 16000.0 ft		
2	UDT ESV AUW AUW [IFPA]	N44° 50' 48.40", W089° 35' 11.68"	2.0 E	40	1230.3	111.6	UDT ESV AUW	
ESV:		Bearing [True]: 88.0° to 104.0° Bearing [Mag]: 86.0° to 102.0°				Arc Distance: Out to 86.0 NM Altitude: 8900.0 to 16000.0 ft		
3	UDT ESV OSH OSH [IFPA]	N43° 59' 25.56", W088° 33' 21.36"	2.0 E	40	787.4	111.8	UDT ESV OSH	
ESV:		Bearing [True]: 121.0° to 163.0° Bearing [Mag]: 119.0° to 161.0°				Arc Distance: Out to 63.0 NM Altitude: 5000.0 to 17000.0 ft		
4	UDT ESV GRB GRB [IFPA]	N44° 33' 18.58", W088° 11' 41.49"	1.0 E	130	766	115.5	UDT ESV GRB	
ESV:		Bearing [True]: 159.0° to 170.0° Bearing [Mag]: 158.0° to 169.0°				Arc Distance: Out to 65.0 NM Altitude: 4900.0 to 16000.0 ft		
5	UDT ESV BAE BAE [IFPA]	N43° 07' 00.67", W088° 17' 03.64"	2.0 E	130	1069	116.4	UDT ESV BAE	
ESV:		Bearing [True]: 12.0° to 38.0° Bearing [Mag]: 10.0° to 36.0°				Arc Distance: Out to 89.0 NM Altitude: 8900.0 to 20000.0 ft		



DME DME Assessment Results for MADII5 path FOLGO_HIMGO

Graphic Depiction 1



DME DME Assessment Results for MADII5 path PIRPL_FGHRN

Results Summary

Flyability:	Completed
DME/DME:	Completed - No Critical DMEs
Name:	Robert CTR Ellis
Project File:	C:\Users\Robert CTR Ellis\Desktop\KORD DME Screens\KORD STAR MADII FIVE 20190920 DME.tgs
Output File:	C:\Users\Robert CTR Ellis\Desktop\KORD DME Screens\KORD [IFPA] MADII5 20190923_1219 CDT\PIRPL_FGHRN\KORD MADII5 RNAV STAR PIRPL FGHRN 20190923_1219 CDT.pdf
Procedure Name:	MADII5
Software: DmeDmePlugin:	5.6.0
Date/Time:	09/23/2019 12:19 CDT
Databases:	DTED Level 0 MAX

Failures

No Failures

Warnings

No Warnings

Notes For Flight Check

None

Flight Plan

Name	Type	Lat/Lon	Altitude (ft)	VNAV Mode	Ground Speed (kts)	Turn Type	Leg Type
PIRPL	WP	N44° 17' 04.17", W087° 46' 29.97"	9000	VNAV	200	FLY_BY	TF
FGHRN	WP	N44° 06' 08.00", W087° 48' 09.00"	9000	VNAV	200	FLY_BY	TF

Flyability

Flight Type:	RNAV_STAR
Selected Airport:	KORD [IFPA]
Climb Gradient:	None assigned
Speeds:	200 Ground Speed to 11000 FT
	240 Ground Speed to 18000 FT
	260 Ground Speed to 24000 FT
	340 Ground Speed above 24000 FT
Descent During a Turn:	Allowed
VNAV Mode:	Flight Plan

DME DME Assessment Results for MADII5 path PIRPL_FGHRN

DME/DME	
RNP:	RNP 2
Flight Mode:	Manual
Line of Sight (DTED Level 0 Max):	Evaluated
Inertial Drift:	Enabled
Initial Drift:	0.558 NM
INS Drift Rate:	8.0 NM/Hour
Range Mode:	OSV
RNP Edges:	Evaluated
Min DME Range:	3.0 NM
DME Types:	DME, VOR-DME, VORTAC
DME Include Angles:	30 to 150
Critical DMEs:	Allowed
DoD Facilities:	Not included
Foreign Facilities:	Not included
High DMEs:	Included
Low DMEs:	Included
Terminal DMEs:	Included
Flight Check DMEs:	Not selected
Higher Altitudes:	Not Evaluated
Near Maximum Altitude:	Not Evaluated
Automatic ESVs:	Enabled
Disabled DMEs:	None

DME/DME (Continued)										
DMEs Used										
#	Name	Lat/Lon	MAGVAR	Range	Type	Source	Critical	Status	Time	Distance
1	GRB	N44° 33' 18.58", W088° 11' 41.49"	1.0 E	130	H	IFPA	NO	Enabled	100 %	100 %
2	MTW	N44° 07' 42.60", W087° 40' 47.71"	0.0 E	25	T	IFPA	NO	Enabled	28.8 %	28.8 %
3	OSH	N43° 59' 25.56", W088° 33' 21.36"	2.0 E	40	L	IFPA	NO	Enabled	73.7 %	73.7 %
4	FAH	N43° 46' 07.63", W087° 50' 55.57"	2.0 W	40	L	IFPA	NO	Enabled	100 %	100 %
5	BAE	N43° 07' 00.67", W088° 17' 03.64"	2.0 E	130	H	IFPA	NO	Enabled	79.8 %	79.8 %

Flight Check DME Selection						
Distance [NM]	Selected DMEs					Alternate
0.0	BAE	GRB	FAH			
2.9	MTW	OSH	GRB	FAH		
5.1	GRB	OSH	BAE	MTW	FAH	
6.1	GRB	OSH	FAH	BAE		

Inertial Drift Segments			
#	Start Location	End Location	Length [NM]
1	N42° 04' 56.49", W088° 05' 21.56"	N42° 03' 23.19", W088° 04' 33.91"	1.6632
2	N44° 16' 25.52", W087° 09' 00.87"	N44° 10' 25.78", W087° 31' 56.61"	17.4931

Available DMEs by Waypoints		
Waypoint Before	Waypoint After	DME List
PIRPL	FGHRN	MTW, OSH, GRB, BAE, FAH

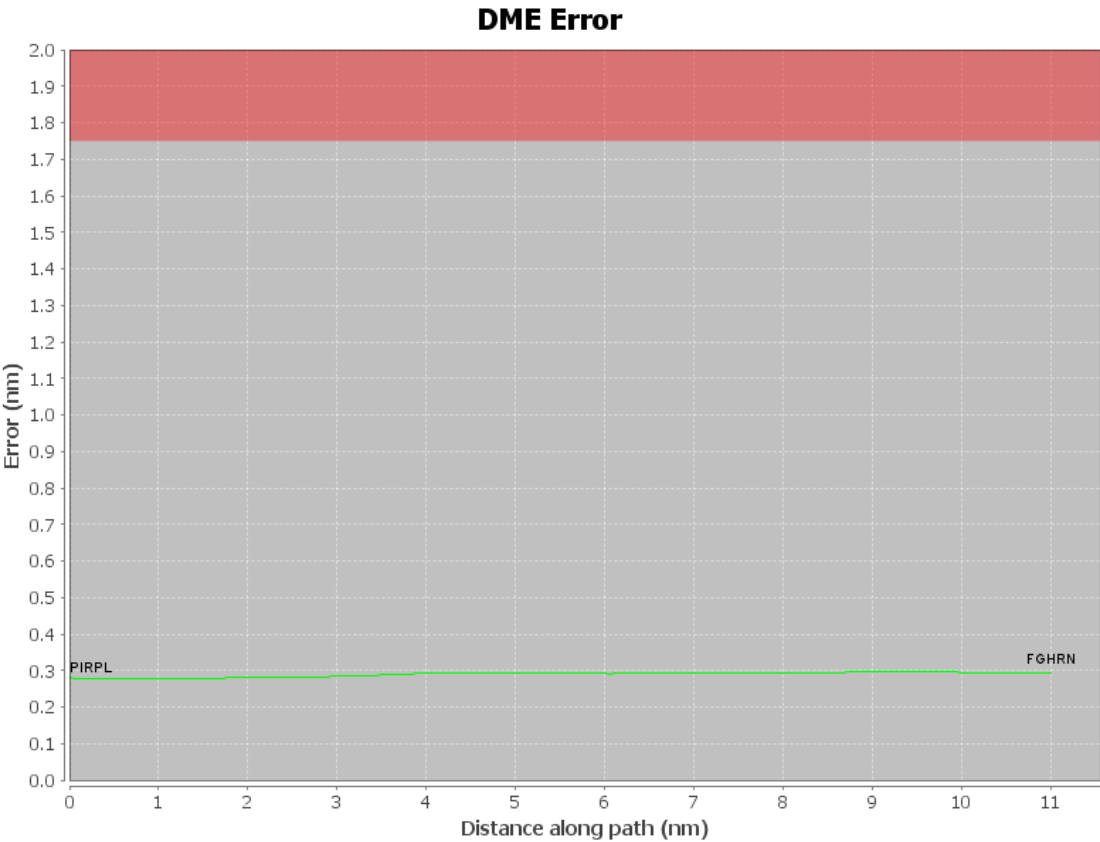
DME DME Assessment Results for MADI5 path PIRPL_FGHRN

User Data Files

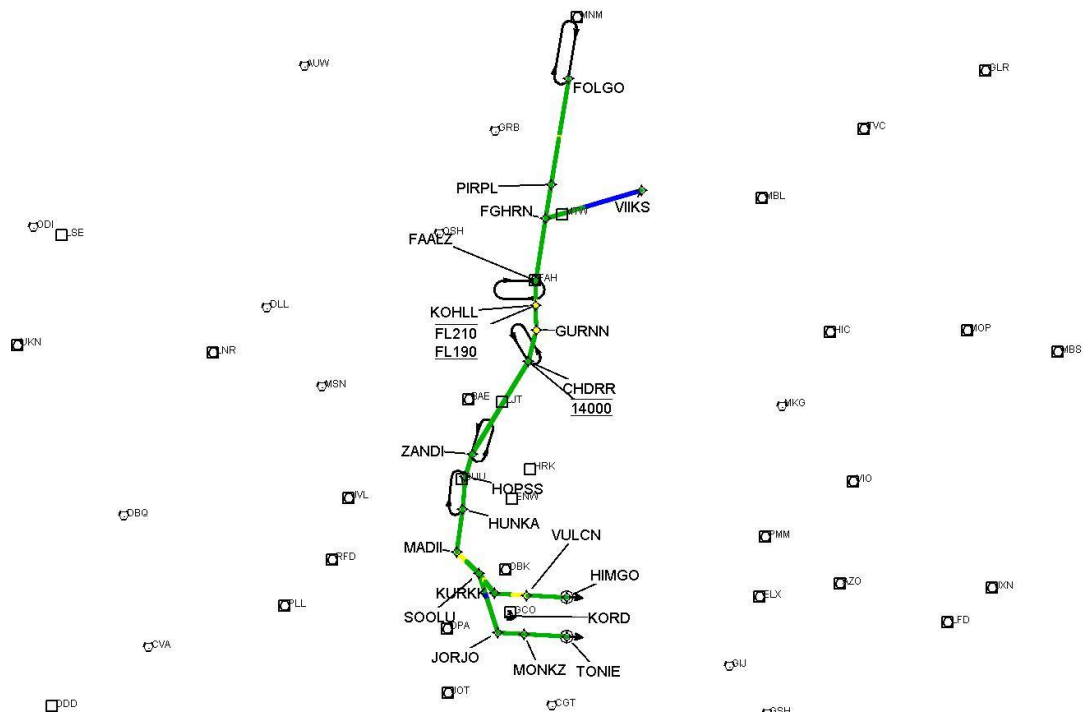
#	File Name
1	New Analysis.udt

User DMEs

#	Name	Lat/Lon	MAGVAR	Range	Elevation [ft]	Frequency	Replaces	Status
1	UDT ESV OBK OBK [IFPA]	N42° 13' 16.96", W087° 57' 05.83"	2.0 W	130	707	113.0	UDT ESV OBK	
ESV:		Bearing [True]: 349.0° to 7.0° Bearing [Mag]: 351.0° to 9.0°				Arc Distance: Out to 65.0 NM Altitude: 5000.0 to 16000.0 ft		
2	UDT ESV AUW AUW [IFPA]	N44° 50' 48.40", W089° 35' 11.68"	2.0 E	40	1230.3	111.6	UDT ESV AUW	
ESV:		Bearing [True]: 88.0° to 104.0° Bearing [Mag]: 86.0° to 102.0°				Arc Distance: Out to 86.0 NM Altitude: 8900.0 to 16000.0 ft		
3	UDT ESV OSH OSH [IFPA]	N43° 59' 25.56", W088° 33' 21.36"	2.0 E	40	787.4	111.8	UDT ESV OSH	
ESV:		Bearing [True]: 121.0° to 163.0° Bearing [Mag]: 119.0° to 161.0°				Arc Distance: Out to 63.0 NM Altitude: 5000.0 to 17000.0 ft		
4	UDT ESV GRB GRB [IFPA]	N44° 33' 18.58", W088° 11' 41.49"	1.0 E	130	766	115.5	UDT ESV GRB	
ESV:		Bearing [True]: 159.0° to 170.0° Bearing [Mag]: 158.0° to 169.0°				Arc Distance: Out to 65.0 NM Altitude: 4900.0 to 16000.0 ft		
5	UDT ESV BAE BAE [IFPA]	N43° 07' 00.67", W088° 17' 03.64"	2.0 E	130	1069	116.4	UDT ESV BAE	
ESV:		Bearing [True]: 12.0° to 38.0° Bearing [Mag]: 10.0° to 36.0°				Arc Distance: Out to 89.0 NM Altitude: 8900.0 to 20000.0 ft		



Graphic Depiction 1



DME DME Assessment Results for MADII5 path VIIKS_FGHRN

Results Summary

Flyability:	Completed
DME/DME:	Completed - No Critical DMEs
Name:	Robert CTR Ellis
Project File:	C:\Users\Robert CTR Ellis\Desktop\KORD DME Screens\KORD STAR MADII FIVE 20190920 DME.tgs
Output File:	C:\Users\Robert CTR Ellis\Desktop\KORD DME Screens\KORD [IFPA] MADII5 20190923_1219 CDT\VIIKS_FGHRN\KORD MADII5 RNAV STAR VIIKS FGHRN 20190923_1219 CDT.pdf
Procedure Name:	MADII5
Software: DmeDmePlugin:	5.6.0
Date/Time:	09/23/2019 12:19 CDT
Databases:	DTED Level 0 MAX

Failures

No Failures

Warnings

No Warnings

Notes For Flight Check

None

Flight Plan

Name	Type	Lat/Lon	Altitude (ft)	VNAV Mode	Ground Speed (kts)	Turn Type	Leg Type
VIIKS	WP	N44° 16' 47.00", W087° 07' 38.00"	9000	VNAV	200	FLY_BY	TF
FGHRN	WP	N44° 06' 08.00", W087° 48' 09.00"	9000	VNAV	200	FLY_BY	TF

Flyability

Flight Type:	RNAV_STAR
Selected Airport:	KORD [IFPA]
Climb Gradient:	None assigned
Speeds:	200 Ground Speed to 11000 FT
	240 Ground Speed to 18000 FT
	260 Ground Speed to 24000 FT
	340 Ground Speed above 24000 FT
Descent During a Turn:	Allowed
VNAV Mode:	Flight Plan

DME DME Assessment Results for MADI5 path VIKS_FGHRN

DME/DME	
RNP:	RNP 2
Flight Mode:	Manual
Line of Sight (DTED Level 0 Max):	Evaluated
Inertial Drift:	Enabled
Initial Drift:	0.558 NM
INS Drift Rate:	8.0 NM/Hour
Range Mode:	OSV
RNP Edges:	Evaluated
Min DME Range:	3.0 NM
DME Types:	DME, VOR-DME, VORTAC
DME Include Angles:	30 to 150
Critical DMEs:	Allowed
DoD Facilities:	Not included
Foreign Facilities:	Not included
High DMEs:	Included
Low DMEs:	Included
Terminal DMEs:	Included
Flight Check DMEs:	Not selected
Higher Altitudes:	Not Evaluated
Near Maximum Altitude:	Not Evaluated
Automatic ESVs:	Enabled
Disabled DMEs:	None

DME/DME (Continued)										
DMEs Used										
#	Name	Lat/Lon	MAGVAR	Range	Type	Source	Critical	Status	Time	Distance
1	GRB	N44° 33' 18.58", W088° 11' 41.49"	1.0 E	130	H	IFPA	NO	Enabled	40.1 %	40.1 %
2	MTW	N44° 07' 42.60", W087° 40' 47.71"	0.0 E	25	T	IFPA	NO	Enabled	8.1 %	8.1 %
3	OSH	N43° 59' 25.56", W088° 33' 21.36"	2.0 E	40	L	IFPA	NO	Enabled	19.9 %	19.9 %
4	MBL	N44° 16' 14.31", W086° 15' 14.56"	5.0 W	40	L	IFPA	NO	Enabled	3.2 %	3.2 %
5	BAE	N43° 07' 00.67", W088° 17' 03.64"	2.0 E	130	H	IFPA	NO	Enabled	23.3 %	23.3 %
6	FAH	N43° 46' 07.63", W087° 50' 55.57"	2.0 W	40	L	IFPA	NO	Enabled	40.1 %	40.1 %

Flight Check DME Selection						
Distance [NM]	Selected DMEs					Alternate
0.0	BAE	MBL				
1.1						
18.6	FAH	GRB	BAE	MTW		
20.1	FAH	GRB	BAE			
24.9	FAH	GRB	OSH			
30.0	MTW	GRB	FAH	OSH		

Inertial Drift Segments			
#	Start Location	End Location	Length [NM]
1	N42° 04' 56.49", W088° 05' 21.56"	N42° 03' 23.19", W088° 04' 33.91"	1.6632
2	N44° 16' 25.52", W087° 09' 00.87"	N44° 10' 25.78", W087° 31' 56.61"	17.4931

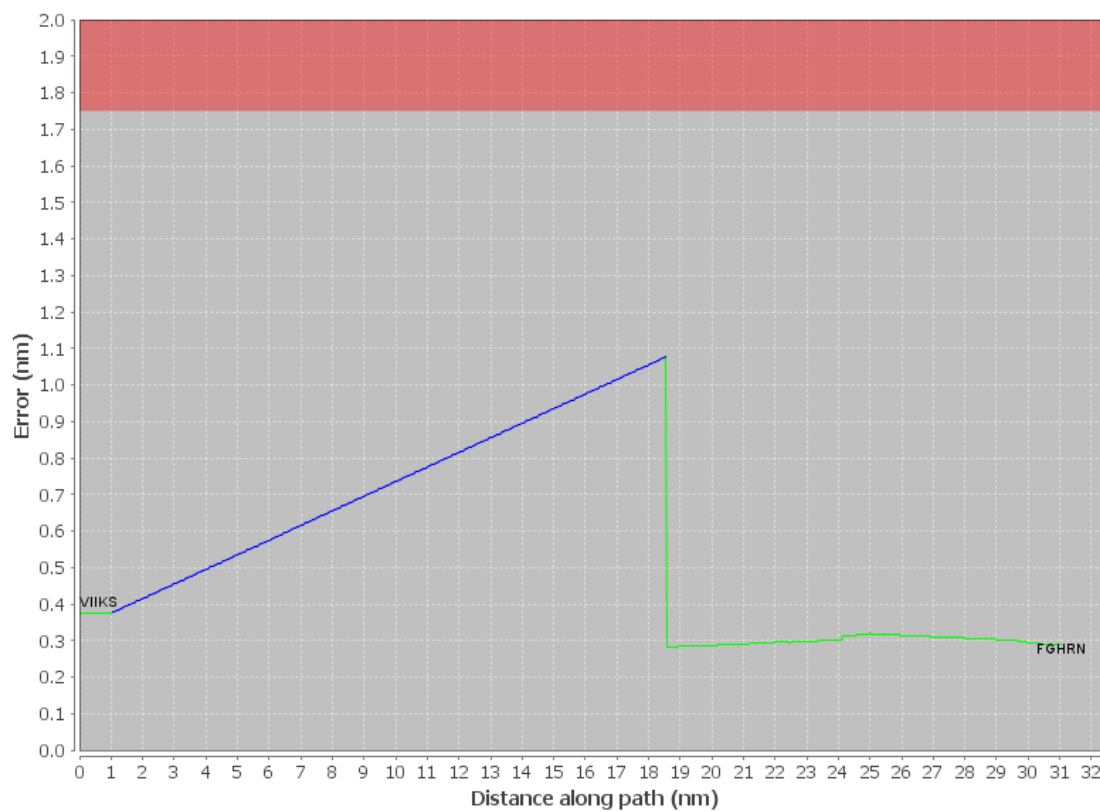
Available DMEs by Waypoints		
Waypoint Before	Waypoint After	DME List
VIKS	FGHRN	MTW, OSH, BAE, MBL, GRB, FAH

DME DME Assessment Results for MADI5 path VIIKS_FGHRN

User Data Files								
#	File Name							
1	New Analysis.udt							
User DMEs								
#	Name	Lat/Lon	MAGVAR	Range	Elevation [ft]	Frequency	Replaces	Status
1	UDT ESV OBK OBK [IFPA]	N42° 13' 16.96", W087° 57' 05.83"	2.0 W	130	707	113.0	UDT ESV OBK	
ESV:		Bearing [True]: 349.0° to 7.0° Bearing [Mag]: 351.0° to 9.0°				Arc Distance: Out to 65.0 NM Altitude: 5000.0 to 16000.0 ft		
2	UDT ESV AUW AUW [IFPA]	N44° 50' 48.40", W089° 35' 11.68"	2.0 E	40	1230.3	111.6	UDT ESV AUW	
ESV:		Bearing [True]: 88.0° to 104.0° Bearing [Mag]: 86.0° to 102.0°				Arc Distance: Out to 86.0 NM Altitude: 8900.0 to 16000.0 ft		
3	UDT ESV OSH OSH [IFPA]	N43° 59' 25.56", W088° 33' 21.36"	2.0 E	40	787.4	111.8	UDT ESV OSH	
ESV:		Bearing [True]: 121.0° to 163.0° Bearing [Mag]: 119.0° to 161.0°				Arc Distance: Out to 63.0 NM Altitude: 5000.0 to 17000.0 ft		
4	UDT ESV GRB GRB [IFPA]	N44° 33' 18.58", W088° 11' 41.49"	1.0 E	130	766	115.5	UDT ESV GRB	
ESV:		Bearing [True]: 159.0° to 170.0° Bearing [Mag]: 158.0° to 169.0°				Arc Distance: Out to 65.0 NM Altitude: 4900.0 to 16000.0 ft		
5	UDT ESV BAE BAE [IFPA]	N43° 07' 00.67", W088° 17' 03.64"	2.0 E	130	1069	116.4	UDT ESV BAE	
ESV:		Bearing [True]: 12.0° to 38.0° Bearing [Mag]: 10.0° to 36.0°				Arc Distance: Out to 89.0 NM Altitude: 8900.0 to 20000.0 ft		

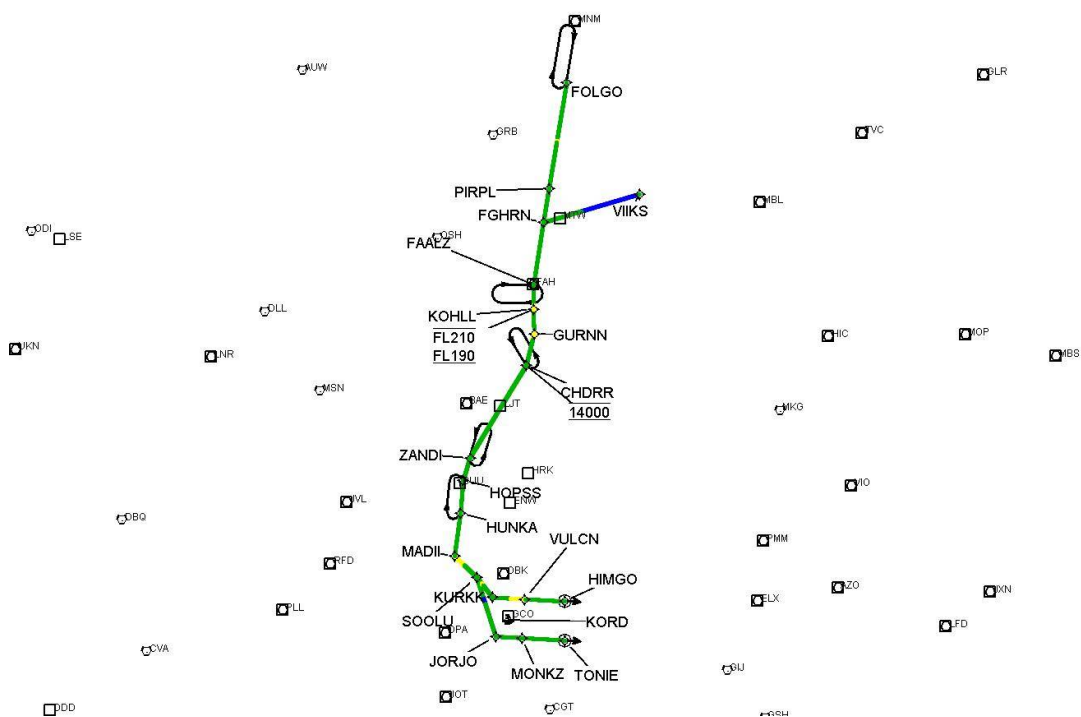
DME DME Assessment Results for MADI5 path VIIKS_FGHRN

DME Error



DME DME Assessment Results for MADII5 path VIKS_FGHRN

Graphic Depiction 1



DME DME Assessment Results for MADII5 path SOOLU_TONIE

Results Summary

Flyability:	Completed
DME/DME:	Completed - No Critical DMEs
Name:	Robert CTR Ellis
Project File:	C:\Users\Robert CTR Ellis\Desktop\KORD DME Screens\KORD STAR MADII FIVE 20190920 DME.tgs
Output File:	C:\Users\Robert CTR Ellis\Desktop\KORD DME Screens\KORD [IFPA] MADII5 20190923_1219 CDT\SOOLU_TONIE\KORD MADII5 RNAV STAR SOOLU TONIE 20190923_1219 CDT.pdf
Procedure Name:	MADII5
Software: DmeDmePlugin:	5.6.0
Date/Time:	09/23/2019 12:19 CDT
Databases:	DTED Level 0 MAX

Failures

No Failures

Warnings

No Warnings

Notes For Flight Check

None

Flight Plan

Name	Type	Lat/Lon	Altitude (ft)	VNAV Mode	Ground Speed (kts)	Turn Type	Leg Type
SOOLU	WP	N42° 11' 46.95", W088° 08' 51.70"	4000	VNAV	200	FLY_BY	TF
JORJO	WP	N41° 53' 04.14", W087° 59' 18.78"	4000	VNAV	200	FLY_BY	TF
MONKZ	WP	N41° 53' 03.59", W087° 48' 06.47"	4000	VNAV	200	FLY_BY	TF
TONIE	WP	N41° 53' 01.37", W087° 29' 26.75"	4000	VNAV	200	FLY_OVER	TF

Flyability

Flight Type:	RNAV_STAR
Selected Airport:	KORD [IFPA]
Climb Gradient:	None assigned
Speeds:	200 Ground Speed to 11000 FT
	240 Ground Speed to 18000 FT
	260 Ground Speed to 24000 FT
	340 Ground Speed above 24000 FT
Descent During a Turn:	Allowed
VNAV Mode:	Flight Plan

DME DME Assessment Results for MADII5 path SOOLU_TONIE

DME/DME	
RNP:	RNP 2
Flight Mode:	Manual
Line of Sight (DTED Level 0 Max):	Evaluated
Inertial Drift:	Enabled
Initial Drift:	0.558 NM
INS Drift Rate:	8.0 NM/Hour
Range Mode:	OSV
RNP Edges:	Evaluated
Min DME Range:	3.0 NM
DME Types:	DME, VOR-DME, VORTAC
DME Include Angles:	30 to 150
Critical DMEs:	Allowed
DoD Facilities:	Not included
Foreign Facilities:	Not included
High DMEs:	Included
Low DMEs:	Included
Terminal DMEs:	Included
Flight Check DMEs:	Not selected
Higher Altitudes:	Not Evaluated
Near Maximum Altitude:	Not Evaluated
Automatic ESVs:	Enabled
Disabled DMEs:	None

DME/DME (Continued)										
DMEs Used										
#	Name	Lat/Lon	MAGVAR	Range	Type	Source	Critical	Status	Time	Distance
1	OBK	N42° 13' 16.96", W087° 57' 05.83"	2.0 W	130	H	IFPA	NO	Enabled	93.5 %	93.4 %
2	JOT	N41° 32' 47.11", W088° 19' 06.28"	2.0 E	130	H	IFPA	NO	Enabled	77.4 %	77.4 %
3	DPA	N41° 53' 25.30", W088° 21' 00.62"	2.0 E	40	L	IFPA	NO	Enabled	95.9 %	95.9 %
4	CGT	N41° 30' 36.02", W087° 34' 17.57"	2.0 E	40	L	IFPA	NO	Enabled	76.3 %	76.3 %
5	GCO	N41° 59' 38.72", W087° 54' 08.38"	0.0 E	40	L	IFPA	NO	Enabled	62.7 %	62.6 %
6	EON	N41° 16' 10.68", W087° 47' 27.79"	2.0 E	40	L	IFPA	NO	Enabled	3.1 %	3.1 %

Flight Check DME Selection						
Distance [NM]	Selected DMEs					Alternate
0.0	DPA	GCO	OBK			
2.6	DPA	GCO	OBK	JOT		
7.3						
9.0	JOT	DPA				
10.0	CGT	DPA	OBK	JOT		
17.6	CGT	GCO	DPA	OBK	JOT	
18.0	DPA	OBK	JOT	CGT		
18.7	DPA	OBK	EON	JOT	CGT	
20.1	DPA	OBK	JOT	CGT	GCO	
21.3	DPA	OBK	JOT	CGT		
25.4	DPA	OBK	GCO	JOT	CGT	
37.1	CGT	DPA	GCO	OBK		

Inertial Drift Segments			
#	Start Location	End Location	Length [NM]
1	N42° 04' 56.49", W088° 05' 21.56"	N42° 03' 23.19", W088° 04' 33.91"	1.6632
2	N44° 16' 25.52", W087° 09' 00.87"	N44° 10' 25.78", W087° 31' 56.61"	17.4931

DME DME Assessment Results for MADII5 path SOOLU_TONIE

Available DMEs by Waypoints

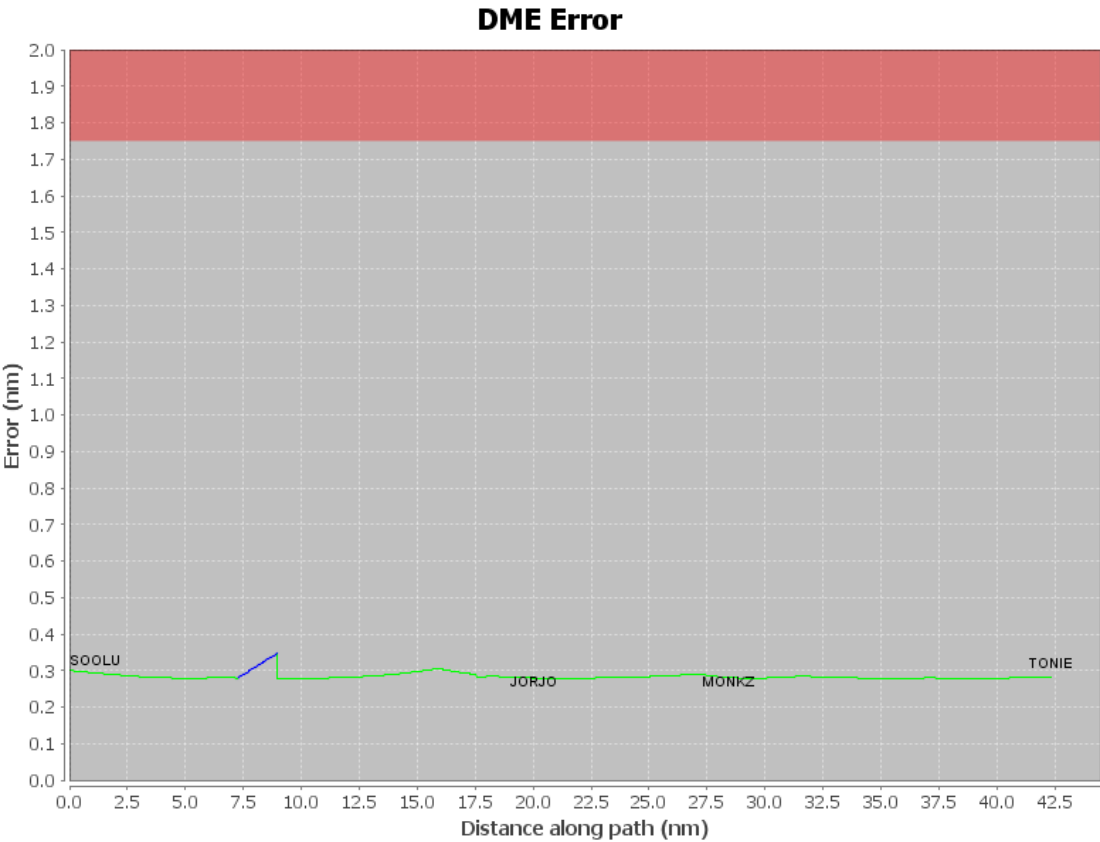
Waypoint Before	Waypoint After	DME List
SOOLU	JORJO	CGT, GCO, DPA, EON, OBK, JOT
JORJO	MONKZ	CGT, GCO, DPA, OBK, JOT
MONKZ	TONIE	CGT, GCO, DPA, OBK, JOT

User Data Files

#	File Name
1	New Analysis.udt

User DMEs

#	Name	Lat/Lon	MAGVAR	Range	Elevation [ft]	Frequency	Replaces	Status
1	UDT ESV OBK OBK [IFPA]	N42° 13' 16.96", W087° 57' 05.83"	2.0 W	130	707	113.0	UDT ESV OBK	
ESV:		Bearing [True]: 349.0° to 7.0° Bearing [Mag]: 351.0° to 9.0°				Arc Distance: Out to 65.0 NM Altitude: 5000.0 to 16000.0 ft		
2	UDT ESV AUW AUW [IFPA]	N44° 50' 48.40", W089° 35' 11.68"	2.0 E	40	1230.3	111.6	UDT ESV AUW	
ESV:		Bearing [True]: 88.0° to 104.0° Bearing [Mag]: 86.0° to 102.0°				Arc Distance: Out to 86.0 NM Altitude: 8900.0 to 16000.0 ft		
3	UDT ESV OSH OSH [IFPA]	N43° 59' 25.56", W088° 33' 21.36"	2.0 E	40	787.4	111.8	UDT ESV OSH	
ESV:		Bearing [True]: 121.0° to 163.0° Bearing [Mag]: 119.0° to 161.0°				Arc Distance: Out to 63.0 NM Altitude: 5000.0 to 17000.0 ft		
4	UDT ESV GRB GRB [IFPA]	N44° 33' 18.58", W088° 11' 41.49"	1.0 E	130	766	115.5	UDT ESV GRB	
ESV:		Bearing [True]: 159.0° to 170.0° Bearing [Mag]: 158.0° to 169.0°				Arc Distance: Out to 65.0 NM Altitude: 4900.0 to 16000.0 ft		
5	UDT ESV BAE BAE [IFPA]	N43° 07' 00.67", W088° 17' 03.64"	2.0 E	130	1069	116.4	UDT ESV BAE	
ESV:		Bearing [True]: 12.0° to 38.0° Bearing [Mag]: 10.0° to 36.0°				Arc Distance: Out to 89.0 NM Altitude: 8900.0 to 20000.0 ft		



DME DME Assessment Results for MADII5 path SOOLU_TONIE

Graphic Depiction 1

