

Flight Procedures Cover Page	Task Action: P-NOTAM	Task Type: IAP	Estimated Chart Date: 05/16/2024	APWS Task ID: A9910FF5635D4E2BA4E81AE9B3B171EF	APWS Project ID: E538DFC06FAF421E89FDCFEA992C329D
Procedure: ILS OR LOC RWY 6 AMDT 2D		Enroute: NO	Specialist: Boone-walt, Rose		Agreement Number:
Airport ID: KMJX			Airport City: TOMS RIVER		State: NJ
Facility ID:	Facility Type:	Flight Inspection Remark Type:			
<div>Procedure Comments: Processed IAW Technical Support Group (AJF-17) Memo dated 07/07/2021, Subject: Guidance for Procedural Changes Requiring Flight Inspection/Validation CONTACT: DAVID M. DANNER AJV-A421 LEAD: 405.954.5077</div> <div>QUALITY 15 CHECKED</div> <div>QUALITY 18 CHECKED</div>					

LOC I-MJX

109.9

APP CRS

063°

Rwy Idg

5835

TDZE

81

Apt Elev

81

OLD

ILS or LOC RWY 6

OCEAN COUNTY (MJX)

▼

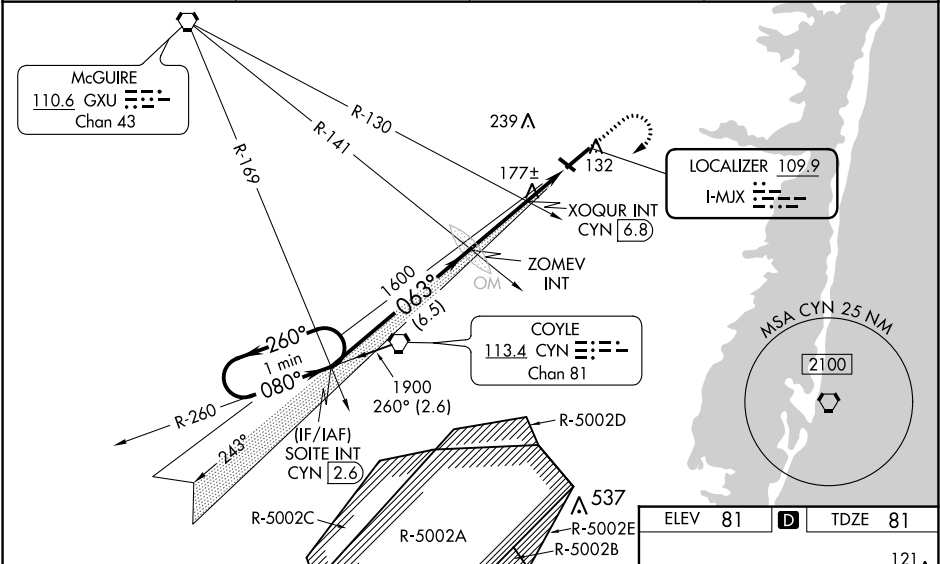
▲ NA

Circling Rwy 14, 32 NA at night. Inop table does not apply to S-ILS 6. For inop MALSR, increase S-LOC 6 Cats A/B and S-LOC 6 XOQUR Fix minimums Cats A/B visibility to 1. When local altimeter setting not received, use Mc Guire Fld (Joint Base Mc Guire Dix Lakehurst) altimeter setting and increase all DA 41 feet and all MDA 60 feet; increase S-LOC 6 Cats C/D and Circling Cat C visibility ¾ mile, Cat D ¼ mile; increase XOQUR Fix minimums S-LOC 6 Cat C/D visibility ¾ mile and Circling Cat D ¼ mile. For inop MALSR when using Mc Guire Fld (Joint Base Mc Guire Dix Lakehurst) altimeter setting, increase S-ILS 6 all Cats visibility to ¾ and S-LOC 6 Cats A/B and S-LOC 6 XOQUR Fix minimums Cats A/B visibility to 1, Cats C/D visibility to 1 ¾. Helicopter visibility reduction below ¾ SM NA.

MALSR

MISSED APPROACH:
Climb to 600 then
climbing right turn to
1900 direct CYN
VORTAC then on
CYN R-260 to SOITE
INT/CYN 2.6 DME
and hold.

AWOS-3PT 119.875	MC GUIRE APP CON 126.475 363.8	GCO 121.725	UNICOM 122.7 (CTAF) 0
---------------------	-----------------------------------	----------------	--------------------------



*720 when using Joint Base Mc Guire Dix Lakehurst altimeter setting.

One Minute Holding Pattern

1900

260°

080°

063°

1600

6.5 NM

2.7 NM

1.9 NM

GS 3.00°

TCH 56

CATEGORY	A	B	C	D
S-ILS 6		331-¾	250 (300-¾)	
S-LOC 6	660-¾	579 (600-¾)	660-1¼	579 (600-1¼)
CIRCLING	660-1	579 (600-1)	660-1¾	700-2
			579 (600-1¾)	619 (700-2)
XOQUR FIX MINIMUMS (DUAL VOR RECEIVERS or DME REQUIRED)				
S-LOC 6	520-¾	439 (500-¾)	520-7/8	439 (500-7/8)
CIRCLING	520-1	560-1	580-1½	700-2
	439 (500-1)	479 (500-1)	499 (500-1½)	619 (700-2)

ELEV 81

TDZE 81

121

125

3592 X 75

5950 X 100

0.3% UP

063°

MIRL Rwy 14-32

HIRL Rwy 6-24

REIL Rwys 14, 24 and 32

FAF to MAP 4.6 NM

Knots	60	90	120	150	180
Min:Sec	4:36	3:04	2:18	1:50	1:32

OCEAN COUNTY (KMJX)
TOMS RIVER, NJ.
RNAV (GPS) RWY 24 AMDT 1
1:100,000

