


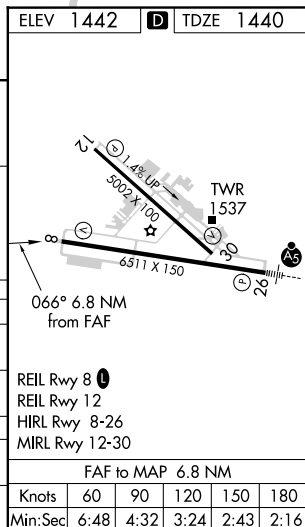
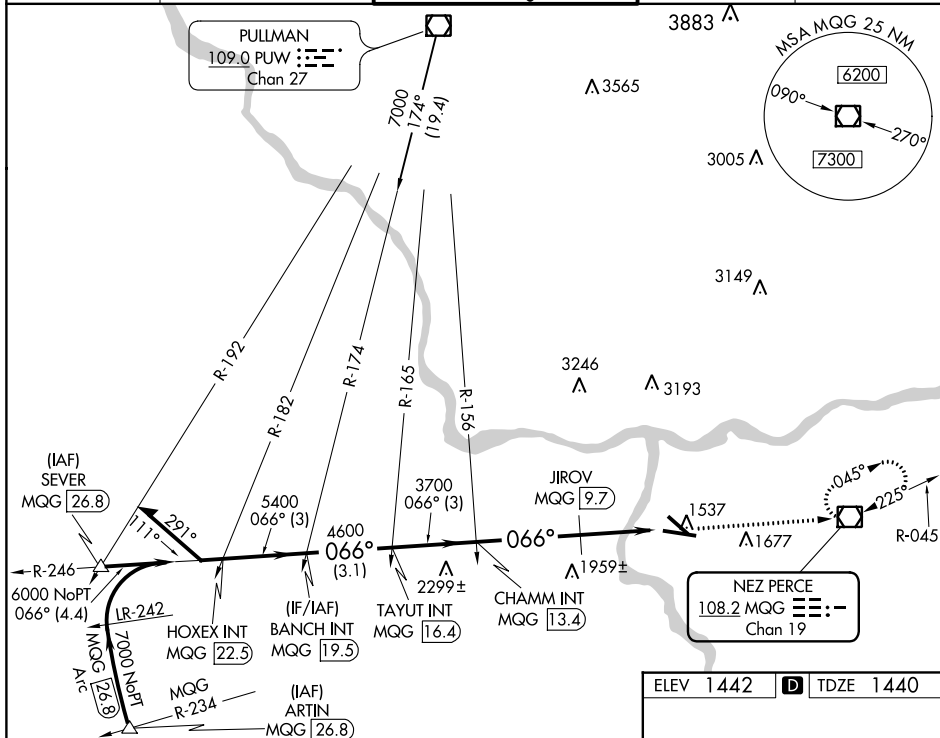
| | | | | | |
|--|--|--------------------------------|-------------------------------------|---|--|
| Flight Procedures Cover Page | Task Action: Cancellation | Task Type: IAP | Estimated Chart Date: 09/10/2020 | APWS Task ID: A7021ED7127C4E7A96631844B21A50BB | APWS Project ID: FBFCA3E921864C32AFCA428DA8C5CCEC |
| Procedure: VOR RWY 8 AMDT 6 | | Enroute: YES | Specialist: Barnett, Steven | | Agreement Number: |
| Airport ID: KLWS | Airport Name: LEWISTON-NEZ PERCE COUNTY | | Airport City: LEWISTON | | State: ID |
| Facility ID: | Facility Type: | Flight Inspection Remark Type: | | | |
| <div> <div>Procedure Comments:</div> <div>CONTACT: JOHN BORDY 405.954.0980</div> </div> <div>  </div> | | | | | |

18200

VOR RWY 8
LEWISTON-NEZ PERCE COUNTY (LWS)

MISSED APPROACH: Climb to 5000 direct MQG VOR/DME and hold, continue climb-in-hold to 5000.

| | | | | |
|-----------------|---------------------------------|--|------------------|------------------|
| ASOS 135.575 | SEATTLE CENTER 123.95 290.55 | LEWISTON TOWER ★ 119.4 (CTAF) 0 318.8 | GND CON 121.9 | UNICOM 122.95 |
|-----------------|---------------------------------|--|------------------|------------------|



46°22'N-117°01'W

LEWISTON-NEZ PERCE COUNTY (LWS)
VOR RWY 8