

Flight Procedures Cover Page	Task Action: FLIGHT CHECK	Task Type: IAP	Estimated Chart Date: 07/11/2024	APWS Task ID: A690EF9AF67044E0BAB1FB096C7F5C62	APWS Project ID: F4E0054A04CD4E1A961CBDFD3AB2870E
Procedure: ILS OR LOC RWY 21 ORIG		Enroute: NO	Specialist: Young, Silvia		Agreement Number:
Airport ID: KLUK			Airport City: CINCINNATI		State: OH
Facility ID: LUK	Facility Type: ILS	Flight Inspection Remark Type: New FC Slot			
<div>Procedure Comments:</div> <div>PENDING DATA USED FOR KLUK AIRPORT AND RWYS.</div> <div>CONTACT CASIMIR TABAKA 405.202.7857</div> <div><div>QUALITY 33 CHECKED</div><div>QUALITY 10 CHECKED</div></div>					

LOC/DME I-LUK 110.9 Chan 46	APP CRS 205°	Rwy Idg 6101 TDZE 475 Apt Elev 482
---	------------------------	---

ILS or LOC RWY 21
CINCINNATI MUNI/LUNKEN FLD (LUK)

DME required.

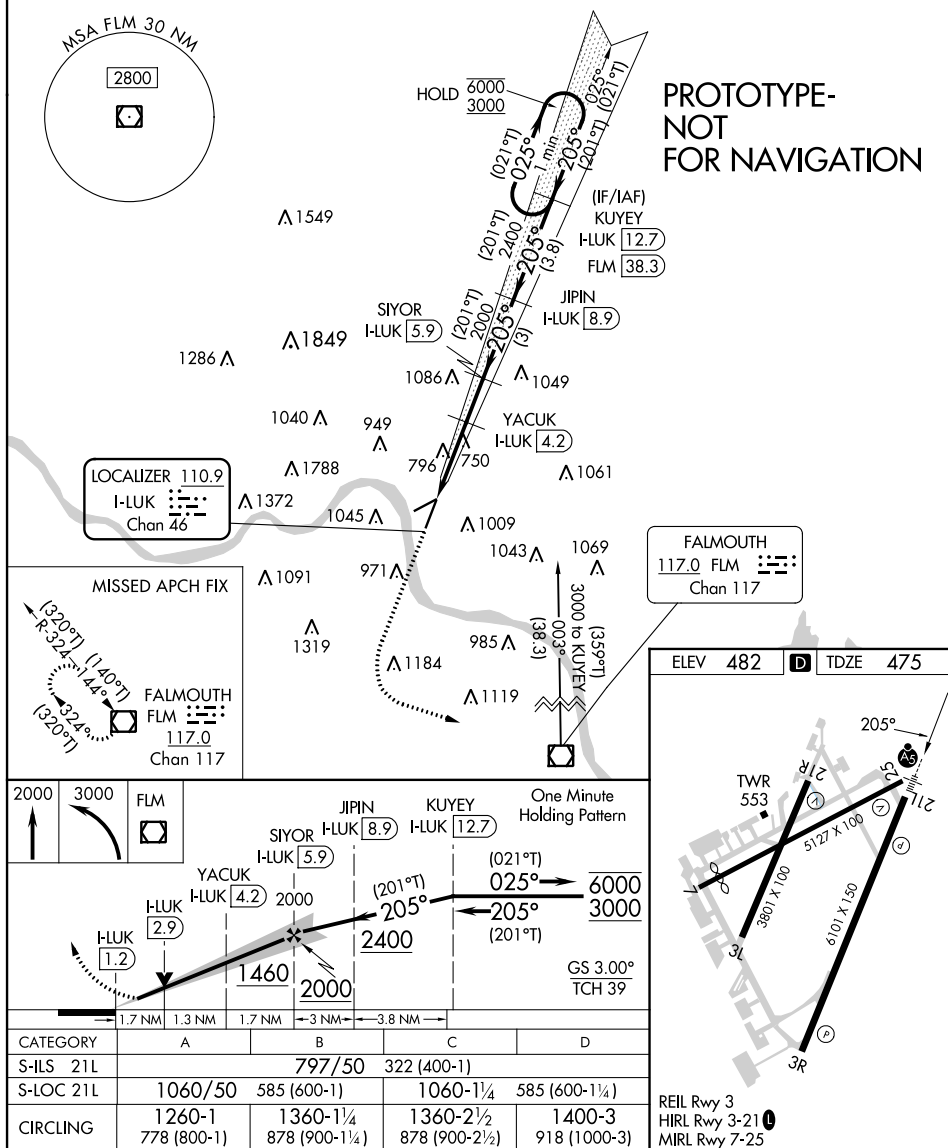
T Rwy 21 helicopter visibility reduction below RVR 4000 NA. Circling Rwy 7 NA
A at night. Circling NA for Cat D north of Rwy 7-25. Inop table does not apply to
S-ILS 21 all Cats and S-LOC 21 Cats A and B.

MALSR



MISSED APPROACH: Climb to 2000 then climbing left turn to 3000 direct FLM VOR/DME and hold.

ATIS 123.6	CINCINNATI APP CON 121.0 254.25	LUNKEN TOWER ★ 118.7 (CTAF) 0 257.8	GND CON 121.9	CLNC DEL 121.9	CLNC DEL 124.9 (when twr closed)	UNICOM 122.95
----------------------	---	---	-------------------------	--------------------------	---	-------------------------



KLUK
CINCINNATI MUNI/LUNKEN FLD
CINCINNATI, OH
ILS OR LOC RWY 21 ORIG
ILS FINAL
1:100,000

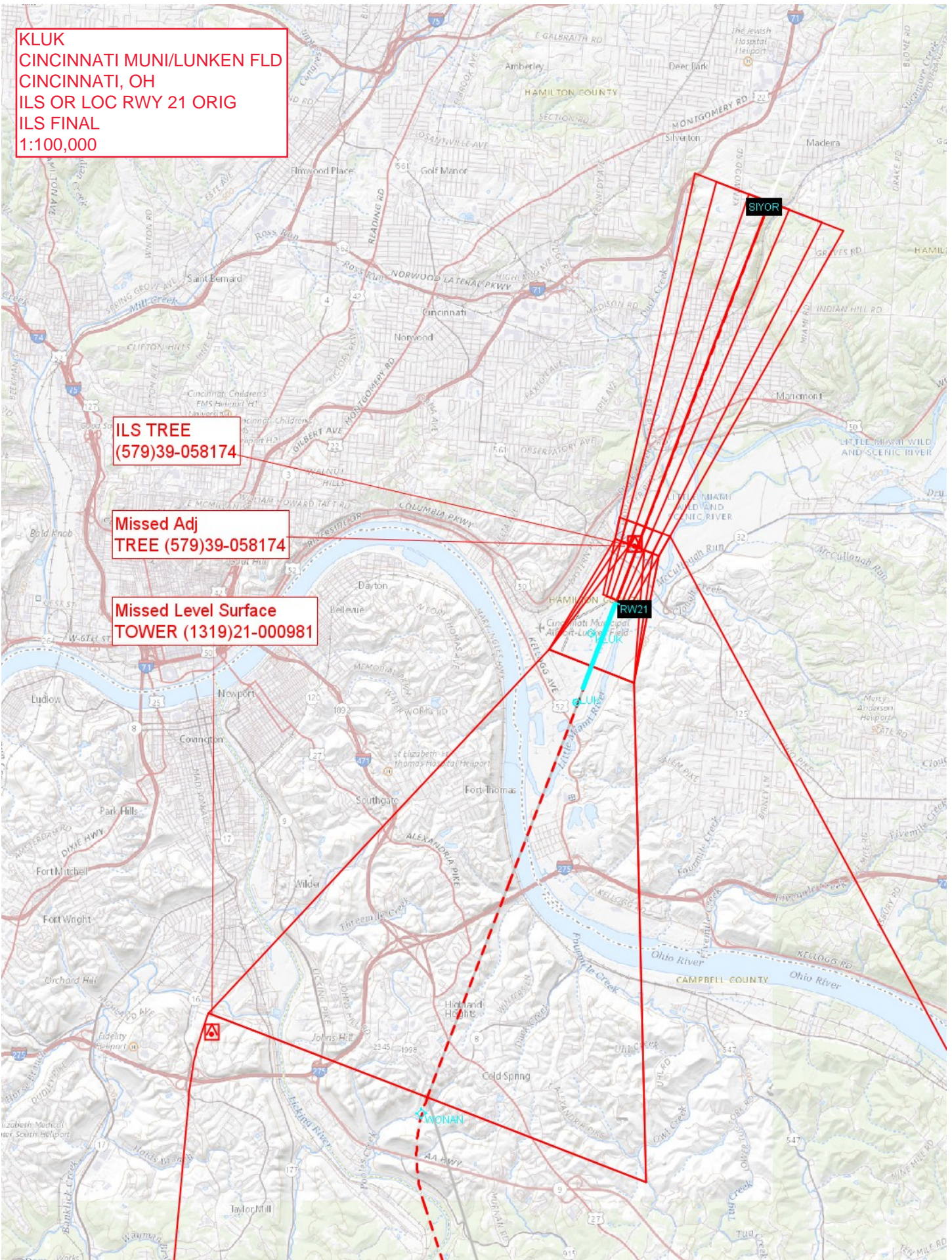
ILS TREE
(579)39-058174

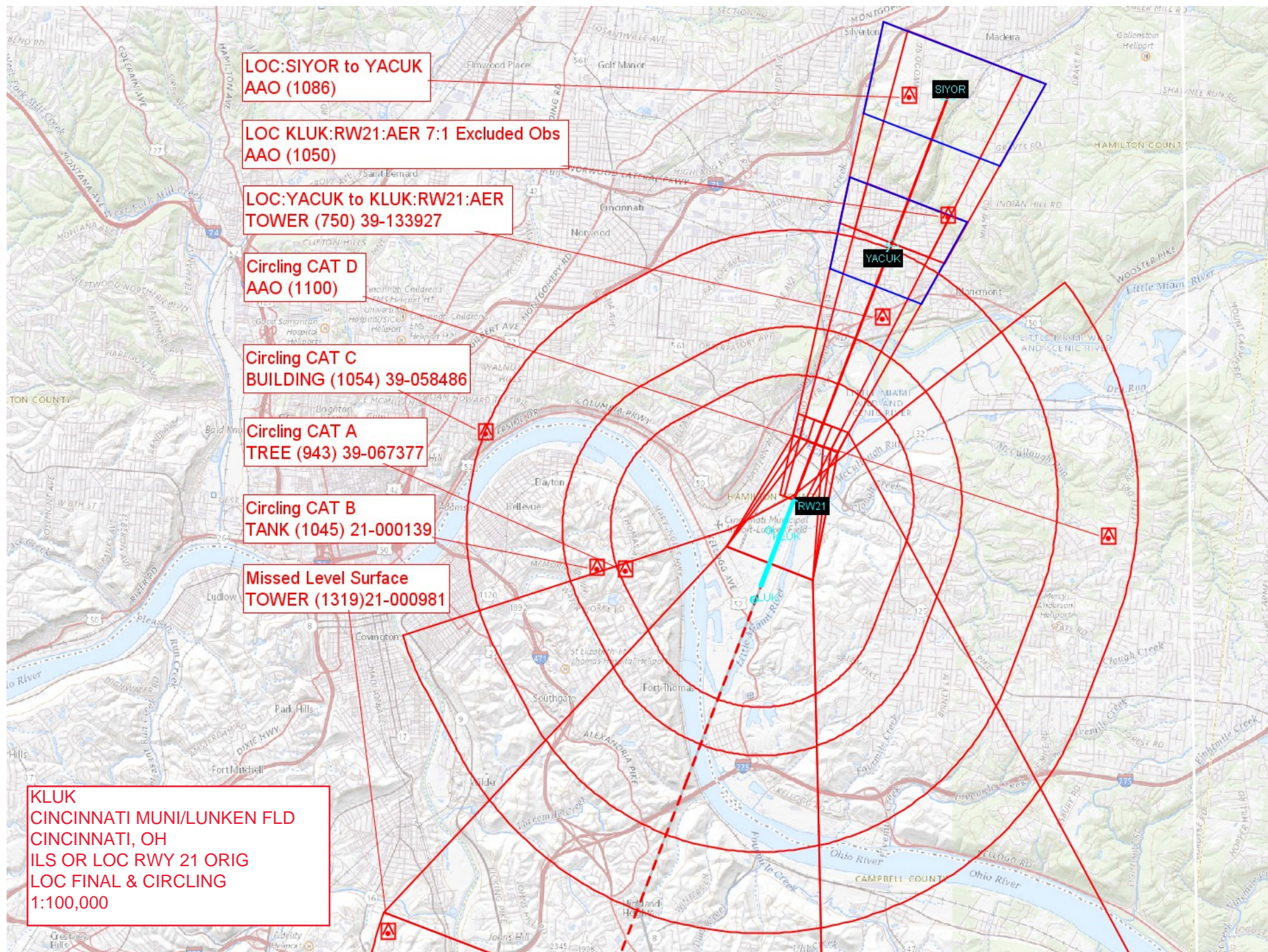
Missed Adj
TREE (579)39-058174

Missed Level Surface
TOWER (1319)21-000981

SIYOR

RW21





KLUK
CINCINNATI MUNI/LUNKEN FLD
CINCINNATI, OH
ILS OR LOC RWY 21 ORIG
FEEDER, HIL, IF, LOC FINAL, MA & HOLDING
1:500,000

KUYEY HIL
TOWER (1568) 39-000020

KUYEY to JIPIN
TOWER (1245) 39-004435

JIPIN to SIYOR
AAO (1086)

LOC:SIYOR to YACUK
AAO (1086)

LOC KLUK:RW21:AER 7:1 Excluded Obs
AAO (1050)

LOC:YACUK to KLUK:RW21:AER
TOWER (750) 39-133927

Missed Level Surface
TOWER (1319)21-000981

FLM:VOR/DME to KUYEY
TOWER (1213) 21-001796

FLM Holding
TOWER (1440) 21-001033

