

Flight Procedures Cover Page	Task Action: P-NOTAM	Task Type: IAP	Estimated Chart Date: 05/20/2021	APWS Task ID: A5F69DC654F747C4A6451C47C7B80219	APWS Project ID: 2F71A49FBD4743358EA98632AED4BDCF
Procedure: VOR RWY 5 AMDT 22A		Enroute: NO	Specialist: Donkor, Kweku		Agreement Number:
Airport ID: KCRE			Airport City: NORTH MYRTLE BEACH		State: SC
Facility ID:	Facility Type:	Flight Inspection Remark Type:			
<p>Procedure Comments: P-NOTAM.</p> <p>THIS CANCELS FDC 0/5586.</p> <p>ORDER 8260.3, CHAPTER 2, NEW CIRCLING CRITERIA APPLIED.</p> <p>CONTACT: LONNIE EVERHART 405-954-4576/DAVID TEFFETELLER 202-267-5177.</p>					



VORTAC CRE
114.4
Chan **91**

APP CRS
043°

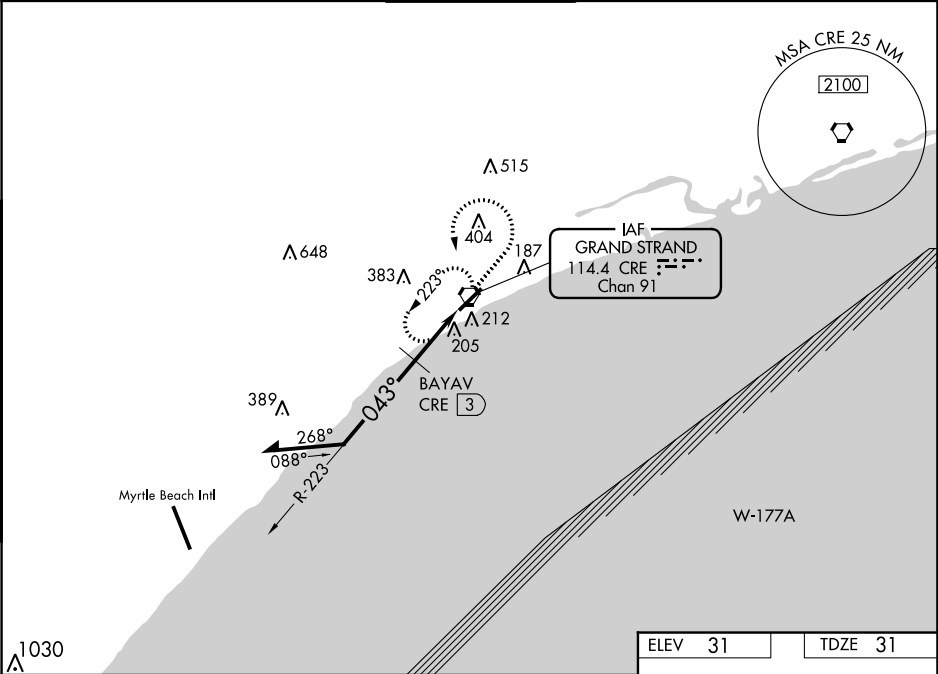
Rwy Idg **5997**
TDZE **31**
Apt Elev **31**

VOR RWY 5
GRAND STRAND (CRE)

⚠ Visibility reduction by helicopters NA. When local altimeter setting not received use Myrtle Beach Intl altimeter setting and increase all MDA 40 feet; increase S-5 Cat C/D and Circling Cat C visibility ¼ mile. VDP NA with Myrtle Beach Intl altimeter setting.

MISSED APPROACH: Climb to 2000 then left turn direct CRE VORTAC and hold.

ATIS 119.625	MYRTLE BEACH APP CON ★ 119.2 350.3	STRAND TOWER ★ 124.6 (CTAF) 0 257.6	GND CON 121.8 257.6	UNICOM 122.95
------------------------	--	---	-------------------------------	-------------------------



Remain within 10 NM

223°
1700
043°
*700

CRE VORTAC

2000

CRE

*740 when using Myrtle Beach Intl altimeter setting.

CRE 1.8

1.2 1.2 0.6

CATEGORY	A	B	C	D
S-5	700-1	669 (700-1)	700-1¾ 669 (700-1¾)	700-2 669 (700-2)
CIRCLING	700-1	669 (700-1)	700-1¾ 669 (700-1¾)	720-2¼ 689 (700-2¼)
BAYAV FIX MINIMUMS				
S-5	460-1	429 (500-1)	460-1¼ 429 (500-1¼)	460-1½ 429 (500-1½)
CIRCLING	520-1	489 (500-1)	520-1½ 489 (500-1½)	720-2¼ 689 (700-2¼)

043° to VORTAC

5997 X 100

TWR 107

110

REIL Rwy 5 0

HIRL Rwy 5-23 0



Airport ID KCRE
Apt Name GRAND STRAND
City CLOQUET
State SC
Proc ID VOR RWY 5
Amdt 22A
Scale 1:100,000
CIRCLING

CIRC C/D
404 TOWER

CIRC A/B
220 BLDG

