

Flight Procedures Cover Page	Task Action: P-NOTAM	Task Type: IAP	Estimated Chart Date: 11/04/2021	APWS Task ID: A549DC238EFD4F87AA17D881FC6ED3F7	APWS Project ID: 13641233EA8646158BFF8FDC819042B8
Procedure: LOC RWY 5 AMDT 0B		Enroute: NO	Specialist: Lafferty, James		Agreement Number:
Airport ID: KHRJ			Airport City: ERWIN		State: NC
Facility ID:	Facility Type:	Flight Inspection Remark Type:			
<p>Procedure Comments:</p> <p>P-NOTAM</p> <p>This Cancels FDC 0/8974</p> <p>Order 8260.3, chapter 2, New Circling Criteria Applied</p> <p>Contact Dave Teffeteller at 202-267-5177</p>					



ERWIN, NORTH CAROLINA

OLD

18144

LOC/DME I-HRJ <b>108.35</b> Chan 20(Y)	APP CRS <b>048°</b>	Rwy Idg TDZE <b>195</b> Apt Elev <b>202</b>	<b>5000</b>
--	------------------------	---	-------------

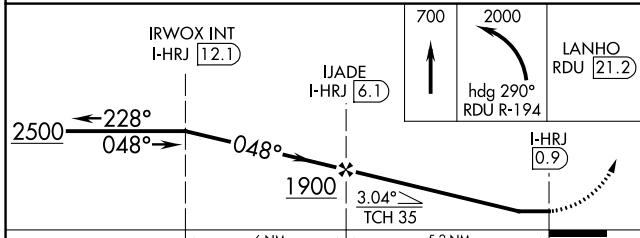
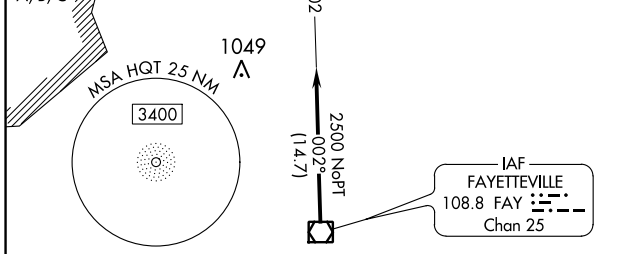
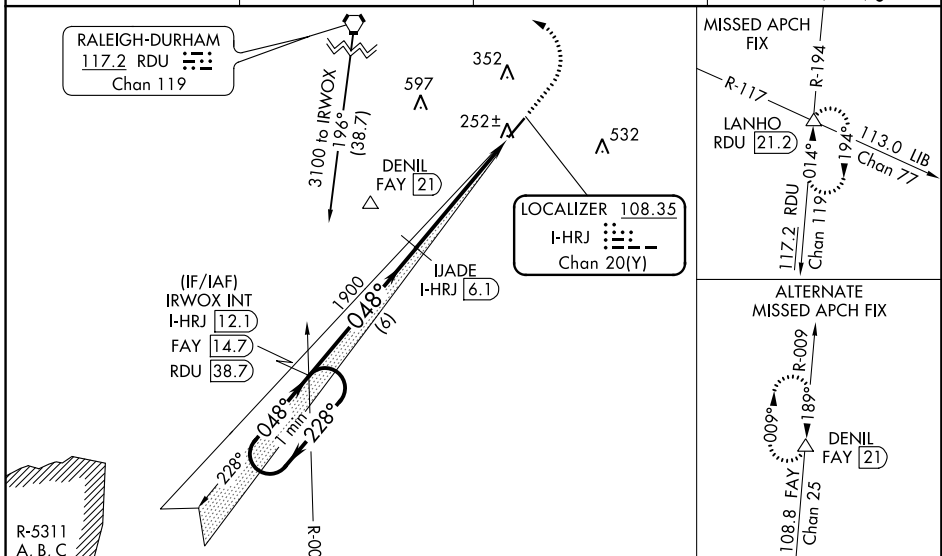
LOC RWY 5  
HARNETT RGNL JETPORT (HRJ)

DME required.

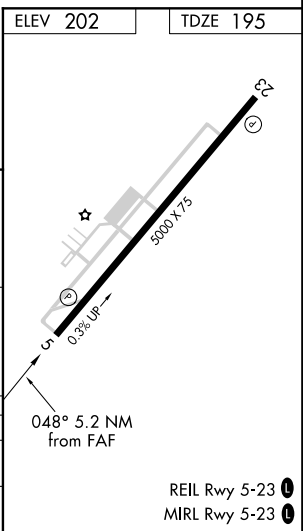
▼ Rwy 5 helicopter visibility reduction below 1 SM NA. When local altimeter setting not received, use Smithfield altimeter setting and increase all MDA 60 feet.

MISSED APPROACH: Climb to 700 then climbing left turn to 2000 on heading 290° and RDU R-194 to LANHO INT/RDU 21.2 DME and hold.

AWOS-3 <b>119.025</b>	FAYETTEVILLE APP CON <b>125.175 285.575</b>	GCO <b>135.075</b>	UNICOM <b>122.7 (CTAF) 0</b>
--------------------------	--	-----------------------	---------------------------------



CATEGORY	A	B	C	D
S-5	520-1	325 (400-1)		NA
CIRCLING	600-1 398 (400-1)	660-1 458 (500-1)	720-1½ 518 (600-1½)	NA



ERWIN, NORTH CAROLINA  
Orig-A 24MAY18

35°23'N-78°44'W

HARNETT RGNL JETPORT (HRJ)  
LOC RWY 5

SE-2, 24 MAY 2018 to 21 JUN 2018



