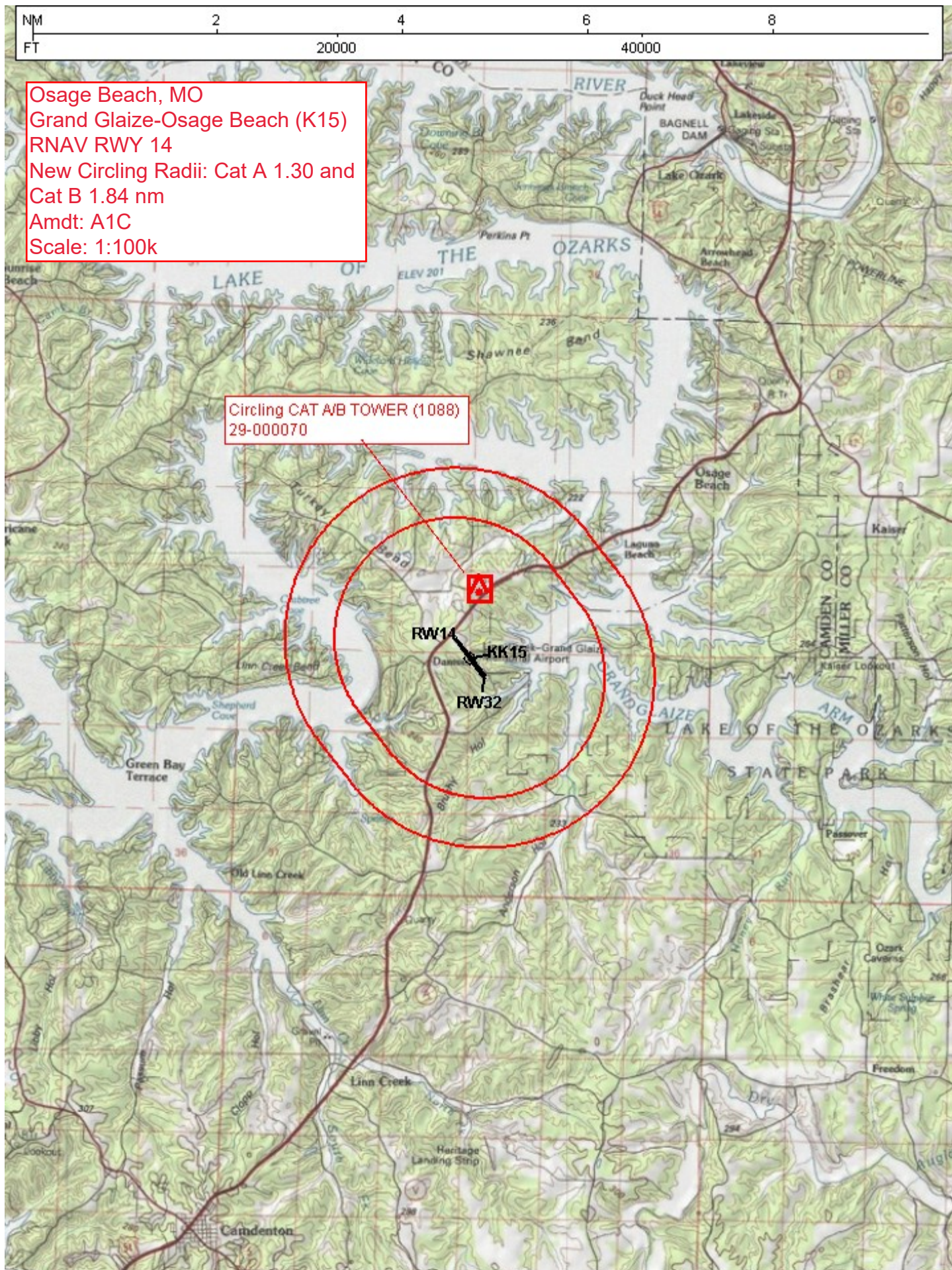


Flight Procedures Cover Page	Task Action: P-NOTAM	Task Type: IAP	Estimated Chart Date: 02/24/2022	APWS Task ID: A5339866E5FB42DF9BB2A6A63ADCA3AC	APWS Project ID: DAD5EEA552AB49DE8FCBAD090257FD15
Procedure: RNAV (GPS) RWY 14 AMDT 1C		Enroute: NO	Specialist: Marsh, Andre		Agreement Number:
Airport ID: K15			Airport City: OSAGE BEACH		State: MO
Facility ID:	Facility Type:	Flight Inspection Remark Type:			
<div>Procedure Comments: P-NOTAM CIRCLING RADII INCREASE JASON KRETSCHMER: 405-954-4019</div> <div><div>Digitally signed by JASON KRETSCHMER Jan 12, 2022</div><div><div>QUALITY 9 CHECKED</div><div>QUALITY 47 CHECKED</div></div></div>					



WAAS

CH **48932**

W14A

APP CRS

140°

Rwy Idg

3205

TDZE

876

Apt Elev

876

RNAV (GPS) RWY 14

GRAND GLAIZE-OSAGE BEACH (K15)

▼

NA

Use Kaiser Lake Ozark altimeter setting; when not received, use Camdenton altimeter setting and increase all MDA 40 feet. DME/DME RNP- 0.3 NA. Procedure NA at night. Helicopter visibility reduction below 1 SM NA.

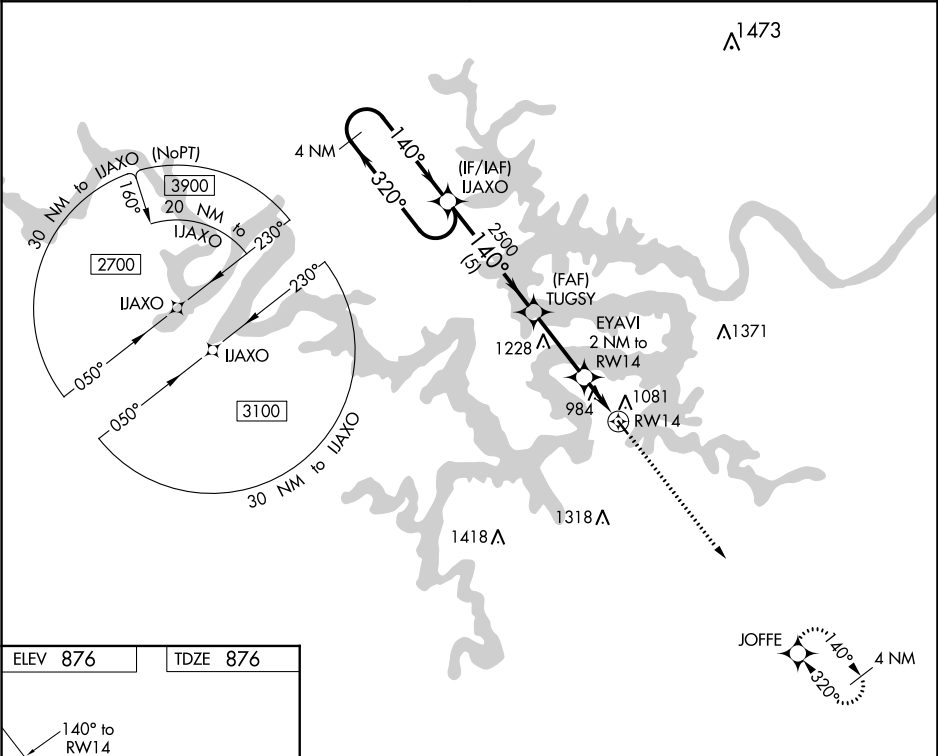
MISSED APPROACH: Climb to 2700 direct JOFFE and hold.

MIZZU APP CON

124.1 353.925

UNICOM

122.8 (CTAF) 0



ELEV 876

TDZE 876

140° to RW14

3205 X 60

0.6% UP

Visual Segment - Obstacles.

2700

JOFFE

4 NM Holding Pattern

2700

320°

140°

140°

2500

1540

RW14

5 NM

3 NM

2 NM

CATEGORY	A	B	C	D
LP MDA	1300-1	424 (500-1)	NA	
LNAV MDA	1360-1	484 (500-1)	NA	
CIRCLING	1400-1	524 (600-1)	NA	