



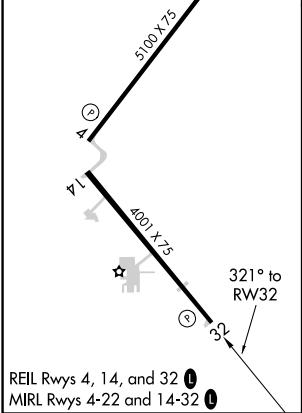
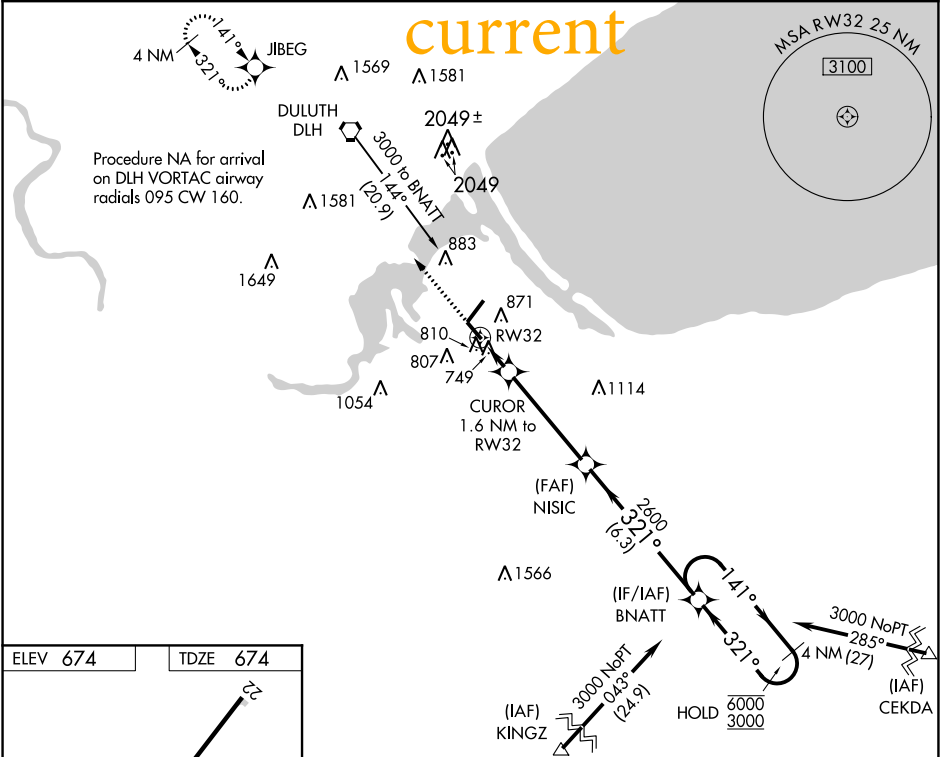
Flight Procedures Cover Page	Task Action: P-NOTAM	Task Type: IAP	Estimated Chart Date: 06/16/2022	APWS Task ID: A4C53BB7C3554C5FA537F85BD9FFAE37	APWS Project ID: 72969992B702423996A93CF6B55EFEAA
Procedure: RNAV (GPS) RWY 32 AMDT 0D		Enroute: NO	Specialist: Sickels, Dale		Agreement Number:
Airport ID: KSUW			Airport City: SUPERIOR		State: WI
Facility ID:	Facility Type:	Flight Inspection Remark Type:			
<p>Procedure Comments: Order 8260.3, Chapter 2, New Circling Criteria Applied.</p> <p>Contact Jason Kretschmer, AJV-A421, 405-954-4019</p> <p style="text-align: center;"><i>Digitally signed by</i> JASON KRETSCHMER Apr 15, 2022</p> <div style="text-align: right;">   </div>					

WAAS CH 72829 W32A	APP CRS 321°	Rwy Idg TDZE Apt Elev	4001 674 674
--	------------------------	-----------------------------	---

RNAV (GPS) RWY 32

RICHARD I BONG (SUW)

RNP APCH.		MISSED APPROACH: Climb to 3100 direct JIBEG and hold.	
Rwy 32 helicopter visibility reduction below ¾ SM NA.			
AWOS-3 120.35	DULUTH APP CON 125.45 233.7	CLNC DEL 124.8	UNICOM 122.7 (CTAF) 0



3100 JIBEG		VGSI and descent angles not coincident (VGSI Angle 4.00/TCH 41).		4 NM Holding Pattern	
CUROR 1.6 NM to RW32		NISIC		BNATT	
0.9 NM to RW32		1220		2600	
0.9 NM to RW32		4.3 NM		6.3 NM	
CATEGORY	A	B	C	D	
LP MDA	1000-1 326 (400-1)				
LNAV MDA	1060-1	386 (400-1)	1060-1½	386 (400-1½)	
CIRCLING	1180-1	506 (600-1)	1180-1½	506 (600-1½)	1240-2 566 (600-2)

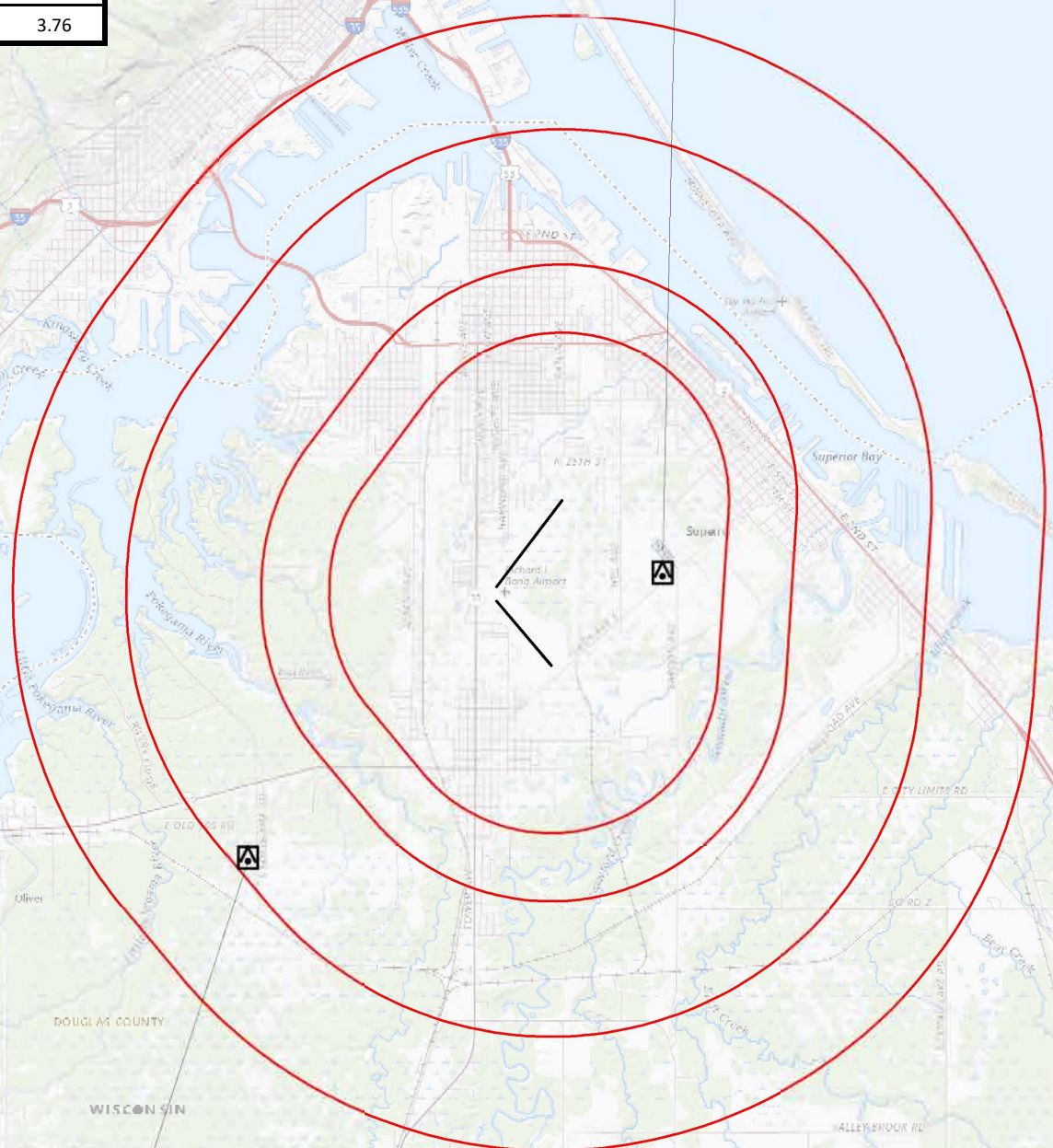
EC-3, 27 JAN 2022 to 24 FEB 2022

EC-3, 27 JAN 2022 to 24 FEB 2022

AIRPORT ID	KSUW
AIRPORT NAME	RICHARD I BONG
CITY	SUPERIOR
STATE	WI
Proc ID:	RNAV (GPS) RWY 32
Amdt #	ORIG-D
Scale	1:100,000

NEW RADII	
CAT A	1.30
CAT B	1.83
CAT C	2.87
CAT D	3.76

Circling CAT A/B STACK (870)
55-000831



Circling CAT C/D TOWER (1046)
55-000022