

PRB RESULTS 5/2/24 (FAA)

Request Type: Approval

(BWI) BALTIMORE, MARYLAND, BALTIMORE/WASHINGTON INTL THURGOOD MARSHALL
ANTHM FOUR (RNAV) STAR <https://swims.faa.gov/Landing/Actionable/Edit/8655>

PRB Result: Recommend Approval

Request Type: Approval

(BWI) BALTIMORE, MARYLAND, BALTIMORE/WASHINGTON INTL THURGOOD MARSHALL
RAVNN SEVEN (RNAV) STAR <https://swims.faa.gov/Procedure/Edit/8656>

PRB Result: Recommend Approval

ADMINISTRATIVE NOTE:

1. FLIGHT CHECK FORM HAS RAVNN SIX NOT RAVNN SEVEN ON HEADER.
2. THE FIG TRANSITION KBWI LDG RWU 28 (RAVNN TO FHRST) DOES NOT ACCURATELY PORTRAY DIRECTION FROM RAVNN TO BMTTR.

Request Type: Approval

(BWI) BALTIMORE, MARYLAND, BALTIMORE/WASHINGTON INTL THURGOOD MARSHALL
TRISH FOUR (RNAV) STAR <https://swims.faa.gov/Procedure/Edit/8657>

PRB Result: Recommend Approval

Request Type: Approval

(U34) GREEN RIVER, UTAH, GREEN RIVER MUNI
RNAV (GPS) RWY 13, ORIG <https://swims.faa.gov/Procedure/Edit/8503>

PRB Result: Recommend Approval (Temp 5 years)

ADMINISTRATIVE NOTE:

1. AIRSPACE: NEW AIRSPACE REQUEST, 1000 FT WAS USED IN THE INTERMEDIATE LHARY TO RHIKI – 1000 FT POINT SHOULD BE IN THE INTERMEDIATE IAW 8260.19j, 5-2-4.C.(4)(B)1, THERE IS ONLY CLASS E AIRSPACE IN THIS AREA.

Request Type: Approval

(U34) GREEN RIVER, UTAH, GREEN RIVER MUNI
RNAV (GPS) RWY 31, ORIG <https://swims.faa.gov/Procedure/Edit/8504>

PRB Result: Recommend Approval (Temp 5 years)

ADMINISTRATIVE NOTE:

1. AIRSPACE: NEW AIRSPACE REQUEST, 1000 FT WAS USED IN THE INTERMEDIATE LHARY TO RHIKI – 1000 FT POINT SHOULD BE IN THE INTERMEDIATE IAW 8260.19j, 5-2-4.C.(4)(B)1, THERE IS ONLY CLASS E AIRSPACE IN THIS AREA.

Request Type: Approval

(SDF) LOUISVILLE, KENTUCKY, LOUISVILLE MUHAMMAD ALI INTL
JMONY ONE (RNAV) STAR <https://swims.faa.gov/Procedure/Edit/8682>

PRB Result: Recommend Approval

Request Type: Approval

(SBA) SANTA BARBARA, CALIFORNIA, SANTA BARBARA MUNI
GAUCH THREE (RNAV) DEPARTURE <https://swims.faa.gov/Procedure/Edit/8709>

PRB Result: Approval Request to publish ceiling and visibility only (300-1) approved.

Request Type: Approval

(SBA) SANTA BARBARA, CALIFORNIA, SANTA BARBARA MUNI
MISHN FOUR (RNAV) DEPARTURE <https://swims.faa.gov/Procedure/Edit/8710>

PRB Result: Approval Request to publish ceiling and visibility only (300-1) approved.

ADMINISTRATIVE NOTE:

1. TOP ALTITUDE: SHOULD BE AT LEAST 10,000 FT BASED ON AT OR ABOVE RESTRICTION AT BOILE – IAW 8260.46j, 2-1-1.(F)

| | | | | | |
|--|------------------------------|---|-------------------------------------|---|--|
| Flight Procedures Cover Page | Task Action: FLIGHT CHECK | Task Type: SID | Estimated Chart Date: 09/05/2024 | APWS Task ID: A4BA8A7F0A384A12986A2065BEA41F94 | APWS Project ID: 5E30B637E0BC412DACF6BED1361C0BA3 |
| Procedure: SID GAUCH THREE (RNAV) SANTA BARBARA CA KSBA | | Enroute: YES | Specialist: Garrity, Michael | | Agreement Number: |
| Airport ID: KSBA | | | Airport City: SANTA BARBARA | | State: CA |
| Facility ID: | Facility Type: | Flight Inspection Remark Type: New FC Slot | | | |
| <div>Procedure Comments:</div> <div>ACTIVE DATA USED FOR KSBA AIRPORT AND RUNWAYS</div> <div>LOA(S): (1): PUBLISH CG GREATER THAN 500 FT/NM FOR RWY 15R</div> <div>CONTACT: ALLAN WILL, TEAM 2 SUBTEAM-C MANAGER, 405.954.6103</div> <div>05/07/24: THIS IS AN UPDATED COPY OF THE FORM DEVELOPED ON 01/24/24.</div> <div>1. TAKEOFF MINIMUMS: CHANGED RWY 15R FROM "300-1 OR STANDARD WITH MINIMUM CLIMB OF 1107 FT/NM TO 300" TO "300-1 WITH MINIMUM CLIMB OF 500 FT/NM TO 520".</div> <div>2. REMARKS: CHANGED "LETTER OF APPROVAL SUBMITTED FOR RWY 15R TAKEOFF OBSTACLE MITIGATION/PUBLICATION OF STAND ALONE CIG AND VIS" TO "AFS APPROVAL LETTER FOR STAND ALONE CIG AND VIS FOR RWY 15R".</div> <div>3. REMARKS: REMOVED "300 FOOT CGTA DOCUMENTED FOR RWY 15R BASED ON OBSTACLE CLEARANCE TO MITIGATE SEE-AND-AVOID AREA PENETRATION. TARGETS EVALUATION UTILIZES 400 FOOT CGTA TO ENSURE PROPER VI SEGMENT LENGTH".</div> <div><div>QUALITY 41 CHECKED</div><div>QUALITY 8 CHECKED</div></div> | | | | | |

| FIPC BASIC FORM | | | | | | |
|--|--|---------------------------|---|--|---|---|
| PROCEDURE: SID GAUCH THREE (RNAV) SANTA BARBARA CA KSBA | | | AIRPORT NAME: SANTA BARBARA MUNI | | AIRPORT ID: KSBA | SPECIAL CONTROL NO: SG-05-147-24 |
| FAC ID: GAUCH3 | | CITY: SANTA BARBARA | | | ST: CA | ORIG CHART DATE: 09/05/2024 |
| DFL TYPE: PROC/D | THIRD PARTY: <input type="checkbox"/> YES | EST. TIME ON SITE: 1.0 | REIMB. NUMBER: | PTS TASK ID: A4BA8A7F0A384A12986A2065BEA41F94 | | |
| PREFLIGHT NOTES | | | | | | |
| REVIEWER: | | | | | DATE: | |
| COMMENTS: | | | | | CHECK ONE: | |
| | | | | | <input type="checkbox"/> FLT CK REQ <input type="checkbox"/> NFCR <input type="checkbox"/> REJECT | |
| | | | | | | YES |
| | | | | | CPV COMPLETE? | X |
| PROCEDURE RESULTS | | | | | | |
| INSPECTION DATE: 10/11/2024 | CREW #: VN235 | N #: N72 | INSTRUMENT PROCEDURE STATUS: <input checked="" type="checkbox"/> SAT <input type="checkbox"/> SAT W/CHANGES <input type="checkbox"/> UNSAT | | ARINC CODING: <input checked="" type="checkbox"/> SAT <input type="checkbox"/> SAT/GOLD <input type="checkbox"/> UNSAT | |
| FLIGHT INSPECTOR SIGNATURE: thomas e molokie @ 10/11/2024 16:16 | | | PRINTED NAME: MOLOKIE, THOMAS EDWARD | | | NOTAM INITIATED? <input type="checkbox"/> YES <input checked="" type="checkbox"/> NO |
| FLIGHT INSPECTOR REMARKS: GAUCH3 Departure flown, satisfactory. No electronic data required per 8200.52A 13-10. | | | | | | |
| IN-FLIGHT OBSTACLE REPORT | | | | | | |
| OBSTRUCTION ID #: | COORDINATES OR LOCATION: | GNSS ALTITUDE (MSL): | BAROMETRIC ALTITUDE (MSL): | | HEIGHT ABOVE GROUND LEVEL: | |



Federal Aviation Administration

Memorandum

To: Doug Rodzon, Acting Manager, Flight Technologies and Procedures Division
THRU: Jim Rose, Acting Manager, Flight Procedures and Airspace Group

From: Lonnie Everhart, Manager, Instrument Flight Procedures Group

Subject: Approval Request: Santa Barbara Muni (KSBA), Santa Barbara, CA

GAUCH THREE DEPARTURE (RNAV)

The Flight Procedures and Airspace Group must approve a CG in excess of 500 ft/NM per FAAO 8260.46J, para 2-1-1d(2).

Rwy 15R: The TARGETs computed CG/CGTA required to mitigate a see-and-avoid area obstacle penetration is 1107 ft/NM to 211 ft MSL. Rwy 15R DER elevation is 11.0 ft MSL.

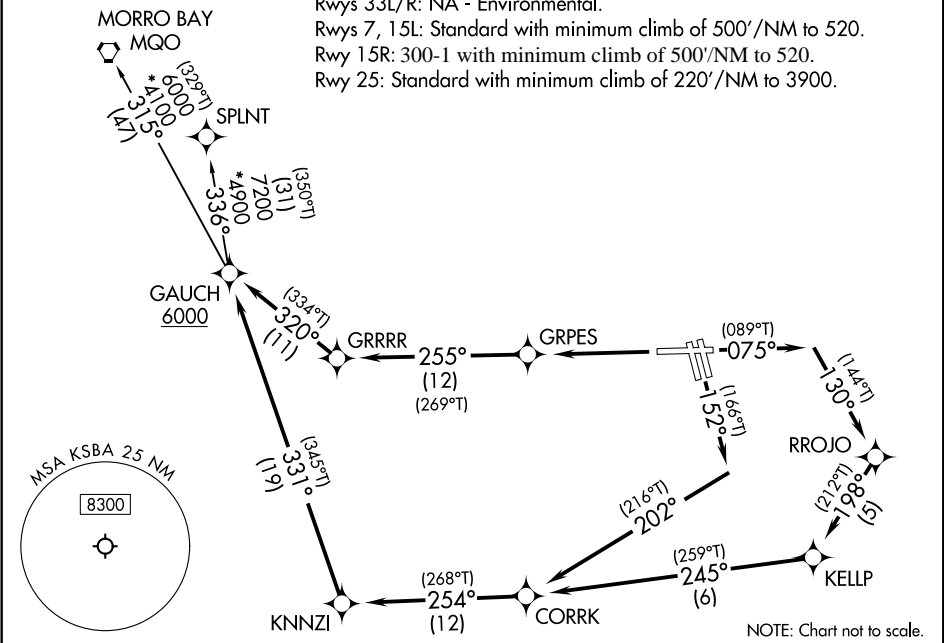
The obstacle requiring the CG/CGTA is 163 ft MSL TREE (06-289558) 342457.46N/1195022.72W AC 1A. The obstacle is located 0.2477 SM from DER (1097.9418 ft from DER along centerline/760.9281 ft to the right). The obstacle is 152 ft above DER elevation and penetrates the OEA by 93.3593 ft. The airport is not able to remove the obstacle currently.

Request approval to publish 1107 feet per NM to 300 for the Rwy 15R departure. Should this approval not be granted, request approval to accomplish this takeoff using a ceiling and visibility only requirement of 300 - 1.

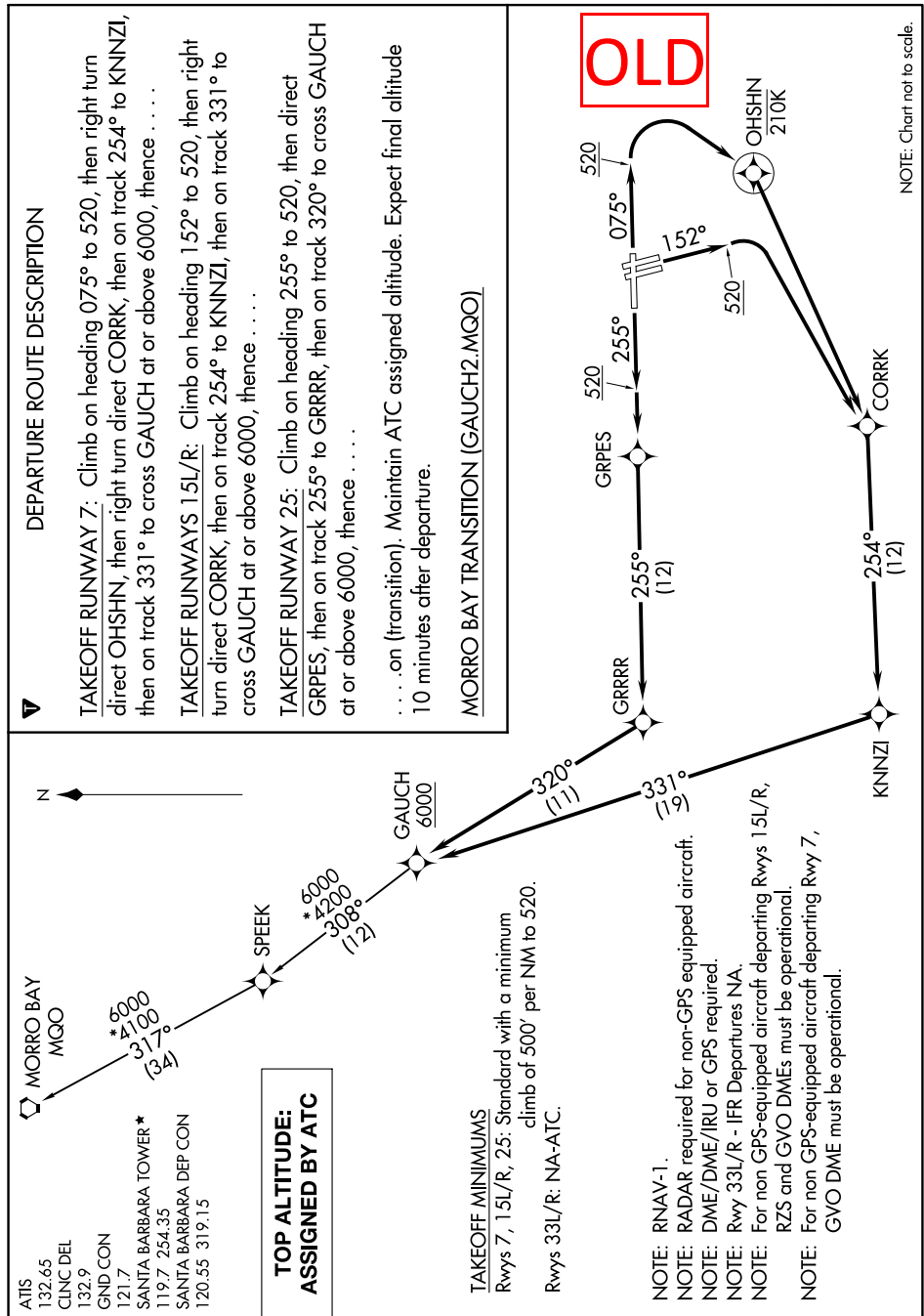
| | | |
|--|---|--|
| SANTA BARBARA DEP CON 120.55 319.15 ATIS 132.65 CLNC DEL 132.9 GND CON 121.7 SANTA BARBARA TOWER ★ 119.7 254.35 | RNAV 1 - DME/DME/IRU or GPS. RADAR required for non-GPS equipped aircraft. | TOP ALTITUDE: ASSIGNED BY ATC |
|--|---|--|

PROTOTYPE-NOT FOR NAVIGATION

TAKEOFF MINIMUMS
Rwys 33L/R: NA - Environmental.
Rwys 7, 15L: Standard with minimum climb of 500'/NM to 520.
Rwy 15R: 300-1 with minimum climb of 500'/NM to 520.
Rwy 25: Standard with minimum climb of 220'/NM to 3900.



| |
|--|
| <p>DEPARTURE ROUTE DESCRIPTION</p> <p><u>TAKEOFF RUNWAY 7:</u> Climb on heading 075° to intercept course 130° to RROJO, then on track 198° to KELLP, then on track 245° to CORRK, then on track 254° to KNNZI, then on track 331° to cross GAUCH at or above 6000, thence</p> <p><u>TAKEOFF RUNWAYS 15L/R:</u> Climb on heading 152° to intercept course 202° to CORRK, then on track 254° to KNNZI, then on track 331° to cross GAUCH at or above 6000, thence</p> <p><u>TAKEOFF RUNWAY 25:</u> Climb direct GRPES, then on track 255° to GRRRR, then on track 320° to cross GAUCH at or above 6000, thence</p> <p>. . . . on (transition). Maintain ATC assigned altitude. Expect final altitude 10 minutes after departure.</p> <p><u>MORRO BAY TRANSITION (GAUCH3.MQO)</u> <u>SPLNT TRANSITION (GAUCH3.SPLNT)</u></p> |
|--|



KSBA (SBA)
SANTA BARBARA MUNI
SANTA BARBARA, CA
GAUCH THREE (RNAV) SID

RWY 7
1:100,000

