

Flight Procedures Cover Page	Task Action: P-NOTAM	Task Type: IAP	Estimated Chart Date: 09/09/2021	APWS Task ID: A44A5E8B70224F6ABCE497A6F35B0666	APWS Project ID: 94AD6565E4BD467BA1B48018482FC802
Procedure: RNAV (GPS) RWY 19 AMDT 0E		Enroute: NO	Specialist: Miller, Ralph		Agreement Number:
Airport ID: KSGU			Airport City: ST GEORGE		State: UT
Facility ID:	Facility Type:	Flight Inspection Remark Type:			
<div>Procedure Comments:</div> <div>P-NOTAM.</div> <div>ORDER 8260.3, CHAPTER 2, NEW CIRCLING CRITERIA APPLIED</div> <div>ACTIVE DATA USED.</div> <div>CONTACT JASON KRETSCHMER, AJV-A421, 405-954-5077.</div> <div><div>Digitally signed by <b>JASON KRETSCHMER</b> Jul 20, 2021</div><div>QUALITY 47 CHECKED</div><div>QUALITY 38 CHECKED</div></div>					

ST GEORGE, UTAH

# OLD

L 546 (FA)

19171

APP CRS  
**198°**

Rwy ldg  
TDZE  
**2884**

Apt Elev  
**2884**

## RNAV (GPS) RWY 19

ST GEORGE RGNL (SGU)

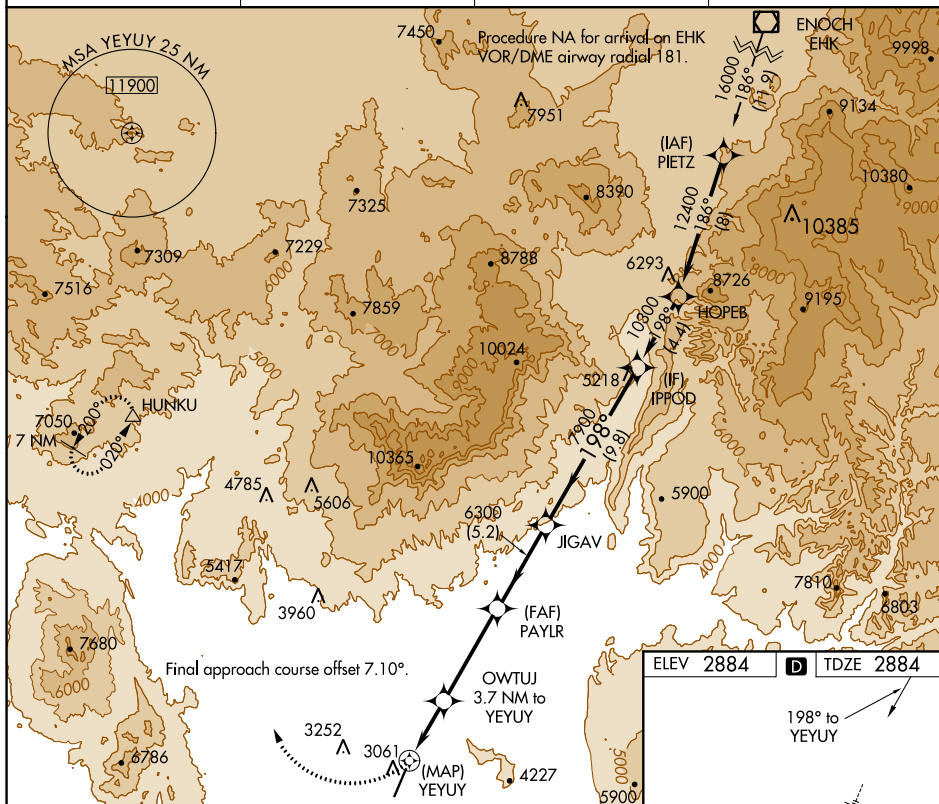
  -17°C	DME/DME RNP-0.3 NA.	 	MISSED APPROACH: Climbing right turn to 9800 direct HUNKU and hold, continue climb-in-hold to 9800.

AWOS-3PT  
**135.075**

LOS ANGELES CENTER  
**124.2 343.6**

CLNC DEL  
**133.3**

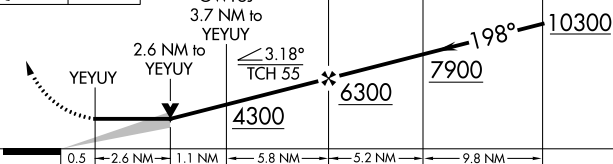
UNICOM  
**122.8 (CTAF)**



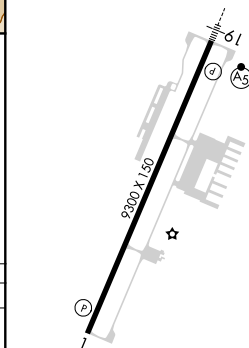
ELEV 2884

198° to  
YEYUY

9800 HUNKU



CATEGORY	A	B	C	D
RNAV MDA	3940- $\frac{3}{4}$ 1056 (1100- $\frac{3}{4}$ )	3940-1 1056 (1100-1)	3940-2 $\frac{1}{2}$ 1056 (1100-2 $\frac{1}{2}$ )	
CIRCLING	3940-1 $\frac{1}{4}$ 1056 (1100-1 $\frac{1}{4}$ )	3940-1 $\frac{1}{2}$ 1056 (1100-1 $\frac{1}{2}$ )	3940-3 1056 (1100-3)	



REIL Rwy 1  
HIRL Rwy 1-19

ST GEORGE, UTAH  
Orig-D 05JAN17

37°02'N-113°31'W

## RNAV (GPS) RWY 19

SW-4, 27 FEB 2020 to 26 MAR 2020

SW-4, 27 FEB 2020 to 26 MAR 2020



KSGU  
St George Rgnl  
St George, UT  
1:100k  
Circling - all procedures

