

Flight Procedures Cover Page	Task Action: P-NOTAM	Task Type: IAP	Estimated Chart Date: 05/20/2021	APWS Task ID: 3449312F23554E50BDD0D0C2A6C65DAB	APWS Project ID: 1DB9CC5AA359463690F8CAD571AC386B
Procedure: RNAV (GPS) RWY 22 AMDT 1B		Enroute: NO	Specialist: Lafferty, James		Agreement Number:
Airport ID: 0J4			Airport City: FLORALA		State: AL
Facility ID:	Facility Type:	Flight Inspection Remark Type:			
<p>Procedure Comments:</p> <p>P-NOTAM</p> <p>This Cancels FDC 9/9405</p> <p>Order 8260.3, chapter 2, New Circling Criteria Applied</p> <p>Contact Dave Teffeteller at 202-267-5177</p>					

QUALITY
45
CHECKED

QUALITY
26
CHECKED

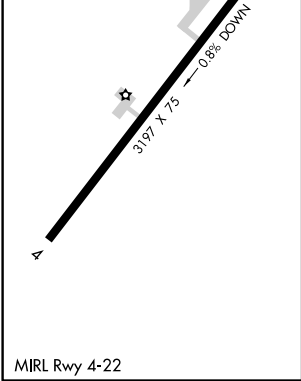
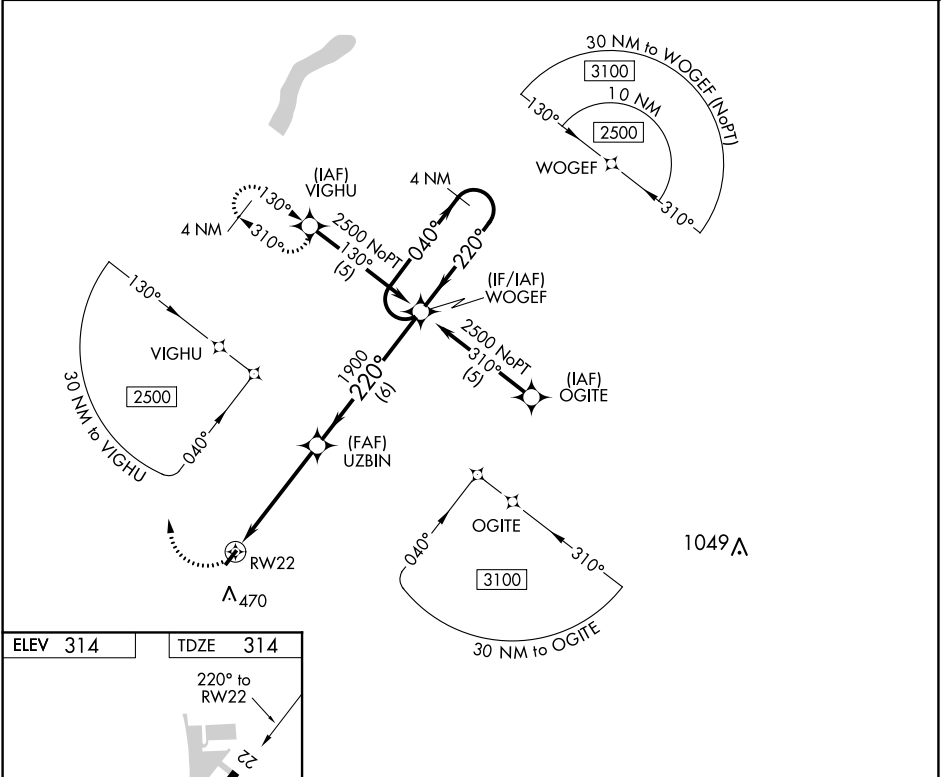
APP CRS	Rwy Idg	3197
220°	TDZE	314
	Apt Elev	314

RNAV (GPS) RWY 22
FLORALA MUNI (ØJ4)


⚠ Circling NA at night. DME/DME RNP-0.3 NA. Helicopter visibility reduction below 1 SM NA. When local altimeter setting not received, use Crestview altimeter setting and increase all MDA 60 feet. Night landing: Rwy 22 NA.

MISSSED APPROACH: Climbing right turn to 2500 direct VIGHU and hold.


CAIRNS APP CON 133.45 239.4	UNICOM 123.0 (CTAF)
---------------------------------------	-------------------------------



2500



VIGHU



4 NM

Holding Pattern

WOGEF

040°

2500

←220°

UZBIN

220°

1900

3.04°

TCH 40

RW22

4.8 NM

6 NM

CATEGORY	A	B	C	D
LNAV MDA	820-1	506 (600-1)	820-1½ 506 (600-1½)	NA
CIRCLING	820-1	506 (600-1)	820-1½ 506 (600-1½)	NA

