

Flight Procedures Cover Page	Task Action: FLIGHT CHECK	Task Type: IAP	Estimated Chart Date: 05/16/2024	APWS Task ID: 431E4535CC414535999B31294CE8F237	APWS Project ID: 97060A63E5E84B28A5E1DCD5F7116871
Procedure: RNAV (GPS) RWY 13 AMDT 0B		Enroute: NO	Specialist: Young, Silvia		Agreement Number:
Airport ID: KGYL			Airport City: GLENCOE		State: MN
Facility ID:	Facility Type:	Flight Inspection Remark Type: New FC Slot			
<div>Procedure Comments:</div> <div>ACTIVE DATA USED FOR KGYL AIRPORT AND RWYS.</div> <div>CRC REMINDER CHANGED FROM "12478052" TO "8CA0792F".</div> <div>NEW LNAV/VNAV CONTROLLING OBSTACLE: POLE (27-071841) 444630.92N/0940600.14W</div> <div>NEW LPV MA OBSTACLE: TREE (27-035920) 444548.66N/0940547.44W</div> <div>NEW LNAV OBSTACLE: TREE (27-071815) 444613.82N/0940700.70W</div> <div>NEW CIRCLING OBSTACLES: CAT A POLE (27-071798) 444630.83N/0940519.11W CAT B TOWER (27-023418) 444633.07N/0940251.20W</div> <div>DWN VORTAC VOR MON NATL PROGRAM.</div> <div>CANCEL T-NOTAMS 3/3007 AND 4/8375.</div> <div>CONTACT CASIMIR TABAKA 405.202.7857</div> <div><div>QUALITY 9 CHECKED BEGUE</div><div>QUALITY 35 CHECKED</div></div>					

FIPC BASIC FORM						
PROCEDURE: RNAV (GPS) RWY 13 AMDT 0B			AIRPORT NAME: GLENCOE MUNI		AIRPORT ID: KGYL	SPECIAL CONTROL NO: BG-02-196-24
FAC ID: KGYL13		CITY: GLENCOE			ST: MN	ORIG CHART DATE: 05/16/2024
DFL TYPE: PROC/S	THIRD PARTY: <input type="checkbox"/> YES	EST. TIME ON SITE: 0.4	REIMB. NUMBER: AC0721	PTS TASK ID: 431E4535CC414535999B31294CE8F237		
PREFLIGHT NOTES						
REVIEWER:					DATE:	
COMMENTS:					CHECK ONE: <input type="checkbox"/> FLT CK REQ <input type="checkbox"/> NFCR <input type="checkbox"/> REJECT <div style="display: flex; justify-content: space-between; border-top: 1px solid black; border-bottom: 1px solid black; width: 100%;"> YES NO </div> CPV COMPLETE?	
PROCEDURE RESULTS						
INSPECTION DATE: 03/19/2024	CREW #: VN285	N #: N77	INSTRUMENT PROCEDURE STATUS: <input checked="" type="checkbox"/> SAT <input type="checkbox"/> SAT W/CHANGES <input type="checkbox"/> UNSAT		ARINC CODING: <input checked="" type="checkbox"/> SAT <input type="checkbox"/> SAT/GOLD <input type="checkbox"/> UNSAT	
FLIGHT INSPECTOR SIGNATURE: michael a greenwood @ 03/19/2024 16:32			PRINTED NAME: GREENWOOD, MICHAEL AARON			NOTAM INITIATED? <input type="checkbox"/> YES <input checked="" type="checkbox"/> NO
FLIGHT INSPECTOR REMARKS: SAT as Proposed.						
IN-FLIGHT OBSTACLE REPORT						
OBSTRUCTION ID #:	COORDINATES OR LOCATION:	GNSS ALTITUDE (MSL):	BAROMETRIC ALTITUDE (MSL):	HEIGHT ABOVE GROUND LEVEL:		

GLENCOE, MINNESOTA

OLD
 AL-9354 (FAA)

21056

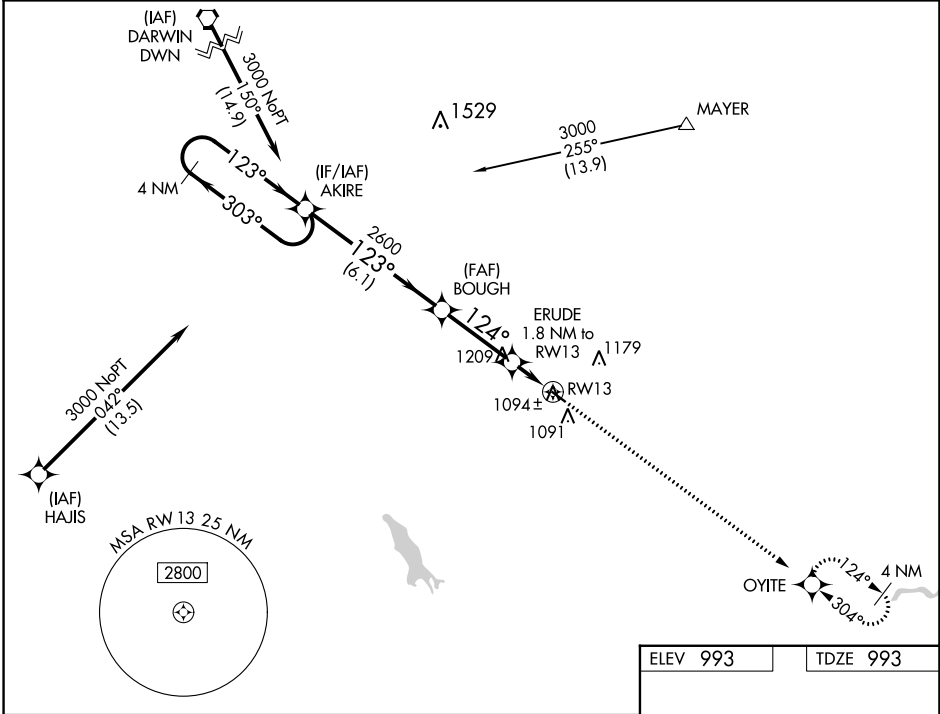
WAAS CH 99437 W13A	APP CRS 124°	Rwy Idg TDZE 993 Apt Elev 993
--	------------------------	---

RNAV (GPS) RWY 13

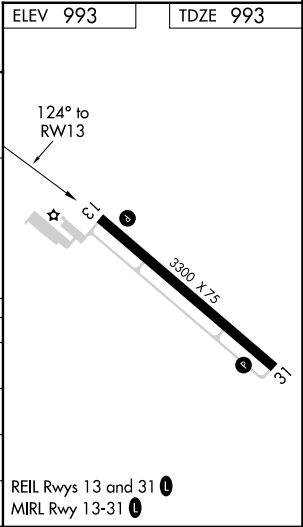
GLENCOE MUNI (GYL)

<div> <div></div> <div> For uncompensated Baro-VNAV systems, LNAV/VNAV NA below -16°C (4°F) or above 54°C (130°F). DME/DME RNP-0.3 NA. Rwy 13 helicopter visibility reduction below ¾ SM NA. </div> </div>	MISSED APPROACH: Climb to 3000 direct OYITE and hold.
--	--

AWOS-3 119.625	MINNEAPOLIS APP CON 134.7 284.7	UNICOM 122.8 (CTAF) 0
--------------------------	---	---------------------------------



4 NM Holding Pattern AKIRE		VGSI and RNAV glidepath not coincident (VGSI Angle 3.00/TCH 28).		3000 OYITE
GP 3.00° TCH 40		BOUGH 2600		*LNAV only.
3000 ← 303° 123° →		ERUDE 1.8 NM to RWY 13		*1.1 NM to RWY 13
123° →		RWY 13		124°
2600		1600		124°
6.1 NM		3.1 NM		0.7 NM
CATEGORY		A		B
LPV DA		1270-1		277 (300-1)
LNAV/VNAV DA		1246-1		253 (300-1)
LNAV MDA		1360-1		367 (400-1)
CIRCLING		1420-1 427 (500-1)		1480-1 487 (500-1)



GLENCOE, MINNESOTA
 Orig-A 01FEB18

44°45'N-94°05'W

GLENCOE MUNI (GYL)

RNAV (GPS) RWY 13

NC-1, 07 SEP 2023 to 05 OCT 2023

NC-1, 07 SEP 2023 to 05 OCT 2023

KGYL
GLENCOE, MN
GLENCOE MUNI
RNAV (GPS) RWY 13 ORIGB
LPV FINAL & MA ADJ OBSTACLE
1:100,000

BOUGH

LPV Final
TREE (1074) 27-033209

LPV MA Adjustment
TREE (1074) 27-035920

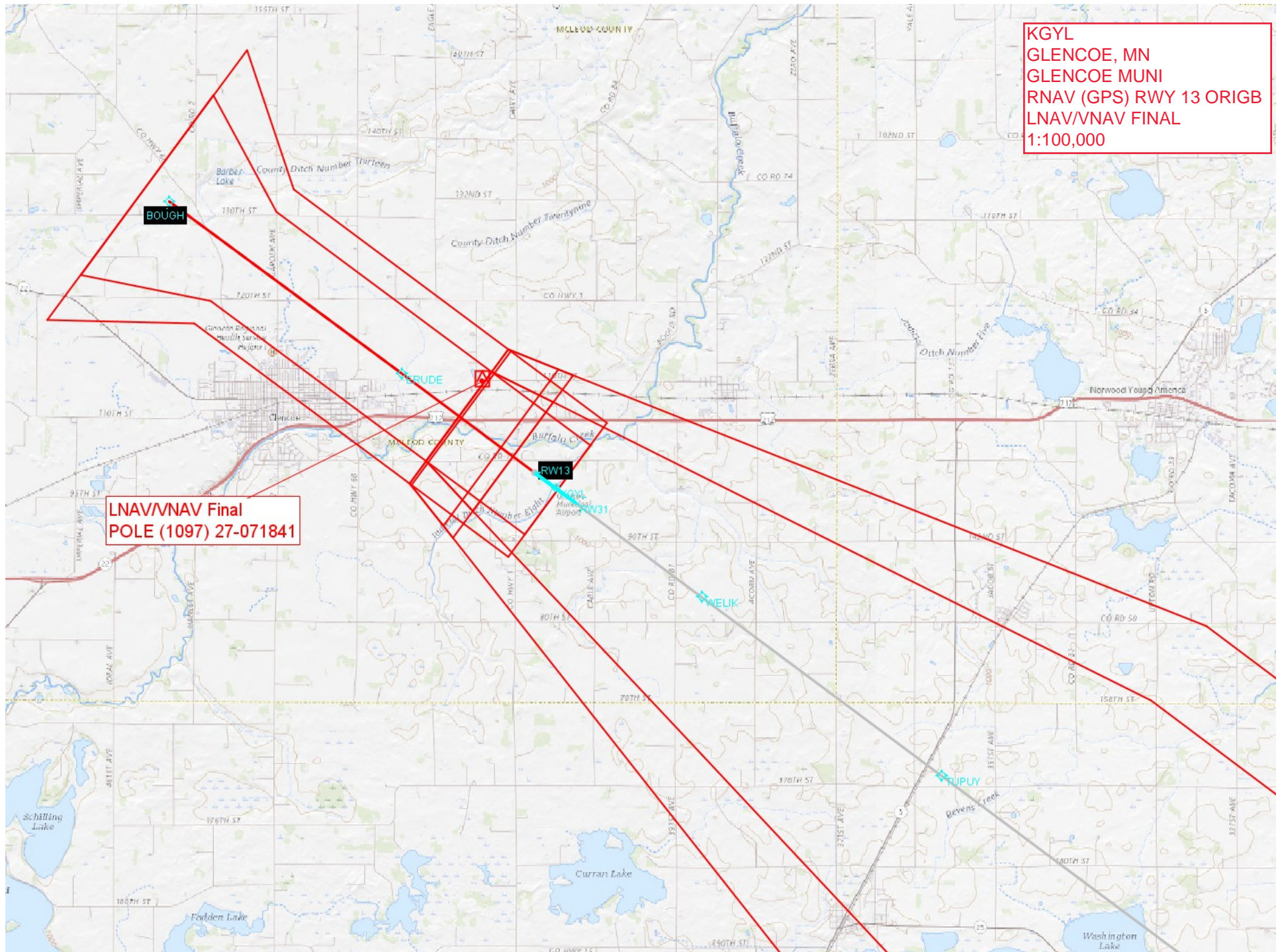
RWY13

WELIK

TUPUY

KGYL
GLENCOE, MN
GLENCOE MUNI
RNAV (GPS) RWY 13 ORIGB
LNAV/VNAV FINAL
1:100,000

LNAV/VNAV Final
POLE (1097) 27-071841



KGYL
GLENCOE, MN
GLENCOE MUNI
RNAV (GPS) RWY 13 ORIGB
LNAV FINAL AND CIRCLING
1:100,000

Circling CAT A
POLE (1110) 27-071798

Circling CAT B
TOWER (1179) 27-023418

LNAV BOUGH to ERUDE
AAO (1254)

LNAV ERUDE to KGYL:RW13:AER
TREE (1103) 27-071815

