

Flight Procedures Cover Page	Task Action: FLIGHT CHECK	Task Type: IAP	Estimated Chart Date: 11/03/2022	APWS Task ID: A3AA1DAE05A64972AAD1BEBBF3388B20	APWS Project ID: AC7B61566C5C415D89C6E8002C0B4294
Procedure: RNAV (GPS) RWY 18 ORIG		Enroute: NO	Specialist: Johnson, Timothy		Agreement Number:
Airport ID: KHFJ			Airport City: MONETT		State: MO
Facility ID:	Facility Type:	Flight Inspection Remark Type: New FC Slot			
<div>Procedure Comments: Pending data used for airport and runway</div> <div>Contact Allan Will (405) 954-6103</div> <div>J ZEDER 08/05/2022</div> <div>QUALITY 16 CHECKED</div> <div>QUALITY 38 CHECKED</div>					

MONETT, MISSOURI

AL-6980 (FAA)

21056

WAAS CH <b>53403</b> <b>W18A</b>	APP CRS <b>180°</b>	Rwy Idg TDZE <b>1314</b> Apt Elev <b>1314</b>	<b>5000</b>
--	------------------------	---	-------------

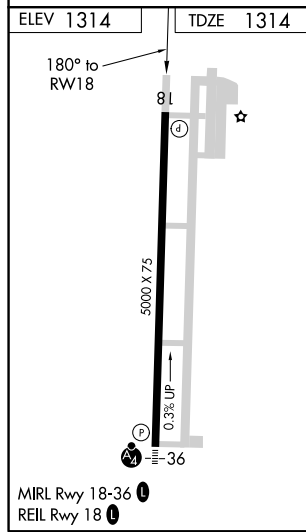
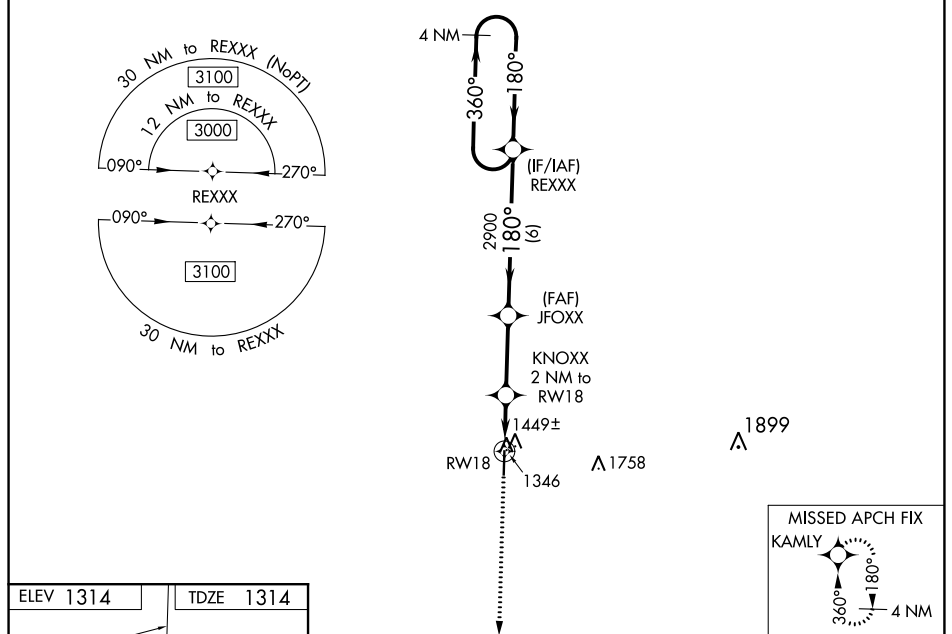
# RNAV (GPS) RWY 18




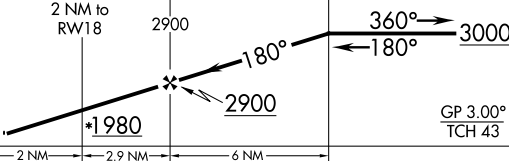

MONETT RGNL (HFJ)

▼ Baro-VNAV NA when using Joplin Rgnl altimeter setting. For uncompensated Baro-VNAV systems, LNAV/VNAV NA below -17°C (2°F) or above 54°C (130°F). When local altimeter setting not received, ▲ use Joplin Rgnl altimeter setting: increase all DA 111 feet and all MDA 120 feet; increase LPV visibility All Cats to 1¼; LNAV/VNAV all Cats and LNAV Cats C visibility to 1¾ and Circling Cat C visibility to 2. DME/DME RNP-0.3 NA.

MISSED APPROACH: Climb to 3100 direct KAMLY and hold.

AWOS-3 <b>118.275</b>	SPRINGFIELD APP CON <b>124.95 318.2</b>	CLNC DEL <b>121.85</b>	UNICOM <b>123.075 (CTAF) 1</b>
--------------------------	--	---------------------------	-----------------------------------



3100	KAMLY	VGSI and RNAV glidepath not coincident [VGSI Angle 3.00/TCH 43].			REXXX	4 NM Holding Pattern
						
*LNAV only.		KNOXX 2 NM to RW18	JFOXX 2900			
						
		2 NM	2.9 NM	6 NM		GP 3.00° TCH 43
CATEGORY	A	B	C	D		
LPV DA	1564-¾	250 (300-¾)	1564-1 250 (300-1)	NA		
LNAV/ VNAV DA	1619-1	305 (400-1)		NA		
LNAV MDA	1700-1	386 (400-1)		NA		
 CIRCLING	1760-1 446 (500-1)	1900-1 586 (600-1)	1900-1½ 586 (600-1½)	NA		

MONETT, MISSOURI  
Amdt 3 13NOV14

36°54'N-94°01'W

# RNAV (GPS) RWY 18

NC-3, 19 MAY 2022 to 16 JUN 2022

MONETT, MISSOURI

AL-6980 (FAA)

FIG

WAAS CH <b>99644</b> <b>W18A</b>	APP CRS <b>180°</b>	Rwy Idg TDZE Apt Elev	<b>6001</b> <b>1316</b> <b>1316</b>
--	------------------------	-----------------------------	---

# RNAV (GPS) RWY 18

MONETT RGNL (HFJ)

RNP APCH - GPS.

**⚠** Baro-VNAV and VDP NA when using Joplin Rgnl altimeter setting. For uncompensated Baro-VNAV systems, LNAV/VNAV NA below -17°C or above 54°C. When local altimeter setting not received, use Joplin Rgnl altimeter setting: increase LPV DA to 1678 feet and all visibilities ¼ SM; increase LNAV/VNAV DA to 1742 feet and all visibilities to ⅜ SM; increase all MDAs 120 feet; and LNAV visibility Cat C/D ¼ SM and Circling visibility Cat C/D ½ SM.

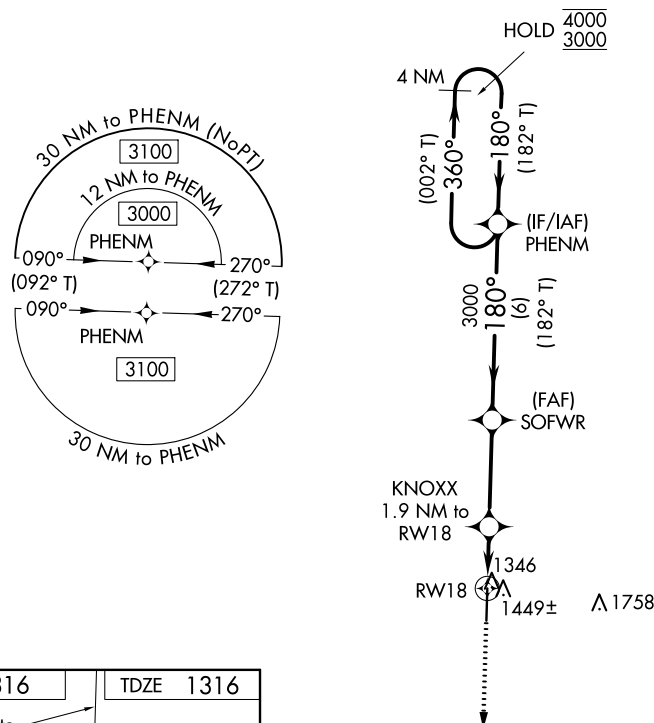
MISSED APPROACH:  
Climb to 3100 direct  
STERL and hold.

AWOS-3  
**118.275**

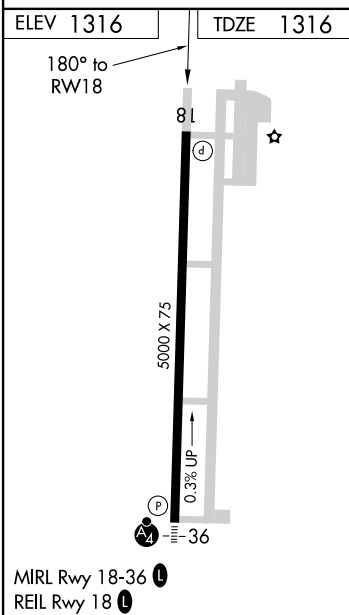
SPRINGFIELD APP CON  
**124.95 318.2**

CLNC DEL  
**121.85**

UNICOM  
**123.075 (CTAF) ①**



PROTOTYPE: NOT  
FOR NAVIGATION



3100	STERL	SOFWR	PHENM	4 NM Holding Pattern
KNOXX 1.9 NM to RW18	1.1 NM to RW18	3000	180°	360°
1960	1960	3000	180°	360°
1.1	0.8	3.3 NM	6 NM	GP 3.00° TCH 43
CATEGORY	A	B	C	D
LPV DA	1566-¾	250 (300-¾)		
LNAV/VNAV DA	1630-⅞	314 (400-⅞)		
LNAV MDA	1700-1	384 (400-1)	1700-1½	384 (400-1½)
CIRCLING	1760-1 444 (500-1)	1900-1 584 (600-1)	1900-1½ 584 (600-1½)	2060-2½ 744 (800-2½)

MONETT, MISSOURI  
Orig FIG

36°54'N-94°01'W

MONETT RGNL (HFJ)  
RNAV (GPS) RWY 18

AUTOMATED AL-6980 RNAV (GPS) RWY 18

NC-3  
7 JUL 2022  
COMPILER: CG  
REVIEWER:  
DBL CHKR:  
EFF: EFF: FIG



