

Flight Procedures Cover Page	Task Action: Amendment	Task Type: IAP	Estimated Chart Date: 04/23/2020	APWS Task ID: A380A34374E9423690BCD0B73F6E2682	APWS Request ID: 653122A4C3E84627B046A6D3E86A92C8
Procedure: RNAV (GPS) RWY 30 AMDT 1A		Enroute: NO	Specialist: Lindsey, John		Agreement Number:
Airport ID: KATY	Airport Name: WATERTOWN RGNL		Airport City: WATERTOWN		State: SD
Facility ID:	Facility Type:	Flight Inspection Remark Type:			
<p>Procedure Comments: PROCESSED IAW AIRCRAFT OPERATIONS GROUP (AJW-33) MEMO, OCTOBER 3, 2018, SUBJECT: FLIGHT INSPECTION REVIEW NOT REQUIRED.</p> <p>CIRCLING ICON</p> <p>P-NOTAM</p> <p>CONTACT: DAVID DANNER 405.954.5077 OR MARLON J. ROBINSON 405.954.3636.</p>					

QUALITY
12
CHECKED

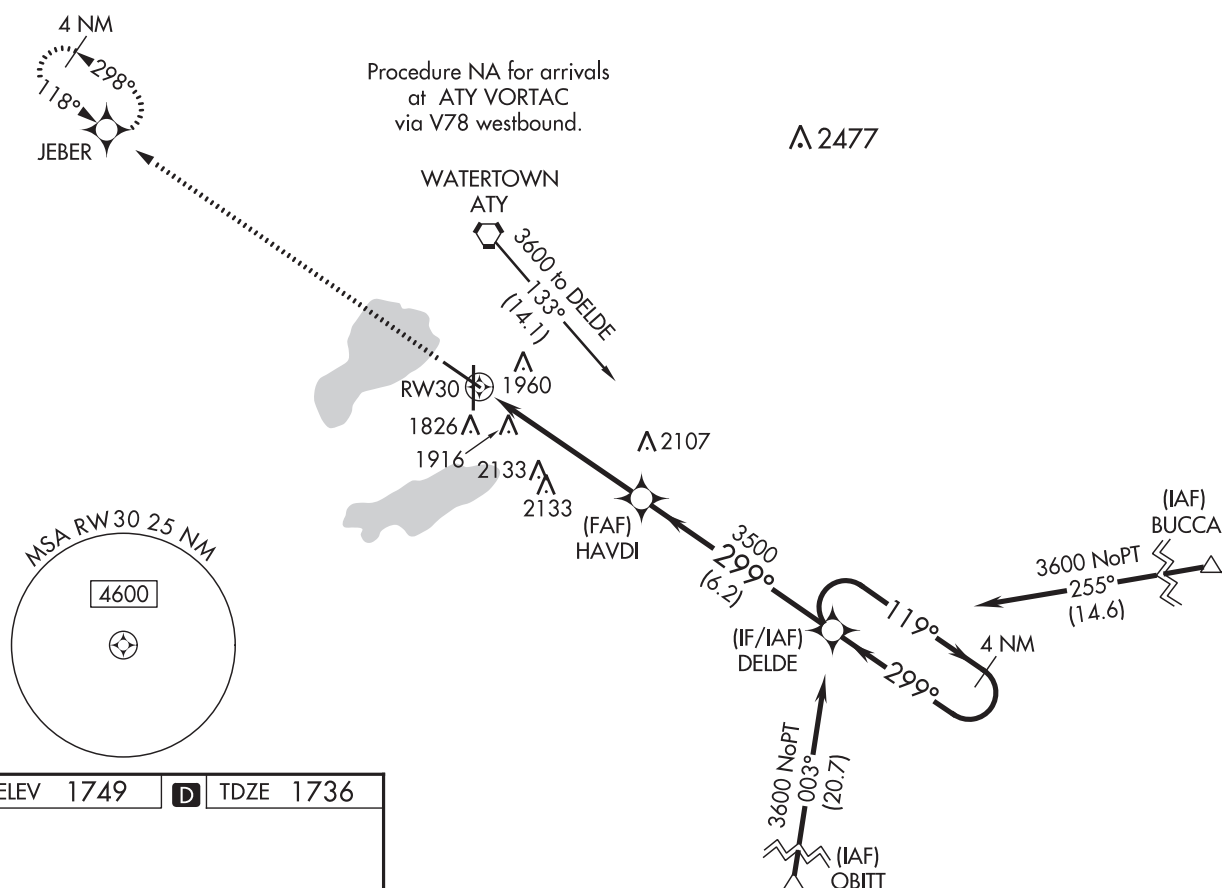
QUALITY
10
CHECKED

RNAV (GPS) RWY 30

WATERTOWN RGNL (ATY)

MISSED APPROACH: Climb to 3600 direct JEBER and hold.

UNICOM
123.05 (CTAF) **L**



3600

JEBER

VGS1 and RNAV glidepath not coincident
(VGS1 Angle 3.00/TCH 34).

DELDE

4 NM
Holding Pattern

119°

299°

3600

3500

299°

119°

GP 3.00°
TCH 45

1.9

3.5 NM

6.2 NM

RW30

HAVDI

*1.9 NM to RW30

*LNAV only

CATEGORY		A	B	C	D
LPV	DA	1990-1 254 (300-1)			
LNAV/ VNAV	DA	2208-1 $\frac{3}{4}$ 472 (500-1 $\frac{3}{4}$)			
LNAV	MDA	2360-1 624 (700-1)	2360-1 $\frac{3}{4}$ 624 (700-1 $\frac{3}{4}$)	2360-2 624 (700-2)	
CIRCLING		2360-1 611 (700-1)	2360-1 $\frac{3}{4}$ 611 (700-1 $\frac{3}{4}$)	2360-2 611 (700-2)	

NC-1, 05 DEC 2019 to 02 JAN 2020

