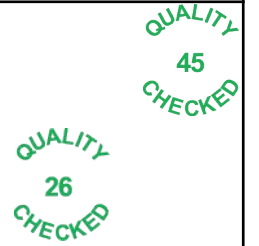


Flight Procedures Cover Page	Task Action: P-NOTAM	Task Type: IAP	Estimated Chart Date: 06/17/2021	APWS Task ID: A36E2D9A7099443998EF959A8C4CB56C	APWS Project ID: 1937E9D0DC8F4679AB2A3364ABD82805
Procedure: RNAV (GPS) RWY 5 AMDT 1B		Enroute: NO	Specialist: Lafferty, James		Agreement Number:
Airport ID: KGWW			Airport City: GOLDSBORO		State: NC
Facility ID:	Facility Type:	Flight Inspection Remark Type:			
<p>Procedure Comments:</p> <p>P-NOTAM</p> <p>This Cancels FDC 0/3360</p> <p>-</p> <p>Order 8260.3, chapter 2, New Circling Criteria Applied</p> <p>Contact Dave Teffeteller at 202-267-5177</p>					



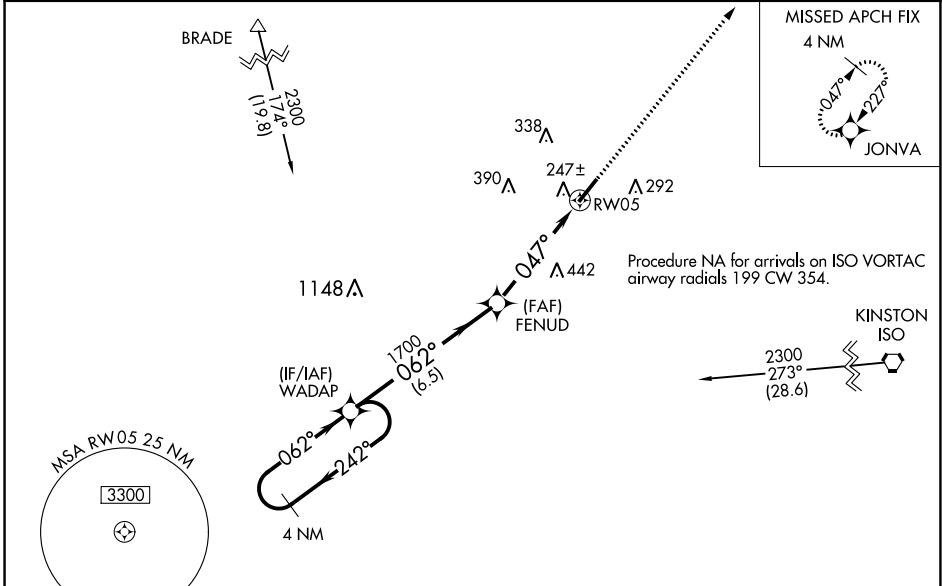
WAAS CH <b>99624</b> <b>W05A</b>	APP CRS <b>047°</b>	Rwy Idg TDZE Apt Elev	<b>5500</b> <b>132</b> <b>133</b>
--	------------------------	-----------------------------	---

RNAV (GPS) RWY 5  
WAYNE EXECUTIVE JETPORT (GWW)

**⚠** Baro-VNAV NA when using Smithfield altimeter setting. For uncompensated Baro-VNAV systems, LNAV/VNAV NA below -15°C (5°F) or above 43°C (109°F). DME/DME RNP-0.3 NA. Helicopter visibility reduction below ¾ SM NA. VDP NA with Smithfield altimeter setting. When local altimeter setting not received, use Smithfield altimeter setting and increase LPV DA to 490 feet, LNAV/VNAV DA to 462 feet, and all MDA 60 feet; increase LPV all Cats visibility to 1½ and LNAV/VNAV all Cats visibility to 1 mile.

**MISSED APPROACH:**  
Climb to 2000 direct JONVA and hold.

AWOS-3P <b>118.975</b>	SEYMOUR JOHNSON APP CON ★ <b>123.7 290.9</b>	UNICOM <b>122.7 (CTAF) 0</b>
---------------------------	---	---------------------------------



**ELEV 133      TDZE 132**

4 NM Holding Pattern  
WADAP  
GP 3.00° TCH 60  
2300 ← 242° / 062° →

VGSI and RNAV glidepath not coincident (VGSI Angle 3.00/TCH 40).  
2000 JONVA

FENUD 1700  
\*1.3 NM to RW05  
\*LNAV only

RW05  
047°

6.5 NM      3.5 NM      1.3 NM

CATEGORY	A	B	C	D
LPV DA		436-1	304 (400-1)	
LNAV/VNAV DA		408-7/8	276 (300-7/8)	
LNAV MDA	580-1	448 (500-1)	580-13/8	448 (500-13/8)
CIRCLING	580-1 447 (500-1)	600-1 467 (500-1)	600-1½ 467 (500-1½)	700-2 567 (600-2)

MIRL Rwy 5-23  
REIL Rwy 5 and 23

SE-2, 08 OCT 2020 to 05 NOV 2020

SE-2, 08 OCT 2020 to 05 NOV 2020



