



Flight Procedures Cover Page	Task Action: P-NOTAM	Task Type: IAP	Estimated Chart Date: 07/14/2022	APWS Task ID: A2B61919BFCE4AFDBAF4CFA5328CA762	APWS Project ID: C6255E07774F4027961F9E9CFB87E0DB
Procedure: RNAV (GPS) RWY 22 AMDT 0B		Enroute: NO	Specialist: Thibodeaux, Charles		Agreement Number:
Airport ID: 4A6			Airport City: SCOTTSBORO		State: AL
Facility ID:	Facility Type:	Flight Inspection Remark Type:			
<p>Procedure Comments: ORDER 8260.3, CHAPTER 2, NEW CIRCLING CRITERIA APPLIED CONTACT JASON KRETSCHMER, AJV-A421, 405-954-4019</p> <div style="display: flex; justify-content: space-between; align-items: center;"> <div style="text-align: center;"> <p><i>Digitally signed by</i> JASON KRETSCHMER May 04, 2022</p> </div> <div style="text-align: center;">   </div> </div>					

RADII: CAT A: 1.30.
CAT B: 1.83. CAT C:
2.88. CAT D: 3.77.

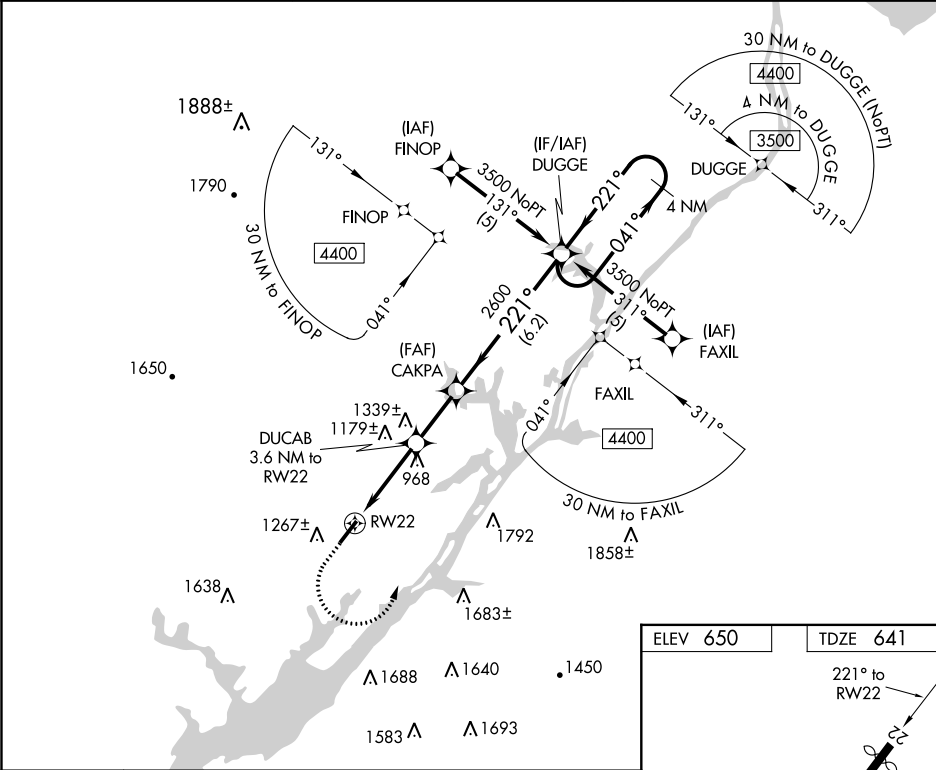
Circling CAT A TOWER (1267)
01-020034

APP CRS	Rwy Idg	5010
221°	TDZE	641
	Apt Elev	650

RNAV (GPS) RWY 22
SCOTTSBORO MUNI-WORD FIELD (4A6)

<p>⚠ Rwy 22 helicopter visibility reduction below 1 SM NA. DME/DME RNP-0.3 NA. Procedure NA at night.</p>	<p>MISSED APPROACH: Climb to 1100 then climbing left turn to 3500 direct DUGGE and hold.</p>
--	--

AWOS-3PT 120.125	ATLANTA CENTER 124.5 270.325	UNICOM 123.0 (CTAF) 0
---------------------	---------------------------------	---------------------------------



1100	3500	DUGGE	Visual Segment - Obstacles.
<p>CAKPA DUGGE 4 NM Holding Pattern</p>			
<p>DUCAB 3.6 NM to RW22</p>			
<p>RW22 1840 2600 3500</p>			
<p>3.6 NM 2.4 NM 6.2 NM</p>			
CATEGORY	A	B	C D
LNNAV MDA	1360-1	719 (800-1)	1360-2 719 (800-2) 1360-2¼ 719 (800-2¼)
CIRCLING	1620-1¼ 970 (1000-1¼)	1700-1½ 1050 (1100-1½)	1800-3 1150 (1200-3)

