

Flight Procedures Cover Page	Task Action: FLIGHT CHECK	Task Type: IAP	Estimated Chart Date: 02/25/2021	APWS Task ID: A2809BD0BB324659A64CF451E60C8AD1	APWS Project ID: F3EAC557F8754DF1A02A444D79163D51
Procedure: RNAV (GPS) RWY 14 AMDT 0E		Enroute: NO	Specialist: Fowler, Shane		Agreement Number:
Airport ID: KHUF	Airport Name: TERRE HAUTE RGNL		Airport City: TERRE HAUTE		State: IN
Facility ID:	Facility Type:	Flight Inspection Remark Type: New FC Slot			
<p>Procedure Comments:</p> <p>PNOTAM.</p> <p>THIS CANCELS FDC NOTAM 0/9356.</p> <p>FINAL CONTROLLING OBSTACLE: 18-001772, 825 MSL TOWER, 393053.60N/0872358.70W, AC4D.</p> <p>CIRCLING CAT A/B CONTROLLING OBSTACLE: 18-060999, 738 MSL TREE, 392821.95N/0871649.91W, AC1A.</p> <p>PROCESSED IAW AIRCRAFT OPERATIONS GROUP (AJF-1000) MEMO, DATED JUNE 4, 2020, SUBJECT: FLIGHT INSPECTION OF NEW CONTROLLING OBSTACLES.</p> <p>CONTACT: ALLAN WILL 405-954-6103.</p>					

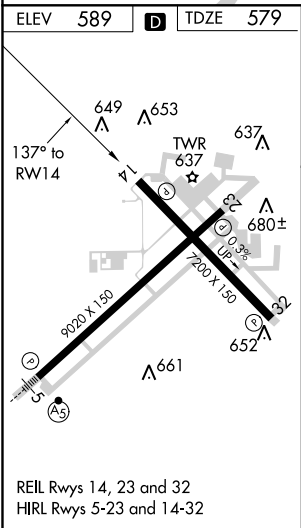
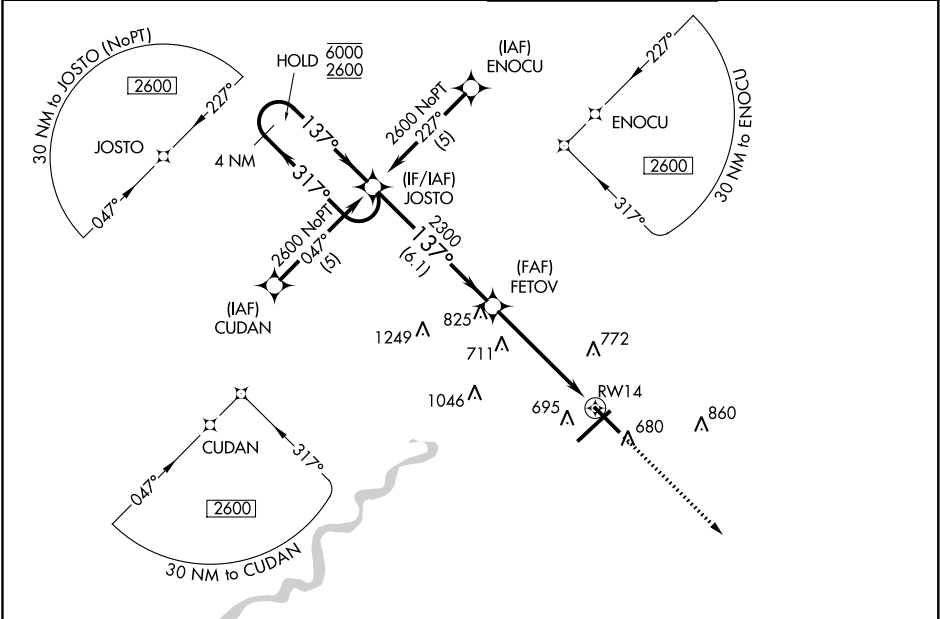


APP CRS	Rwy Idg	7200
137°	TDZE	579
	Apt Elev	589

OLD

RNAV (GPS) RWY 14
TERRE HAUTE RGNL (HUF')

RNP APCH.		MISSED APPROACH: Climb to 2600 direct CORIE and hold.	
VDP NA when using Paris altimeter setting. When local altimeter setting not received, use Paris altimeter setting and increase all MDA 80 feet, LNAV Cat C/D visibility 1/8 SM, Circling Cat C/D 1/4 SM. Rwy 14 helicopter visibility reduction below 3/4 SM NA.			
ATIS 127.5 269.375	HULMAN APP CON 125.45 339.8	HULMAN TOWER 134.725 239.0	GND CON 121.6 348.6



ELEV 589 TDZE 579		4 NM Holding Pattern		2600	CORIE
JOSTO		FETOV		* LNAV only.	
6000 2600		2300		* 1.2 NM to RWY 14	
VGSI and descent angles not coincident (VGSI Angle 2.75/TCH 59).		3.04° TCH 55		RWY 14	
CATEGORY		A		B	
LNAV MDA		980-1 401 (400-1)		980-1 1/4 401 (400-1 1/4)	
CIRCLING		1020-1 431 (500-1)		1040-1 451 (500-1)	
		1220-1 3/4 631 (700-1 3/4)		1220-2 631 (700-2)	

EC-2, 13 AUG 2020 to 10 SEP 2020

EC-2, 13 AUG 2020 to 10 SEP 2020

