

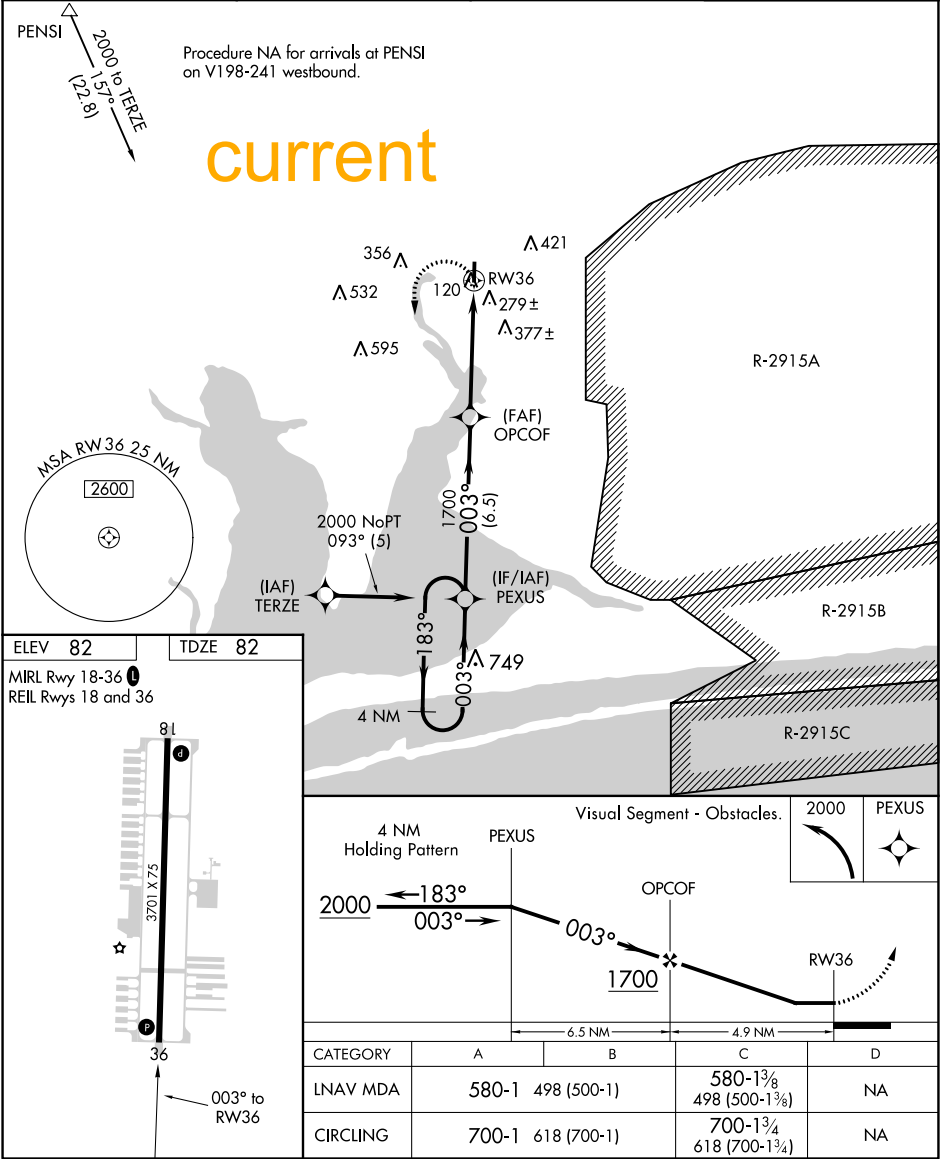
Flight Procedures Cover Page	Task Action: P-NOTAM	Task Type: IAP	Estimated Chart Date: 02/24/2022	APWS Task ID: A20C561EE8DF43E48A78616F991CC4C0	APWS Project ID: 885A45BDB91548D19171F511DA0B8492
Procedure: RNAV (GPS) RWY 36 AMDT 1D		Enroute: NO	Specialist: Sickels, Dale		Agreement Number:
Airport ID: 2R4			Airport City: MILTON		State: FL
Facility ID:	Facility Type:	Flight Inspection Remark Type:			
<div>Procedure Comments: Order 8260.3, Chapter 2, New Circling Criteria Applied.  Contact Jason Kretschmer, AJV-A421, 405-954-4019</div> <div><div>Digitally signed by <b>JASON KRETSCHMER</b> Jan 12, 2022</div><div>QUALITY 47 CHECKED</div><div>QUALITY 38 CHECKED</div></div>					

APP CRS	Rwy Idg	3701
003°	TDZE	82
	Apt Elev	82

RNAV (GPS) RWY 36

PETER PRINCE FIELD (2R4)

RNP APCH.			MISSED APPROACH: Climbing left turn to 2000 direct PEXUS and hold.
<div><div>▼</div><div>▲ NA</div></div>	Rwy 36 helicopter visibility reduction below 1 SM NA. Use Pensacola Intl altimeter setting; when not received, use Crestview altimeter setting and increase all MDA 40 feet; increase LNAV visibility Cat C ½ SM. Procedure NA at night.		
PENSACOLA APP CON 124.85 235.775		GCO 121.725	AUNICOM 122.975 (CTAF) 0



AIRPORT ID	K2R4
AIRPORT NAME	PETER PRINCE FIELD
CITY	MILTON
STATE	FL
Proc ID:	RNAV (GPS) RWY 36
Amdt #	1D
Scale	1:100,000

