

Flight Procedures Cover Page	Task Action: Abbreviated Amendment	Task Type: IAP	Estimated Chart Date: 06/15/2023	APWS Task ID: A1B295851031437993D62AACF509E14C	APWS Project ID: 26054049EFCB41A8A3CA3DD9B194EA13
Procedure: HI - VOR OR TACAN RWY 15 AMDT 4A		Enroute: NO	Specialist: Roslewski, Russell		Agreement Number:
Airport ID: KCHS	Airport Name: CHARLESTON AFB/INTL		Airport City: CHARLESTON		State: SC
Facility ID:	Facility Type:	Flight Inspection Remark Type:			
<p><b>Procedure Comments:</b>            New circling areas based on existing procedure at the airport – ILS OR LOC RWY 15, Amdt 24B, pending chart date 12/31/20.</p> <p>Processed IAW Aircraft Operations Group (AJF-10) Memo, April 29, 2020, Subject: Flight Inspection Review Not Required.</p> <p>Jason Kretschmer, 405-954-4019</p> <p style="text-align: center;"><i>Digitally signed by</i>  <b>JASON KRETSCHMER</b>            Apr 01, 2021</p>					

QUALITY  
22  
CHECKED

3.31.2021  
BD

QUALITY  
26  
CHECKED

CHARLESTON, SOUTH CAROLINA

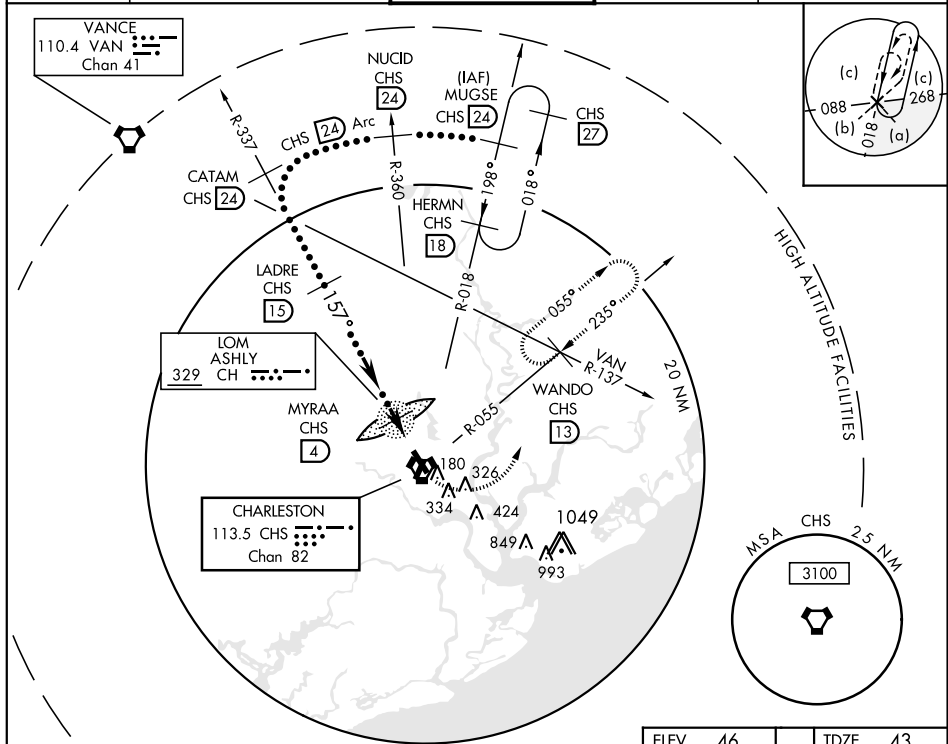
**OLD**

HI-VOR/DME or TACAN RWY 15

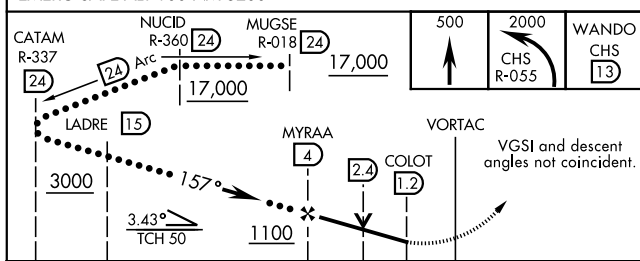
VORTAC CHS <b>113.5</b> Chan <b>82</b>	AF 15.1 Arprt Elev <b>46</b>	JAL-76 [USAF]	CHARLESTON AFB/INTL (KCHS)
--	---------------------------------	---------------	----------------------------

<p>▼ * When ALS inop, increase CAT D RVR to 6000, vis to 1¼, CAT E vis to 1½.</p>	<p>ALSF-2</p>	<p>MISSED APPROACH: Climb to 500 then climbing left turn to 2000 via CHS R-055 to WANDO INT/CHS 13 DME and hold.</p>
---	---------------	--

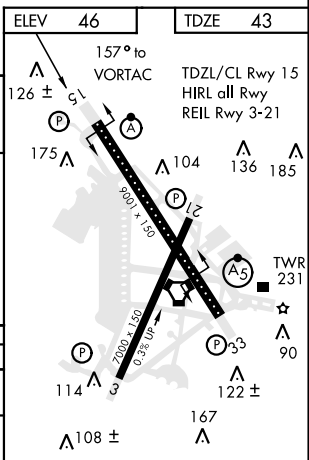
<p>ATIS <b>124.75</b></p>	<p>CHARLESTON APP CON <b>120.7 306.925</b> (151°- 330°) <b>119.3 379.925</b> (331°- 150°)</p>	<p>CHARLESTON TOWER <b>126.0 239.0</b></p>	<p>GND CON <b>121.9 348.6</b></p>	<p>CLNC DEL <b>127.325 291.65</b></p>
-------------------------------	---	--	---------------------------------------	---



EMERG SAFE ALT 100 NM 3200



CATEGORY	C	D	E
S-15*	460/40 417 (500-¾)	460/50 417	(500-1)
CIRCLING	540-1½ 495 (500-1½)	600-2 555 (600-2)	740-2½ 695 (700-2½)



CHARLESTON, SOUTH CAROLINA

32°54'N-80°02'W

CHARLESTON AFB/INTL (KCHS)

Amtd 4 18032

HI-VOR/DME or TACAN RWY 15

SE-2, 10 SEP 2020 to 08 OCT 2020

