

DME DME Assessment Results for LOHLA3 path KLAS:RW01L:DER_PENSK

Results Summary

Flyability:	Completed
DME/DME:	Completed - No Critical DMEs
Name:	Bob CTR Graham
Project File:	C:\Users\Bob CTR Graham\Desktop\AREA NAV Projects and TARGETS Files\LAS METROPLEX\POST-IMPLEMENTATION WORK\LOHLA3 SID_3-24-22\20210910_LOHLA.tgs
Output File:	C:\Users\Bob CTR Graham\Desktop\AREA NAV Projects and TARGETS Files\LAS METROPLEX\POST-IMPLEMENTATION WORK\LOHLA3 SID_3-24-22\FINAL DOCS\KLAS [IFPA] LOHLA3 20210910_0947 PDT\KLAS-RW01L-DER_PENSK\KLAS LOHLA3 SID KLAS RW01L PENSK 20210910_0947 PDT.pdf
Procedure Name:	LOHLA3
Software: DmeDmePlugin:	6.3.0
Date/Time:	09/10/2021 09:47 PDT
Databases:	DTED MAX

Failures

No Failures

Warnings

No Warnings

Notes For Flight Check

None

Flight Plan

Name	Type	Lat/Lon	Altitude (ft)	VNAV Mode	Ground Speed (kts)	Turn Type	Leg Type
KLAS:RW01L:DER	WP	N36° 05' 51.77", W115° 09' 27.19"	2088.5	VNAV	130	FLY_BY	TF
PENSK	WP	N36° 10' 42.97", W115° 18' 36.15"	7279	VNAV	200	FLY_BY	TF
Climb Gradient: 514.0 ft/NM up to 10300.0 ft MSL 200.0 ft/NM							

Flyability

Flight Type:	SID
Selected Airport:	KLAS [IFPA]
Climb Gradient:	514.0 ft/NM up to 10300.0 ft MSL 200.0 ft/NM
Speeds:	130 at the Runway DER
	145 at the end of the VA or VI leg
	200 Ground Speed to 11000 FT
	240 Ground Speed to 18000 FT
	260 Ground Speed to 24000 FT
	340 Ground Speed above 24000 FT
Descent During a Turn:	Allowed
VNAV Mode:	Flight Plan

DME DME Assessment Results for LOHLA3 path KLAS:RW01L:DER_PENSK

DME/DME	
RNP:	RNP 2
Flight Mode:	Manual
Line of Sight (DTED Level 0 Max):	Evaluated
Inertial Drift:	Enabled
Initial Drift:	0.558 NM
INS Drift Rate:	8.0 NM/Hour
Range Mode:	OSV
RNP Edges:	Evaluated
Min DME Range:	3.0 NM
DME Types:	DME, VOR-DME, VORTAC
DME Include Angles:	30 to 150
Critical DMEs:	Allowed
DoD Facilities:	Not included
Foreign Facilities:	Not included
High DMEs:	Included
Low DMEs:	Included
Terminal DMEs:	Included
Flight Check DMEs:	Not selected
Higher Altitudes:	Not Evaluated
Near Maximum Altitude:	Not Evaluated
Automatic ESVs:	Not enabled
Disabled DMEs:	None

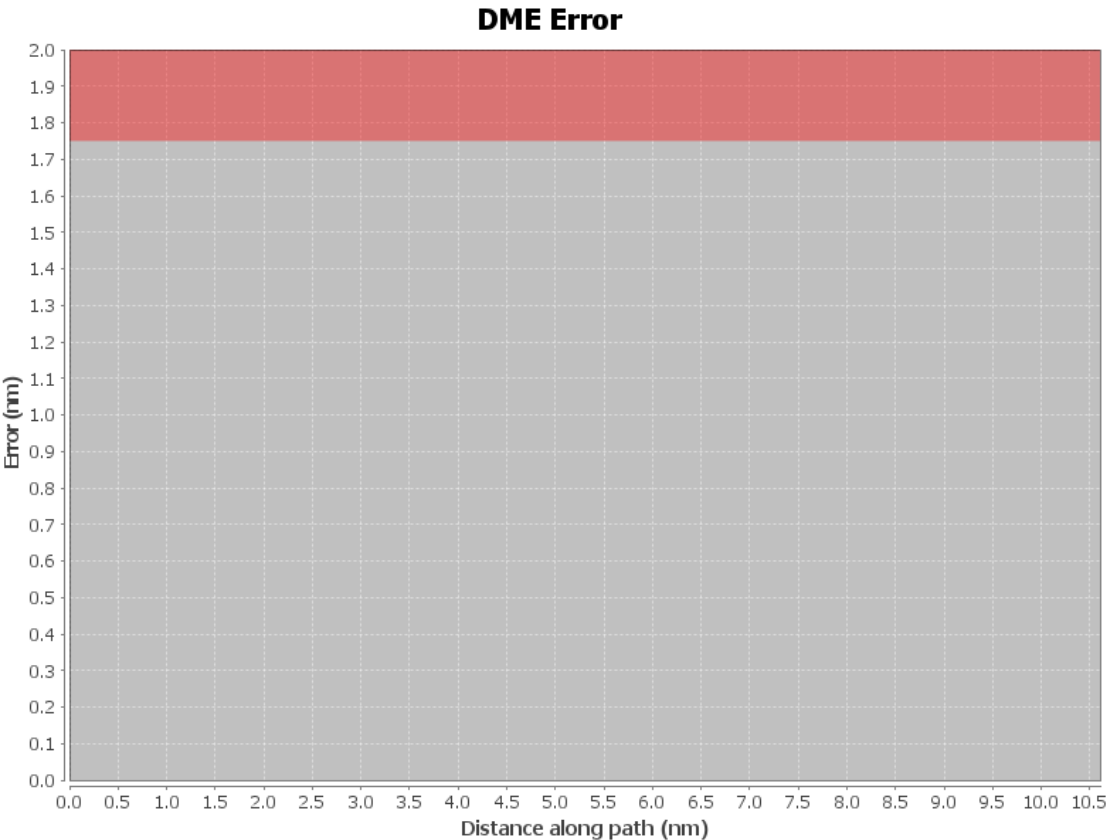
DME/DME (Continued)										
DMEs Used										
#	Name	Lat/Lon	MAGVAR	Range	Type	Source	Critical	Status	Time	Distance

Flight Check DME Selection						
Distance [NM]	Selected DMEs					Alternate
0.0						

Inertial Drift Segments			
#	Start Location	End Location	Length [NM]
1	N36° 05' 53.73", W115° 09' 26.06"	N36° 10' 42.97", W115° 18' 36.15"	10.0632

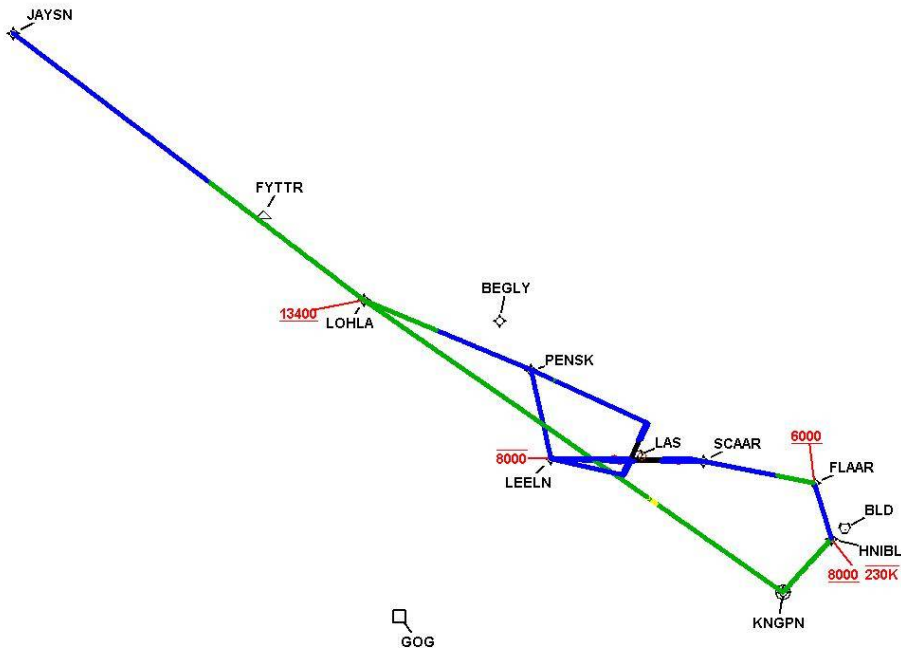
Available DMEs by Waypoints		
Waypoint Before	Waypoint After	DME List
KLAS:RW01L:DER	PENSK	

User Data Files								
#	File Name							
1	UserDMEsKLAS [IFPA] LOHLA1 SID_20191204_2040 MST.udt							
User DMEs								
#	Name	Lat/Lon	MAGVAR	Range	Elevation [ft]	Frequency	Replaces	Status
1	DAG FAA 704130-36 DAG [IFPA]	N34° 57' 44.84", W116° 34' 41.40"	15.0 E	40	1760	113.2	DAG FAA 704130-36	
ESV:		Bearing [True]: 24.0° to 42.0° Bearing [Mag]: 9.0° to 27.0°				Arc Distance: Out to 99.0 NM Altitude: 12200.0 to 16000.0 ft		
2	MMM FAA 698159-45 MMM [IFPA]	N36° 46' 09.31", W114° 16' 38.83"	16.0 E	40	2106.3	114.3	MMM FAA 698159-45	
ESV:		Bearing [True]: 222.0° to 255.0° Bearing [Mag]: 206.0° to 239.0°				Arc Distance: Out to 79.0 NM Altitude: 10800.0 to 16000.0 ft		



DME DME Assessment Results for LOHLA3 path KLAS:RW01L:DER_PENSK

Graphic Depiction 1



DME DME Assessment Results for LOHLA3 path KLAS:RW01L:DER_PENSK

Graphic Depiction 2



DME DME Assessment Results for LOHLA3 path KLAS:RW01R:DER_PENSK

Results Summary

Flyability:	Completed
DME/DME:	Completed - No Critical DMEs
Name:	Bob CTR Graham
Project File:	C:\Users\Bob CTR Graham\Desktop\AREA NAV Projects and TARGETS Files\LAS METROPLEX\POST-IMPLEMENTATION WORK\LOHLA3 SID_3-24-22\20210910_LOHLA.tgs
Output File:	C:\Users\Bob CTR Graham\Desktop\AREA NAV Projects and TARGETS Files\LAS METROPLEX\POST-IMPLEMENTATION WORK\LOHLA3 SID_3-24-22\FINAL DOCS\KLAS [IFPA] LOHLA3 20210910_0947 PDT\KLAS-RW01R-DER_PENSK\KLAS LOHLA3 SID KLAS RW01R PENSK 20210910_0947 PDT.pdf
Procedure Name:	LOHLA3
Software: DmeDmePlugin:	6.3.0
Date/Time:	09/10/2021 09:47 PDT
Databases:	DTED MAX

Failures

No Failures

Warnings

No Warnings

Notes For Flight Check

None

Flight Plan

Name	Type	Lat/Lon	Altitude (ft)	VNAV Mode	Ground Speed (kts)	Turn Type	Leg Type
KLAS:RW01R:DER	WP	N36° 05' 54.88", W115° 09' 12.81"	2080.1	VNAV	130	FLY_BY	TF
PENSK	WP	N36° 10' 42.97", W115° 18' 36.15"	7279	VNAV	200	FLY_BY	TF
Climb Gradient: 526.0 ft/NM up to 10300.0 ft MSL 200.0 ft/NM							

Flyability

Flight Type:	SID
Selected Airport:	KLAS [IFPA]
Climb Gradient:	526.0 ft/NM up to 10300.0 ft MSL 200.0 ft/NM
Speeds:	130 at the Runway DER
	145 at the end of the VA or VI leg
	200 Ground Speed to 11000 FT
	240 Ground Speed to 18000 FT
	260 Ground Speed to 24000 FT
	340 Ground Speed above 24000 FT
Descent During a Turn:	Allowed
VNAV Mode:	Flight Plan

DME DME Assessment Results for LOHLA3 path KLAS:RW01R:DER_PENSK

DME/DME	
RNP:	RNP 2
Flight Mode:	Manual
Line of Sight (DTED Level 0 Max):	Evaluated
Inertial Drift:	Enabled
Initial Drift:	0.558 NM
INS Drift Rate:	8.0 NM/Hour
Range Mode:	OSV
RNP Edges:	Evaluated
Min DME Range:	3.0 NM
DME Types:	DME, VOR-DME, VORTAC
DME Include Angles:	30 to 150
Critical DMEs:	Allowed
DoD Facilities:	Not included
Foreign Facilities:	Not included
High DMEs:	Included
Low DMEs:	Included
Terminal DMEs:	Included
Flight Check DMEs:	Not selected
Higher Altitudes:	Not Evaluated
Near Maximum Altitude:	Not Evaluated
Automatic ESVs:	Not enabled
Disabled DMEs:	None

DME/DME (Continued)										
DMEs Used										
#	Name	Lat/Lon	MAGVAR	Range	Type	Source	Critical	Status	Time	Distance

Flight Check DME Selection						
Distance [NM]	Selected DMEs					Alternate
0.0						

Inertial Drift Segments			
#	Start Location	End Location	Length [NM]
1	N36° 05' 56.82", W115° 09' 11.70"	N36° 10' 42.97", W115° 18' 36.15"	10.09

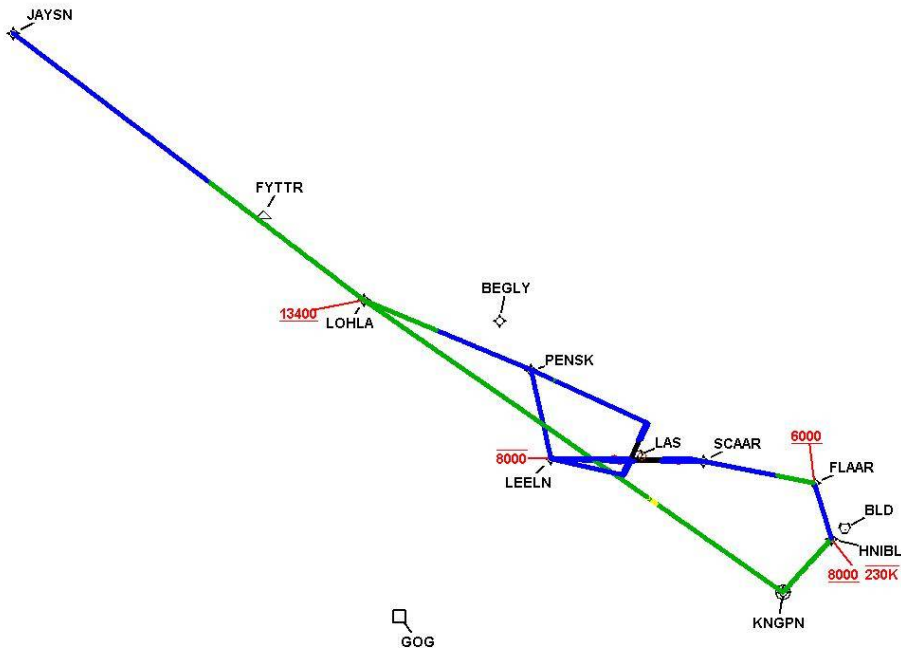
Available DMEs by Waypoints		
Waypoint Before	Waypoint After	DME List
KLAS:RW01R:DER	PENSK	

User Data Files								
#	File Name							
1	UserDMEsKLAS [IFPA] LOHLA1 SID_20191204_2040 MST.udt							
User DMEs								
#	Name	Lat/Lon	MAGVAR	Range	Elevation [ft]	Frequency	Replaces	Status
1	DAG FAA 704130-36 DAG [IFPA]	N34° 57' 44.84", W116° 34' 41.40"	15.0 E	40	1760	113.2	DAG FAA 704130-36	
ESV:		Bearing [True]: 24.0° to 42.0° Bearing [Mag]: 9.0° to 27.0°				Arc Distance: Out to 99.0 NM Altitude: 12200.0 to 16000.0 ft		
2	MMM FAA 698159-45 MMM [IFPA]	N36° 46' 09.31", W114° 16' 38.83"	16.0 E	40	2106.3	114.3	MMM FAA 698159-45	
ESV:		Bearing [True]: 222.0° to 255.0° Bearing [Mag]: 206.0° to 239.0°				Arc Distance: Out to 79.0 NM Altitude: 10800.0 to 16000.0 ft		



DME DME Assessment Results for LOHLA3 path KLAS:RW01R:DER_PENSK

Graphic Depiction 1



DME DME Assessment Results for LOHLA3 path KLAS:RW01R:DER_PENSK

Graphic Depiction 2



DME DME Assessment Results for LOHLA3 path KLAS:RW08L:DER_FLAAR

Results Summary

Flyability:	Completed
DME/DME:	Completed - No Critical DMEs
Name:	Bob CTR Graham
Project File:	C:\Users\Bob CTR Graham\Desktop\AREA NAV Projects and TARGETS Files\LAS METROPLEX\POST-IMPLEMENTATION WORK\LOHLA3 SID_3-24-22\20210910_LOHLA.tgs
Output File:	C:\Users\Bob CTR Graham\Desktop\AREA NAV Projects and TARGETS Files\LAS METROPLEX\POST-IMPLEMENTATION WORK\LOHLA3 SID_3-24-22\FINAL DOCS\KLAS [IFPA] LOHLA3 20210910_0947 PDT\KLAS-RW08L-DER_FLAAR\KLAS LOHLA3 SID KLAS RW08L FLAAR 20210910_0947 PDT.pdf
Procedure Name:	LOHLA3
Software: DmeDmePlugin:	6.3.0
Date/Time:	09/10/2021 09:47 PDT
Databases:	DTED MAX

Failures

No Failures

Warnings

No Warnings

Notes For Flight Check

None

Flight Plan

Name	Type	Lat/Lon	Altitude (ft)	VNAV Mode	Ground Speed (kts)	Turn Type	Leg Type
KLAS:RW08L:DER	WP	N36° 04' 35.06", W115° 07' 15.90"	2043.5	VNAV	130	FLY_BY	TF
FLAAR	WP	N36° 02' 55.02", W114° 54' 25.66"	6000	VNAV	200	FLY_BY	TF
Climb Gradient: 254.0 ft/NM up to 6900.0 ft MSL 200.0 ft/NM							

Flyability

Flight Type:	SID
Selected Airport:	KLAS [IFPA]
Climb Gradient:	254.0 ft/NM up to 6900.0 ft MSL 200.0 ft/NM
Speeds:	130 at the Runway DER
	145 at the end of the VA or VI leg
	200 Ground Speed to 11000 FT
	240 Ground Speed to 18000 FT
	260 Ground Speed to 24000 FT
	340 Ground Speed above 24000 FT
Descent During a Turn:	Allowed
VNAV Mode:	Flight Plan

DME DME Assessment Results for LOHLA3 path KLAS:RW08L:DER_FLAAAR

DME/DME	
RNP:	RNP 2
Flight Mode:	Manual
Line of Sight (DTED Level 0 Max):	Evaluated
Inertial Drift:	Enabled
Initial Drift:	0.558 NM
INS Drift Rate:	8.0 NM/Hour
Range Mode:	OSV
RNP Edges:	Evaluated
Min DME Range:	3.0 NM
DME Types:	DME, VOR-DME, VORTAC
DME Include Angles:	30 to 150
Critical DMEs:	Allowed
DoD Facilities:	Not included
Foreign Facilities:	Not included
High DMEs:	Included
Low DMEs:	Included
Terminal DMEs:	Included
Flight Check DMEs:	Not selected
Higher Altitudes:	Not Evaluated
Near Maximum Altitude:	Not Evaluated
Automatic ESVs:	Not enabled
Disabled DMEs:	None

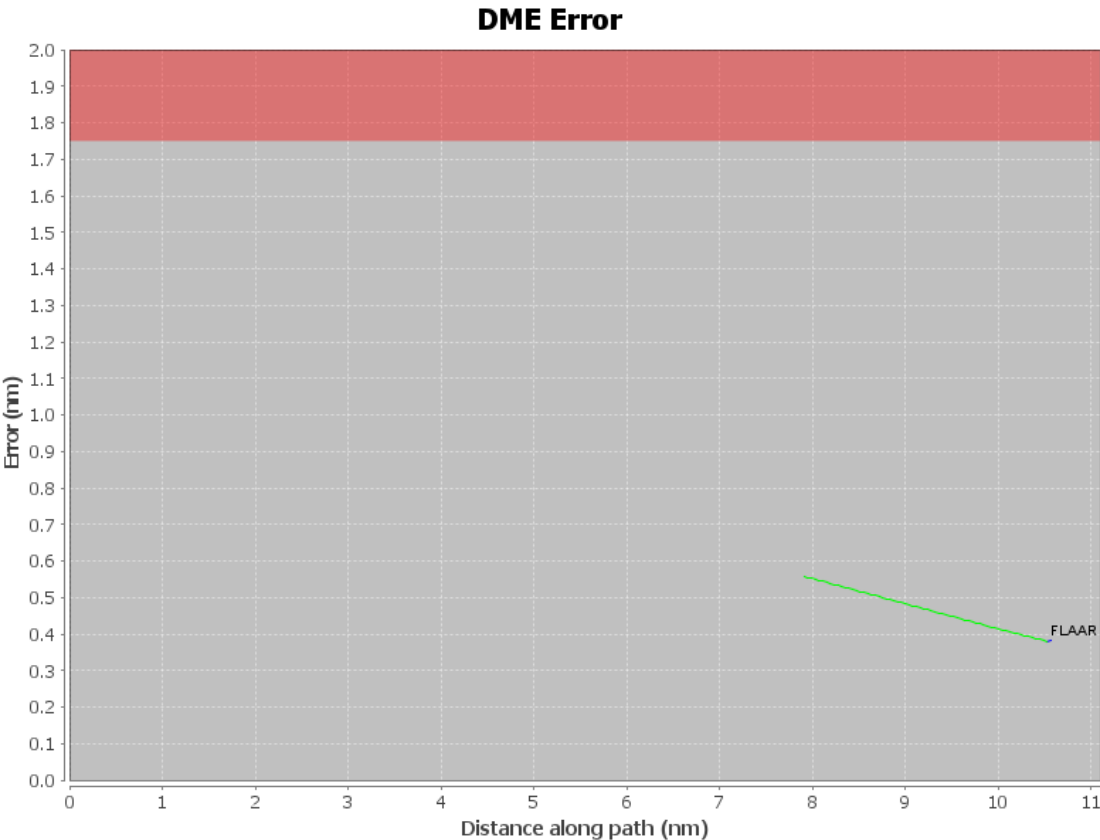
DME/DME (Continued)										
DMEs Used										
#	Name	Lat/Lon	MAGVAR	Range	Type	Source	Critical	Status	Time	Distance
1	LAS	N36° 04' 46.93", W115° 09' 35.27"	15.0 E	130	H	IFPA	NO	Enabled	21.4 %	24.8 %
2	BLD	N35° 59' 44.84", W114° 51' 48.88"	15.0 E	130	H	IFPA	NO	Enabled	21.4 %	24.8 %

Flight Check DME Selection						
Distance [NM]	Selected DMEs					Alternate
0.0						
7.9	LAS	BLD				
10.6						

Inertial Drift Segments			
#	Start Location	End Location	Length [NM]
1	N36° 04' 35.07", W115° 07' 13.23"	N36° 03' 25.71", W114° 57' 38.58"	7.8709

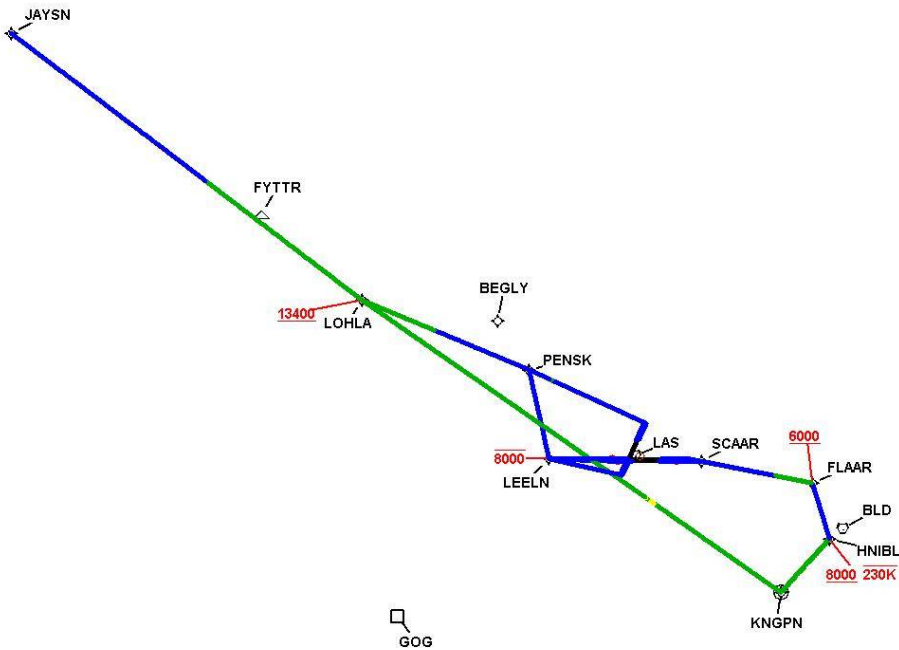
Available DMEs by Waypoints		
Waypoint Before	Waypoint After	DME List
KLAS:RW08L:DER	FLAAR	BLD, LAS

User Data Files								
#	File Name							
1	UserDMEsKLAS [IFPA] LOHLA1 SID_20191204_2040 MST.udt							
User DMEs								
#	Name	Lat/Lon	MAGVAR	Range	Elevation [ft]	Frequency	Replaces	Status
1	DAG FAA 704130-36 DAG [IFPA]	N34° 57' 44.84", W116° 34' 41.40"	15.0 E	40	1760	113.2	DAG FAA 704130-36	
ESV:		Bearing [True]: 24.0° to 42.0° Bearing [Mag]: 9.0° to 27.0°				Arc Distance: Out to 99.0 NM Altitude: 12200.0 to 16000.0 ft		
2	MMM FAA 698159-45 MMM [IFPA]	N36° 46' 09.31", W114° 16' 38.83"	16.0 E	40	2106.3	114.3	MMM FAA 698159-45	
ESV:		Bearing [True]: 222.0° to 255.0° Bearing [Mag]: 206.0° to 239.0°				Arc Distance: Out to 79.0 NM Altitude: 10800.0 to 16000.0 ft		



DME DME Assessment Results for LOHLA3 path KLAS:RW08L:DER_FLAAR

Graphic Depiction 1



DME DME Assessment Results for LOHLA3 path KLAS:RW08L:DER_FLAAR

Graphic Depiction 2



DME DME Assessment Results for LOHLA3 path KLAS:RW08R:DER_JAYSN

Results Summary

Flyability:	Completed
DME/DME:	Completed - No Critical DMEs
Name:	Bob CTR Graham
Project File:	C:\Users\Bob CTR Graham\Desktop\AREA NAV Projects and TARGETS Files\LAS METROPLEX\POST-IMPLEMENTATION WORK\LOHLA3 SID_3-24-22\20210910_LOHLA.tgs
Output File:	C:\Users\Bob CTR Graham\Desktop\AREA NAV Projects and TARGETS Files\LAS METROPLEX\POST-IMPLEMENTATION WORK\LOHLA3 SID_3-24-22\FINAL DOCS\KLAS [IFPA] LOHLA3 20210910_0947 PDT\KLAS-RW08R-DER_JAYSN\KLAS LOHLA3 SID KLAS RW08R JAYSN 20210910_0947 PDT.pdf
Procedure Name:	LOHLA3
Software: DmeDmePlugin:	6.3.0
Date/Time:	09/10/2021 09:47 PDT
Databases:	DTED MAX

Failures

No Failures

Warnings

No Warnings

Notes For Flight Check

None

Flight Plan

Name	Type	Lat/Lon	Altitude (ft)	VNAV Mode	Ground Speed (kts)	Turn Type	Leg Type
KLAS:RW08R:DER	WP	N36° 04' 25.17", W115° 07' 32.97"	2048.4	VNAV	130	FLY_OVER	TF
SCAAR	WP	N36° 04' 24.99", W115° 03' 55.43"	3086.6	VNAV	200	FLY_BY	TF
FLAAR	WP	N36° 02' 55.02", W114° 54' 25.66"	6000	VNAV	200	FLY_BY	TF
HNIBL	WP	N35° 59' 03.67", W114° 52' 57.26"	8000	VNAV	230	FLY_BY	TF
KNGPN	WP	N35° 55' 21.62", W114° 57' 06.08"	8999.8	VNAV	230	FLY_OVER	TF
LOHLA	WP	N36° 15' 31.32", W115° 32' 53.34"	13400	VNAV	240	FLY_BY	TF
JAYSN	WP	N36° 33' 53.41", W116° 02' 47.26"	14000	VNAV	240	FLY_BY	TF

Climb Gradient:
500.0 ft/NM up to 2682.0 ft MSL
242.0 ft/NM up to 6800.0 ft MSL
200.0 ft/NM

Flyability

Flight Type:	SID
Selected Airport:	KLAS [IFPA]
Climb Gradient:	500.0 ft/NM up to 2682.0 ft MSL 242.0 ft/NM up to 6800.0 ft MSL 200.0 ft/NM
Speeds:	130 at the Runway DER
	145 at the end of the VA or VI leg
	200 Ground Speed to 11000 FT
	240 Ground Speed to 18000 FT
	260 Ground Speed to 24000 FT
	340 Ground Speed above 24000 FT
Descent During a Turn:	Allowed
VNAV Mode:	Flight Plan

DME DME Assessment Results for LOHLA3 path KLAS:RW08R:DER_JAYSN

DME/DME	
RNP:	RNP 2
Flight Mode:	Manual
Line of Sight (DTED Level 0 Max):	Evaluated
Inertial Drift:	Enabled
Initial Drift:	0.558 NM
INS Drift Rate:	8.0 NM/Hour
Range Mode:	OSV
RNP Edges:	Evaluated
Min DME Range:	3.0 NM
DME Types:	DME, VOR-DME, VORTAC
DME Include Angles:	30 to 150
Critical DMEs:	Allowed
DoD Facilities:	Not included
Foreign Facilities:	Not included
High DMEs:	Included
Low DMEs:	Included
Terminal DMEs:	Included
Flight Check DMEs:	Not selected
Higher Altitudes:	Not Evaluated
Near Maximum Altitude:	Not Evaluated
Automatic ESVs:	Not enabled
Disabled DMEs:	None

DME/DME (Continued)										
DMEs Used										
#	Name	Lat/Lon	MAGVAR	Range	Type	Source	Critical	Status	Time	Distance
1	DAG	N34° 57' 44.84", W116° 34' 41.40"	15.0 E	40	L	IFPA	NO	Enabled	30.5 %	32.3 %
2	LAS	N36° 04' 46.93", W115° 09' 35.27"	15.0 E	130	H	IFPA	NO	Enabled	54 %	55.7 %
3	GOG	N35° 53' 39.30", W115° 29' 45.90"	0.0 E	130	H	IFPA	NO	Enabled	29.6 %	30.2 %
4	MMM	N36° 46' 09.31", W114° 16' 38.83"	16.0 E	40	L	IFPA	NO	Enabled	42.4 %	44.4 %
5	BLD	N35° 59' 44.84", W114° 51' 48.88"	15.0 E	130	H	IFPA	NO	Enabled	37.3 %	38.2 %

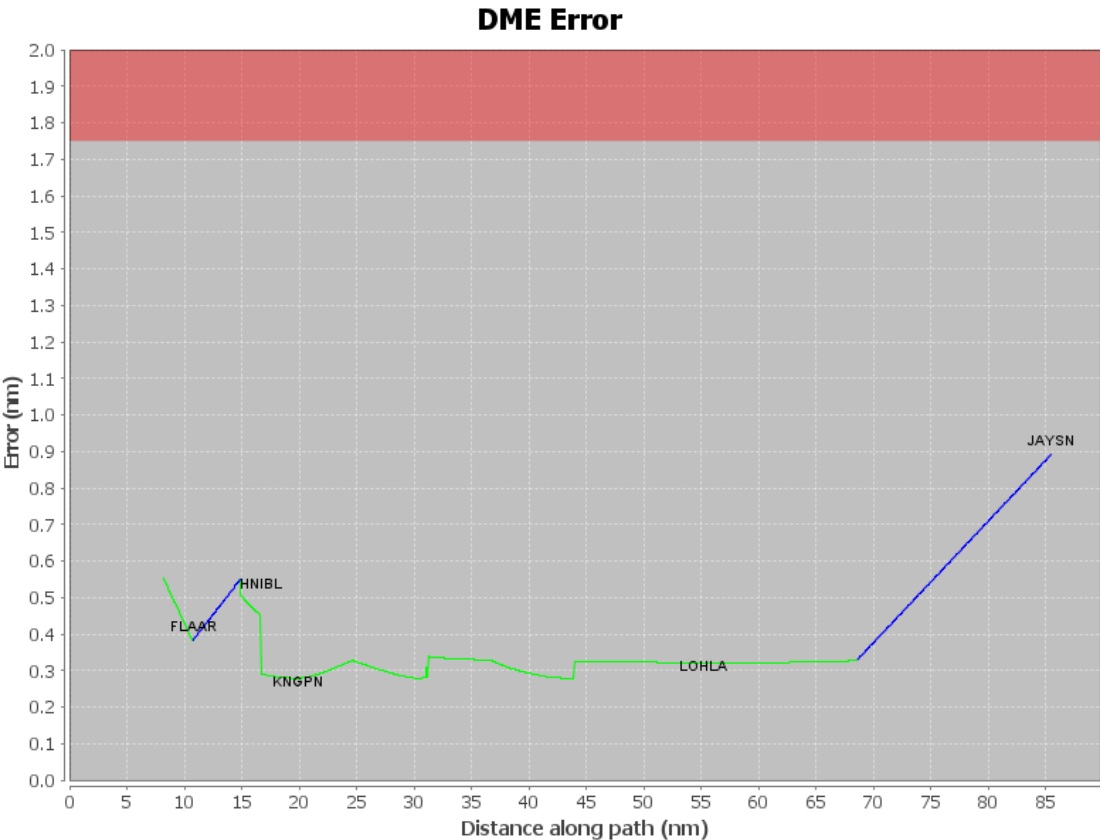
DME DME Assessment Results for LOHLA3 path KLAS:RW08R:DER_JAYSN

Flight Check DME Selection						
Distance [NM]	Selected DMEs					Alternate
0.0						
8.2	LAS	BLD				
10.8						
14.9	GOG	LAS				
17.5	LAS	BLD	GOG			
19.9	GOG	LAS				
21.0	LAS	BLD	GOG			
21.3	GOG	LAS				
29.8	GOG	LAS	MMM	BLD		
30.5	GOG	LAS	BLD			
31.0	LAS	BLD	MMM			
31.2	GOG	LAS	BLD			
31.2	MMM	BLD				
34.2	MMM	BLD	GOG			
38.4	GOG	BLD	LAS	MMM		
40.9	GOG	LAS	BLD	MMM	DAG	
43.9	MMM	LAS	DAG	BLD		
57.5	DAG	LAS	MMM			
67.2	DAG	MMM				
68.6						

Inertial Drift Segments			
#	Start Location	End Location	Length [NM]
1	N36° 04' 25.17", W115° 07' 30.36"	N36° 03' 24.88", W114° 57' 34.21"	8.1431
2	N36° 02' 55.02", W114° 54' 25.66"	N35° 59' 03.67", W114° 52' 57.26"	4.0363
3	N36° 23' 41.58", W115° 46' 08.10"	N36° 33' 53.41", W116° 02' 47.26"	16.854

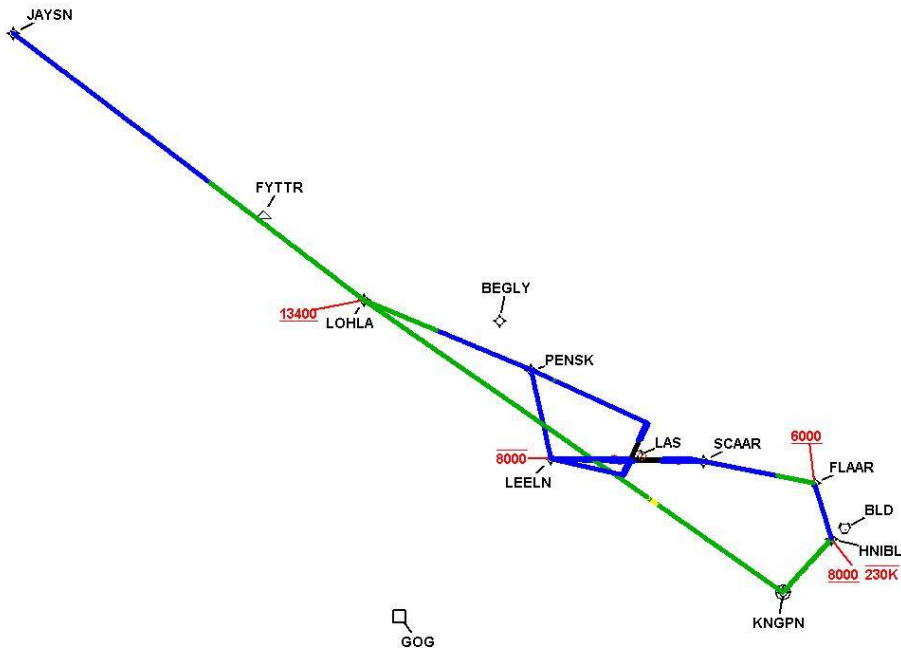
Available DMEs by Waypoints		
Waypoint Before	Waypoint After	DME List
KLAS:RW08R:DER	SCAAR	
SCAAR	FLAAR	BLD, LAS
FLAAR	HNIBL	
HNIBL	KNGPN	BLD, GOG, LAS
KNGPN	LOHLA	BLD, DAG, MMM, GOG, LAS
LOHLA	JAYSN	DAG, BLD, MMM, LAS

User Data Files								
#	File Name							
1	UserDMEsKLAS [IFPA] LOHLA1 SID_20191204_2040 MST.udt							
User DMEs								
#	Name	Lat/Lon	MAGVAR	Range	Elevation [ft]	Frequency	Replaces	Status
1	DAG FAA 704130-36 DAG [IFPA]	N34° 57' 44.84", W116° 34' 41.40"	15.0 E	40	1760	113.2	DAG FAA 704130-36	
ESV:		Bearing [True]: 24.0° to 42.0° Bearing [Mag]: 9.0° to 27.0°				Arc Distance: Out to 99.0 NM Altitude: 12200.0 to 16000.0 ft		
2	MMM FAA 698159-45 MMM [IFPA]	N36° 46' 09.31", W114° 16' 38.83"	16.0 E	40	2106.3	114.3	MMM FAA 698159-45	
ESV:		Bearing [True]: 222.0° to 255.0° Bearing [Mag]: 206.0° to 239.0°				Arc Distance: Out to 79.0 NM Altitude: 10800.0 to 16000.0 ft		



DME DME Assessment Results for LOHLA3 path KLAS:RW08R:DER_JAYSN

Graphic Depiction 1



DME DME Assessment Results for LOHLA3 path KLAS:RW08R:DER_JAYSN

Graphic Depiction 2



DME DME Assessment Results for LOHLA3 path KLAS:RW19L:DER_LOHLA

Results Summary

Flyability:	Completed
DME/DME:	Completed - No Critical DMEs
Name:	Bob CTR Graham
Project File:	C:\Users\Bob CTR Graham\Desktop\AREA NAV Projects and TARGETS Files\LAS METROPLEX\POST-IMPLEMENTATION WORK\LOHLA3 SID_3-24-22\20210910_LOHLA.tgs
Output File:	C:\Users\Bob CTR Graham\Desktop\AREA NAV Projects and TARGETS Files\LAS METROPLEX\POST-IMPLEMENTATION WORK\LOHLA3 SID_3-24-22\FINAL DOCS\KLAS [IFPA] LOHLA3 20210910_0947 PDT\KLAS-RW19L-DER_LOHLA\KLAS LOHLA3 SID KLAS RW19L LOHLA 20210910_0947 PDT.pdf
Procedure Name:	LOHLA3
Software: DmeDmePlugin:	6.3.0
Date/Time:	09/10/2021 09:47 PDT
Databases:	DTED MAX

Failures

No Failures

Warnings

No Warnings

Notes For Flight Check

None

Flight Plan

Name	Type	Lat/Lon	Altitude (ft)	VNAV Mode	Ground Speed (kts)	Turn Type	Leg Type
KLAS:RW19L:DER	WP	N36° 04' 27.26", W115° 10' 02.96"	2169.8	VNAV	130	FLY_BY	TF
LEELN	WP	N36° 04' 35.00", W115° 16' 54.00"	4844.1	VNAV	200	FLY_BY	TF
PENSK	WP	N36° 10' 42.97", W115° 18' 36.15"	7279	VNAV	200	FLY_BY	TF
LOHLA	WP	N36° 15' 31.32", W115° 32' 53.34"	13400	VNAV	240	FLY_BY	TF

Climb Gradient:
470.0 ft/NM up to 10300.0 ft MSL
200.0 ft/NM

Flyability

Flight Type:	SID
Selected Airport:	KLAS [IFPA]
Climb Gradient:	470.0 ft/NM up to 10300.0 ft MSL 200.0 ft/NM
Speeds:	130 at the Runway DER
	145 at the end of the VA or VI leg
	200 Ground Speed to 11000 FT
	240 Ground Speed to 18000 FT
	260 Ground Speed to 24000 FT
	340 Ground Speed above 24000 FT
Descent During a Turn:	Allowed
VNAV Mode:	Flight Plan

DME DME Assessment Results for LOHLA3 path KLAS:RW19L:DER_LOHLA

DME/DME	
RNP:	RNP 2
Flight Mode:	Manual
Line of Sight (DTED Level 0 Max):	Evaluated
Inertial Drift:	Enabled
Initial Drift:	0.558 NM
INS Drift Rate:	8.0 NM/Hour
Range Mode:	OSV
RNP Edges:	Evaluated
Min DME Range:	3.0 NM
DME Types:	DME, VOR-DME, VORTAC
DME Include Angles:	30 to 150
Critical DMEs:	Allowed
DoD Facilities:	Not included
Foreign Facilities:	Not included
High DMEs:	Included
Low DMEs:	Included
Terminal DMEs:	Included
Flight Check DMEs:	Not selected
Higher Altitudes:	Not Evaluated
Near Maximum Altitude:	Not Evaluated
Automatic ESVs:	Not enabled
Disabled DMEs:	None

DME/DME (Continued)										
DMEs Used										
#	Name	Lat/Lon	MAGVAR	Range	Type	Source	Critical	Status	Time	Distance
1	DAG	N34° 57' 44.84", W116° 34' 41.40"	15.0 E	40	L	IFPA	NO	Enabled	8.4 %	10.3 %
2	LAS	N36° 04' 46.93", W115° 09' 35.27"	15.0 E	130	H	IFPA	NO	Enabled	18.3 %	22.5 %
3	MMM	N36° 46' 09.31", W114° 16' 38.83"	16.0 E	40	L	IFPA	NO	Enabled	18.3 %	22.5 %
4	BLD	N35° 59' 44.84", W114° 51' 48.88"	15.0 E	130	H	IFPA	NO	Enabled	18.3 %	22.5 %

Flight Check DME Selection						
Distance [NM]	Selected DMEs					Alternate
0.0						
19.5	MMM	LAS	BLD			
22.5	DAG	LAS	BLD	MMM		

Inertial Drift Segments			
#	Start Location	End Location	Length [NM]
1	N36° 04' 25.32", W115° 10' 04.07"	N36° 13' 21.50", W115° 26' 26.57"	19.4138

Available DMEs by Waypoints		
Waypoint Before	Waypoint After	DME List
KLAS:RW19L:DER	LEELN	
LEELN	PENSK	
PENSK	LOHLA	BLD, DAG, MMM, LAS

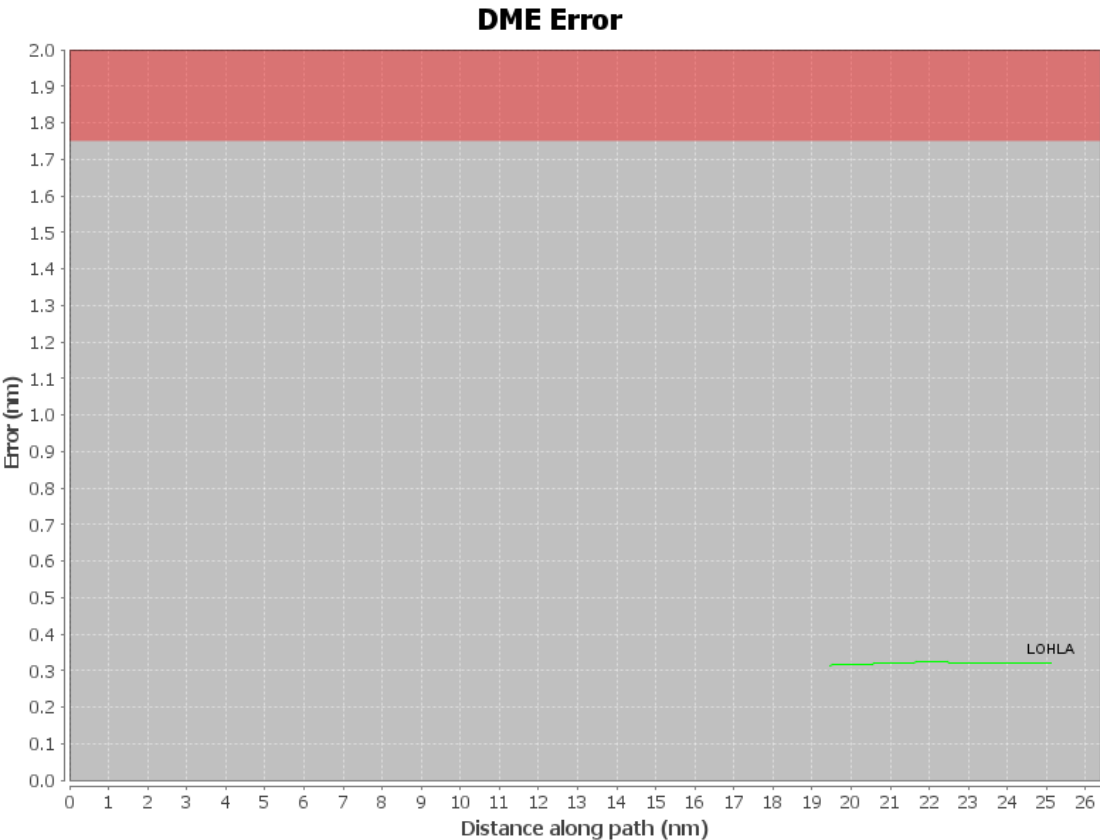
DME DME Assessment Results for LOHLA3 path KLAS:RW19L:DER_LOHLA

User Data Files

#	File Name
1	UserDMEsKLAS [IFPA] LOHLA1 SID_20191204_2040 MST.udt

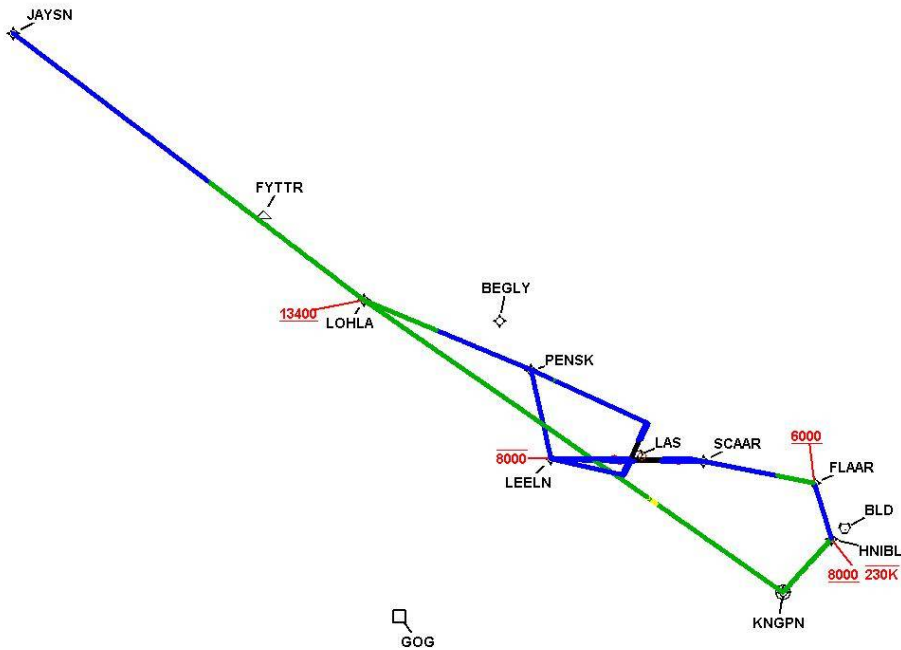
User DMEs

#	Name	Lat/Lon	MAGVAR	Range	Elevation [ft]	Frequency	Replaces	Status
1	DAG FAA 704130-36 DAG [IFPA]	N34° 57' 44.84", W116° 34' 41.40"	15.0 E	40	1760	113.2	DAG FAA 704130-36	
ESV:		Bearing [True]: 24.0° to 42.0° Bearing [Mag]: 9.0° to 27.0°				Arc Distance: Out to 99.0 NM Altitude: 12200.0 to 16000.0 ft		
2	MMM FAA 698159-45 MMM [IFPA]	N36° 46' 09.31", W114° 16' 38.83"	16.0 E	40	2106.3	114.3	MMM FAA 698159-45	
ESV:		Bearing [True]: 222.0° to 255.0° Bearing [Mag]: 206.0° to 239.0°				Arc Distance: Out to 79.0 NM Altitude: 10800.0 to 16000.0 ft		



DME DME Assessment Results for LOHLA3 path KLAS:RW19L:DER_LOHLA

Graphic Depiction 1



DME DME Assessment Results for LOHLA3 path KLAS:RW19L:DER_LOHLA

Graphic Depiction 2



DME DME Assessment Results for LOHLA3 path KLAS:RW19R:DER_LEELN

Results Summary

Flyability:	Completed
DME/DME:	Completed - No Critical DMEs
Name:	Bob CTR Graham
Project File:	C:\Users\Bob CTR Graham\Desktop\AREA NAV Projects and TARGETS Files\LAS METROPLEX\POST-IMPLEMENTATION WORK\LOHLA3 SID_3-24-22\20210910_LOHLA.tgs
Output File:	C:\Users\Bob CTR Graham\Desktop\AREA NAV Projects and TARGETS Files\LAS METROPLEX\POST-IMPLEMENTATION WORK\LOHLA3 SID_3-24-22\FINAL DOCS\KLAS [IFPA] LOHLA3 20210910_0947 PDT\KLAS-RW19R-DER_LEELN\KLAS LOHLA3 SID KLAS RW19R LEELN 20210910_0947 PDT.pdf
Procedure Name:	LOHLA3
Software: DmeDmePlugin:	6.3.0
Date/Time:	09/10/2021 09:47 PDT
Databases:	DTED MAX

Failures

No Failures

Warnings

No Warnings

Notes For Flight Check

None

Flight Plan

Name	Type	Lat/Lon	Altitude (ft)	VNAV Mode	Ground Speed (kts)	Turn Type	Leg Type
KLAS:RW19R:DER	WP	N36° 04' 31.17", W115° 10' 13.31"	2176.1	VNAV	130	FLY_BY	TF
LEELN	WP	N36° 04' 35.00", W115° 16' 54.00"	4844.1	VNAV	200	FLY_BY	TF
Climb Gradient: 468.0 ft/NM up to 10300.0 ft MSL 200.0 ft/NM							

Flyability

Flight Type:	SID
Selected Airport:	KLAS [IFPA]
Climb Gradient:	468.0 ft/NM up to 10300.0 ft MSL 200.0 ft/NM
Speeds:	130 at the Runway DER
	145 at the end of the VA or VI leg
	200 Ground Speed to 11000 FT
	240 Ground Speed to 18000 FT
	260 Ground Speed to 24000 FT
	340 Ground Speed above 24000 FT
Descent During a Turn:	Allowed
VNAV Mode:	Flight Plan

DME DME Assessment Results for LOHLA3 path KLAS:RW19R:DER_LEELN

DME/DME	
RNP:	RNP 2
Flight Mode:	Manual
Line of Sight (DTED Level 0 Max):	Evaluated
Inertial Drift:	Enabled
Initial Drift:	0.558 NM
INS Drift Rate:	8.0 NM/Hour
Range Mode:	OSV
RNP Edges:	Evaluated
Min DME Range:	3.0 NM
DME Types:	DME, VOR-DME, VORTAC
DME Include Angles:	30 to 150
Critical DMEs:	Allowed
DoD Facilities:	Not included
Foreign Facilities:	Not included
High DMEs:	Included
Low DMEs:	Included
Terminal DMEs:	Included
Flight Check DMEs:	Not selected
Higher Altitudes:	Not Evaluated
Near Maximum Altitude:	Not Evaluated
Automatic ESVs:	Not enabled
Disabled DMEs:	None

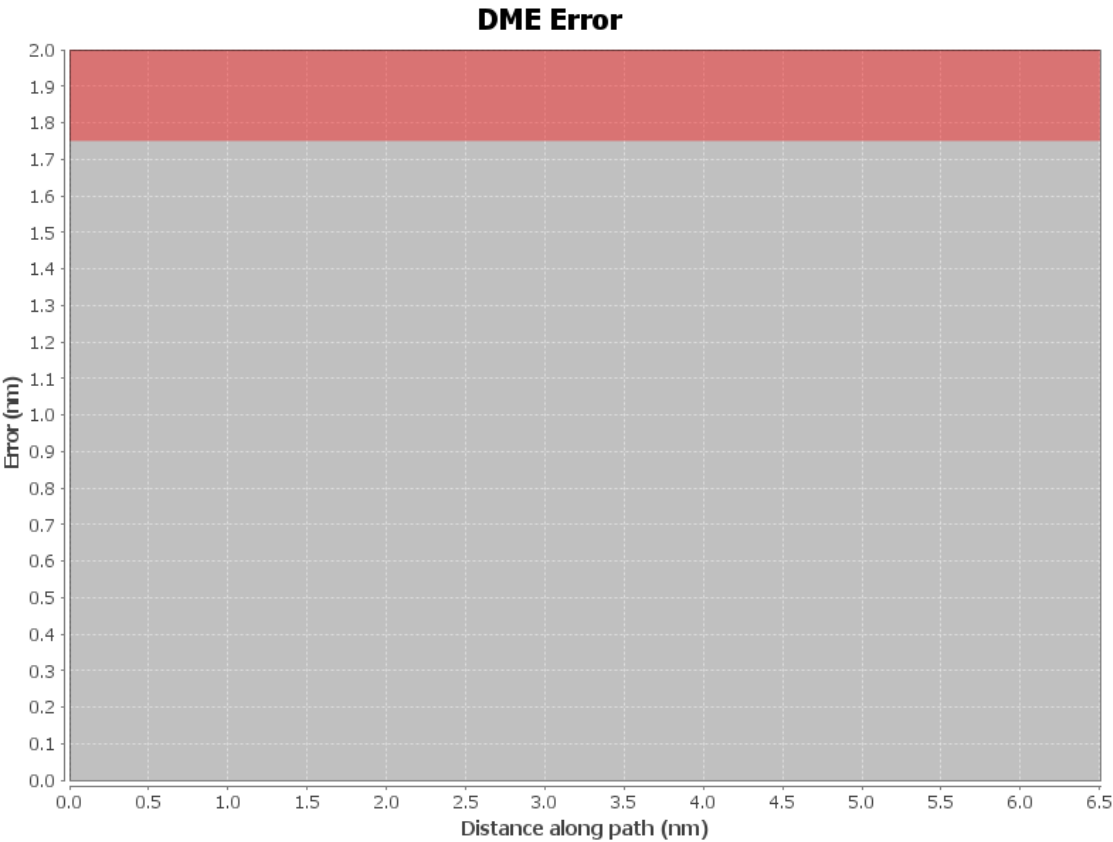
DME/DME (Continued)										
DMEs Used										
#	Name	Lat/Lon	MAGVAR	Range	Type	Source	Critical	Status	Time	Distance

Flight Check DME Selection						
Distance [NM]	Selected DMEs					Alternate
0.0						

Inertial Drift Segments			
#	Start Location	End Location	Length [NM]
1	N36° 04' 29.23", W115° 10' 14.42"	N36° 04' 35.00", W115° 16' 54.00"	6.1582

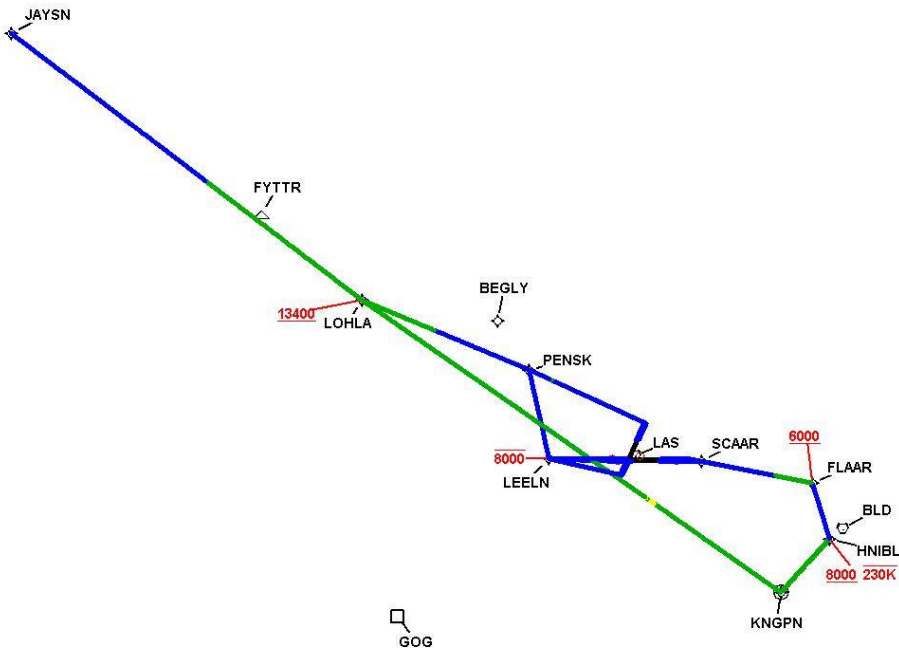
Available DMEs by Waypoints		
Waypoint Before	Waypoint After	DME List
KLAS:RW19R:DER	LEELN	

User Data Files								
#	File Name							
1	UserDMEsKLAS [IFPA] LOHLA1 SID_20191204_2040 MST.udt							
User DMEs								
#	Name	Lat/Lon	MAGVAR	Range	Elevation [ft]	Frequency	Replaces	Status
1	DAG FAA 704130-36 DAG [IFPA]	N34° 57' 44.84", W116° 34' 41.40"	15.0 E	40	1760	113.2	DAG FAA 704130-36	
ESV:		Bearing [True]: 24.0° to 42.0° Bearing [Mag]: 9.0° to 27.0°				Arc Distance: Out to 99.0 NM Altitude: 12200.0 to 16000.0 ft		
2	MMM FAA 698159-45 MMM [IFPA]	N36° 46' 09.31", W114° 16' 38.83"	16.0 E	40	2106.3	114.3	MMM FAA 698159-45	
ESV:		Bearing [True]: 222.0° to 255.0° Bearing [Mag]: 206.0° to 239.0°				Arc Distance: Out to 79.0 NM Altitude: 10800.0 to 16000.0 ft		



DME DME Assessment Results for LOHLA3 path KLAS:RW19R:DER_LEELN

Graphic Depiction 1



Graphic Depiction 2



DME DME Assessment Results for LOHLA3 path KLAS:RW26L:DER_LEELN

Results Summary

Flyability:	Completed
DME/DME:	Completed - No Critical DMEs
Name:	Bob CTR Graham
Project File:	C:\Users\Bob CTR Graham\Desktop\AREA NAV Projects and TARGETS Files\LAS METROPLEX\POST-IMPLEMENTATION WORK\LOHLA3 SID_3-24-22\20210910_LOHLA.tgs
Output File:	C:\Users\Bob CTR Graham\Desktop\AREA NAV Projects and TARGETS Files\LAS METROPLEX\POST-IMPLEMENTATION WORK\LOHLA3 SID_3-24-22\FINAL DOCS\KLAS [IFPA] LOHLA3 20210910_0947 PDT\KLAS-RW26L-DER_LEELN\KLAS LOHLA3 SID KLAS RW26L LEELN 20210910_0947 PDT.pdf
Procedure Name:	LOHLA3
Software: DmeDmePlugin:	6.3.0
Date/Time:	09/10/2021 09:47 PDT
Databases:	DTED MAX

Failures

No Failures

Warnings

No Warnings

Notes For Flight Check

None

Flight Plan

Name	Type	Lat/Lon	Altitude (ft)	VNAV Mode	Ground Speed (kts)	Turn Type	Leg Type
KLAS:RW26L:DER	WP	N36° 04' 25.06", W115° 09' 41.16"	2156.9	VNAV	130	FLY_OVER	TF
LEELN	WP	N36° 04' 35.00", W115° 16' 54.00"	4844.1	VNAV	200	FLY_BY	TF
Climb Gradient: 500.0 ft/NM up to 2682.0 ft MSL 480.0 ft/NM up to 10300.0 ft MSL 200.0 ft/NM							

Flyability

Flight Type:	SID
Selected Airport:	KLAS [IFPA]
Climb Gradient:	500.0 ft/NM up to 2682.0 ft MSL 480.0 ft/NM up to 10300.0 ft MSL 200.0 ft/NM
Speeds:	130 at the Runway DER
	145 at the end of the VA or VI leg
	200 Ground Speed to 11000 FT
	240 Ground Speed to 18000 FT
	260 Ground Speed to 24000 FT
	340 Ground Speed above 24000 FT
Descent During a Turn:	Allowed
VNAV Mode:	Flight Plan

DME DME Assessment Results for LOHLA3 path KLAS:RW26L:DER_LEELN

DME/DME	
RNP:	RNP 2
Flight Mode:	Manual
Line of Sight (DTED Level 0 Max):	Evaluated
Inertial Drift:	Enabled
Initial Drift:	0.558 NM
INS Drift Rate:	8.0 NM/Hour
Range Mode:	OSV
RNP Edges:	Evaluated
Min DME Range:	3.0 NM
DME Types:	DME, VOR-DME, VORTAC
DME Include Angles:	30 to 150
Critical DMEs:	Allowed
DoD Facilities:	Not included
Foreign Facilities:	Not included
High DMEs:	Included
Low DMEs:	Included
Terminal DMEs:	Included
Flight Check DMEs:	Not selected
Higher Altitudes:	Not Evaluated
Near Maximum Altitude:	Not Evaluated
Automatic ESVs:	Not enabled
Disabled DMEs:	None

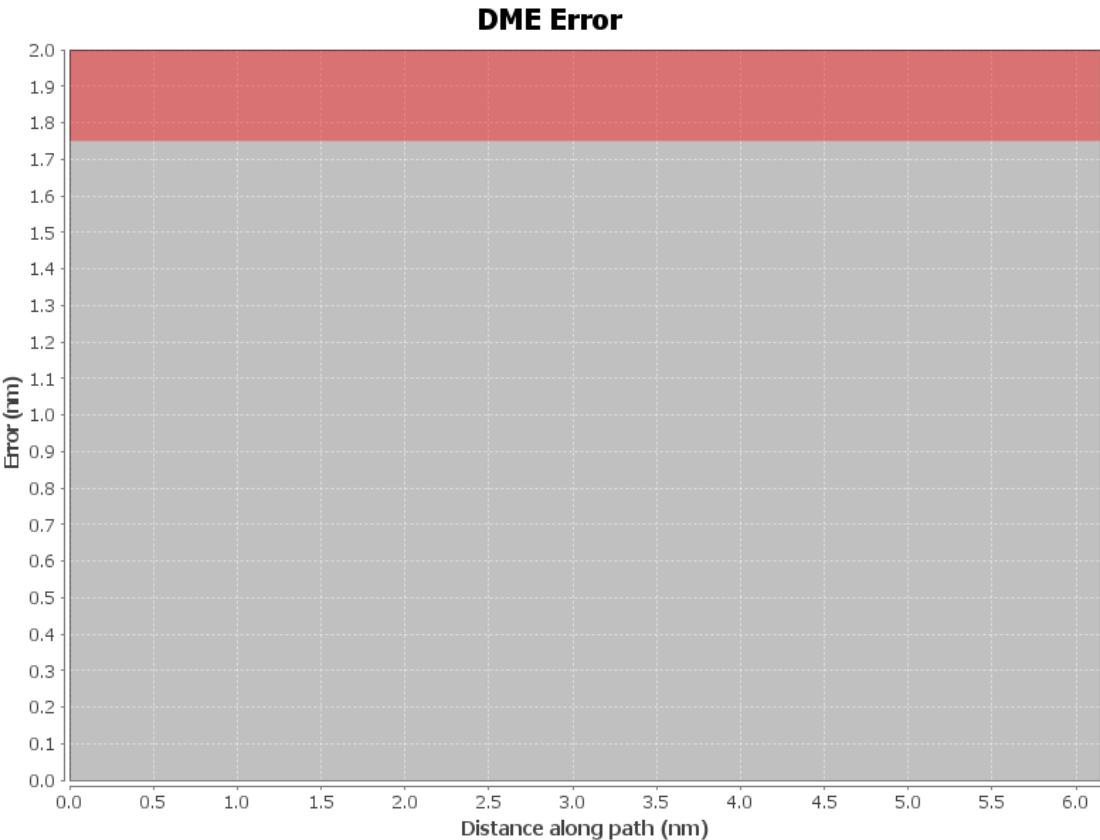
DME/DME (Continued)										
DMEs Used										
#	Name	Lat/Lon	MAGVAR	Range	Type	Source	Critical	Status	Time	Distance

Flight Check DME Selection						
Distance [NM]	Selected DMEs					Alternate
0.0						

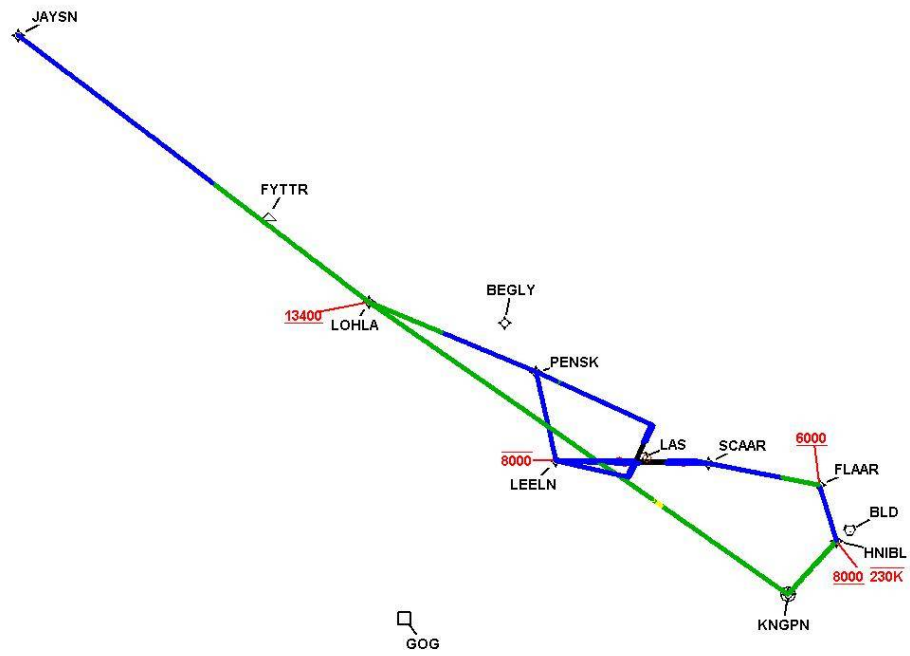
Inertial Drift Segments			
#	Start Location	End Location	Length [NM]
1	N36° 04' 25.06", W115° 09' 43.75"	N36° 04' 35.00", W115° 16' 54.00"	5.813

Available DMEs by Waypoints		
Waypoint Before	Waypoint After	DME List
KLAS:RW26L:DER	LEELN	

User Data Files								
#	File Name							
1	UserDMEsKLAS [IFPA] LOHLA1 SID_20191204_2040 MST.udt							
User DMEs								
#	Name	Lat/Lon	MAGVAR	Range	Elevation [ft]	Frequency	Replaces	Status
1	DAG FAA 704130-36 DAG [IFPA]	N34° 57' 44.84", W116° 34' 41.40"	15.0 E	40	1760	113.2	DAG FAA 704130-36	
ESV:		Bearing [True]: 24.0° to 42.0° Bearing [Mag]: 9.0° to 27.0°				Arc Distance: Out to 99.0 NM Altitude: 12200.0 to 16000.0 ft		
2	MMM FAA 698159-45 MMM [IFPA]	N36° 46' 09.31", W114° 16' 38.83"	16.0 E	40	2106.3	114.3	MMM FAA 698159-45	
ESV:		Bearing [True]: 222.0° to 255.0° Bearing [Mag]: 206.0° to 239.0°				Arc Distance: Out to 79.0 NM Altitude: 10800.0 to 16000.0 ft		



Graphic Depiction 1



DME DME Assessment Results for LOHLA3 path KLAS:RW26L:DER_LEELN

Graphic Depiction 2



DME DME Assessment Results for LOHLA3 path KLAS:RW26R:DER_LEELN

Results Summary

Flyability:	Completed
DME/DME:	Completed - No Critical DMEs
Name:	Bob CTR Graham
Project File:	C:\Users\Bob CTR Graham\Desktop\AREA NAV Projects and TARGETS Files\LAS METROPLEX\POST-IMPLEMENTATION WORK\LOHLA3 SID_3-24-22\20210910_LOHLA.tgs
Output File:	C:\Users\Bob CTR Graham\Desktop\AREA NAV Projects and TARGETS Files\LAS METROPLEX\POST-IMPLEMENTATION WORK\LOHLA3 SID_3-24-22\FINAL DOCS\KLAS [IFPA] LOHLA3 20210910_0947 PDT\KLAS-RW26R-DER_LEELN\KLAS LOHLA3 SID KLAS RW26R LEELN 20210910_0947 PDT.pdf
Procedure Name:	LOHLA3
Software: DmeDmePlugin:	6.3.0
Date/Time:	09/10/2021 09:47 PDT
Databases:	DTED MAX

Failures

No Failures

Warnings

No Warnings

Notes For Flight Check

None

Flight Plan

Name	Type	Lat/Lon	Altitude (ft)	VNAV Mode	Ground Speed (kts)	Turn Type	Leg Type
KLAS:RW26R:DER	WP	N36° 04' 34.92", W115° 10' 12.69"	2154.9	VNAV	130	FLY_OVER	TF
LEELN	WP	N36° 04' 35.00", W115° 16' 54.00"	4844.1	VNAV	200	FLY_BY	TF
Climb Gradient: 500.0 ft/NM up to 2682.0 ft MSL 495.0 ft/NM up to 10300.0 ft MSL 200.0 ft/NM							

Flyability

Flight Type:	SID
Selected Airport:	KLAS [IFPA]
Climb Gradient:	500.0 ft/NM up to 2682.0 ft MSL 495.0 ft/NM up to 10300.0 ft MSL 200.0 ft/NM
Speeds:	130 at the Runway DER
	145 at the end of the VA or VI leg
	200 Ground Speed to 11000 FT
	240 Ground Speed to 18000 FT
	260 Ground Speed to 24000 FT
	340 Ground Speed above 24000 FT
Descent During a Turn:	Allowed
VNAV Mode:	Flight Plan

DME DME Assessment Results for LOHLA3 path KLAS:RW26R:DER_LEELN

DME/DME	
RNP:	RNP 2
Flight Mode:	Manual
Line of Sight (DTED Level 0 Max):	Evaluated
Inertial Drift:	Enabled
Initial Drift:	0.558 NM
INS Drift Rate:	8.0 NM/Hour
Range Mode:	OSV
RNP Edges:	Evaluated
Min DME Range:	3.0 NM
DME Types:	DME, VOR-DME, VORTAC
DME Include Angles:	30 to 150
Critical DMEs:	Allowed
DoD Facilities:	Not included
Foreign Facilities:	Not included
High DMEs:	Included
Low DMEs:	Included
Terminal DMEs:	Included
Flight Check DMEs:	Not selected
Higher Altitudes:	Not Evaluated
Near Maximum Altitude:	Not Evaluated
Automatic ESVs:	Not enabled
Disabled DMEs:	None

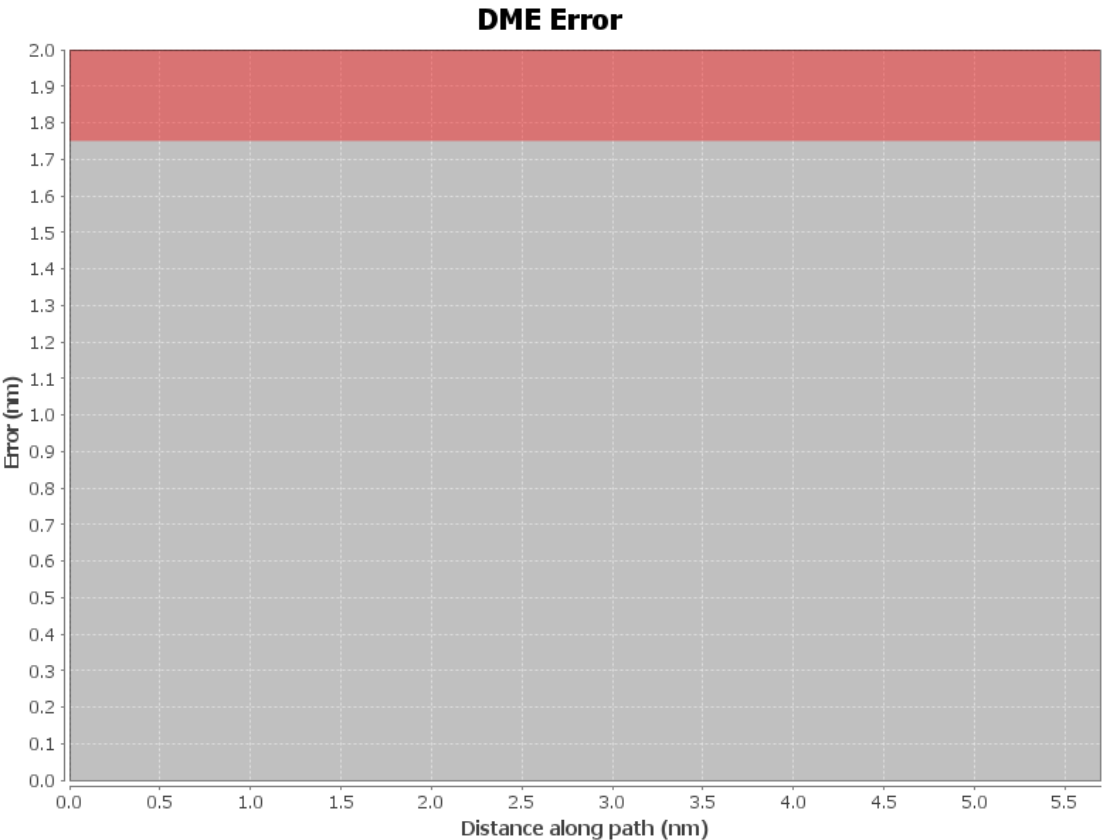
DME/DME (Continued)										
DMEs Used										
#	Name	Lat/Lon	MAGVAR	Range	Type	Source	Critical	Status	Time	Distance

Flight Check DME Selection						
Distance [NM]	Selected DMEs					Alternate
0.0						

Inertial Drift Segments			
#	Start Location	End Location	Length [NM]
1	N36° 04' 34.92", W115° 10' 15.29"	N36° 04' 35.00", W115° 16' 54.00"	5.3839

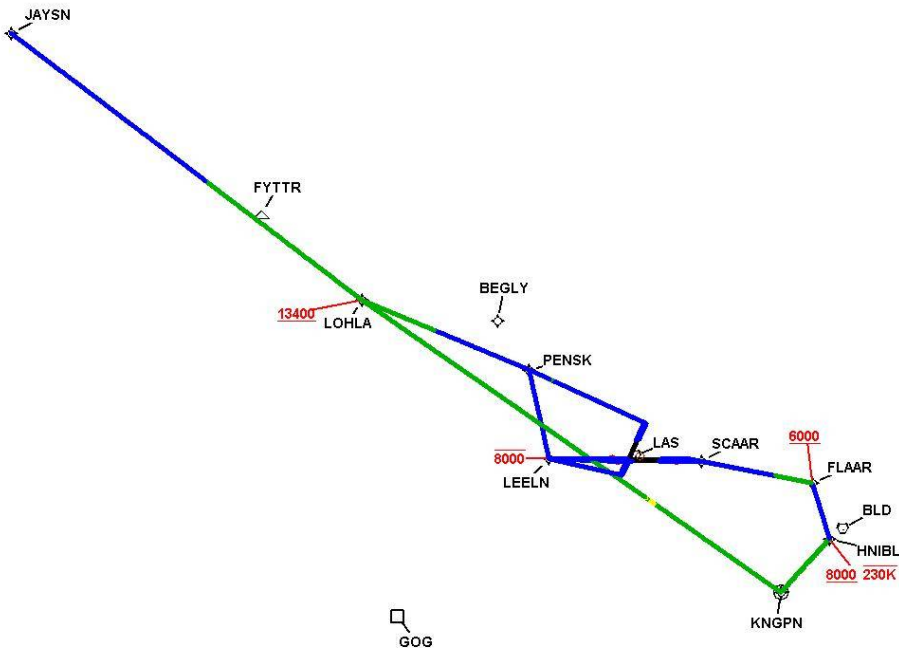
Available DMEs by Waypoints		
Waypoint Before	Waypoint After	DME List
KLAS:RW26R:DER	LEELN	

User Data Files								
#	File Name							
1	UserDMEsKLAS [IFPA] LOHLA1 SID_20191204_2040 MST.udt							
User DMEs								
#	Name	Lat/Lon	MAGVAR	Range	Elevation [ft]	Frequency	Replaces	Status
1	DAG FAA 704130-36 DAG [IFPA]	N34° 57' 44.84", W116° 34' 41.40"	15.0 E	40	1760	113.2	DAG FAA 704130-36	
ESV:		Bearing [True]: 24.0° to 42.0° Bearing [Mag]: 9.0° to 27.0°				Arc Distance: Out to 99.0 NM Altitude: 12200.0 to 16000.0 ft		
2	MMM FAA 698159-45 MMM [IFPA]	N36° 46' 09.31", W114° 16' 38.83"	16.0 E	40	2106.3	114.3	MMM FAA 698159-45	
ESV:		Bearing [True]: 222.0° to 255.0° Bearing [Mag]: 206.0° to 239.0°				Arc Distance: Out to 79.0 NM Altitude: 10800.0 to 16000.0 ft		



DME DME Assessment Results for LOHLA3 path KLAS:RW26R:DER_LEELN

Graphic Depiction 1



DME DME Assessment Results for LOHLA3 path KLAS:RW26R:DER_LEELN

Graphic Depiction 2

