

DME DME Assessment Results for FISSK5 path DROSE_TACTT

Results Summary

Flyability:	Completed
DME/DME:	Completed - No Critical DMEs
Name:	Jose G-CTR Medina
Project File:	C:\Users\Jose G-CTR Medina\Documents\01. Projects\DME EVALUATIONS\KMDW\FISSK FIVE\KMDW STAR FISSK FIVE DME 20220823 (email).tgs
Output File:	C:\Users\Jose G-CTR Medina\Documents\01. Projects\DME EVALUATIONS\KMDW\FISSK FIVE\KMDW [IFPA] FISSK5 20220823_1043 CDT\DROSE_TACTT\KMDW FISSK5 RNAV STAR DROSE TACTT 20220823_1043 CDT.pdf
Procedure Name:	FISSK5
Software: DmeDmePlugin:	6.5.1
Date/Time:	08/23/2022 10:43 CDT
Databases:	DTED level 0 max

Failures

No Failures

Warnings

No Warnings

Informational

No Informational

Notes For Flight Check

None

Flight Plan

Name	Type	Lat/Lon	Altitude (ft)	VNAV Mode	Ground Speed (kts)	Turn Type	Leg Type
DROSE	WP	N40° 31' 39.4100", W086° 03' 28.8200"	3400	VNAV	200	FLY_BY	TF
TROLY	WP	N40° 41' 40.3500", W086° 03' 15.0900"	3400	VNAV	200	FLY_BY	TF
GOTNE	WP	N40° 57' 40.5800", W086° 02' 52.9500"	3400	VNAV	200	FLY_BY	TF
FISSK	WP	N41° 02' 57.0000", W086° 25' 58.0000"	3400	VNAV	200	FLY_BY	TF
VEECK	WP	N41° 07' 31.0000", W086° 37' 09.0000"	3400	VNAV	200	FLY_BY	TF
OZZEY	WP	N41° 23' 57.0000", W086° 56' 00.6000"	3400	VNAV	200	FLY_BY	TF
AZUMO	WP	N41° 27' 27.9400", W087° 00' 17.2700"	3400	VNAV	200	FLY_BY	TF
HALIE	WP	N41° 30' 57.8500", W087° 09' 31.9500"	3400	VNAV	200	FLY_BY	TF
GERMN	WP	N41° 42' 06.6000", W087° 15' 06.5800"	3400	VNAV	200	FLY_BY	TF
LNANE	WP	N41° 45' 18.3800", W087° 16' 42.9200"	3000	VNAV	200	FLY_BY	TF
BOCAH	WP	N41° 51' 00.7835", W087° 20' 15.4901"	3000	VNAV	200	FLY_BY	TF
TACTT	WP	N41° 51' 00.8200", W087° 26' 16.7700"	3000	VNAV	200	FLY_BY	TF

DME DME Assessment Results for FISSK5 path DROSE_TACTT

Flyability	
Flight Type:	RNAV_STAR
Selected Airport:	KMDW [IFPA]
Climb Gradient:	None assigned
Speeds:	200 Ground Speed to 11000 FT
	240 Ground Speed to 18000 FT
	260 Ground Speed to 24000 FT
	340 Ground Speed above 24000 FT
Descent During a Turn:	Allowed
VNAV Mode:	Flight Plan

DME/DME	
RNP:	RNP 2
Flight Mode:	Manual
Line of Sight (DTED Level 0 Max):	Evaluated
Inertial Drift:	Enabled
Initial Drift:	0.558 NM
INS Drift Rate:	8.0 NM/Hour
Range Mode:	OSV
RNP Edges:	Evaluated
Min DME Range:	3.0 NM
DME Types:	DME, VOR-DME, VORTAC
DME Include Angles:	30 to 150
Critical DMEs:	Allowed
DoD Facilities:	Not included
Foreign Facilities:	Not included
High DMEs:	Included
Low DMEs:	Included
Terminal DMEs:	Included
Flight Check DMEs:	Not selected
Higher Altitudes:	Not Evaluated
Near Maximum Altitude:	Not Evaluated
Automatic ESVs:	Not enabled
Disabled DMEs:	LFD

DME DME Assessment Results for FISSK5 path DROSE_TACTT

DME/DME (Continued)										
DMEs Used										
#	Name	Lat/Lon	MAGVAR	Range	Type	Source	Critical	Status	Time	Distance
1	OBK	N42° 13' 16.9555", W087° 57' 06.0134"	2.0 W	130	DH	IFPA	NO	Enabled	20.1 %	20.1 %
2	OKK	N40° 31' 40.0078", W086° 03' 28.7950"	5.0 W	130	H	IFPA	NO	Enabled	38.3 %	38.3 %
3	GSH	N41° 31' 30.5586", W086° 01' 40.6316"	0.0 E	130	H	IFPA	NO	Enabled	36 %	36 %
4	MZZ	N40° 29' 35.9904", W085° 40' 45.3000"	3.0 W	40	L	IFPA	NO	Enabled	27.8 %	27.8 %
5	GIJ	N41° 46' 07.0005", W086° 19' 06.4268"	0.0 E	130	H	IFPA	NO	Enabled	12 %	12 %
6	IKK	N41° 04' 27.7626", W087° 51' 00.5883"	0.0 E	40	L	IFPA	NO	Enabled	3.1 %	3.1 %
7	CGT	N41° 30' 36.0237", W087° 34' 17.5660"	2.0 E	40	L	IFPA	NO	Enabled	22.7 %	22.7 %
8	VHP	N39° 48' 53.0246", W086° 22' 02.9992"	1.0 E	130	H	IFPA	NO	Enabled	1.7 %	1.7 %
9	MIE	N40° 14' 14.2533", W085° 23' 38.5315"	3.0 W	40	L	IFPA	NO	Enabled	2.7 %	2.7 %
10	EON	N41° 16' 10.6765", W087° 47' 27.7925"	2.0 E	40	L	IFPA	NO	Enabled	18 %	18 %
11	OXI	N41° 19' 19.4116", W086° 38' 57.4387"	0.0 E	130	H	IFPA	NO	Enabled	65 %	65 %
12	BVT	N40° 33' 22.2178", W087° 04' 09.7481"	1.0 E	130	H	IFPA	NO	Enabled	44.2 %	44.2 %
13	GCO	N41° 59' 38.7200", W087° 54' 08.3800"	0.0 E	40	L	IFPA	NO	Enabled	16.4 %	16.4 %
14	FWA	N40° 58' 44.6315", W085° 11' 17.0092"	6.0 W	130	H	IFPA	NO	Enabled	22.3 %	22.4 %
15	LFD	N42° 03' 44.9620", W084° 45' 54.4770"	5.0 W	40	L	IFPA	NO	Disabled		

DME DME Assessment Results for FISSK5 path DROSE_TACTT

Flight Check DME Selection						
Distance [NM]	Selected DMEs					Alternate
0.0	VHP	MIE	MZZ	BVT	FWA	
2.0	FWA	MIE	MZZ	BVT		
3.0	BVT	OKK	FWA	MIE	MZZ	
3.2	BVT	OKK	FWA	MZZ		
18.4	FWA	OKK	MZZ			
20.1	FWA	OKK	GSH	MZZ		
21.5	OKK	FWA	GSH	MZZ	OXI	
22.6	GSH	OXI	OKK	MZZ		
24.1	OKK	FWA	GSH	MZZ	OXI	
27.1	GSH	OXI	OKK			
27.5	GSH	OXI	OKK	MZZ		
30.5	BVT	MZZ	OXI	OKK	GSH	
32.2	BVT	OXI	OKK	GSH		
46.9	BVT	OXI	GSH			
53.8	GSH	OXI				
58.4						
65.1	BVT	OXI				
67.7	BVT	OXI	GIJ			
68.3	CGT	GIJ	OXI	GSH		
71.3	BVT	OXI	GIJ			
73.2	BVT	OXI	CGT	GIJ		
74.0	BVT	CGT	OXI	IKK	GIJ	
74.2	BVT	CGT	OXI	GIJ		
74.9	BVT	CGT	OXI	GIJ	IKK	
77.1	GIJ	OXI	IKK	CGT		
78.4	GIJ	OXI	CGT			
79.9	GIJ	OXI	EON	CGT		
80.4	GIJ	OXI				
81.5						
82.0	EON	OXI				
90.7	EON	OXI	CGT			
91.2	EON	OBK	OXI	CGT		
93.3	EON	OBK	OXI			
95.5	EON	OBK	OXI	GCO		
101.0	EON	OXI	OBK	CGT	GCO	
102.1	CGT	OBK	OXI	GCO		
103.1	CGT	OBK	GCO			

Inertial Drift Segments			
#	Start Location	End Location	Length [NM]
1	N41° 10' 57.5141", W086° 41' 04.9312"	N41° 16' 01.9987", W086° 46' 53.8266"	6.7065
2	N41° 27' 59.2504", W087° 01' 39.8189"	N41° 28' 11.1738", W087° 02' 11.2719"	0.4413

DME DME Assessment Results for FISSK5 path DROSE_TACTT

Available DMEs by Waypoints

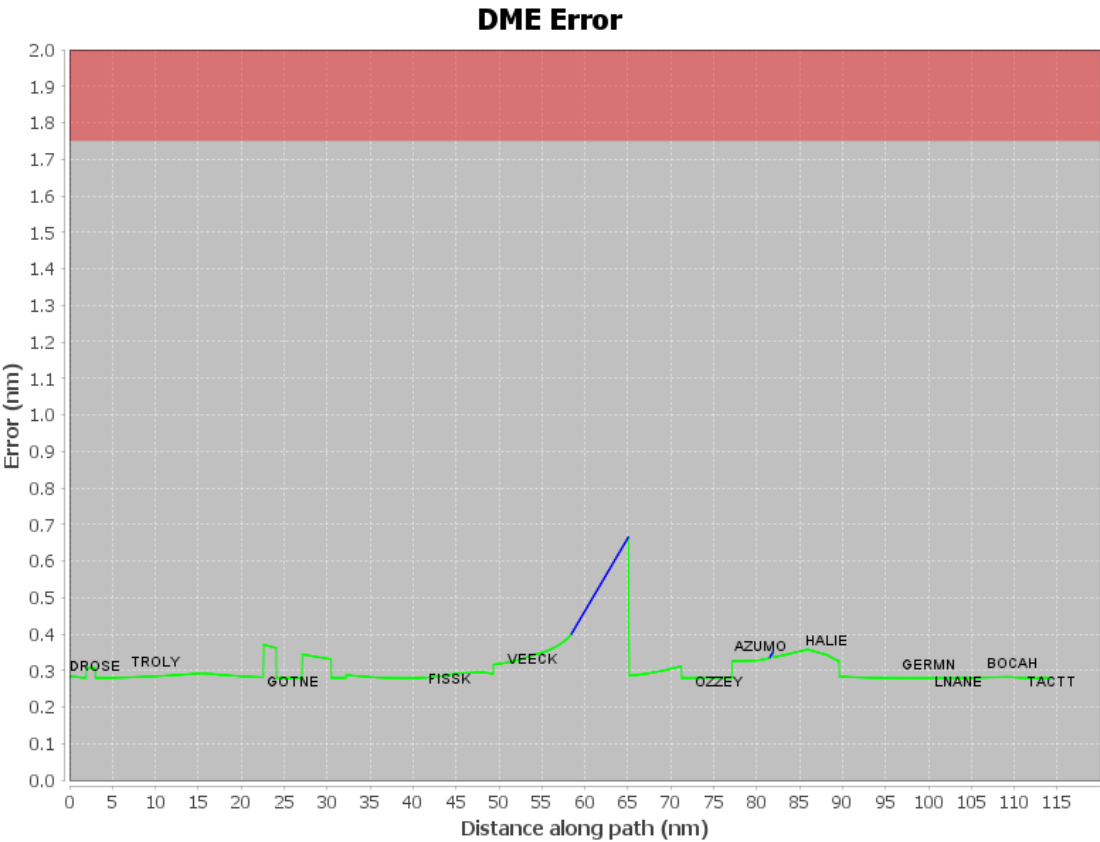
Waypoint Before	Waypoint After	DME List	Suggested DMEs
DROSE	TROLY	FWA, BVT, MIE, MZZ, OKK, VHP	
TROLY	GOTNE	FWA, BVT, OXI, MZZ, GSH, OKK	
GOTNE	FISSK	FWA, OXI, BVT, MZZ, GSH, OKK	
FISSK	VEECK	OXI, BVT, GSH, OKK	
VEECK	OZZEY	OXI, BVT, CGT, IKK, GIJ, GSH	
OZZEY	AZUMO	CGT, OXI, BVT, EON, IKK, GIJ	
AZUMO	HALIE	OXI, EON, GIJ	
HALIE	GERMN	OXI, CGT, GCO, EON, OBK	
GERMN	LNANE	OXI, CGT, GCO, EON, OBK	
LNANE	BOCAH	CGT, GCO, OBK	
BOCAH	TACTT	CGT, GCO, OBK	

User Data Files

#	File Name
1	UserDMEsKMDW [IFPA] FISSK5 RNAV STAR_20220308_1451 CST.udt

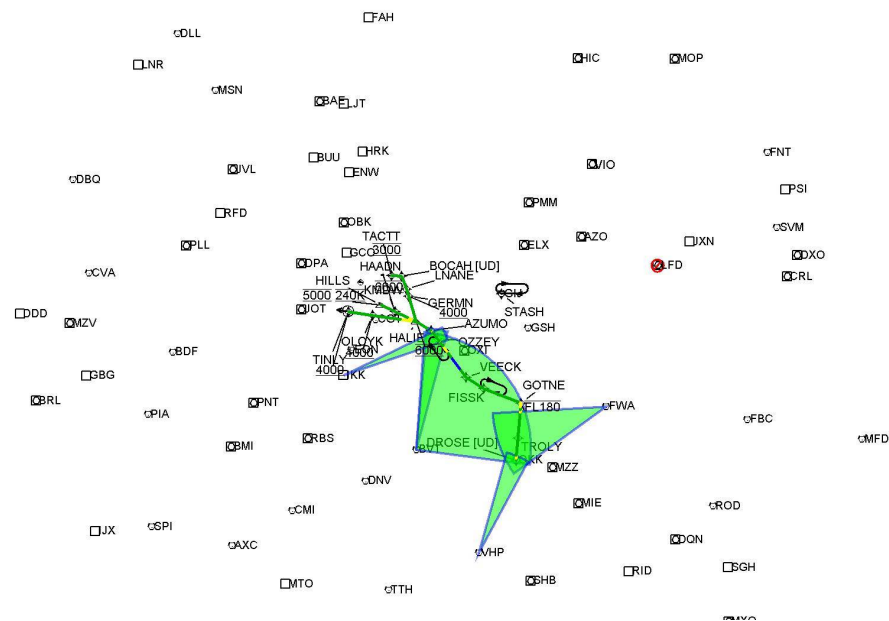
User DMEs

#	Name	Lat/Lon	MAGVAR	Range	Elevation [ft]	Frequency	Replaces	Status
1	IKK FAA 942623 - 001 IKK [IFPA]	N41° 04' 27.7626", W087° 51' 00.5883"	0.0 E	40	617.9	null	IKK FAA 942623 - 001	
ESV:		Bearing [True]: 60.0 to 67.0 Bearing [Mag]: 60.0 to 67.0				Arc Distance: Out to 50.0 NM Altitude: 2900.0 to 18700.0 ft		
2	BVT FAA 900606 - 021 BVT [IFPA]	N40° 33' 22.2178", W087° 04' 09.7481"	1.0 E	130	752.2	115.1	BVT FAA 900606 - 021	
ESV:		Bearing [True]: 1.0 to 11.0 Bearing [Mag]: 0.0 to 10.0				Arc Distance: Out to 55.0 NM Altitude: 2900.0 to 15300.0 ft		
3	VHP FAA 698209 - 066 VHP [IFPA]	N39° 48' 53.0246", W086° 22' 02.9992"	1.0 E	130	871.5	116.3	VHP FAA 698209 - 066	
ESV:		Bearing [True]: 12.0 to 25.0 Bearing [Mag]: 11.0 to 24.0				Arc Distance: Out to 47.0 NM Altitude: 3300.0 to 20000.0 ft		
4	FWA FAA 698241 - 036 FWA [IFPA]	N40° 58' 44.6315", W085° 11' 17.0092"	6.0 W	130	792.6	117.8	FWA FAA 698241 - 036	
ESV:		Bearing [True]: 231.0 to 263.0 Bearing [Mag]: 237.0 to 269.0				Arc Distance: Out to 52.0 NM Altitude: 3300.0 to 16000.0 ft		
5	BVT FAA 900606-18 BVT [IFPA]	N40° 33' 22.2178", W087° 04' 09.7481"	1.0 E	130	752.2	115.1	BVT FAA 900606-18	
ESV:		Bearing [True]: 360.0 to 93.0 Bearing [Mag]: 359.0 to 92.0				Arc Distance: Out to 53.0 NM Altitude: 3400.0 to 16000.0 ft		

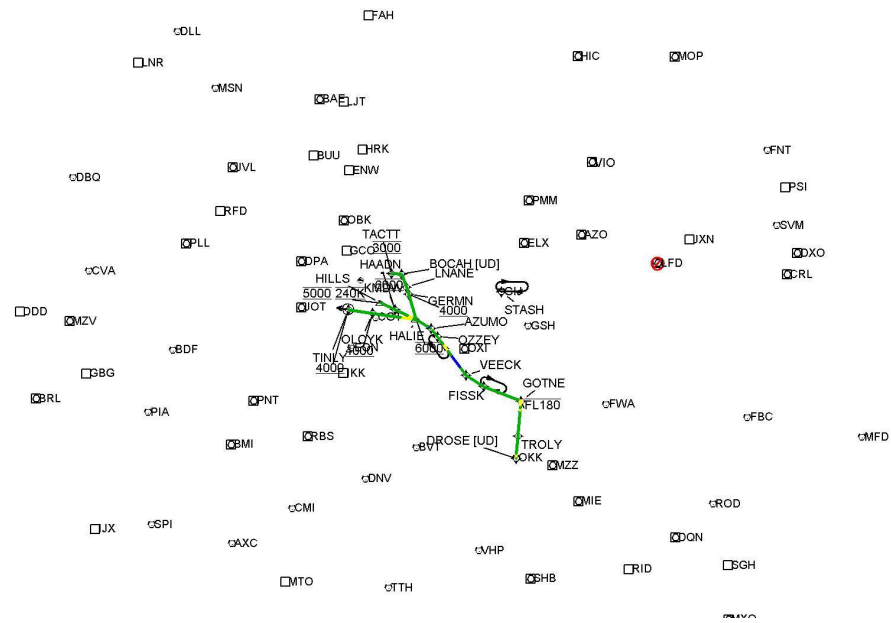


DME DME Assessment Results for FISSK5 path DROSE_TACTT

Graphic Depiction 1



Graphic Depiction 2



DME DME Assessment Results for FISSK5 path HALIE_HILLS

Results Summary

Flyability:	Completed
DME/DME:	Completed - No Critical DMEs
Name:	Jose G-CTR Medina
Project File:	C:\Users\Jose G-CTR Medina\Documents\01. Projects\DME EVALUATIONS\KMDW\FISSK FIVE\KMDW STAR FISSK FIVE DME 20220823 (email).tgs
Output File:	C:\Users\Jose G-CTR Medina\Documents\01. Projects\DME EVALUATIONS\KMDW\FISSK FIVE\KMDW [IFPA] FISSK5 20220823_1043 CDT\HALIE_HILLS\KMDW FISSK5 RNAV STAR HALIE HILLS 20220823_1043 CDT.pdf
Procedure Name:	FISSK5
Software: DmeDmePlugin:	6.5.1
Date/Time:	08/23/2022 10:43 CDT
Databases:	DTED level 0 max

Failures

No Failures

Warnings

No Warnings

Informational

No Informational

Notes For Flight Check

None

Flight Plan

Name	Type	Lat/Lon	Altitude (ft)	VNAV Mode	Ground Speed (kts)	Turn Type	Leg Type
HALIE	WP	N41° 30' 57.8500", W087° 09' 31.9500"	3400	VNAV	200	FLY_BY	TF
HAADN	WP	N41° 34' 53.0300", W087° 22' 52.4600"	3400	VNAV	240	FLY_BY	TF
HILLS	WP	N41° 37' 25.4000", W087° 31' 34.1800"	3400	VNAV	240	FLY_BY	TF

Flyability

Flight Type:	RNAV_STAR
Selected Airport:	KMDW [IFPA]
Climb Gradient:	None assigned
Speeds:	200 Ground Speed to 11000 FT
	240 Ground Speed to 18000 FT
	260 Ground Speed to 24000 FT
	340 Ground Speed above 24000 FT
Descent During a Turn:	Allowed
VNAV Mode:	Flight Plan

DME DME Assessment Results for FISSK5 path HALIE_HILLS

DME/DME	
RNP:	RNP 2
Flight Mode:	Manual
Line of Sight (DTED Level 0 Max):	Evaluated
Inertial Drift:	Enabled
Initial Drift:	0.558 NM
INS Drift Rate:	8.0 NM/Hour
Range Mode:	OSV
RNP Edges:	Evaluated
Min DME Range:	3.0 NM
DME Types:	DME, VOR-DME, VORTAC
DME Include Angles:	30 to 150
Critical DMEs:	Allowed
DoD Facilities:	Not included
Foreign Facilities:	Not included
High DMEs:	Included
Low DMEs:	Included
Terminal DMEs:	Included
Flight Check DMEs:	Not selected
Higher Altitudes:	Not Evaluated
Near Maximum Altitude:	Not Evaluated
Automatic ESVs:	Not enabled
Disabled DMEs:	LFD

DME/DME (Continued)										
DMEs Used										
#	Name	Lat/Lon	MAGVAR	Range	Type	Source	Critical	Status	Time	Distance
1	OBK	N42° 13' 16.9555", W087° 57' 06.0134"	2.0 W	130	DH	IFPA	NO	Enabled	87.5 %	88.4 %
2	JOT	N41° 32' 47.1067", W088° 19' 06.2780"	2.0 E	130	H	IFPA	NO	Enabled	12.5 %	13.9 %
3	IKK	N41° 04' 27.7626", W087° 51' 00.5883"	0.0 E	40	L	IFPA	NO	Enabled	12.5 %	11.6 %
4	CGT	N41° 30' 36.0237", W087° 34' 17.5660"	2.0 E	40	L	IFPA	NO	Enabled	87.5 %	88.4 %
5	EON	N41° 16' 10.6765", W087° 47' 27.7925"	2.0 E	40	L	IFPA	NO	Enabled	100 %	100 %
6	GCO	N41° 59' 38.7200", W087° 54' 08.3800"	0.0 E	40	L	IFPA	NO	Enabled	62.9 %	65.7 %
7	OXI	N41° 19' 19.4116", W086° 38' 57.4387"	0.0 E	130	H	IFPA	NO	Enabled	80.4 %	78.2 %
8	LFD	N42° 03' 44.9620", W084° 45' 54.4770"	5.0 W	40	L	IFPA	NO	Disabled		

Flight Check DME Selection						
Distance [NM]	Selected DMEs					Alternate
0.0	EON	OXI				
2.1	IKK	OBK	EON	OXI	CGT	
4.2	EON	OBK	OXI	CGT		
6.1	EON	OBK	GCO	CGT	OXI	
14.0	CGT	GCO	EON	OBK		
15.3	CGT	GCO	EON	OBK	JOT	

Inertial Drift Segments			
#	Start Location	End Location	Length [NM]

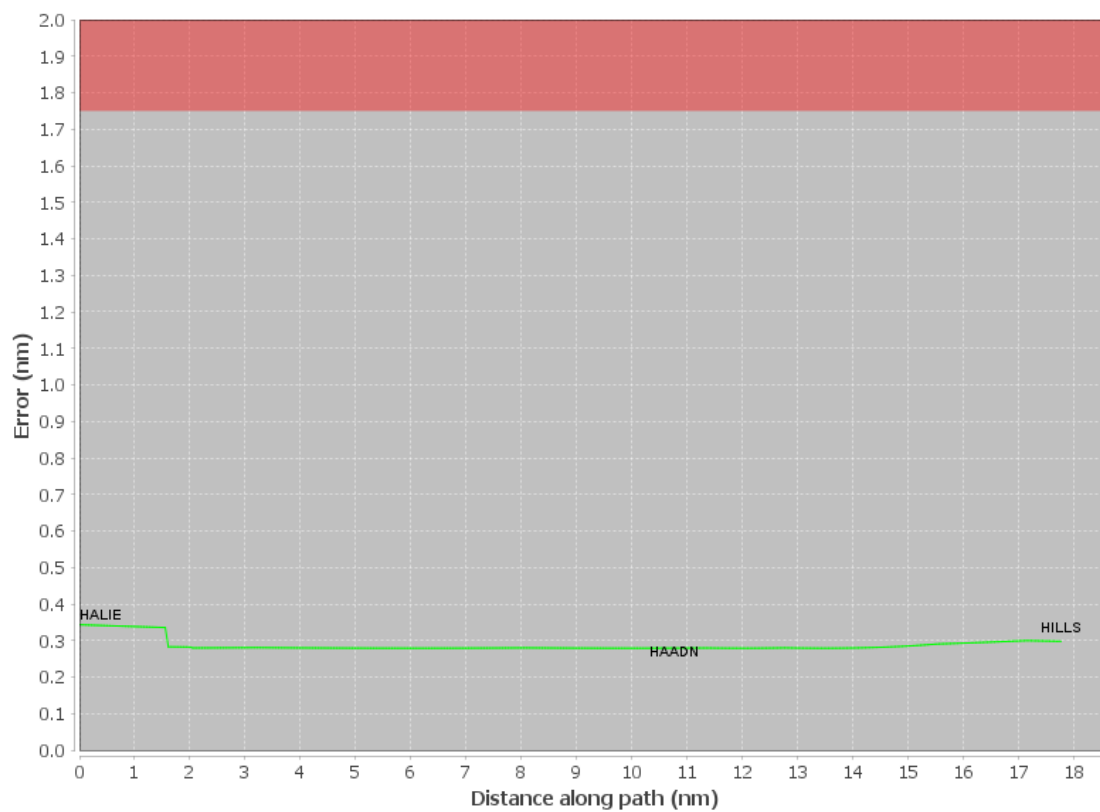
Available DMEs by Waypoints			
Waypoint Before	Waypoint After	DME List	Suggested DMEs
HALIE	HAADN	OXI, CGT, GCO, EON, IKK, OBK	
HAADN	HILLS	OXI, CGT, GCO, EON, OBK, JOT	

DME DME Assessment Results for FISSK5 path HALIE_HILLS

User Data Files								
#	File Name							
1	UserDMEsKMDW [IFPA] FISSK5 RNAV STAR_20220308_1451 CST.udt							
User DMEs								
#	Name	Lat/Lon	MAGVAR	Range	Elevation [ft]	Frequency	Replaces	Status
1	IKK FAA 942623 - 001 IKK [IFPA]	N41° 04' 27.7626", W087° 51' 00.5883"	0.0 E	40	617.9	null	IKK FAA 942623 - 001	
ESV:		Bearing [True]: 60.0 to 67.0 Bearing [Mag]: 60.0 to 67.0				Arc Distance: Out to 50.0 NM Altitude: 2900.0 to 18700.0 ft		
2	BVT FAA 900606 - 021 BVT [IFPA]	N40° 33' 22.2178", W087° 04' 09.7481"	1.0 E	130	752.2	115.1	BVT FAA 900606 - 021	
ESV:		Bearing [True]: 1.0 to 11.0 Bearing [Mag]: 0.0 to 10.0				Arc Distance: Out to 55.0 NM Altitude: 2900.0 to 15300.0 ft		
3	VHP FAA 698209 - 066 VHP [IFPA]	N39° 48' 53.0246", W086° 22' 02.9992"	1.0 E	130	871.5	116.3	VHP FAA 698209 - 066	
ESV:		Bearing [True]: 12.0 to 25.0 Bearing [Mag]: 11.0 to 24.0				Arc Distance: Out to 47.0 NM Altitude: 3300.0 to 20000.0 ft		
4	FWA FAA 698241 - 036 FWA [IFPA]	N40° 58' 44.6315", W085° 11' 17.0092"	6.0 W	130	792.6	117.8	FWA FAA 698241 - 036	
ESV:		Bearing [True]: 231.0 to 263.0 Bearing [Mag]: 237.0 to 269.0				Arc Distance: Out to 52.0 NM Altitude: 3300.0 to 16000.0 ft		
5	BVT FAA 900606-18 BVT [IFPA]	N40° 33' 22.2178", W087° 04' 09.7481"	1.0 E	130	752.2	115.1	BVT FAA 900606-18	
ESV:		Bearing [True]: 360.0 to 93.0 Bearing [Mag]: 359.0 to 92.0				Arc Distance: Out to 53.0 NM Altitude: 3400.0 to 16000.0 ft		

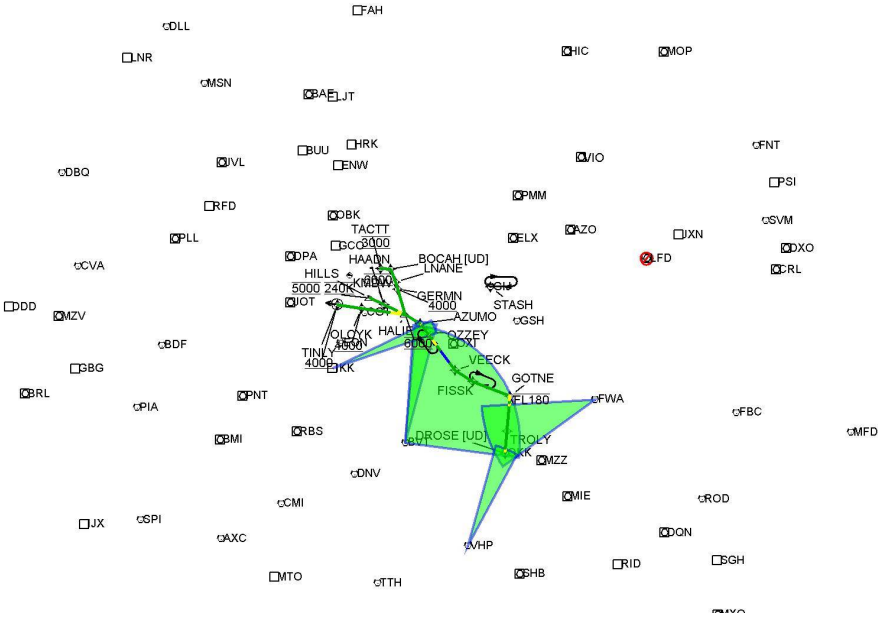
DME DME Assessment Results for FISSK5 path HALIE_HILLS

DME Error

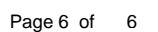


DME DME Assessment Results for FISSK5 path HALIE_HILLS

Graphic Depiction 1



Graphic Depiction 2



DME DME Assessment Results for FISSK5 path HALIE_TINLY

Results Summary

Flyability:	Completed
DME/DME:	Completed - No Critical DMEs
Name:	Jose G-CTR Medina
Project File:	C:\Users\Jose G-CTR Medina\Documents\01. Projects\DME EVALUATIONS\KMDW\FISSK FIVE\KMDW STAR FISSK FIVE DME 20220823 (email).tgs
Output File:	C:\Users\Jose G-CTR Medina\Documents\01. Projects\DME EVALUATIONS\KMDW\FISSK FIVE\KMDW [IFPA] FISSK5 20220823_1043 CDT\HALIE_TINLY\KMDW FISSK5 RNAV STAR HALIE TINLY 20220823_1043 CDT.pdf
Procedure Name:	FISSK5
Software: DmeDmePlugin:	6.5.1
Date/Time:	08/23/2022 10:43 CDT
Databases:	DTED level 0 max

Failures

No Failures

Warnings

No Warnings

Informational

No Informational

Notes For Flight Check

None

Flight Plan

Name	Type	Lat/Lon	Altitude (ft)	VNAV Mode	Ground Speed (kts)	Turn Type	Leg Type
HALIE	WP	N41° 30' 57.8500", W087° 09' 31.9500"	3400	VNAV	200	FLY_BY	TF
OLCYK	WP	N41° 32' 24.6900", W087° 36' 16.0600"	3400	VNAV	200	FLY_BY	TF
TINLY	WP	N41° 33' 19.0800", W087° 50' 57.5600"	3400	VNAV	200	FLY_OVER	TF

Flyability

Flight Type:	RNAV_STAR
Selected Airport:	KMDW [IFPA]
Climb Gradient:	None assigned
Speeds:	200 Ground Speed to 11000 FT
	240 Ground Speed to 18000 FT
	260 Ground Speed to 24000 FT
	340 Ground Speed above 24000 FT
Descent During a Turn:	Allowed
VNAV Mode:	Flight Plan

DME DME Assessment Results for FISSK5 path HALIE_TINLY

DME/DME	
RNP:	RNP 2
Flight Mode:	Manual
Line of Sight (DTED Level 0 Max):	Evaluated
Inertial Drift:	Enabled
Initial Drift:	0.558 NM
INS Drift Rate:	8.0 NM/Hour
Range Mode:	OSV
RNP Edges:	Evaluated
Min DME Range:	3.0 NM
DME Types:	DME, VOR-DME, VORTAC
DME Include Angles:	30 to 150
Critical DMEs:	Allowed
DoD Facilities:	Not included
Foreign Facilities:	Not included
High DMEs:	Included
Low DMEs:	Included
Terminal DMEs:	Included
Flight Check DMEs:	Not selected
Higher Altitudes:	Not Evaluated
Near Maximum Altitude:	Not Evaluated
Automatic ESVs:	Not enabled
Disabled DMEs:	LFD

DME/DME (Continued)										
DMEs Used										
#	Name	Lat/Lon	MAGVAR	Range	Type	Source	Critical	Status	Time	Distance
1	OBK	N42° 13' 16.9555", W087° 57' 06.0134"	2.0 W	130	DH	IFPA	NO	Enabled	93.1 %	93.1 %
2	JOT	N41° 32' 47.1067", W088° 19' 06.2780"	2.0 E	130	H	IFPA	NO	Enabled	59.6 %	59.6 %
3	IKK	N41° 04' 27.7626", W087° 51' 00.5883"	0.0 E	40	L	IFPA	NO	Enabled	93.4 %	93.4 %
4	CGT	N41° 30' 36.0237", W087° 34' 17.5660"	2.0 E	40	L	IFPA	NO	Enabled	73.7 %	73.7 %
5	DPA	N41° 53' 25.3373", W088° 21' 00.6389"	2.0 E	40	L	IFPA	NO	Enabled	29.8 %	29.8 %
6	EON	N41° 16' 10.6765", W087° 47' 27.7925"	2.0 E	40	L	IFPA	NO	Enabled	100 %	100 %
7	GCO	N41° 59' 38.7200", W087° 54' 08.3800"	0.0 E	40	L	IFPA	NO	Enabled	76.2 %	76.2 %
8	OXI	N41° 19' 19.4116", W086° 38' 57.4387"	0.0 E	130	H	IFPA	NO	Enabled	44.3 %	44.3 %
9	LFD	N42° 03' 44.9620", W084° 45' 54.4770"	5.0 W	40	L	IFPA	NO	Disabled		

Flight Check DME Selection						
Distance [NM]	Selected DMEs					Alternate
0.0	EON	OXI				
2.1	IKK	OBK	EON	OXI	CGT	
6.2	IKK	OXI	EON	CGT		
6.2	EON	OBK	IKK	GCO	OXI	CGT
7.0	EON	OBK	IKK	OXI	CGT	
13.9	CGT	OBK	EON	GCO	IKK	JOT
14.8	EON	GCO	OBK	IKK	JOT	

Inertial Drift Segments			
#	Start Location	End Location	Length [NM]

DME DME Assessment Results for FISSK5 path HALIE_TINLY

Available DMEs by Waypoints

Waypoint Before	Waypoint After	DME List	Suggested DMEs
HALIE	OLCYK	OXI, CGT, GCO, EON, IKK, OBK, JOT	
OLCYK	TINLY	CGT, GCO, DPA, EON, IKK, OBK, JOT	

User Data Files

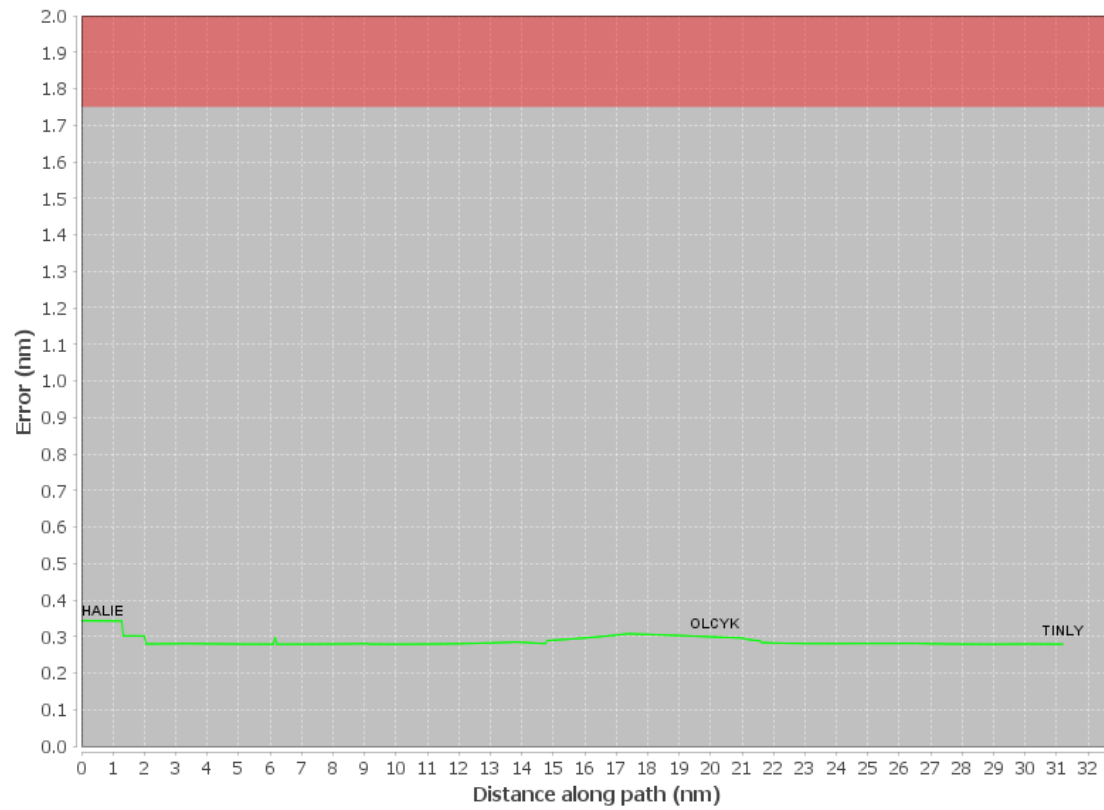
#	File Name
1	UserDMEsKMDW [IFPA] FISSK5 RNAV STAR_20220308_1451 CST.udt

User DMEs

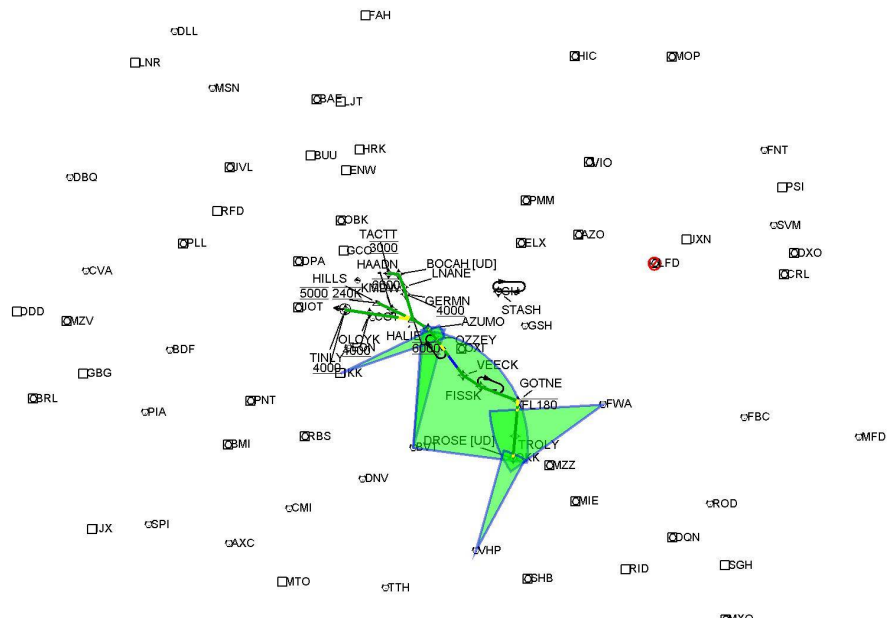
#	Name	Lat/Lon	MAGVAR	Range	Elevation [ft]	Frequency	Replaces	Status
1	IKK FAA 942623 - 001 IKK [IFPA]	N41° 04' 27.7626", W087° 51' 00.5883"	0.0 E	40	617.9	null	IKK FAA 942623 - 001	
ESV:		Bearing [True]: 60.0 to 67.0 Bearing [Mag]: 60.0 to 67.0				Arc Distance: Out to 50.0 NM Altitude: 2900.0 to 18700.0 ft		
2	BVT FAA 900606 - 021 BVT [IFPA]	N40° 33' 22.2178", W087° 04' 09.7481"	1.0 E	130	752.2	115.1	BVT FAA 900606 - 021	
ESV:		Bearing [True]: 1.0 to 11.0 Bearing [Mag]: 0.0 to 10.0				Arc Distance: Out to 55.0 NM Altitude: 2900.0 to 15300.0 ft		
3	VHP FAA 698209 - 066 VHP [IFPA]	N39° 48' 53.0246", W086° 22' 02.9992"	1.0 E	130	871.5	116.3	VHP FAA 698209 - 066	
ESV:		Bearing [True]: 12.0 to 25.0 Bearing [Mag]: 11.0 to 24.0				Arc Distance: Out to 47.0 NM Altitude: 3300.0 to 20000.0 ft		
4	FWA FAA 698241 - 036 FWA [IFPA]	N40° 58' 44.6315", W085° 11' 17.0092"	6.0 W	130	792.6	117.8	FWA FAA 698241 - 036	
ESV:		Bearing [True]: 231.0 to 263.0 Bearing [Mag]: 237.0 to 269.0				Arc Distance: Out to 52.0 NM Altitude: 3300.0 to 16000.0 ft		
5	BVT FAA 900606-18 BVT [IFPA]	N40° 33' 22.2178", W087° 04' 09.7481"	1.0 E	130	752.2	115.1	BVT FAA 900606-18	
ESV:		Bearing [True]: 360.0 to 93.0 Bearing [Mag]: 359.0 to 92.0				Arc Distance: Out to 53.0 NM Altitude: 3400.0 to 16000.0 ft		

DME DME Assessment Results for FISSK5 path HALIE_TINLY

DME Error



Graphic Depiction 1



DME DME Assessment Results for FISSK5 path HALIE_TINLY

Graphic Depiction 2

