

Flight Procedures Cover Page	Task Action: FLIGHT CHECK	Task Type: IAP	Estimated Chart Date: 01/27/2022	APWS Task ID: 9F72F25A46A04E39B0CCCE646A28A44B	APWS Project ID: DE605EE831894DED8153222457C13273
Procedure: RNAV (GPS) RWY 27 AMDT 2		Enroute: NO	Specialist: Lindholm, Scott		Agreement Number:
Airport ID: KPCW			Airport City: PORT CLINTON		State: OH
Facility ID:	Facility Type:	Flight Inspection Remark Type: New FC Slot			
<p><b>Procedure Comments:</b>  FULL AMENDMENT TO REVISE MISSED APPROACH AND RAISE LNAV/VNAV MINIMA.</p> <p>CRC REMAINDER CHANGE</p> <p>AMENDMENT COMPLETED USING ACTIVE AIRPORT DATA.</p> <p>CONTACT DON LANIER (AJV-A431) 405-954-8242</p>					



10/28/21 J. DuBois





WAAS CH <b>58012</b> <b>W27A</b>	APP CRS <b>270°</b>	Rwy Idg <b>5445</b> TDZE <b>588</b> Apt Elev <b>590</b>
--	------------------------	---

OLD

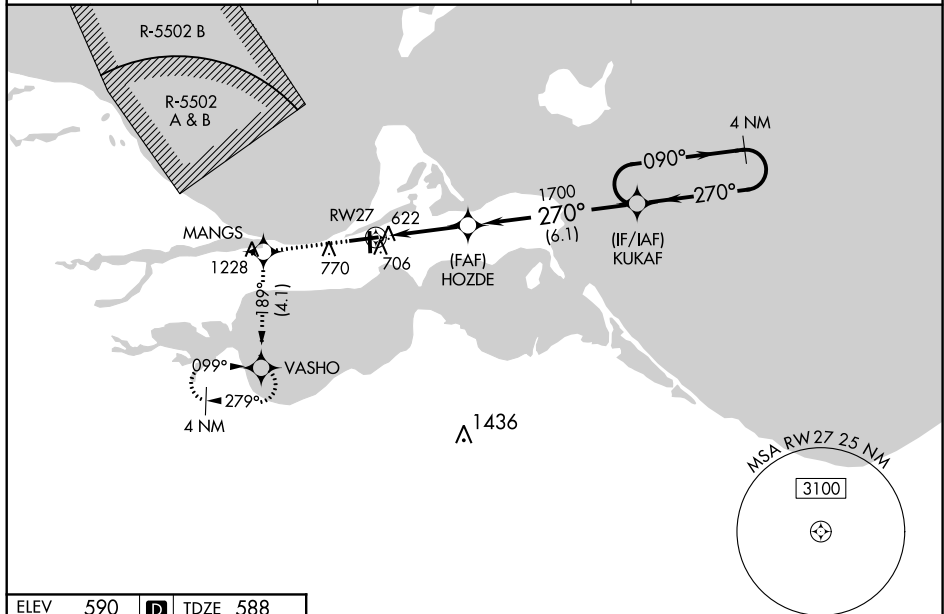
RNAV (GPS) RWY 27  
ERIE-OTTAWA INTL (PCW)

RNP APCH.

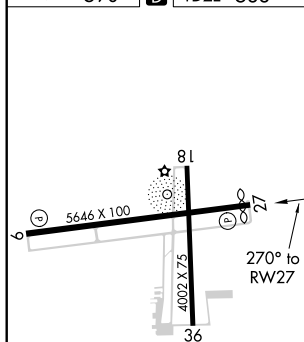
**T** Baro-VNAV NA when using Toledo Executive altimeter setting. For uncompensated Baro-VNAV systems, LNAV/VNAV NA below -16°C (4°F) or above 54°C (130°F). **A** Rwy 27 helicopter visibility reduction below ¼ SM NA. When local altimeter setting not received, use Toledo Executive altimeter setting and increase all DA/MDA 80 feet and all visibilities ¼ mile. Circling Rwy 18, 36 NA at night.

**MISSED APPROACH:**  
Climb to 3000 direct  
MANGS and on track  
189° to VASHO  
and hold, continue  
climb-in-hold to 3000.

AWOS-3 <b>118.775</b>	CLEVELAND APP CON <b>126.35 346.325</b>	UNICOM <b>122.8 (CTAF) 0</b>
--------------------------	--	---------------------------------



ELEV	590		TDZE	588
------	-----	---	------	-----



HIRL Rwy 9-27 **L**  
MIRL Rwy 18-36 **L**  
REIL Rwy 9 and 27 **L**

3000  
↑

MANGS  
✱

tr 189°

VASHO  
✱

VGS1 and RNAV glidepath not coincident  
(VGS1 Angle 3.00/TCH 40).

4 NM  
Holding Pattern

KUKAF

HOZDE  
1700

270°

090° → 2500  
← 270°

RW27

1700

GP 3.00°  
TCH 40

3.4 NM

6.1 NM

CATEGORY	A	B	C	D
LPV DA	910-1½ 322 (400-1½)			
RNAV/ VNAV DA	956-1¼ 368 (400-1¼)			
RNAV MDA	980-1 392 (400-1)		980-1½ 392 (400-1½)	
<b>C</b> CIRCLING	1140-1 550 (600-1)		1180-1½ 590 (600-1½)	1580-3 990 (1000-3)

PORT CLINTON, OHIO

AL-5727 (FAA)

FIG

WAAS CH <b>58012</b> <b>W27A</b>	APP CRS <b>270°</b>	Rwy Idg TDZE <b>588</b> Apt Elev <b>590</b>
--	------------------------	---

# RNAV (GPS) RWY 27

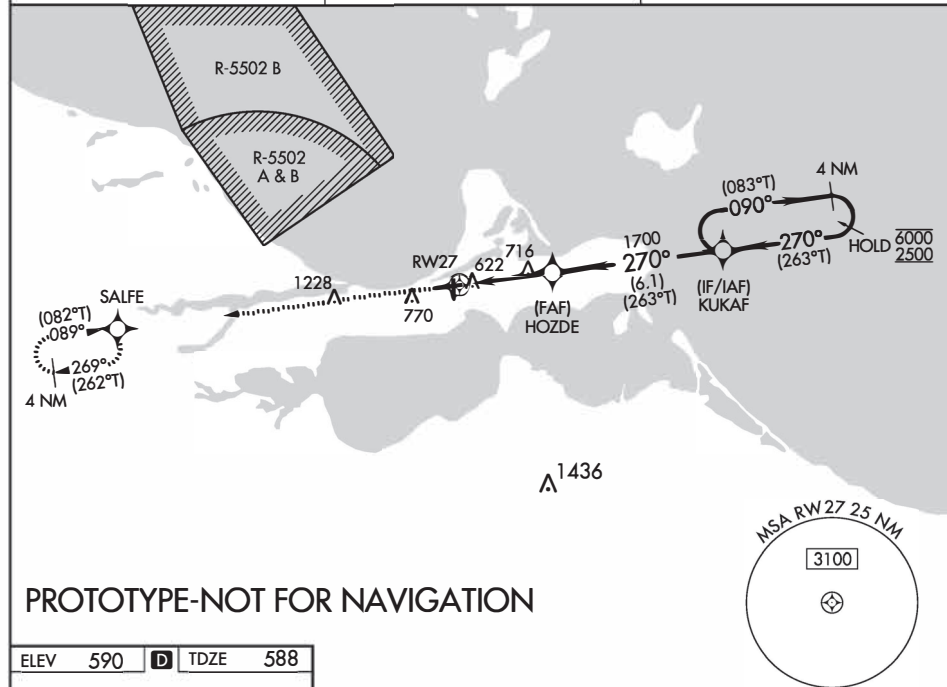
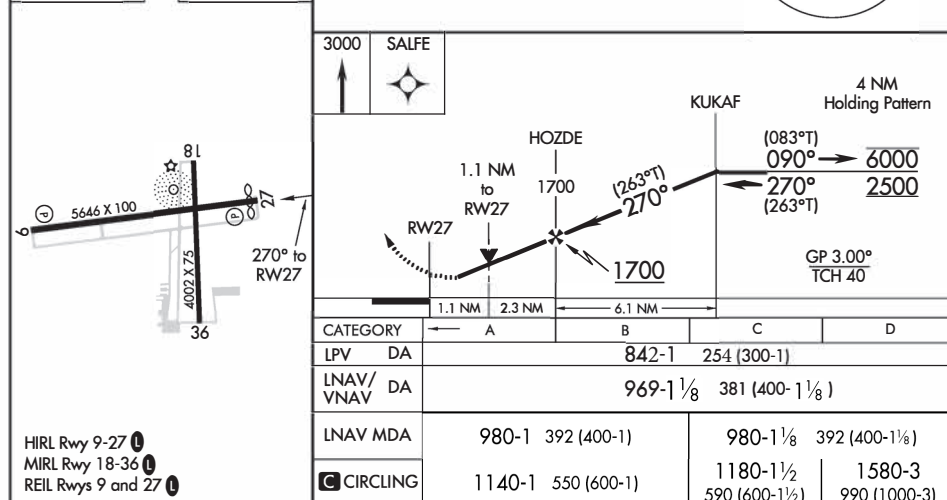
ERIE-OTTAWA INTL (PCW)

RNP APCH - GPS.

**⚠** Circling Rwy 18, 36 NA at night. Rwy 27 helicopter visibility reduction below 1 SM NA.  
**⚠** For uncompensated Baro-VNAV systems, LNAV/VNAV NA below -16°C or above 54°C.

**MISSED APPROACH:**  
 Climb to 3000 direct  
 SALFE and hold.

AWOS-3 <b>118.775</b>	CLEVELAND APP CON <b>126.35 346.325</b>	UNICOM <b>122.8 (CTAF) 0</b>
--------------------------	--	---------------------------------

ELEV 590 **D** TDZE 588

PORT CLINTON, OHIO

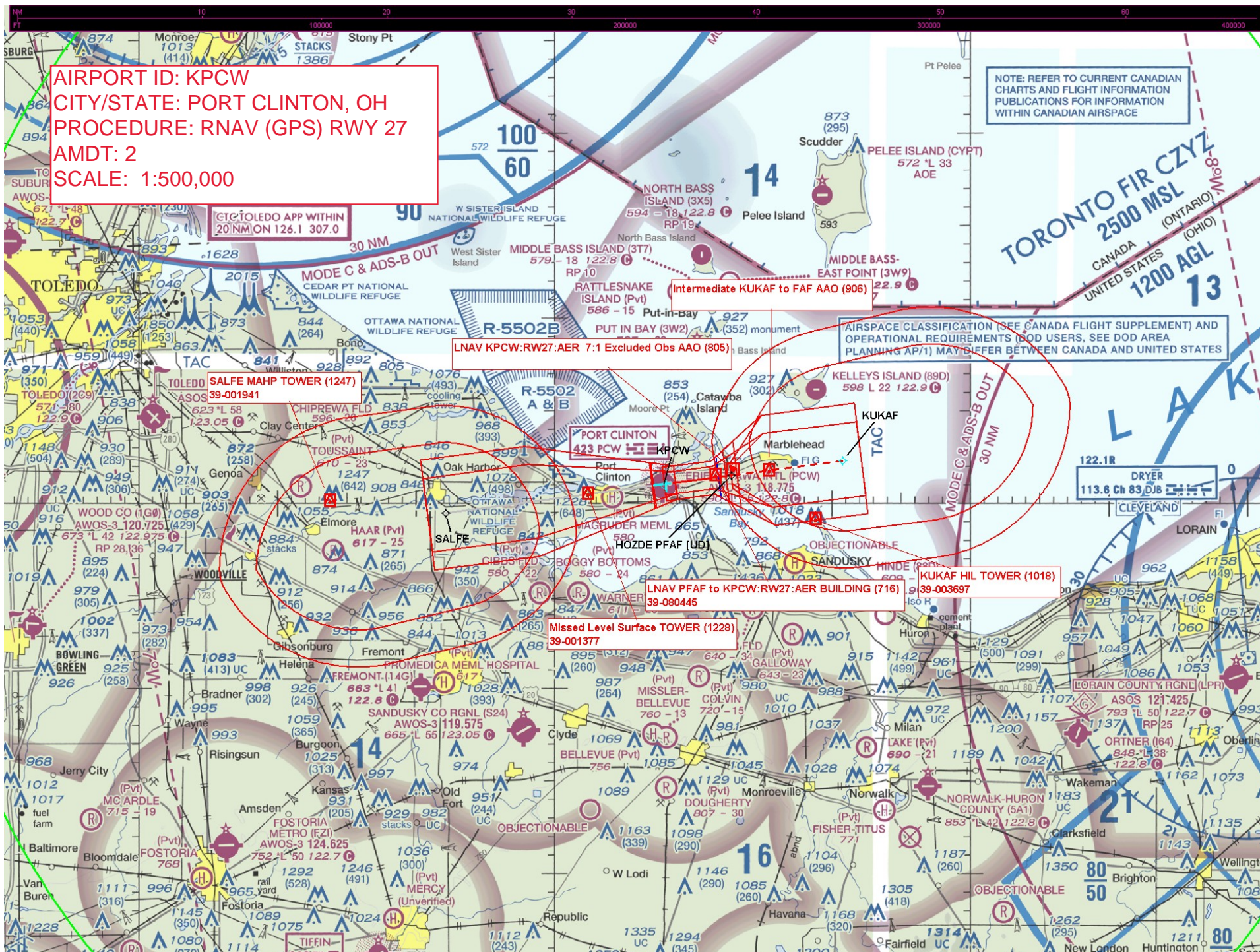
Amdt 2 FIG

41°31'N-82°52'W

# RNAV (GPS) RWY 27

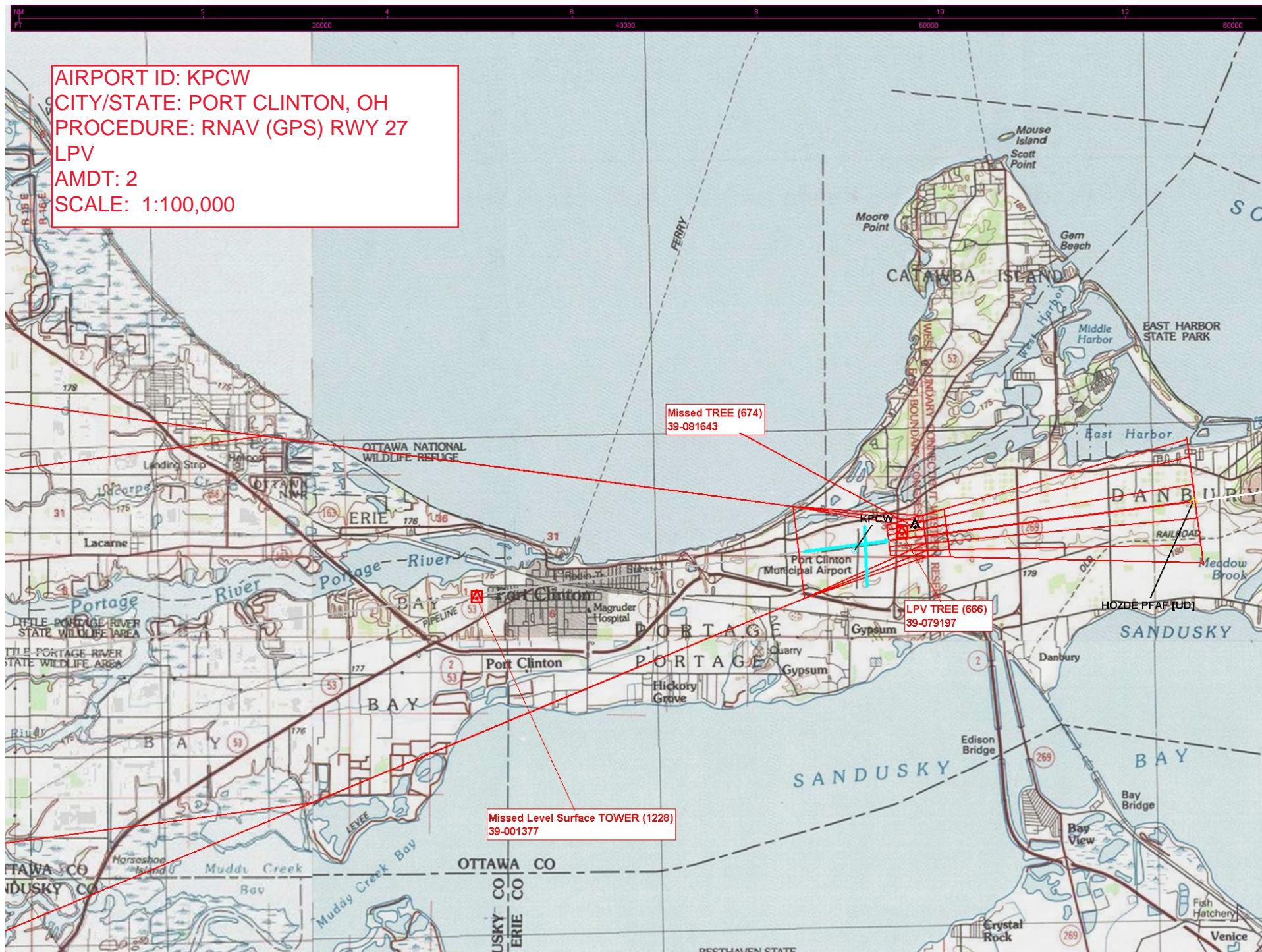
ERIE-OTTAWA INTL (PCW)







AIRPORT ID: KPCW  
CITY/STATE: PORT CLINTON, OH  
PROCEDURE: RNAV (GPS) RWY 27  
LPV  
AMDT: 2  
SCALE: 1:100,000





AIRPORT ID: KPCW  
CITY/STATE: PORT CLINTON, OH  
PROCEDURE: RNAV (GPS) RWY 27  
LNAV/VNAV  
AMDT: 2  
SCALE: 1:100,000

Missed Level Surface TOWER (1228)  
39-001377

LNAV/VNAV TREE (694)  
39-080145



AIRPORT ID: KPCW  
CITY/STATE: PORT  
CLINTON, OH  
PROCEDURE:  
RNAV (GPS) RWY 27  
LNAV AND CIRCLING  
AMDT: 2  
SCALE: 1:100,000

