

Flight Procedures Cover Page	Task Action: FLIGHT CHECK	Task Type: IAP	Estimated Chart Date: 10/31/2024	APWS Task ID: 9F695DA9ACCF476DBF376F9A3DB03AF9	APWS Project ID: 622299F305164F23B4DB19D9605261C1
Procedure: RNAV (GPS) RWY 19 ORIG		Enroute: NO	Specialist: Weston, Daniel		Agreement Number:
Airport ID: 7S6			Airport City: WHITE SULPHUR SPRINGS		State: MT
Facility ID:	Facility Type:	Flight Inspection Remark Type: New FC Slot			
<div>Procedure Comments: ORIGINAL PROCEDURE.</div> <div>VFR TO IFR AIRPORT.</div> <div>PENDING AIRNAV DATA USED.</div> <div>ASSIGNED MAG VAR, K7S6: OLD 16E-NEW 11E.</div> <div>CONTACT RAKE MCGRAW 405-954-8711.</div> <div>QUALITY 9 CHECKED BEGUE</div> <div>QUALITY 39 CHECKED</div>					

WHITE SULPHUR SPRINGS, MONTANA

AL-11832 (FAA)

FIG

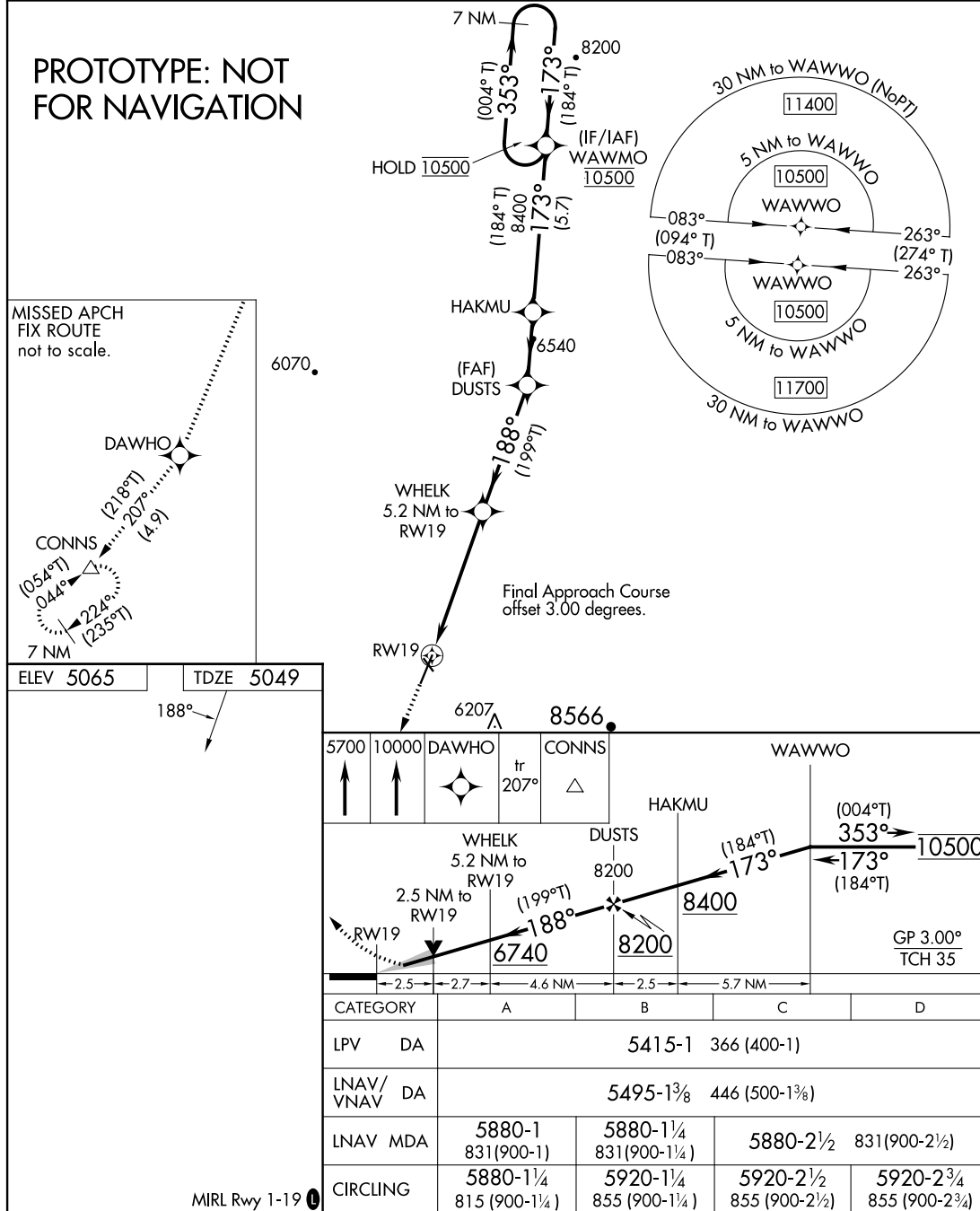
WAAS CH <b>65648</b> <b>W19A</b>	APP CRS <b>188°</b>	Rwy Idg TDZE <b>5049</b> Apt Elev <b>5065</b>
--	------------------------	---

## RNAV (GPS) RWY 19

WHITE SULPHUR SPRINGS (7S6)

RNP APCH - GPS. For uncompensated Baro-VNAV systems, LNAV/VNAV NA below -25°C or above 54°C. Rwy 19 helicopter visibility reduction below ¾ SM NA. Circling NA to Rwys 13 and 31. Circling NA for Cat C and D east of Rwy 1-19.	MISSED APPROACH: Climb to 5700 then climb to 10000 direct DAWHO and on track 207° to CONNS and hold, continue climb-in-hold to 10000.
--	---

AWOS-3PT <b>118.525</b>	SALT LAKE CENTER <b>XXX.XX XXX.XX</b>	CTAF <b>122.90</b>
----------------------------	--	-----------------------



AUTOMATED AL-11832 RNAV (GPS) RWY 1

NW-1  
1 AUG 2024  
COMPILER: CG  
REVIEWER:  
DBL CHKR:  
EFF: FIG

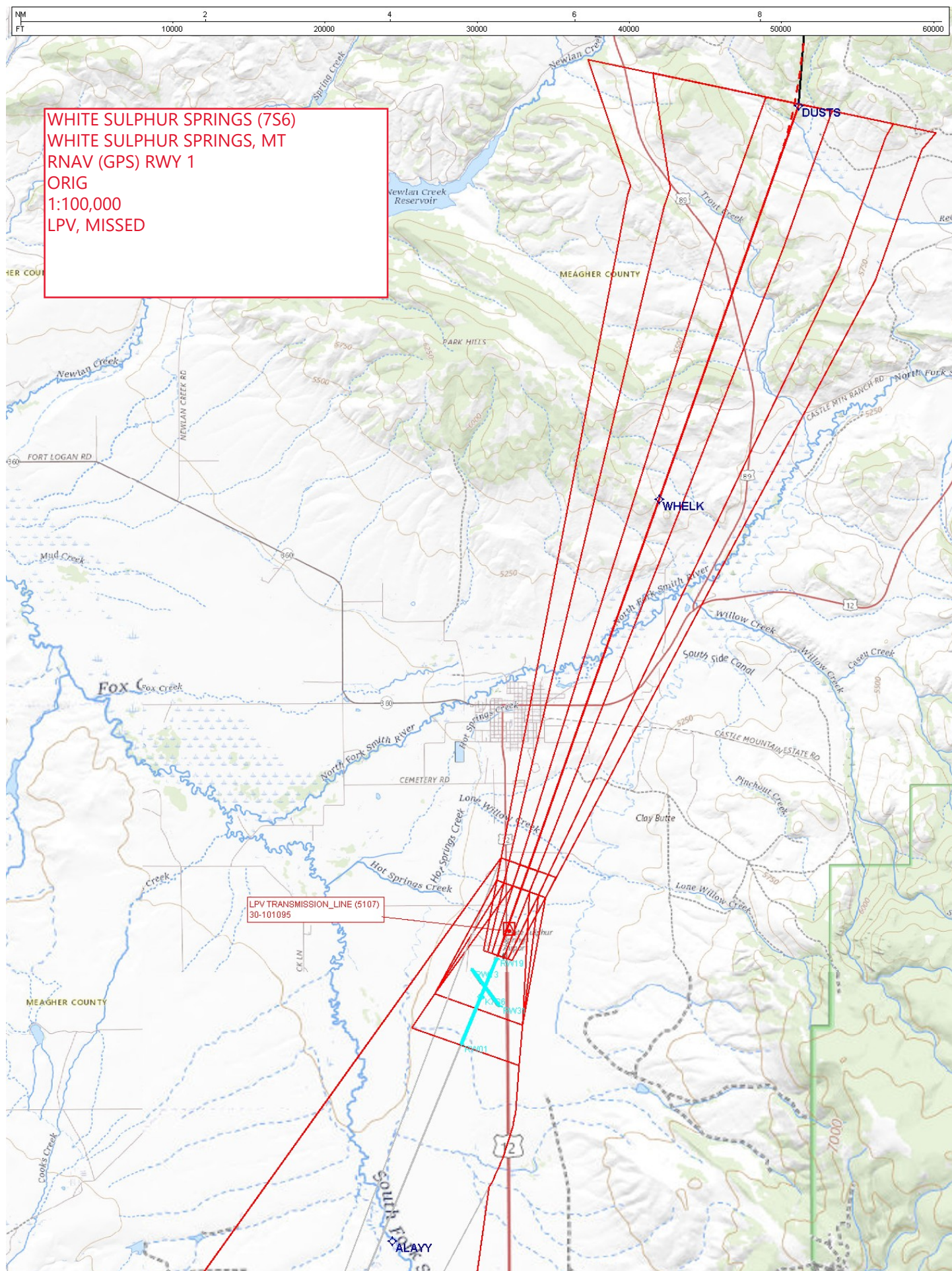
WHITE SULPHUR SPRINGS, MONTANA

Orig FIG

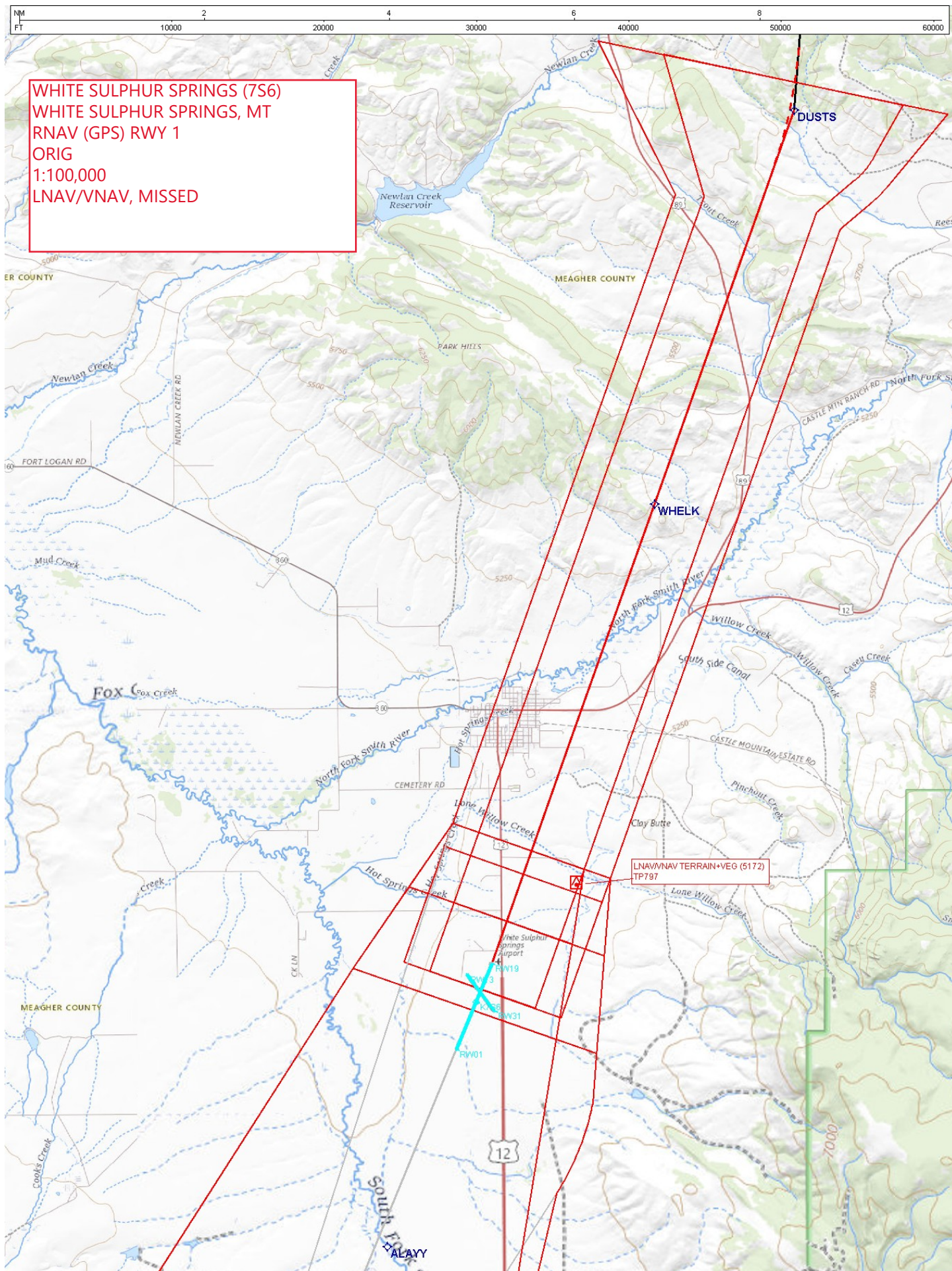
46°30'N-110°55'W

WHITE SULPHUR SPRINGS (7S6)

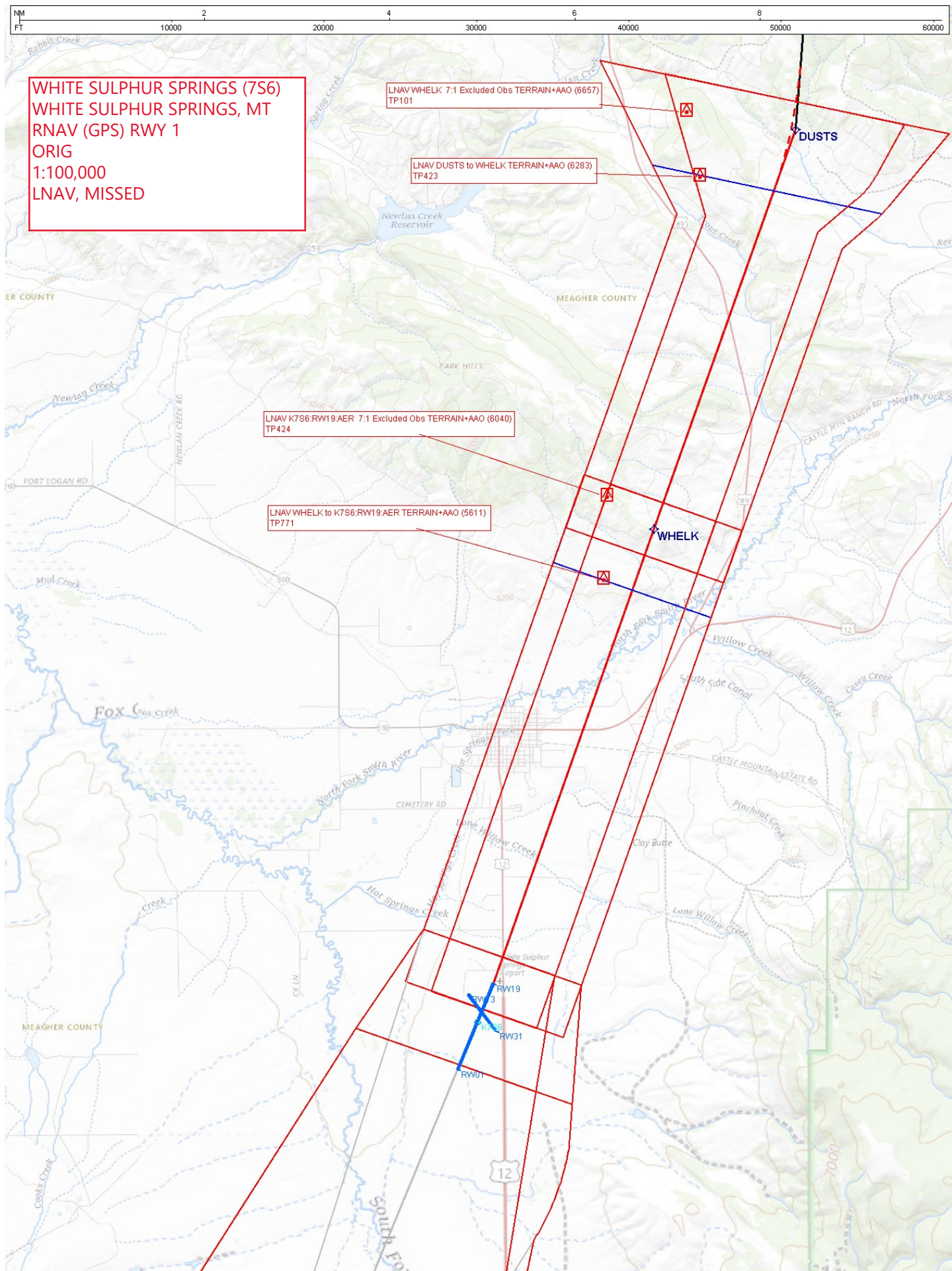
RNAV (GPS) RWY 19



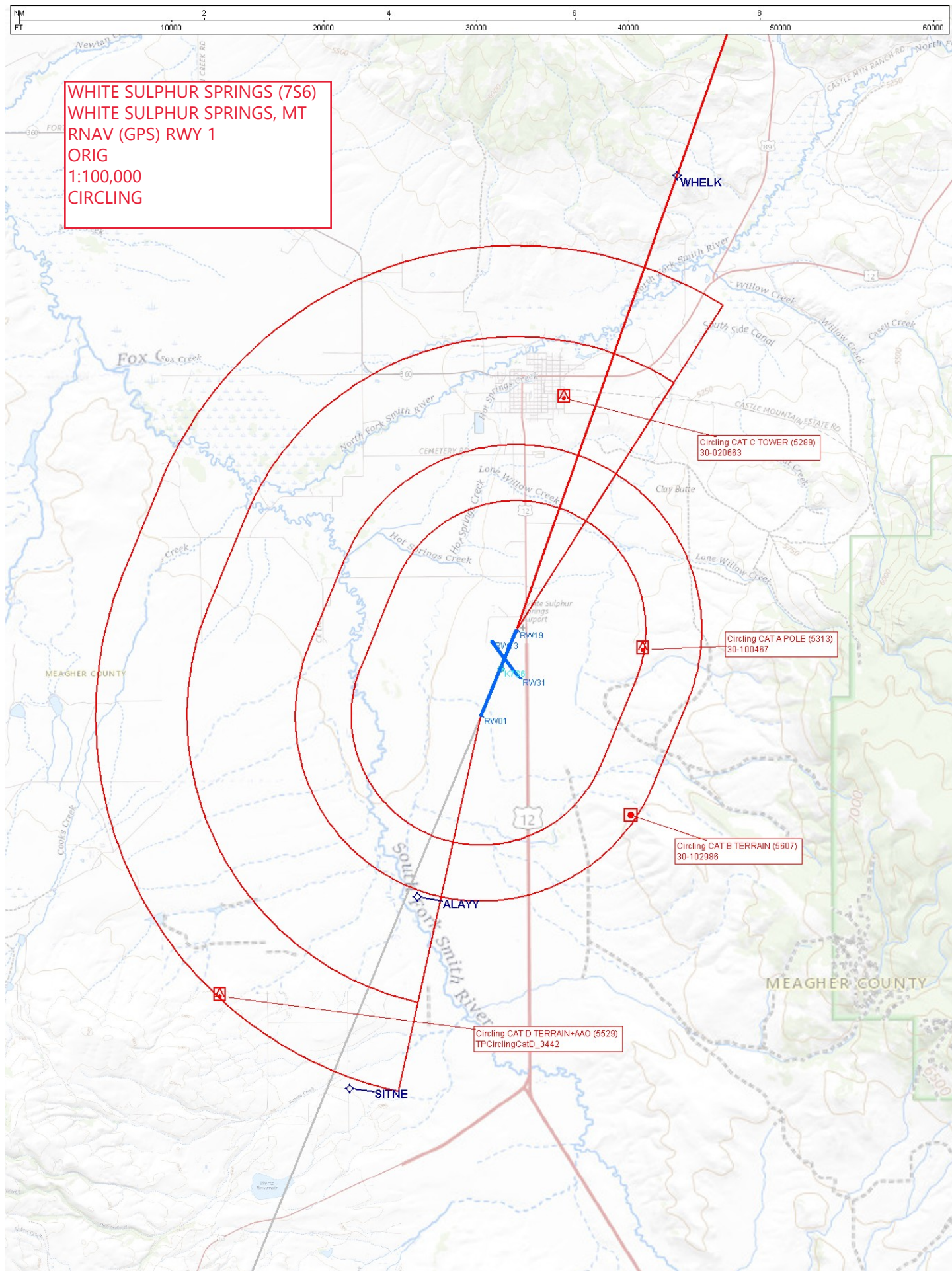




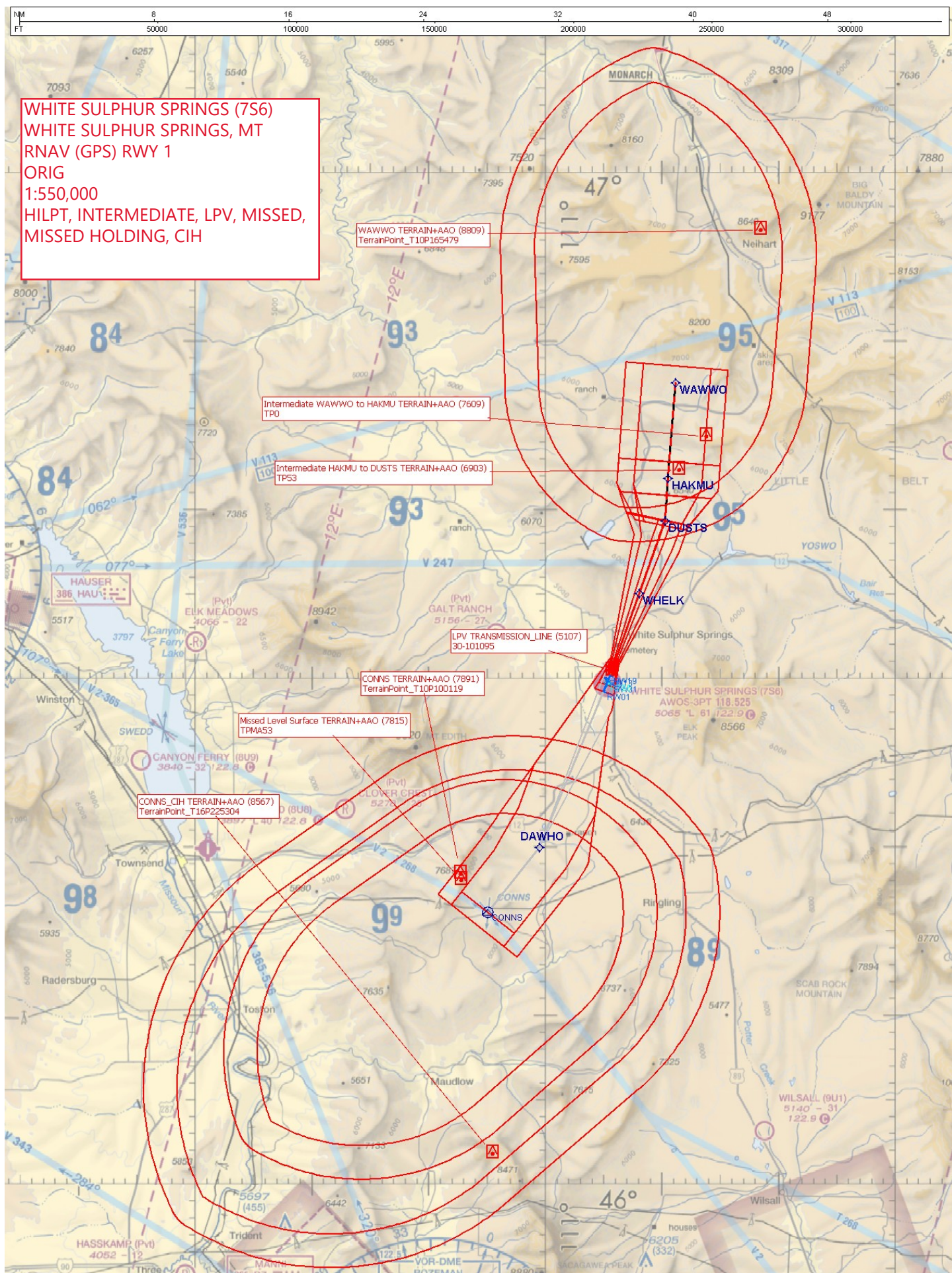








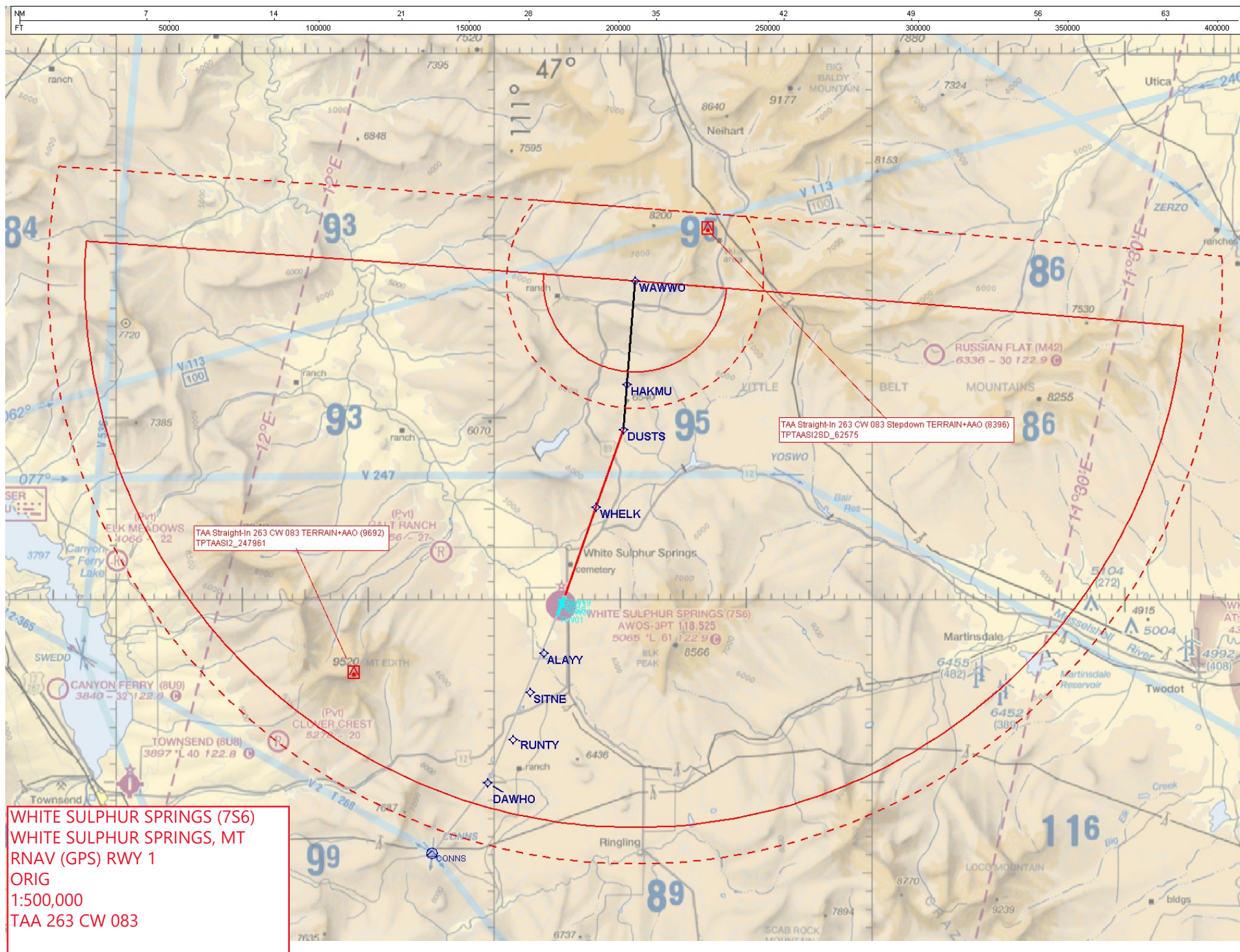
















# Federal Aviation Administration

## Initial Development Notification for AIRNAV Pending Records

To: Scott Jerden, Manager Aeronautical Data Team, AJV-A31

From: Bev Bordy, Manager Instrument Flight Procedures Projects Team, AJV-A4

Subject: **ACTION:** Request for Pending Records **K7S6\_\_WHITE SULPHUR SPRINGS, , MT US**

The Magnetic Variation (MV) data for the airport(s) and/or facility(s) listed will be revised effective concurrent with the publication of the procedure(s) listed below. Estimated Chart Date: 7/11/2024

Current/Assigned MV E 16 1985 New MV E 11 2025

ECD	Airport ID	Procedure Name	AMDT #	Task Report Type Selections
7/11/2024	K7S6	RNAV (GPS) RWY 1 ORIG		MAGVAR
7/11/2024	K7S6	RNAV (GPS) RWY 19 ORG		MAGVAR

NO RUNWAY NUMBER CHANGES

IF you have any questions please notify: john.bordy@faa.gov

Processed Tuesday, January 23, 2024