


Flight Procedure Tracking Form		Action: AMENDMENT	Task Type: IAP	Date Open: 11/04/2019	Task #: 2019110434567701002	Request #: 20191104345677
Procedure: RNAV (GPS) RWY 19 AMDT 0B			Airport ID: KIMT	Airport: FORD		Reimbursable #: NO
City: IRON MOUNTAIN KINGSFORD	ST: MI	GPS #:	Estimated Chart Date: 04/23/2020		FICO #:	
Fac ID: N/A		Fac. Type:			Specialist: DALE SICKELS	
Procedure Review						
	Rec'd	Rel'd	Full Name	Comments		
Lead:	11/06/2019					
QA:						
Liaison:						
Procedure Comments:			ENROUTE-NON	Remark Type: INFORMATION		
<p>PROCESSED IAW AIRCRAFT OPERATIONS GROUP (AJW-33) MEMO, OCTOBER 3, 2018, SUBJECT: FLIGHT INSPECTION REVIEW NOT REQUIRED.</p> <p>P-NOTAM.</p> <p>CIRCLING ICON.</p> <p>ACTIVE DATA USED.</p> <p>CONTACT DAVID DANNER, AJV-A421, 405-954-5077.</p>						



APP CRS
190°

Rwy Idg
TDZE
1182

Apt Elev
1182

OLD

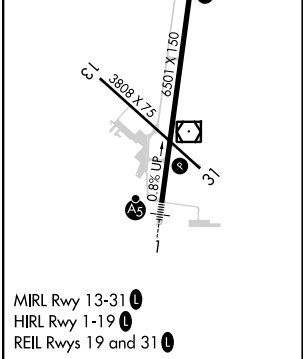
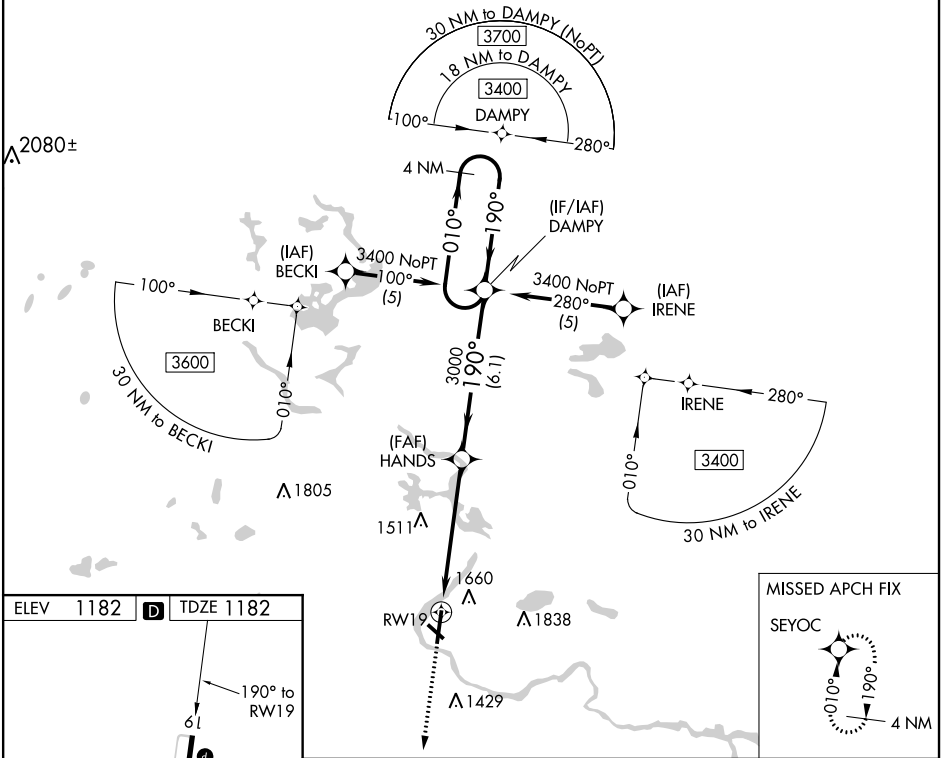
RNAV (GPS) RWY 19
FORD (IMT)

⚠

Circling NA northeast of Rwy 19 and 31. DME/DME RNP-0.3 NA.
Helicopter visibility reduction below 1 SM NA. When local altimeter setting not received, use Escanaba altimeter setting and increase all MDA 180 feet, increase LNAV and Circling Cat B visibility ¼ mile, Cats C and D visibility ¾ mile.
Rwy 19 Straight-in and Circling and Circling to Rwy 31 NA at night.

MISSED APPROACH:
Climb to 3400 direct
SEYOC and hold.

ASOS 119.025	MINNEAPOLIS CENTER 121.25 322.5	UNICOM 122.8 (CTAF) 0
-----------------	------------------------------------	--------------------------



3400 ↑	SEYOC ✦	<div><div>DAMPY</div><div>4 NM Holding Pattern</div></div>			
<div><div>RW19</div><div>5.5 NM</div></div>		<div><div>HANDS</div><div>✦</div><div>3000</div><div>3.05°</div><div>TCH 42</div></div>	<div><div>190°</div><div>010°</div><div>190°</div><div>3400</div></div>		
CATEGORY		A	B	C	D
LNAV MDA	1760-1	578 (600-1)	1760-1½ 578 (600-1½)	1760-1¾ 578 (600-1¾)	
CIRCLING	1760-1	578 (600-1)	1780-1½ 598 (600-1½)	1780-2 598 (600-2)	

NM 1 2 3 4 5 6 7 8 9 10
FT 8000 16000 24000 32000 40000 48000 56000 64000

fpotlk | imt_il1 (PROD) | 9 Sep 2015 09:45:28 | 1" = 8333.3 feet (MAP)

Map from KIMT ILS or LOC/DME RWY 1 showing new circling areas and controlling obstacles.

