

Flight Procedures Cover Page	Task Action: Amendment	Task Type: Graphical DP	Estimated Chart Date: 07/16/2020	APWS Task ID: 9CE2E96371FF40EC9EB715DCE0FFC1DF	APWS Request ID: 47056700399B43A9A7CAFC01CDB7CA63
Procedure: TAKE-OFF MINS AND ODP - KPAH		Enroute: NO	Specialist: Carlson, Kelly		Agreement Number:
Airport ID: KPAH	Airport Name: BARKLEY RGNL		Airport City: PADUCAH		State: KY
Facility ID:	Facility Type:	Flight Inspection Remark Type:			
<p><b>Procedure Comments:</b>  AMENDMENT COMPLETED UTILIZING PENDING DATA (7/16/2020).   PROCESSED IAW AIRCRAFT OPERATIONS GROUP (AJW-33) MEMO, OCT 3, 2018: SUBJECT: FLIGHT INSPECTION REVIEW NOT REQUIRED.   CONTACT WARDELL HENNING 405-954-9954</p>					

*Digitally signed by*  
**WARDELL HENNING**  
May 08, 2020

QUALITY  
8  
CHECKED



19283

## TAKEOFF MINIMUMS, (OBSTACLE) DEPARTURE PROCEDURES, AND DIVERSE VECTOR AREA (RADAR VECTORS)



### PADUCAH, KY

#### BARKLEY RGNL (PAH)

##### TAKEOFF MINIMUMS AND (OBSTACLE) DEPARTURE PROCEDURES

AMDT 3 06271 (FAA)

TAKEOFF OBSTACLE NOTES: **Rwy 4**, multiple trees and bushes beginning 131' from DER, 13' left of centerline, up to 100' AGL/452' MSL. Multiple trees beginning 697' from DER, 19' right of centerline, up to 100' AGL/464' MSL. Pole 1301' from DER, 316' right of centerline, up to 17' AGL/415' MSL. **Rwy 14**, multiple trees beginning 858' from DER, 77' left of centerline, up to 100' AGL/487' MSL. Road 551' from DER, 144' left of centerline, 17' AGL/422' MSL. Tree 788' from DER, 13' right of centerline, up to 100' AGL/439' MSL. Terrain 13' from DER, 320' right of centerline, 0' AGL/404' MSL. **Rwy 22**, multiple terrain and trees beginning 128' from DER, 30' left of centerline, up to 100' AGL/507' MSL. Road 981' from DER, 692' right of centerline, 17' AGL/444' MSL. Terrain 76' from DER, 3' right of centerline, 0' AGL/420' MSL. Terrain 25' from DER, 388' right of centerline, 0' AGL/411' MSL. **Rwy 32**, multiple trees beginning 376' from DER, 173' right of centerline, up to 100' AGL/458' MSL. Multiple trees and terrain beginning 31' from DER, 42' left of centerline, up to 100' AGL/462' MSL.

### PARIS, TN

#### HENRY COUNTY (PHT)

##### TAKEOFF MINIMUMS AND (OBSTACLE) DEPARTURE PROCEDURES

ORIG 10070 (FAA)

TAKEOFF OBSTACLE NOTES: **Rwy 2**, vehicle on road 772' from DER, 93' right of centerline, up to 15' AGL/589' MSL. Trees beginning 1232' from DER, 258' left of centerline, up to 100' AGL/669' MSL. **Rwy 20**, tree 2808' from DER, 630' right of centerline, 80' AGL/651' MSL. Rising terrain beginning 274' from DER, 388' left of centerline, 604' MSL.

### PIKEVILLE, KY

#### PIKE COUNTY-HATCHER FIELD (PBX)

##### TAKEOFF MINIMUMS AND (OBSTACLE) DEPARTURE PROCEDURES

ORIG 09127 (FAA)

TAKEOFF MINIMUMS: **Rwy 9**, 300-1 or std. w/ min. climb of 453' per NM to 2300 or 1000-3 for climb in visual conditions.

DEPARTURE PROCEDURE: **Rwy 9**, for climb in visual conditions: cross Pike County-Hatcher Field airport at or above 2300 before proceeding on course.

TAKEOFF OBSTACLE NOTES: **Rwy 9**, tree 4788' from DER, 1173' right of centerline, 20' AGL/1739' MSL. Multiple trees beginning 2702' from DER, 654' left of centerline and 965' right of centerline, up to 20' AGL/1770' MSL.

### PINE KNOT, KY

#### MC CREARY COUNTY (18I)

##### TAKEOFF MINIMUMS AND (OBSTACLE) DEPARTURE PROCEDURES

ORIG 14317 (FAA)

DEPARTURE PROCEDURE: **Rwy 4**, climb heading 040° to 1900 before turning right. **Rwy 22**, climb heading 220° to 2000 before turning left.

TAKEOFF OBSTACLE NOTES: **Rwy 4**, trees beginning 73' from DER, 15' left of centerline, 218' right of centerline, up to 100' AGL/1439' MSL. **Rwy 22**, trees beginning 473' from DER, 189' left of centerline, 380' right of centerline, up to 100' AGL/1499' MSL.

### PORTLAND, TN

#### PORTLAND MUNI (1M5)

##### TAKEOFF MINIMUMS AND (OBSTACLE) DEPARTURE PROCEDURES

ORIG 07214 (FAA)

TAKEOFF OBSTACLE NOTES: **Rwy 1**, tree 501' from DER, 180' right of centerline, 100' AGL/839' MSL. Tree 1564' from DER, 507' left of centerline, 100' AGL/839' MSL. **Rwy 19**, multiple trees 673' from DER, 83' right of centerline, up to 100' AGL/919' MSL.

### PRESTONSBURG, KY

#### BIG SANDY RGNL (SJS)

##### TAKEOFF MINIMUMS AND (OBSTACLE) DEPARTURE PROCEDURES

AMDT 1A 13234 (FAA)

TAKEOFF OBSTACLE NOTES: **Rwy 21**, multiple trees and poles beginning 250' from DER, 11' right of centerline, up to 72' AGL/1272' MSL. Multiple trees and poles beginning 294' from DER, 35' left of centerline, up to 63' AGL/1283' MSL.

### PRINCETON, KY

#### PRINCETON-CALDWELL COUNTY (2M0)

##### TAKEOFF MINIMUMS AND (OBSTACLE) DEPARTURE PROCEDURES

ORIG 13206 (FAA)

TAKEOFF MINIMUMS: **Rwy 5**, 300-1¼ or std. w/min. climb of 280' per NM to 900.

TAKEOFF OBSTACLE NOTES: **Rwy 5**, trees beginning 14' from DER, 434' right of centerline, up to 100' AGL/779' MSL. Trees beginning 314' from DER, 371' left of centerline, up to 58' AGL/577' MSL. **Rwy 23**, structures and terrain beginning 11' from DER, 198' right of centerline, up to 4' AGL/599' MSL. Structures and terrain beginning 40' from DER, 249' left of centerline, up to 4' AGL/593' MSL. Trees beginning 385' from DER, 48' right of centerline, up to 73' AGL/622' MSL. Trees beginning 421' from DER, 350' left of centerline, up to 68' AGL/647' MSL. Utility poles beginning 764' from DER, 176' right of centerline, up to 33' AGL/613' MSL.

27 FEB 2020 to 26 MAR 2020

27 FEB 2020 to 26 MAR 2020



19283

## TAKEOFF MINIMUMS, (OBSTACLE) DEPARTURE PROCEDURES, AND DIVERSE VECTOR AREA (RADAR VECTORS)

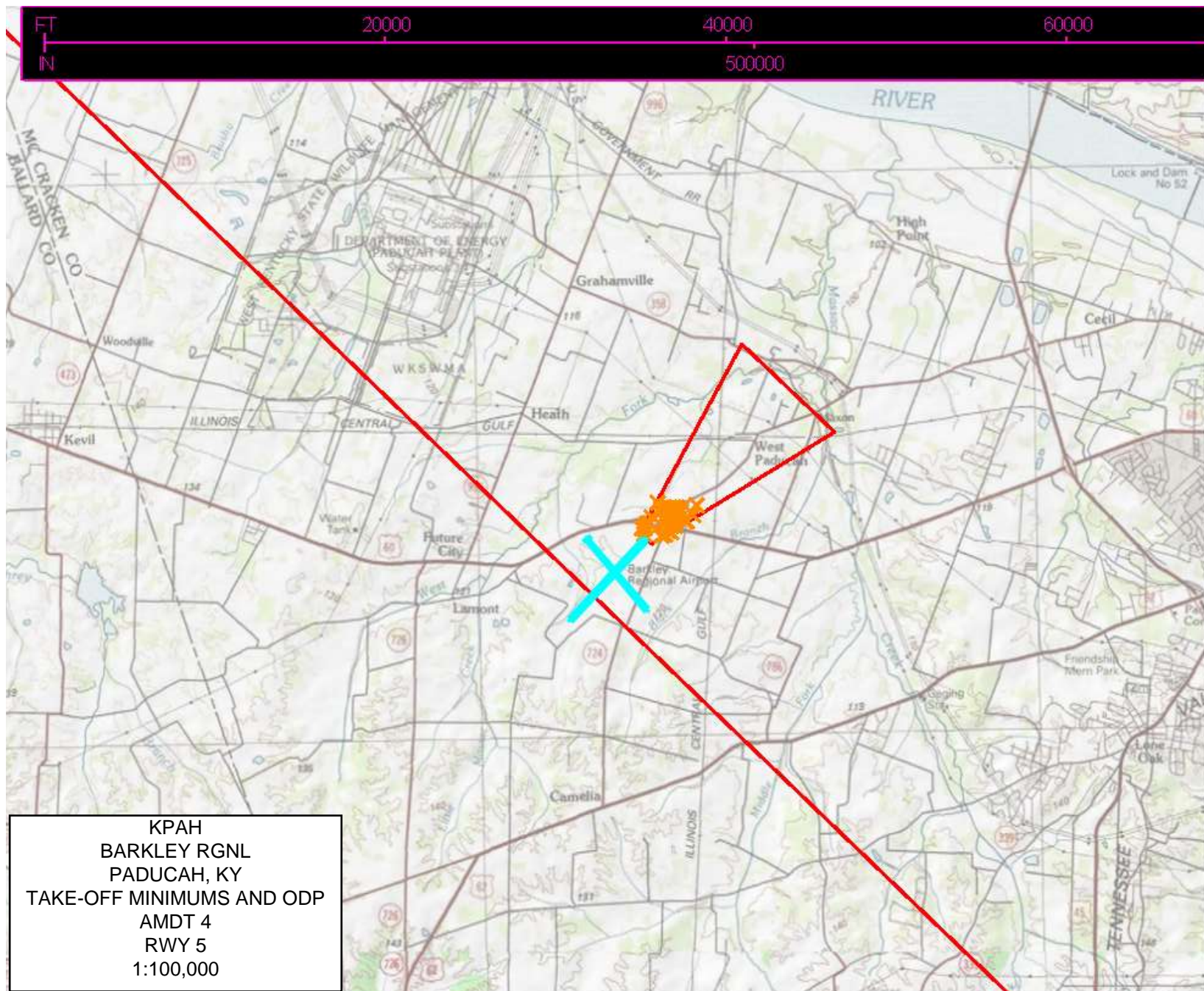


SE-1

200000

KPAH  
BARKLEY RGNL  
PADUCAH, KY  
TAKE-OFF MINIMUMS AND ODP  
AMDT 4  
RWY 5  
1:500,000







NM  
FT

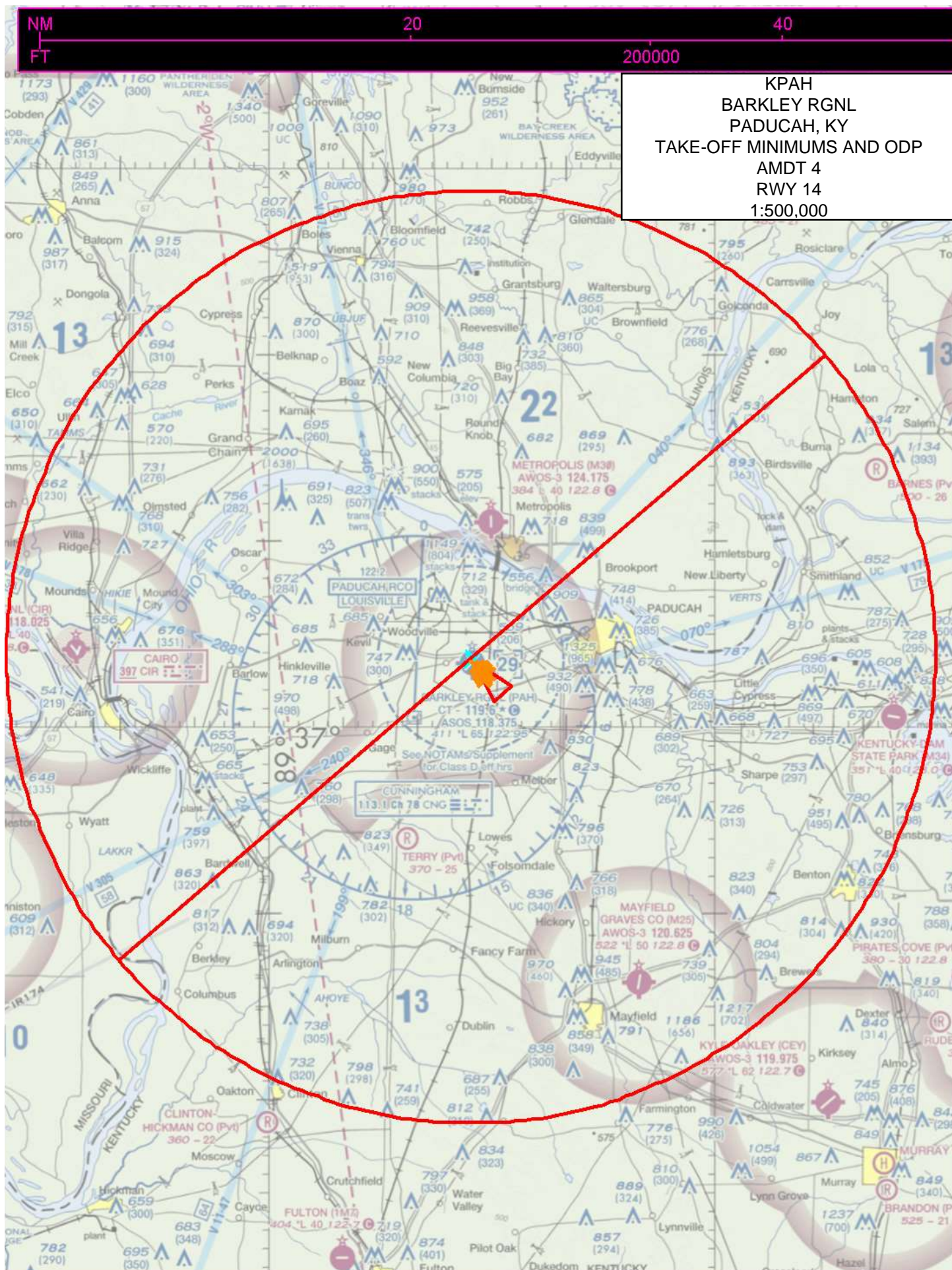
20

40

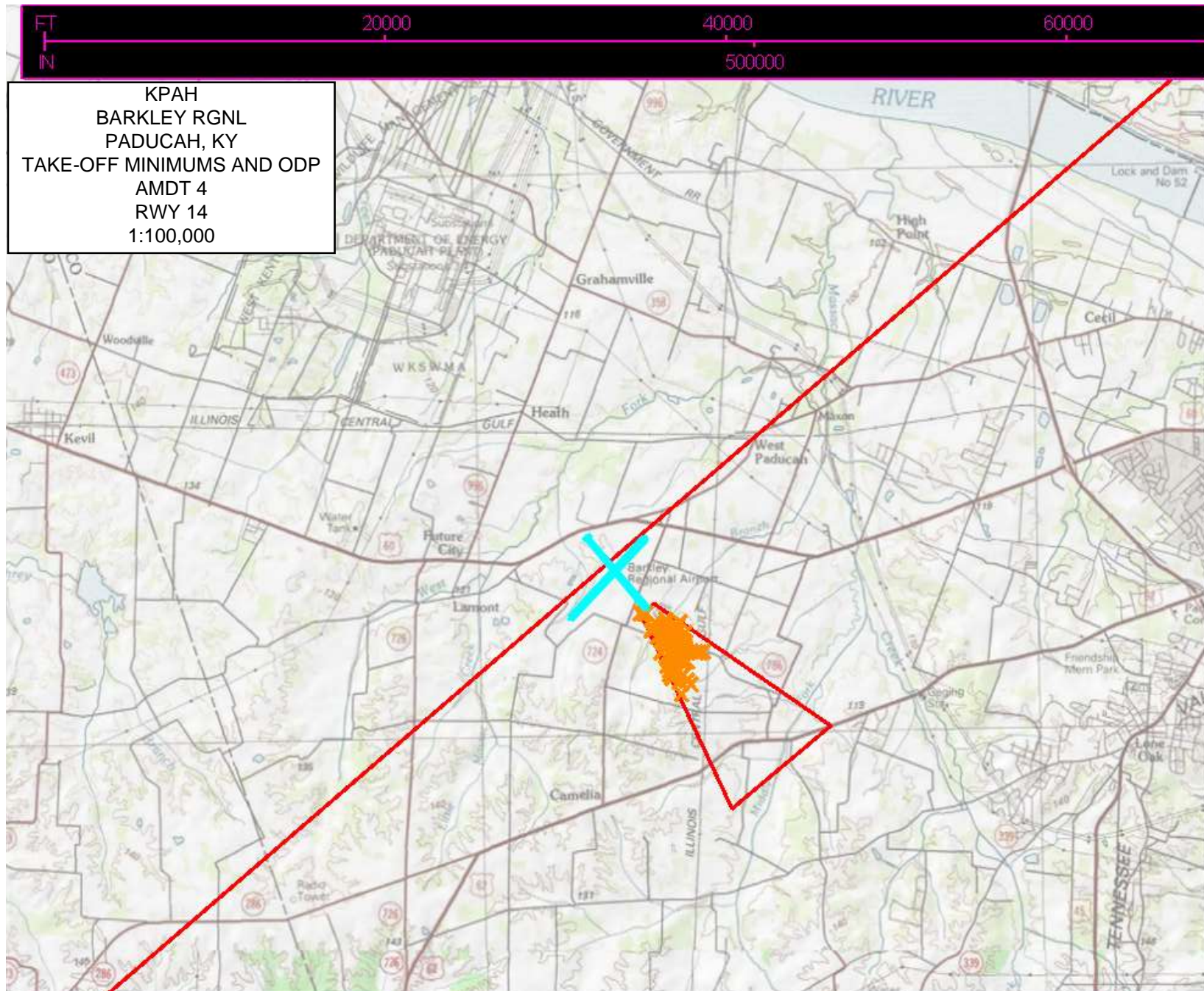
200000

KPAH  
BARKLEY RGNL  
PADUCAH, KY  
TAKE-OFF MINIMUMS AND ODP

AMDT 4  
RWY 14  
1:500,000









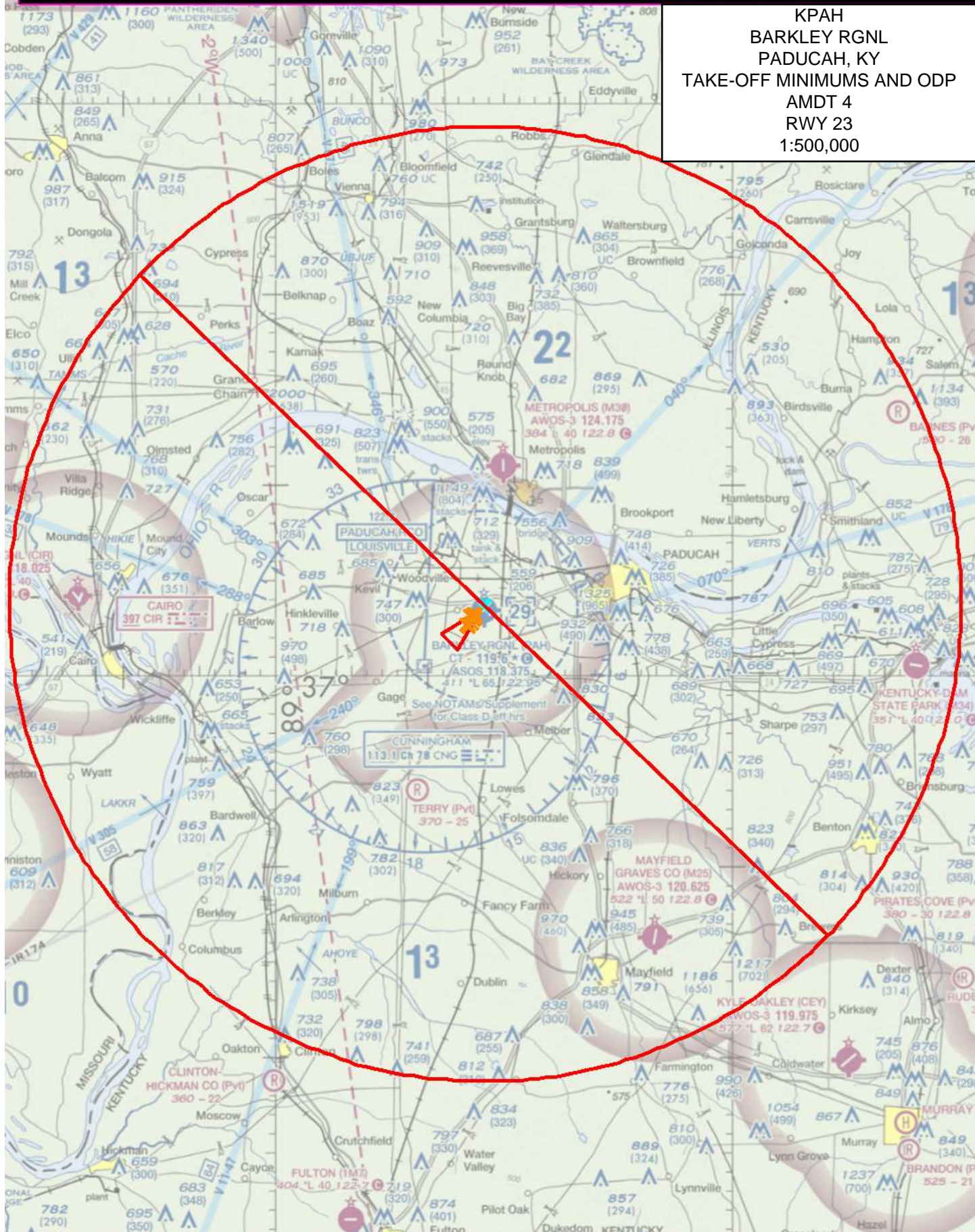
NM  
FT

20

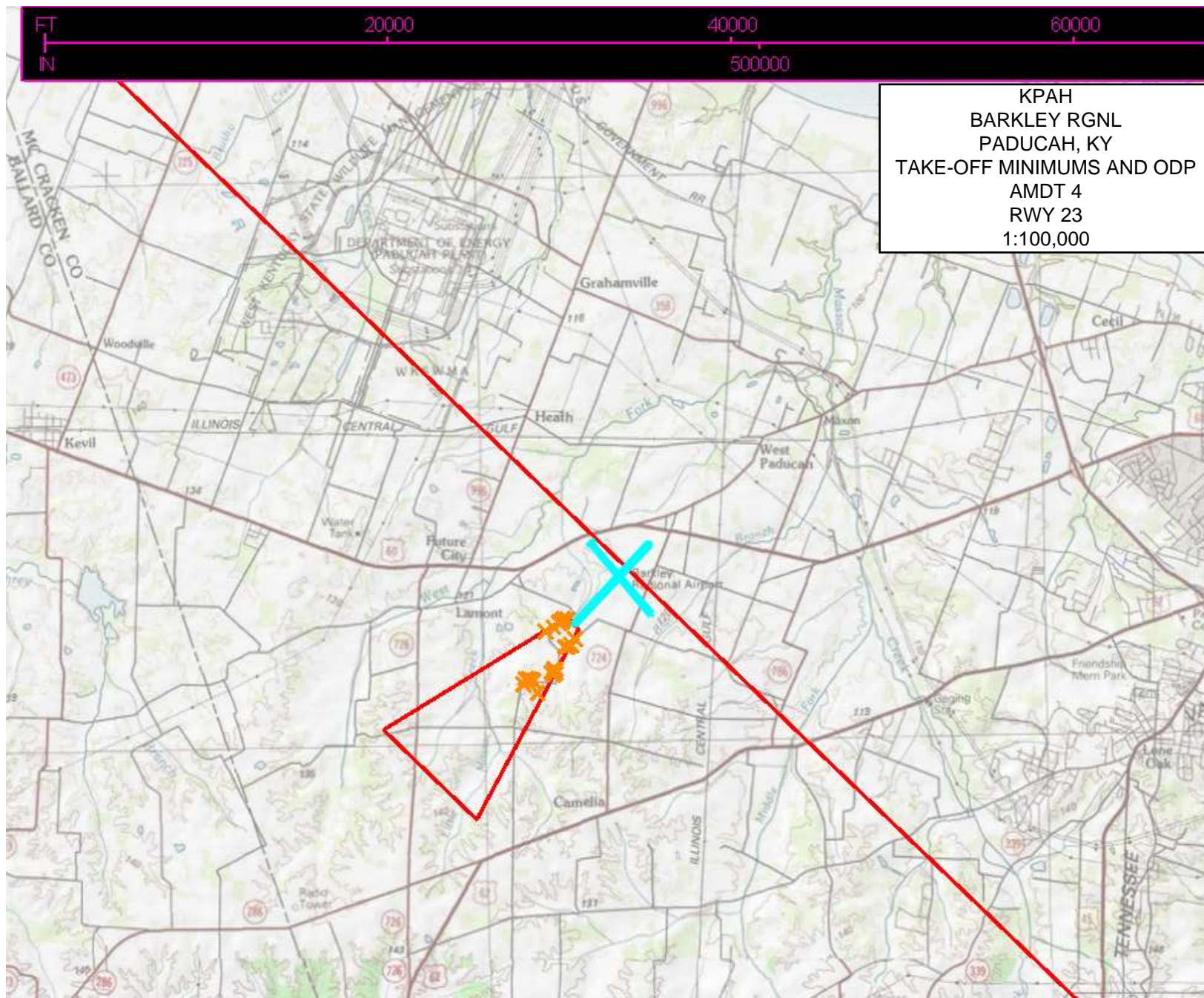
40

200000

KPAH  
BARKLEY RGNL  
PADUCAH, KY  
TAKE-OFF MINIMUMS AND ODP  
AMDT 4  
RWY 23  
1:500,000









200000

KPAH  
BARKLEY RGNL  
PADUCAH, KY  
TAKE-OFF MINIMUMS AND ODP  
AMDT 4  
RWY 32  
1:500,000



