

Flight Procedures Cover Page	Task Action: FLIGHT CHECK	Task Type: IAP	Estimated Chart Date: 08/10/2023	APWS Task ID: 9CC17FECF15F43FFBBBDEA96600E5C1A	APWS Project ID: F75C873D990C4E868335C10790494F98
Procedure: RNAV (GPS) Y RWY 28R AMDT 6		Enroute: NO	Specialist: Marsh, Andre		Agreement Number:
Airport ID: KPIT			Airport City: PITTSBURGH		State: PA
Facility ID:	Facility Type:	Flight Inspection Remark Type: New FC Slot			
<div>Procedure Comments: HARD DATE</div> <div>CONTACT: JASON KRETSCHMER, AJV-A421, 405-954-4019</div> <div><div>Digitally signed by JASON KRETSCHMER Jun 09, 2023</div><div><div>QUALITY 38 CHECKED</div><div>QUALITY 34 CHECKED</div></div></div>					

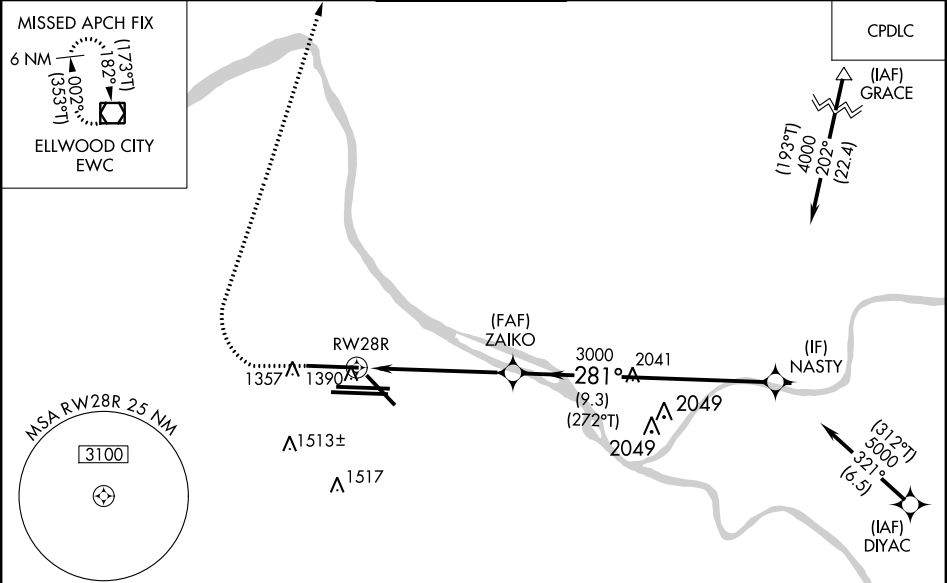
WAAS CH 40027 W28D	APP CRS 281°	Rwy Idg TDZE Apt Elev	10102 1174 1203
--	------------------------	-----------------------------	--

RNAV (GPS) Y RWY 28R

PITTSBURGH INTL (PIT)

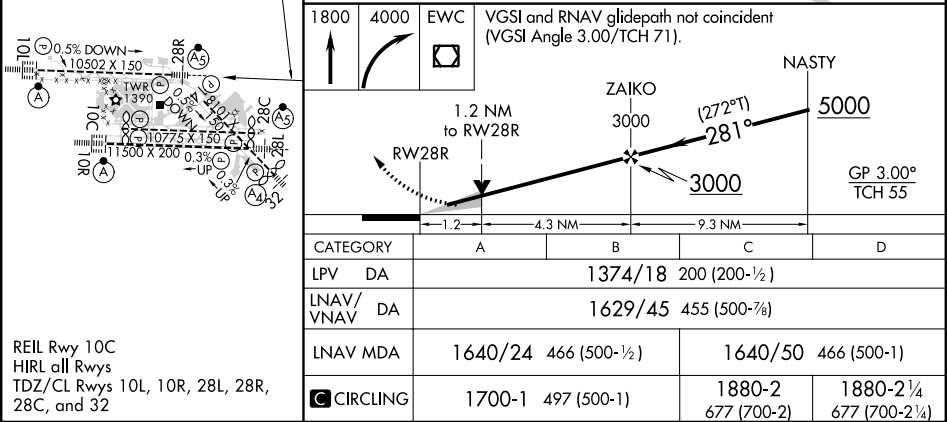
RNP APCH - GPS.	MAISR	MISSED APPROACH: Climb to 1800 then climbing right turn to 4000 direct EWC VOR/DME and hold.
<div><div></div><div></div></div> <div>Circling Rwy 14 NA at night. Simultaneous approach authorized. For uncompensated Baro-VNAV systems, LNAV/VNAV NA below -18°C or above 54°C. For inop ALS, increase LNAV Cats C/D visibility to 1½ SM. LNAV procedure NA during simultaneous operations. Use of FD or AP required during simultaneous operations.</div>	<div><div></div><div></div></div>	

D-ATIS ARR 127.25 DEP 135.9	PITTSBURGH APP CON 123.95 360.8	PITTSBURGH TOWER 128.3 291.7	GND CON SOUTH 121.9 348.6 NORTH 127.8 348.6	CLNC DEL 126.75 353.7
---	---	--	---	---------------------------------



ELEV 1203	D	TDZE 1174
-----------	----------	-----------

PROTOTYPE-NOT FOR NAVIGATION



WAAS CH 40027 W28D	APP CRS 281°	Rwy Idg 10102 TDZE 1174 Apt Elev 1203
--	------------------------	--

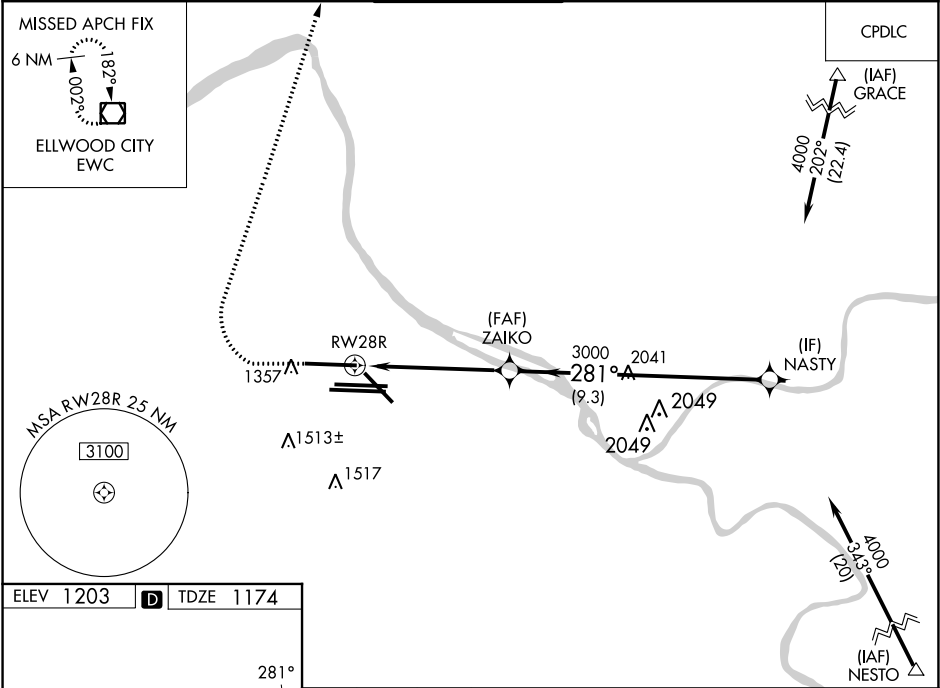
RNAV (GPS) Y RWY 28R
PITTSBURGH INTL (PIT')

⚠ For uncompensated Baro-VNAV systems, LNAV/VNAV NA below -18°C (0°F) or above 54°C (130°F). Simultaneous approach authorized. DME/DME RNP-0.3 NA. For inop ALS, increase LNAV Cats C/D visibility to 1½ SM. LNAV procedure NA during simultaneous operations. Use of FD or AP required during simultaneous operations.

MALSR

⚠ MISSED APPROACH: Climb to 1800 then climbing right turn to 4000 direct EWC VOR/DME and hold.

D-ATIS ARR 127.25 DEP 135.9	PITTSBURGH APP CON 123.95 360.8	PITTSBURGH TOWER 128.3 291.7	GND CON SOUTH 121.9 348.6 NORTH 127.8 348.6	CLNC DEL 126.75 353.7
---	---	--	---	---------------------------------



ELEV **1203** **D** TDZE **1174**

REIL Rwy 10C
HIRL all Rws
TDZ/CL Rws 10L, 10R, 28L, 28R, 28C, and 32

1800 4000 EWC

VGSI and RNAV glidepath not coincident (VGSI Angle 3.00/TCH 71).

*LNAV only

*1.2 NM to RWY 28R

NASTY

ZAIKO

3000

281°

4000

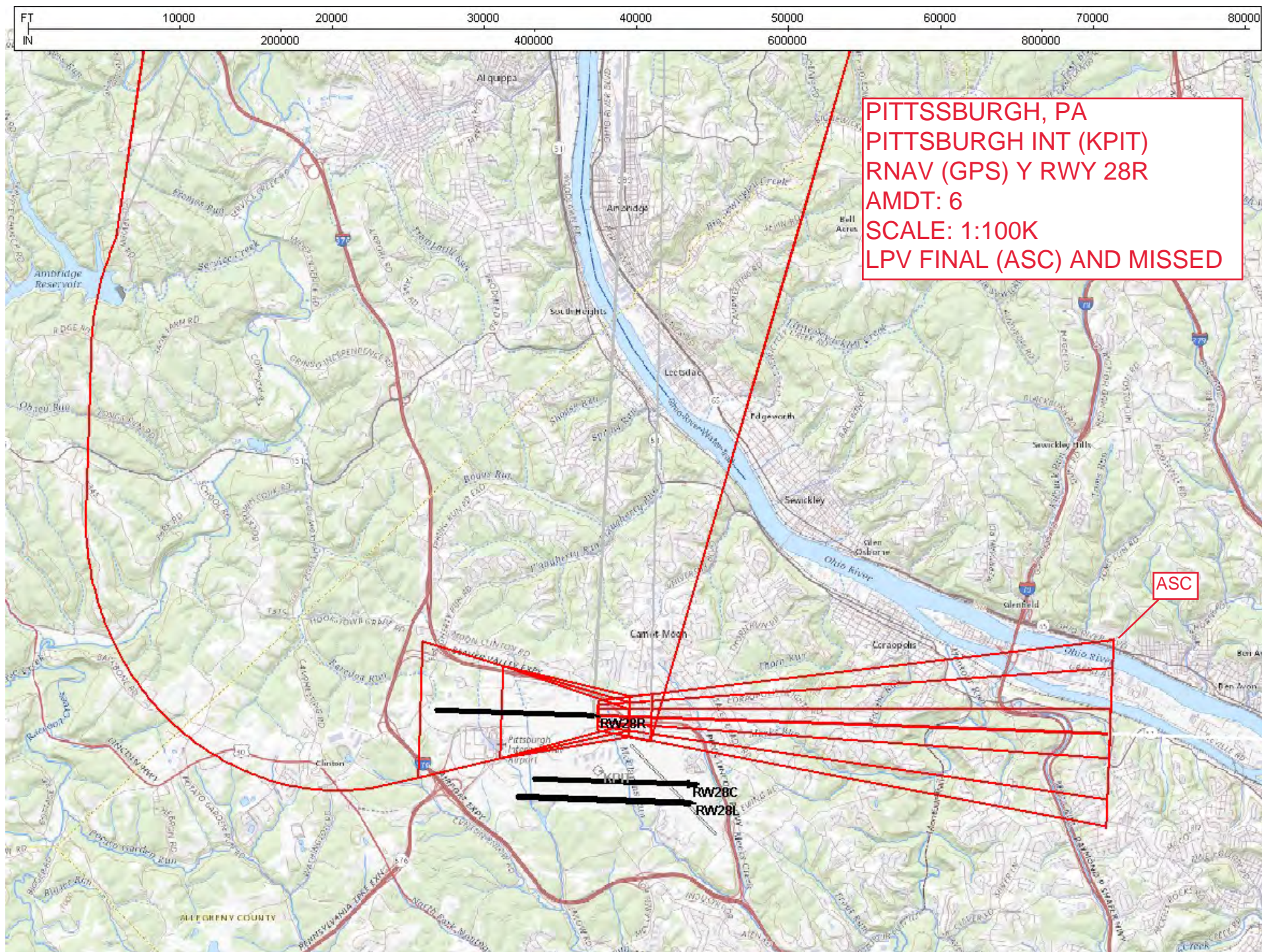
GP 3.00° TCH 55

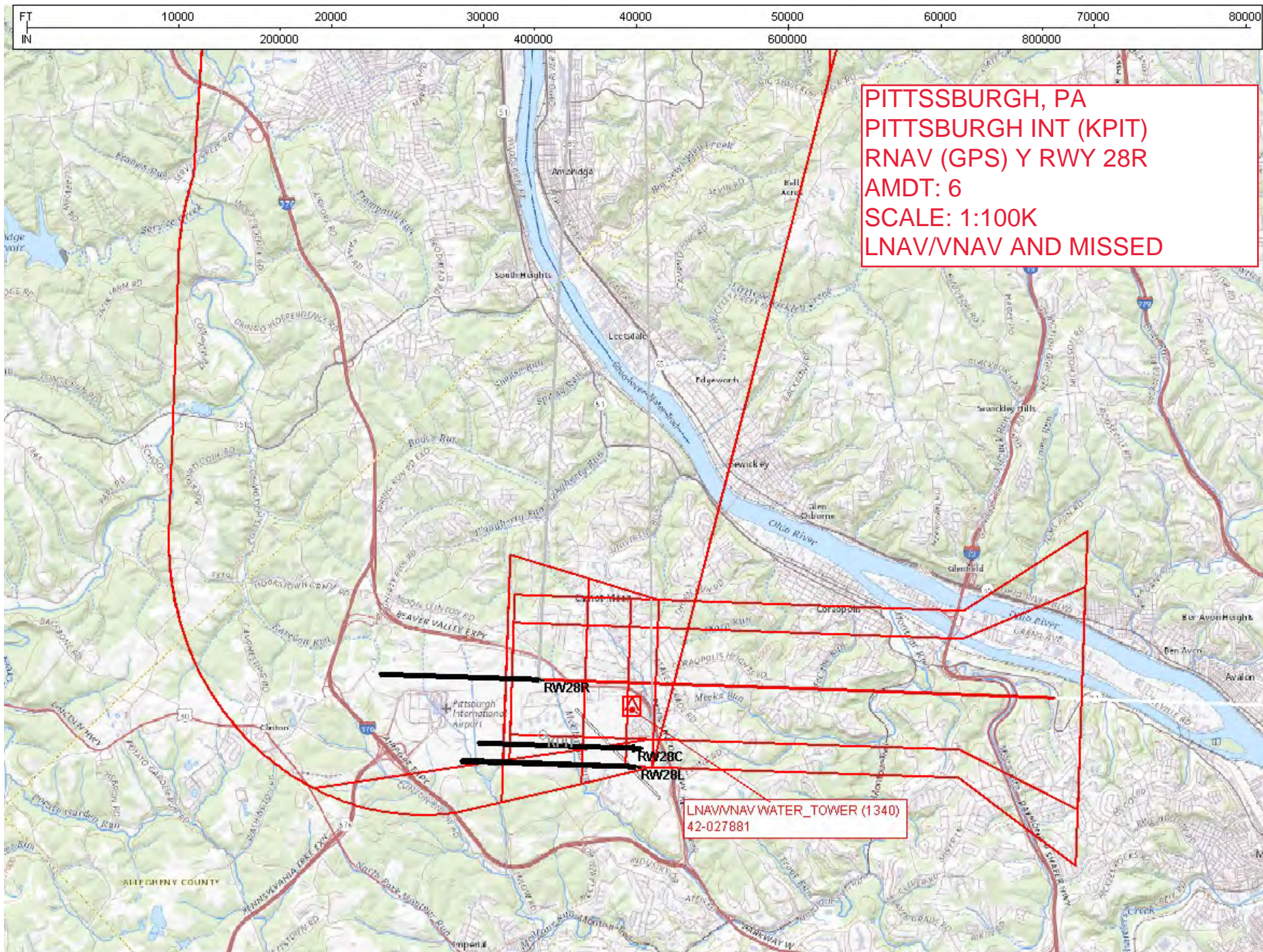
1.2 NM 4.4 NM 9.3 NM

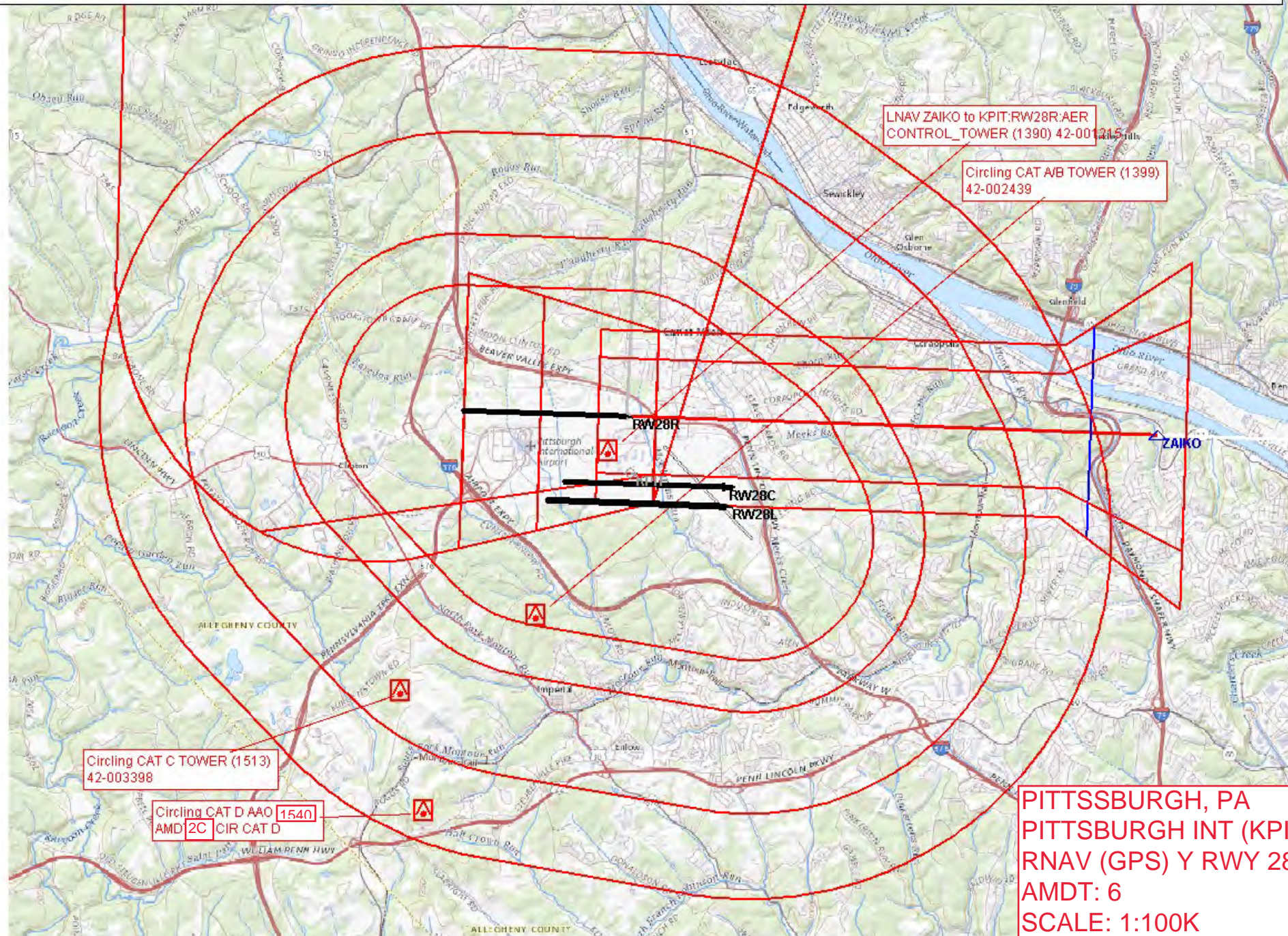
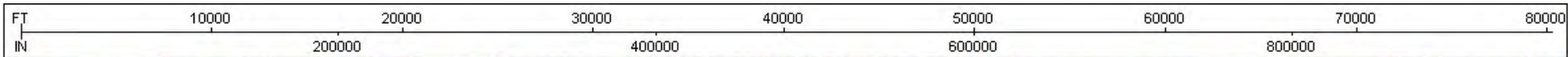
CATEGORY	A	B	C	D
LPV DA	1374/18 200 (200-½)			
LNAV/VNAV DA	1629/45 455 (500-¾)			
LNAV MDA	1640/24 466 (500-½)		1640/50 466 (500-1)	
C CIRCLING	1700-1 497 (500-1)		1880-2 677 (700-2)	1880-2¼ 677 (700-2¼)

NE-4, 23 MAR 2023 to 20 APR 2023

NE-4, 23 MAR 2023 to 20 APR 2023







PITTSBURGH, PA
PITTSBURGH INT (KPIT)
RNAV (GPS) Y RWY 28R
AMDT: 6
SCALE: 1:100K
LNAV FINAL/MISSED/CIR

