

Flight Procedures Cover Page	Task Action: P-NOTAM	Task Type: IAP	Estimated Chart Date: 10/07/2021	APWS Task ID: 9BD0C245D43543E8B02BF2315F553E75	APWS Project ID: B1675316FB0E42A585F7D2693BC3CB61
Procedure: RNAV (GPS) RWY 5 AMDT 1D		Enroute: NO	Specialist: Donkor, Kweku		Agreement Number:
Airport ID: KWVL			Airport City: WATERVILLE		State: ME
Facility ID:	Facility Type:	Flight Inspection Remark Type:			
<p>Procedure Comments: P-NOTAM.</p> <p>CANCELS FDC 0/8817.</p> <p>ORDER 8260.3, CHAPTER 2, NEW CIRCLING CRITERIA APPLIED.</p> <p>CONTACT: LONNIE EVERHART 405-954-4576/DAVID TEFFETELLER 202-267-5177.</p>					

QUALITY  
45  
CHECKED

QUALITY  
26  
CHECKED

WAAS CH <b>70418</b> <b>W05A</b>	APP CRS <b>047°</b>	Rwy Idg TDZE Apt Elev	<b>5500</b> <b>309</b> <b>333</b>
--	------------------------	-----------------------------	---

RNAV (GPS) RWY 5  
WATERVILLE ROBERT LAFLEUR (WVL)

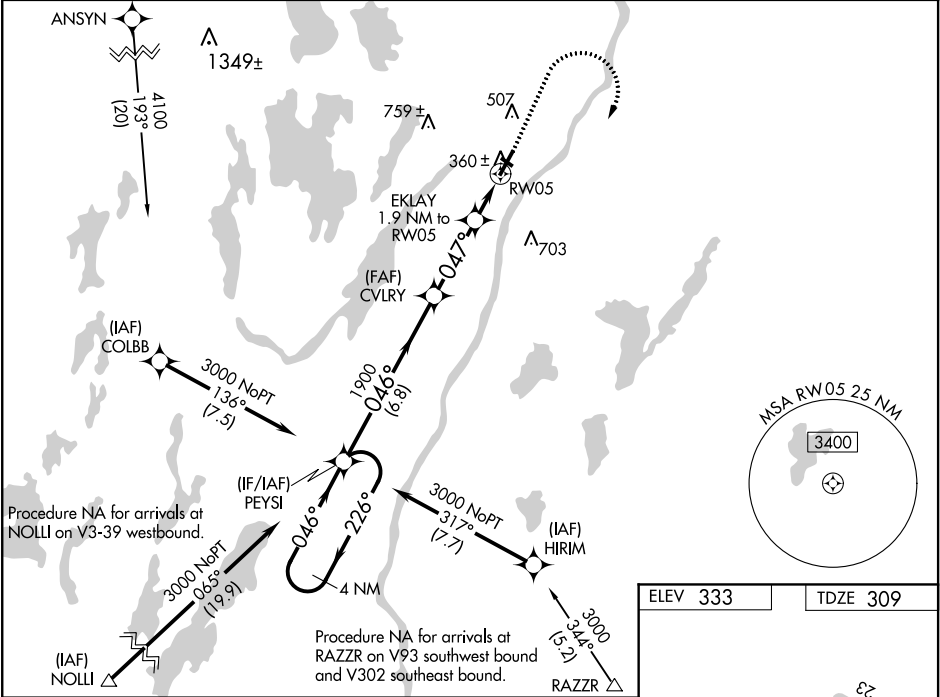
⚠ Inop table does not apply to LPV. For uncompensated Baro-VNAV systems, LNAV/VNAV NA below -1.5°C (5°F) or above 54°C (130°F). DME/DME RNP-0.3 NA. Helicopter visibility reduction below 3/4 SM NA. Baro-VNAV and VDP NA when using Augusta altimeter setting. When local altimeter setting not received, use Augusta altimeter setting and increase all DA 35 feet and all MDA 40 feet, increase visibility LNAV/VNAV all Cats 1/2 mile. Night Landing: Rwy 14 NA. For inop MALSF, increase LNAV/VNAV Cat D visibility to 1 mile and LNAV Cats C/D visibility to 3/4 mile. For inop MALSF, when using Augusta altimeter setting, increase LPV all Cats visibility to 3/4 mile, LNAV/VNAV Cat D visibility to 1 1/2 mile, and LNAV Cat D visibility to 1 mile.

MALSF

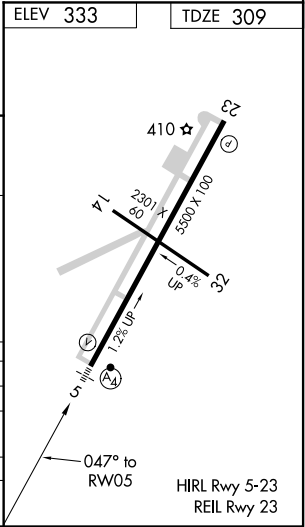
=

MISSED APPROACH:  
Climb to 1000 then climbing right turn to 3000 direct PEYSI and hold.

AWOS-3PT <b>118.375</b>	PORTLAND APP CON ★ <b>128.35 299.2</b>	CLNC DEL <b>124.6 299.2</b>	UNICOM <b>122.7 (CTAF) 0</b>
----------------------------	---	--------------------------------	---------------------------------



4 NM Holding Pattern		PEYSI	CVLRY	EKLAY 1.9 NM to RW05	1000	3000	PEYSI
GP 3.00° TCH 48		3000 ← 226°	046° → 046°	1900	047°	*920	*LNAV only.
		6.8 NM	3.1 NM	1 NM	0.9 NM		
CATEGORY	A	B	C	D			
LPV DA		509-3/4	200 (200-3/4)				
LNAV/VNAV DA		588-3/4	279 (300-3/4)				
LNAV MDA		620-3/4	311 (300-3/4)				
CIRCLING	860-1	527 (600-1)	860-1 1/2 527 (600-1 1/2)	900-2 567 (600-2)			



NE-1, 22 APR 2021 to 20 MAY 2021

NE-1, 22 APR 2021 to 20 MAY 2021



