

Flight Procedures Cover Page	Task Action: P-NOTAM	Task Type: IAP	Estimated Chart Date: 03/24/2022	APWS Task ID: 9B24913E72494A38BD8AA99AC0AB39C7	APWS Project ID: F2F59FFBA88B42FD907197A56A1B7AFF
Procedure: RNAV (GPS) RWY 8 AMDT 2B		Enroute: NO	Specialist: Cappabianco, Anthony		Agreement Number:
Airport ID: KPGV			Airport City: GREENVILLE		State: NC
Facility ID:	Facility Type:	Flight Inspection Remark Type:			
<div>Procedure Comments: CLEARs FDC NOTAM 1/2981.</div> <div>PROCESSED IAW TECHNICAL SUPPORT GROUP (AJF-17) MEMO DATED 07/07/2021, SUBJECT: GUIDANCE FOR PROCEDURAL CHANGES REQUIRING FLIGHT INSPECTION/VALIDATION.</div> <div>CONTACT CASIMIR TABAKA 405-954-7931.</div> <div><div>Digitally signed by CASIMIR L TABAKA Jan 27, 2022</div><div><div>QUALITY 10 CHECKED</div><div>QUALITY 38 CHECKED</div></div></div>					

APP CRS	Rwy Idg	4997
076°	TDZE	24
	Apt Elev	26

OLD

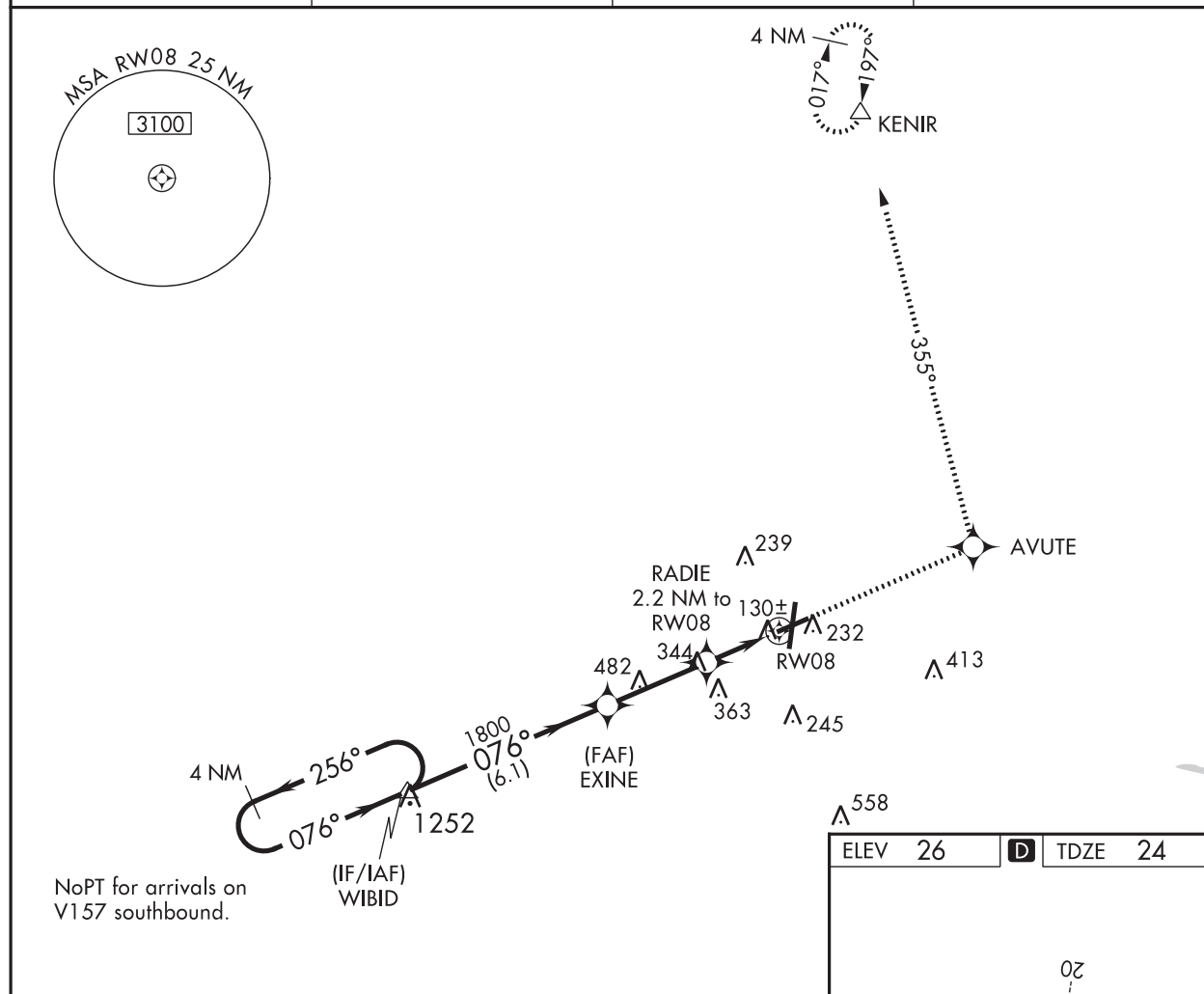
RNAV (GPS) RWY 8

PITT-GREENVILLE (PGV)

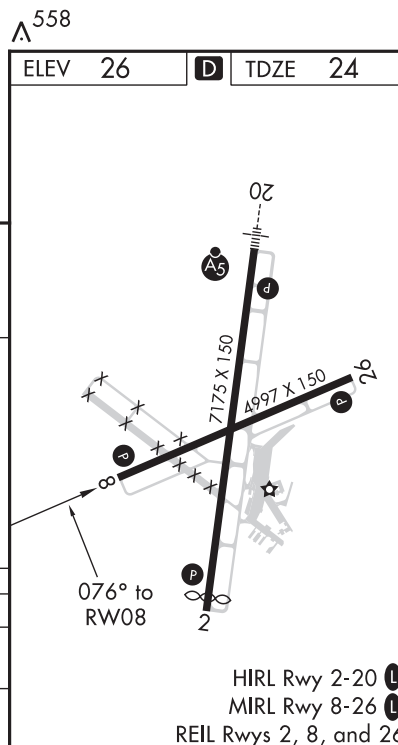
⚠ DME/DME RNP-0.3 NA. Visibility reduction by helicopters NA. When local altimeter setting not received use Washington altimeter setting and increase all MDA 60 feet and increase LNAV Cats C and D and Circling Cat C visibilities ¼ mile.

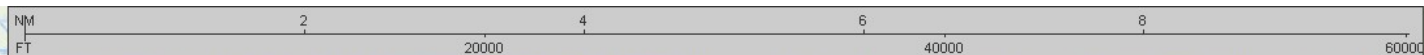
MISSED APPROACH: Climb to 3000 direct AVUTE and via 355° track to KENIR and hold.

AWOS-3 128.425	WASHINGTON CENTER 123.85 279.65	CLNC DEL 122.35	UNICOM 122.8 (CTAF) L
--------------------------	---	---------------------------	--



VGSi and descent angles not coincident (VGSi Angle 4.00/TCH 53).			
4 NM Holding Pattern	WIBID	EXINE	RADIE
2700	1800	780	
256°	076°	3.14°	2.2 NM to RWY 08
076°	076°	TCH 42	
6.1 NM	3 NM	2.2 NM	
CATEGORY	A	B	C
LNAV MDA	500-1 476 (500-1)	500-1½ 476 (500-1½)	500-1½ 476 (500-1½)
CIRCLING	620-1 594 (600-1)	620-1½ 594 (600-1½)	620-2 594 (600-2)





KPGV
PITT-GREENVILLE
GREENVILLE, NC
SCALE: 100,000
CIRCLING AREAS

