



Flight Procedures Cover Page	Task Action: FLIGHT CHECK	Task Type: IAP	Estimated Chart Date: 05/19/2022	APWS Task ID: 9B1CFA8E963F42AF93D87D8399D7C40F	APWS Project ID: 574DBCE693AD4EB89E05FD480729D80D
Procedure: RNAV (GPS) RWY 36L AMDT 1		Enroute: NO	Specialist: Tucker, Andre		Agreement Number:
Airport ID: KTUL			Airport City: TULSA		State: OK
Facility ID:	Facility Type:	Flight Inspection Remark Type: New FC Slot			
<p>Procedure Comments: HARD DATE: ADDED DISPLACED THRESHOLD FOR RWY 18R.</p> <p>ADDED LPV MINS.</p> <p>PENDING AIRNAV DATA 05-19-2022 USED FOR KTUL.</p> <p>CONTACT DONALD LANIER: (405) 954-8242.</p>					

TULSA, OKLAHOMA

AL-432 (FAA)

FIG

WAAS CH 50344 XXXX	APP CRS 360°	Rwy Idg TDZE Apt Elev 6101 678 678
----------------------------------------	------------------------	------------------------------------------------------------------------

RNAV (GPS) RWY 36L

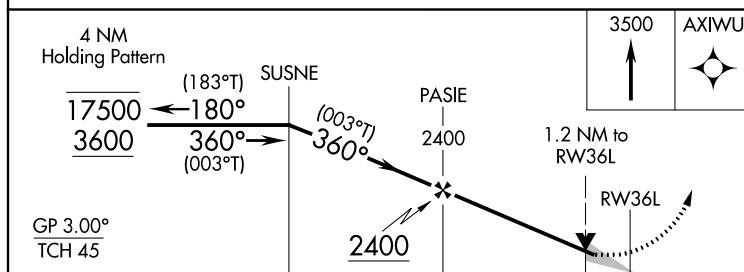
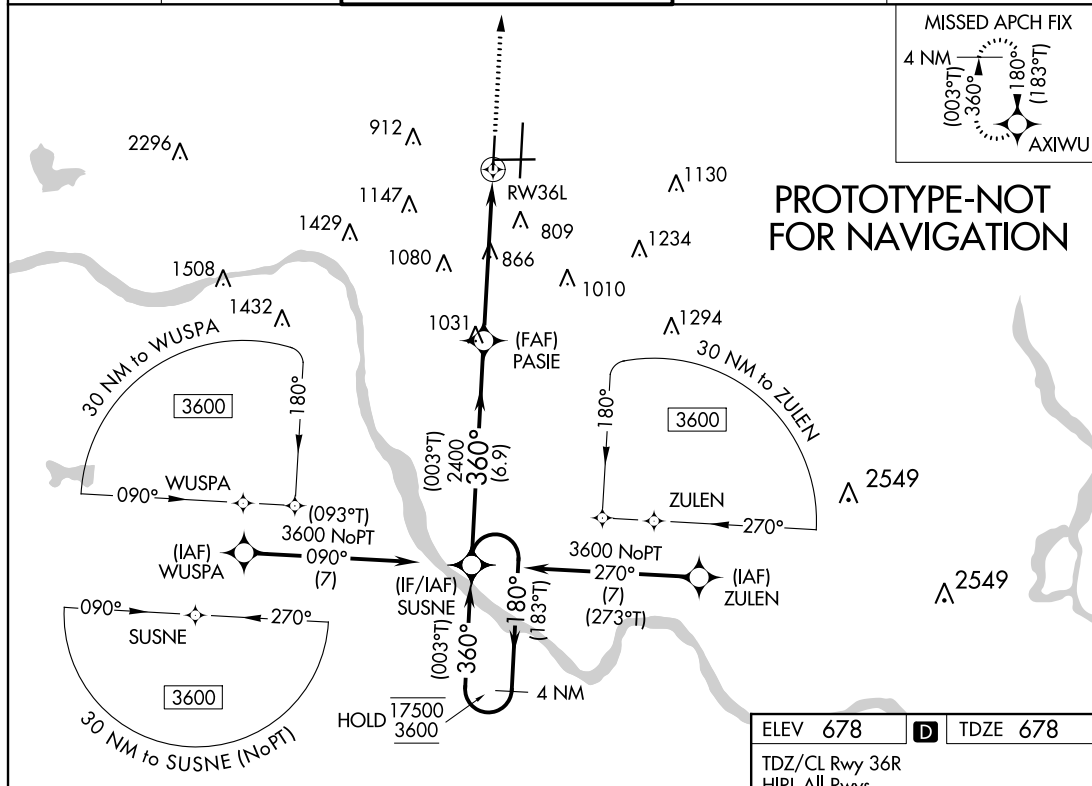
TULSA INTL (TUL)

RNP APCH - GPS.

▼ Use of FD or AP required during simultaneous operations. For uncompensated Baro-VNAV systems, LNAV/VNAV NA below -11°C or above 54°C. Simultaneous approach authorized.
▲ LNAV procedure NA during simultaneous operations.
 ASR

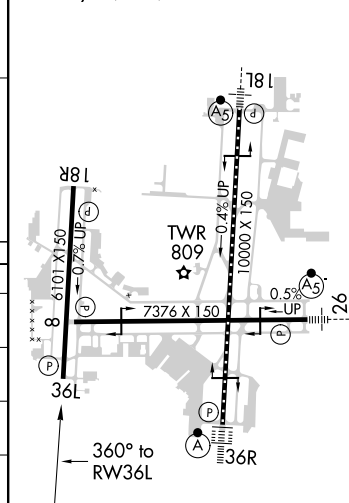
MISSED APPROACH:
Climb to 3500 direct
AXIWU and hold.

D-ATIS 124.9 377.2	TULSA APP CON 124.0 338.3	TULSA TOWER 121.2 310.8 (Rwys 18L-36R, 8-26) 118.7 257.8 (Rwy 18R-36L)	GND CON 121.9 348.6	CLNC DEL 134.05 284.7
------------------------------	-------------------------------------	--------------------------------------------------------------------------------------------	-------------------------------	---------------------------------



ELEV 678	D	TDZE 678
TDZ/CL Rwy 36R HIRL All Rwys REIL Rwys 8, 18R, 26 and 36L		

CATEGORY	A	B	C	D
LPV DA	928-3/4	250 (300-3/4)		
LNAV/VNAV DA	1086-1 1/8	408 (500-1 1/8)		
LNAV MDA	1120-1 442 (500-1)	1120-1 3/8 442 (500-1 3/8)		
C CIRCLING	1120-1 442 (500-1)	1160-1 482 (500-1)	1500-2 1/2 822 (900-2 1/2)	1520-2 3/4 842 (900-2 3/4)



AUTOMATED AL-432 RNAV (GPS) RWY 36L

SC-1
2-18-22
COMPILER: JD
REVIEWER:
DBL CHKR:
EFF DATE: FIG

TULSA, OKLAHOMA

Amdt1 FIG

36°12'N-95°53'W

TULSA INTL (TUL)

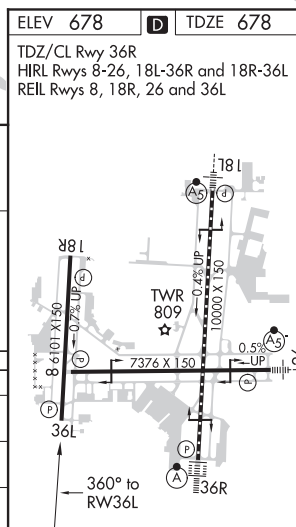
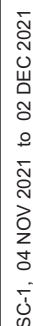
RNAV (GPS) RWY 36L

19003

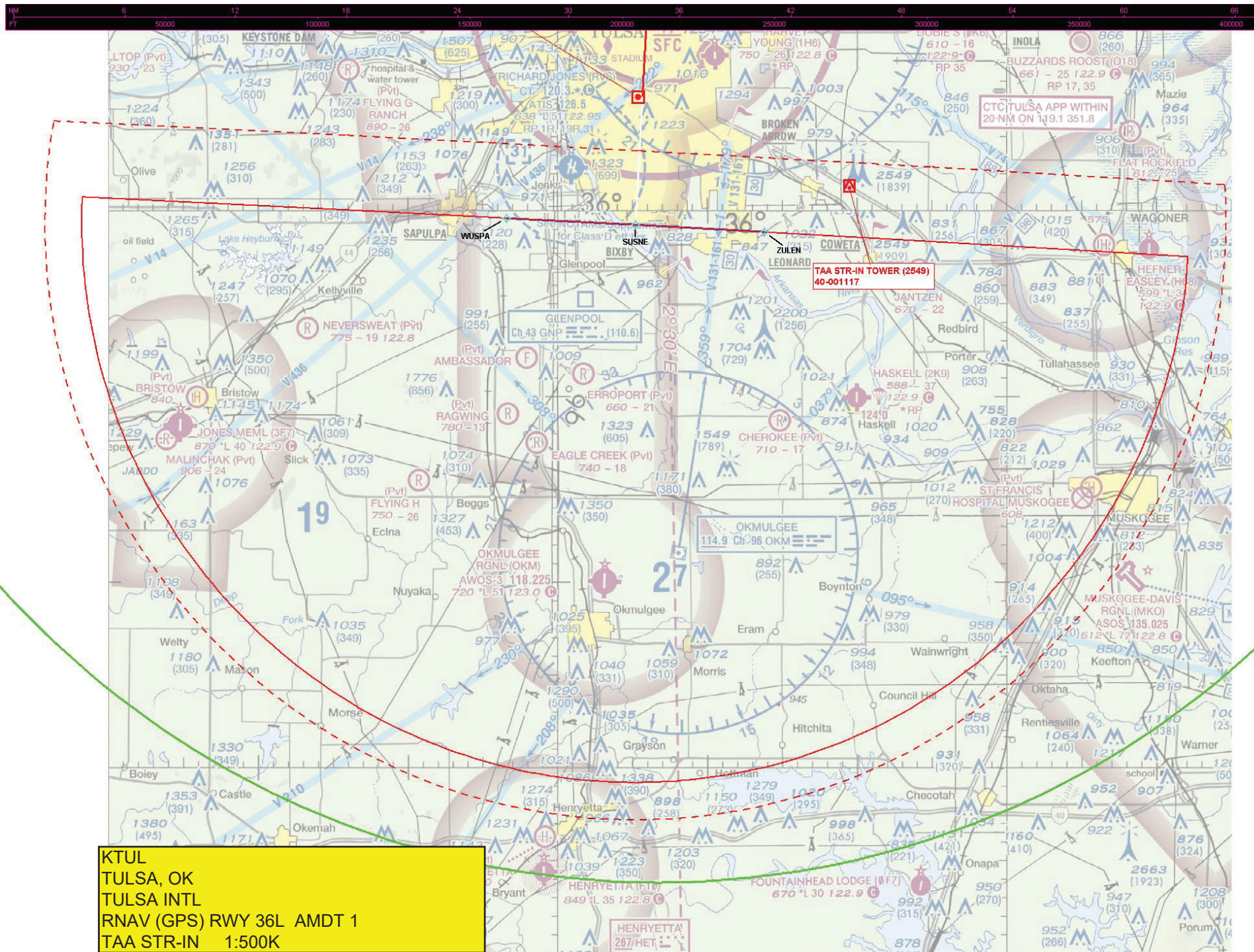
RNAV (GPS) RWY 36L
TULSA INTL (TUL)

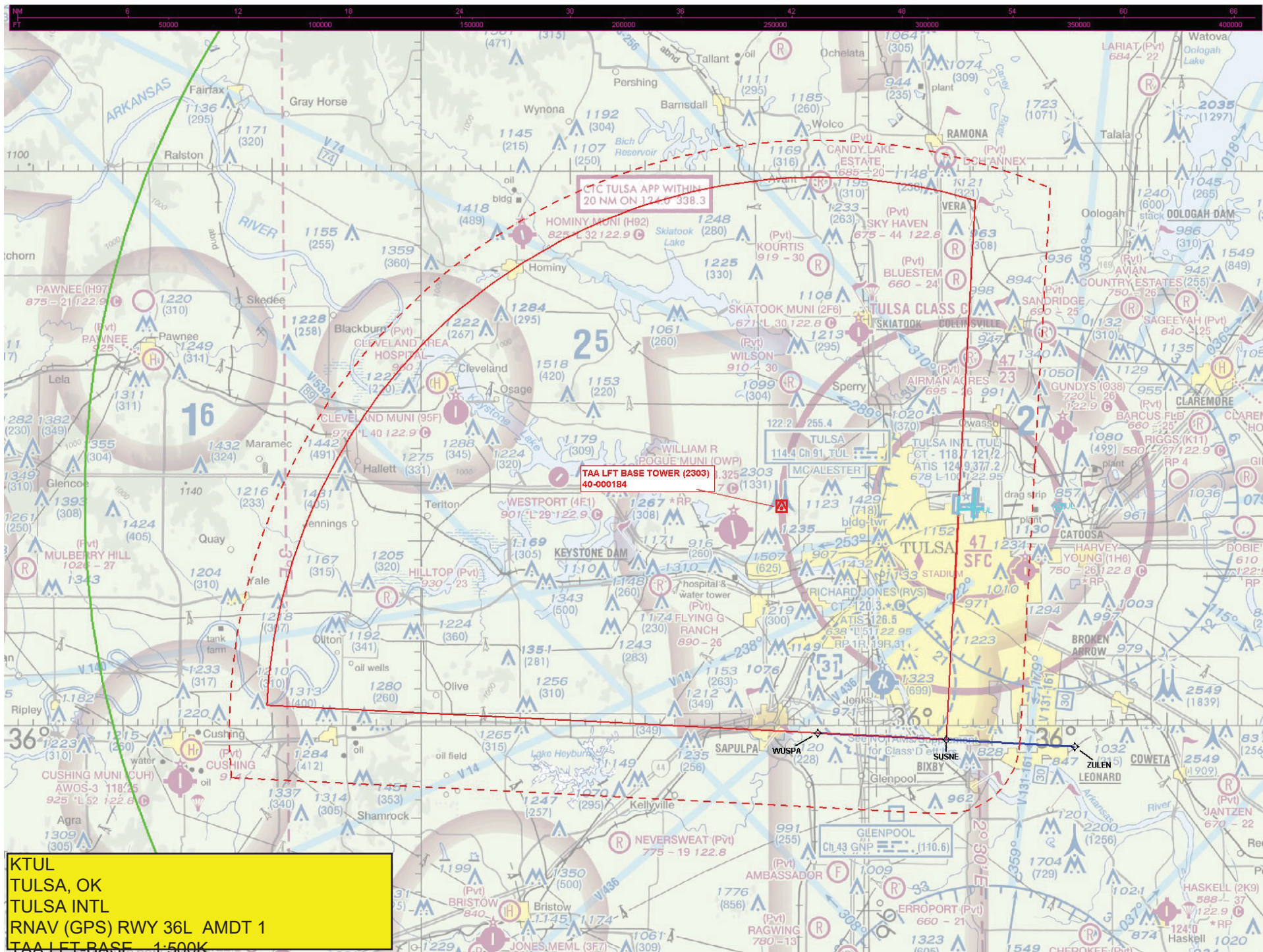
MISSED APPROACH:
Climb to 3500 direct
AXIWU and hold.

GND CON
121.9 348.6

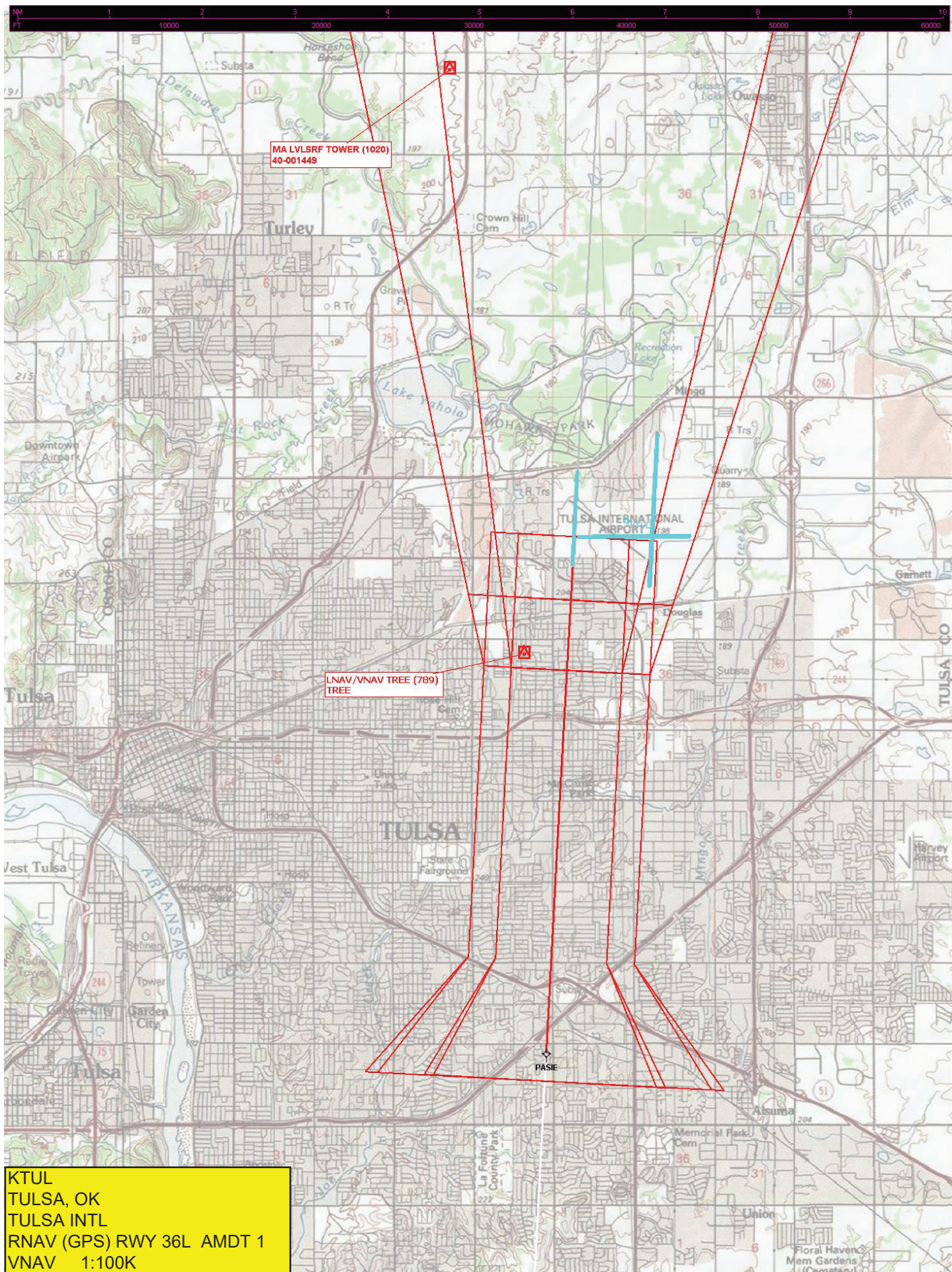


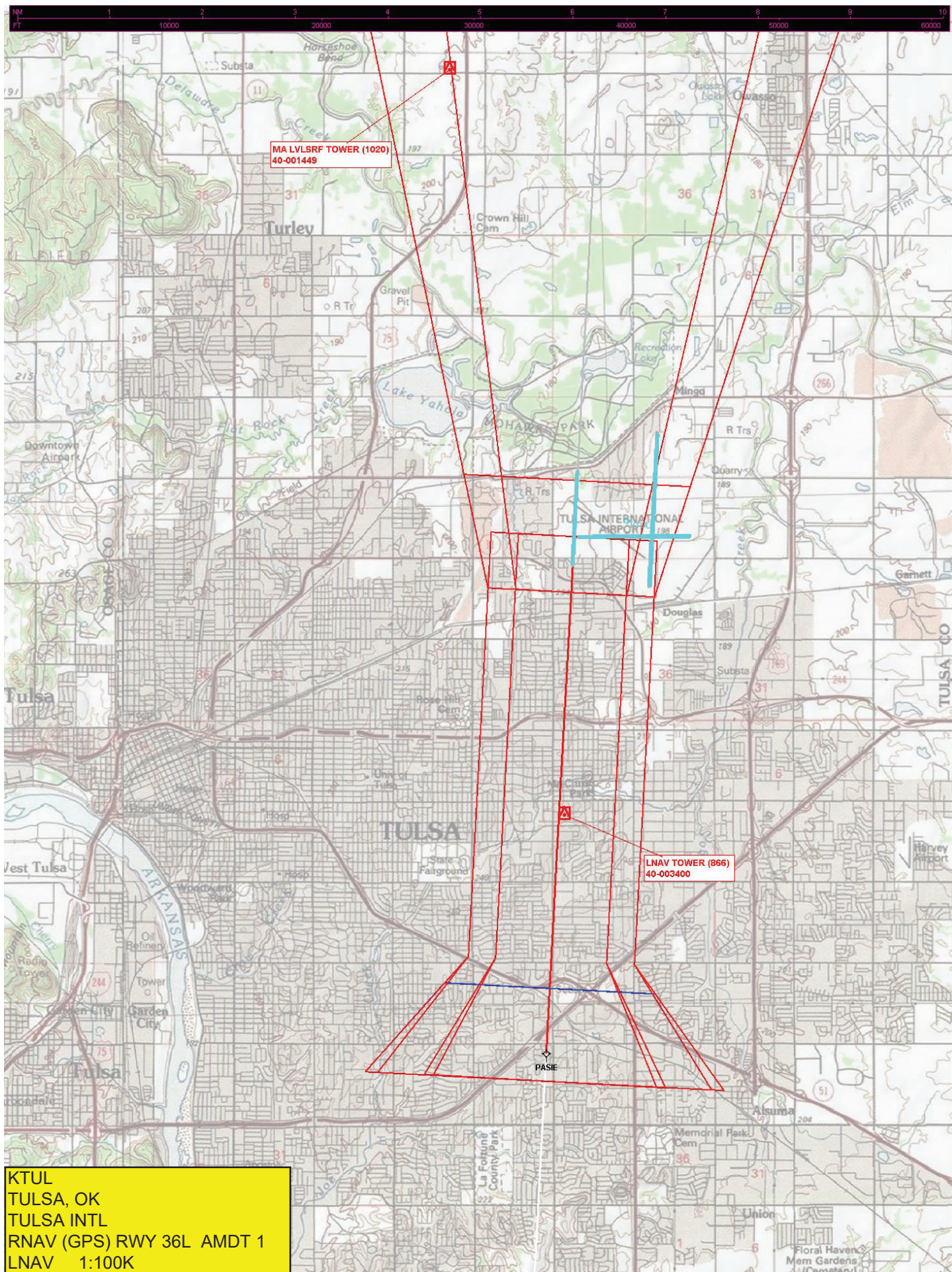
TULSA INTL (TUL)
RNAV (GPS) RWY 36L

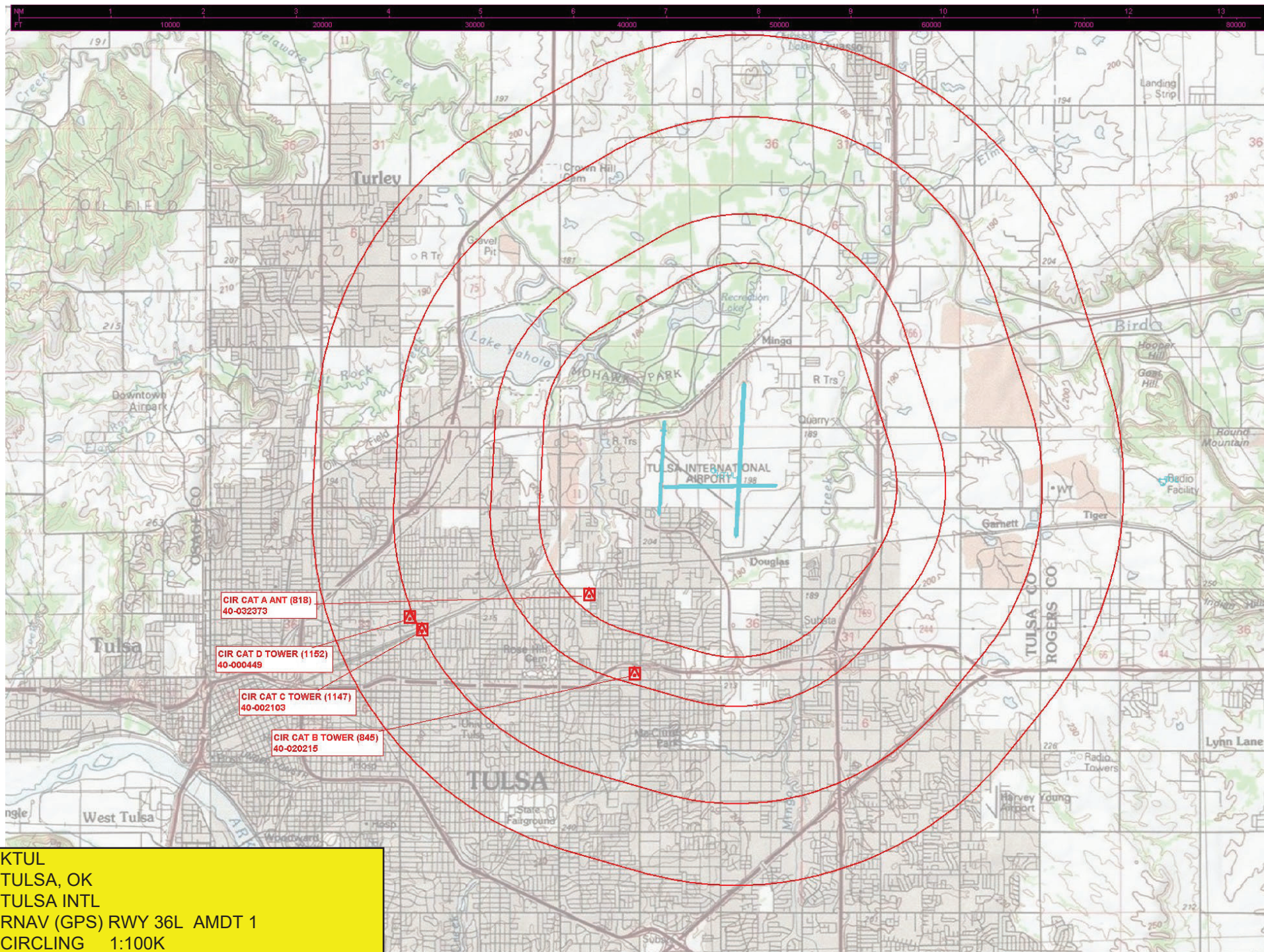




KTUL
TULSA, OK
TULSA INTL
RNAV (GPS) RWY 36L AMDT 1
TAA LFT BASE 1:500K









Federal Aviation Administration

Memorandum

Date: 20 March 2019

To: Program Manager, ASW-630J

From: Environmental Protection Specialist, ASW-630E

Subject: Improve Runway Safety Area
Rehabilitate Runway

Tulsa International Airport, TUL
Tulsa, OK

Tulsa International Airport, TUL, proposes to improve the Runway Safety Area (RSA) and rehabilitate the pavement of Runway 18R-36L. See attached figure for additional information. The scope of work is:

- 18R/36L Runway Safety Area (RSA) Improvements
 - Remove existing pavement markings and
 - Displace the north threshold
 - Remark the runway to designate a 100' runway width
 - Repair any pavement damage caused by the marking removal
 - Relocate the runway edge lights to reflect the 100' runway width
 - Relocate and modify the 18R Precision Approach Path Indicator
 - Relocate and modify the Glideslope
 - Survey as required to build the new 18R approach
 - Construction is planned for FY20
- 18R-36L pavement rehabilitation
 - Mill approximately 5" of existing Asphaltic Concrete Pavement
 - Replace in the milled area, new Asphaltic Concrete
 - Replace all pavement marking as needed
 - Construction is planned for FY21

FAA identifies no extraordinary circumstances as defined in FAA Order 1050.1F. The components of the proposed action qualifies for categorical exclusion 5-6.4(e).

**ROBERTO I
RAMOS**

Digitally signed by
ROBERTO I RAMOS
Date: 2019.03.20
09:34:29 -05'00'