

Flight Procedures Cover Page	Task Action: FLIGHT CHECK	Task Type: IAP	Estimated Chart Date: 09/10/2020	APWS Task ID: 9A71E04948514F9A8F4A61840C2C55C2	APWS Project ID: E8B11DBB24504D658ED01A08B1621A3A
Procedure: ILS OR LOC RWY 32 AMDT 7A		Enroute: NO	Specialist: Bagensie, Scott		Agreement Number:
Airport ID: KITH	Airport Name: ITHACA TOMPKINS RGNL		Airport City: ITHACA		State: NY
Facility ID:	Facility Type:	Flight Inspection Remark Type: New FC Slot			
<p><b>Procedure Comments:</b>  PENDING DATA FOR ILS. FACILITY CHANGE AT ITH: VOR/DME TO DME ANTENNA.  ITH VORMON PROJECT.</p> <p>CONTACT: LONNIE EVERHART, TEAM 3 MANAGER (AJV-A430), 405.954.4576 OR DAVID TEFFETELLER, SUB-TEAM MANAGER TEAM 3 (AJV-A433), 202.267.5177.</p>					



<b>FIPC BASIC FORM</b>						
<b>PROCEDURE:</b> ILS OR LOC RWY 32 AMDT 7A			<b>AIRPORT NAME:</b> ITHACA TOMPKINS RGNL		<b>AIRPORT ID:</b> KITH	<b>SPECIAL CONTROL NO:</b> YP-09-069-20
<b>FAC ID:</b> ITH		<b>CITY:</b> ITHACA			<b>ST:</b> NY	<b>ORIG CHART DATE:</b> 12/31/2020
<b>DFL TYPE:</b> PROC/A	<b>THIRD PARTY:</b> <input type="checkbox"/> YES	<b>EST. TIME ON SITE:</b> 0.4	<b>REIMB. NUMBER:</b> AC0721	<b>PTS TASK ID:</b>		
<b>PREFLIGHT NOTES</b>						
<b>REVIEWER:</b>					<b>DATE:</b>	
<b>COMMENTS:</b>					<b>CHECK ONE:</b> <input type="checkbox"/> FLT CK REQ <input type="checkbox"/> NFCR <input type="checkbox"/> REJECT	
					<b>YES</b>	<b>NO</b>
					<b>CPV COMPLETE?</b>	<b>X</b>
<b>PROCEDURE RESULTS</b>						
<b>INSPECTION DATE:</b> 10/15/2020	<b>CREW #:</b> VN137	<b>N #:</b> N79	<b>INSTRUMENT PROCEDURE STATUS:</b> <input checked="" type="checkbox"/> SAT <input type="checkbox"/> SAT W/CHANGES <input type="checkbox"/> UNSAT		<b>ARINC CODING:</b> <input type="checkbox"/> SAT <input type="checkbox"/> SAT/GOLD <input type="checkbox"/> UNSAT	
<b>FLIGHT INSPECTOR SIGNATURE:</b> bob s pressler @ 10/15/2020 16:04			<b>PRINTED NAME:</b> PRESSLER, ROBERT STEPHEN			<b>NOTAM INITIATED?</b> <input type="checkbox"/> YES <input checked="" type="checkbox"/> NO
<b>FLIGHT INSPECTOR REMARKS:</b> SAT.						
<b>IN-FLIGHT OBSTACLE REPORT</b>						
<b>OBSTRUCTION ID #:</b>	<b>COORDINATES OR LOCATION:</b>	<b>GNSS ALTITUDE (MSL):</b>	<b>BAROMETRIC ALTITUDE (MSL):</b>	<b>HEIGHT ABOVE GROUND LEVEL:</b>		

LOC I-ITH <b>108.7</b>	APP CRS <b>325°</b>	Rwy Idg TDZE Apt Elev <b>6602</b> <b>1099</b> <b>1099</b>
---------------------------	------------------------	--

# ILS or LOC RWY 32

## ITHACA TOMPKINS RGNL (ITH)

DME required.

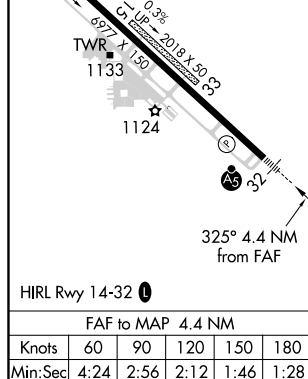
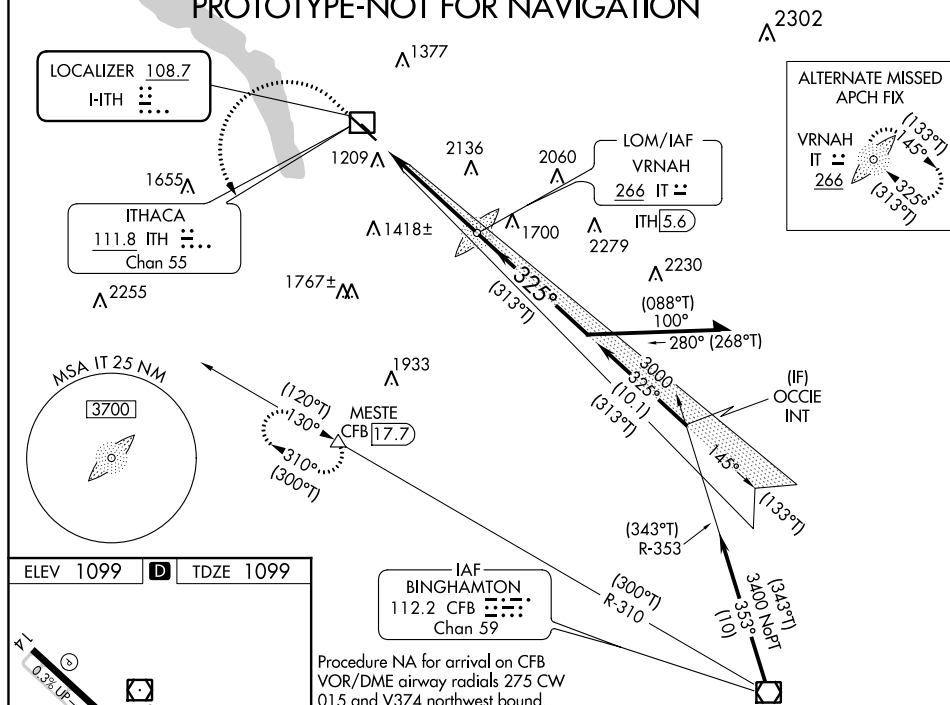
**⚠** Circling NA to Rwy 15 and 33. Inop table does not apply to S-ILS 32. When local altimeter setting not received, use Elmira altimeter setting and increase S-ILS 32 DA to 1433 feet and all MDA 100 feet; increase S-LOC 32 Circling Cat C/D visibility ½ SM. DME from ITH DME. Simultaneous reception of I-ITH LOC and ITH DME required. For inop ALS when using Elmira altimeter setting increase S-ILS 32 all Cats visibility to RVR 5000.



**MISSED APPROACH:** Climb to 2600 then climbing left turn to 4000 on heading 180° and CFB VOR/DME R-310 to MESTE/CFB VOR/DME 17.7 DME and hold.

ATIS <b>125.175</b>	ELMIRA APP CON ★ <b>124.3 257.8</b>	ITHACA TOWER ★ <b>119.6</b> (CTAF) <b>0</b>	GND CON <b>121.8</b>	CLNC DEL <b>121.8</b>	UNICOM <b>122.95</b>
------------------------	--	--	-------------------------	--------------------------	-------------------------

## PROTOTYPE-NOT FOR NAVIGATION



2600

↑

4000

hdg  
180°

CFB  
R-310

MESTE

△

\* LOC only.

VRNAH LOM

ITH 5.6

3500

2835

145°

(133°T)

Remain within 10 NM

3400

325°

(313°T)

3000

GS 3.20°

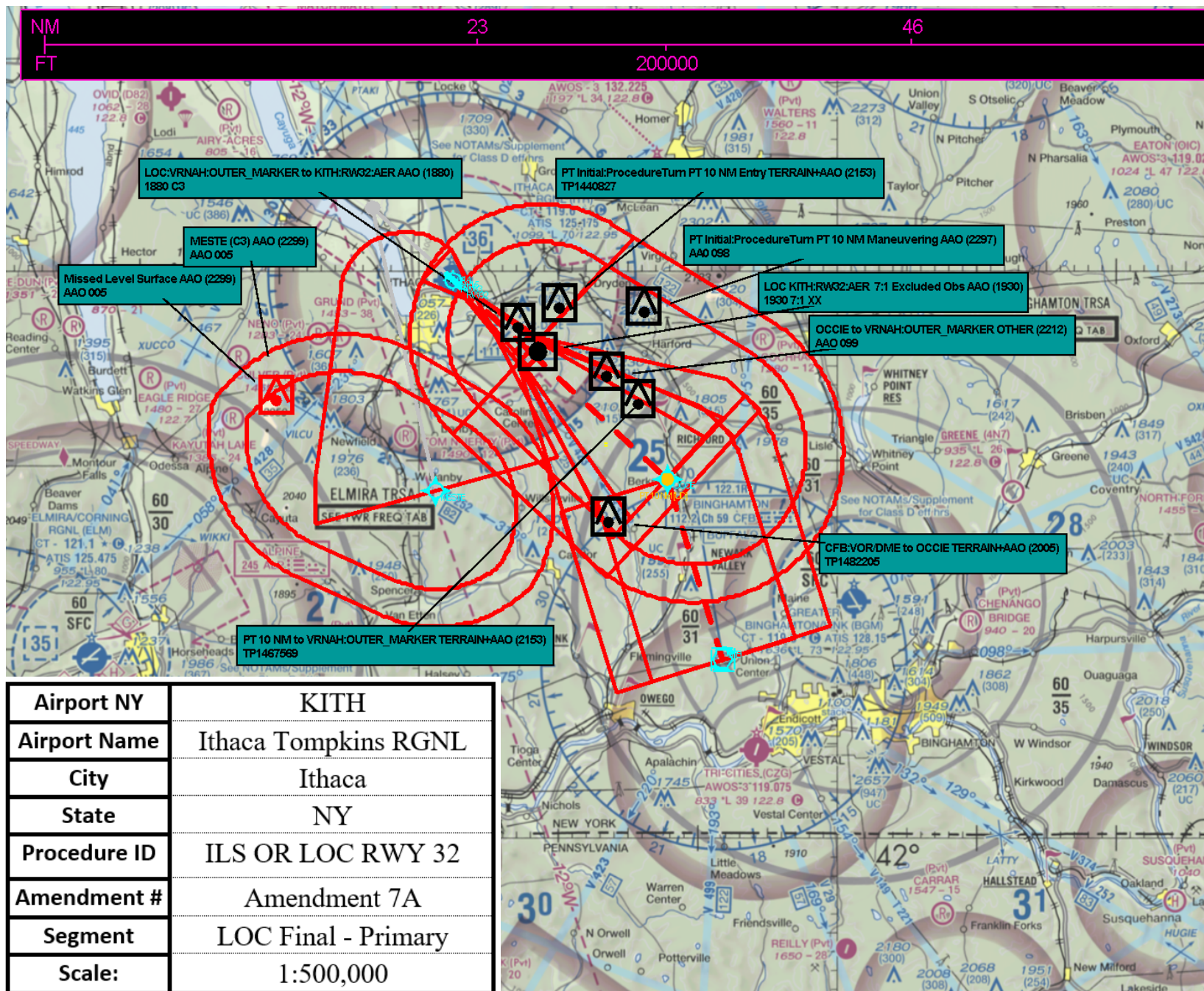
TCH 54

2.9 NM

2 NM

\* ITH 3.6

CATEGORY	A	B	C	D
S-ILS 32		1349/40	250 (300-¾)	
S-LOC 32	2140/40 1041 (1100-¾)	2140/55 1041 (1100-1)	2140-2½	1041 (1100-2½)
CIRCLING	2140-1¼ 1041 (1000-1¼)	2140-1½ 1041 (1000-1½)	2140-3 1041 (1100-3)	2440-3 1341 (1400-3)





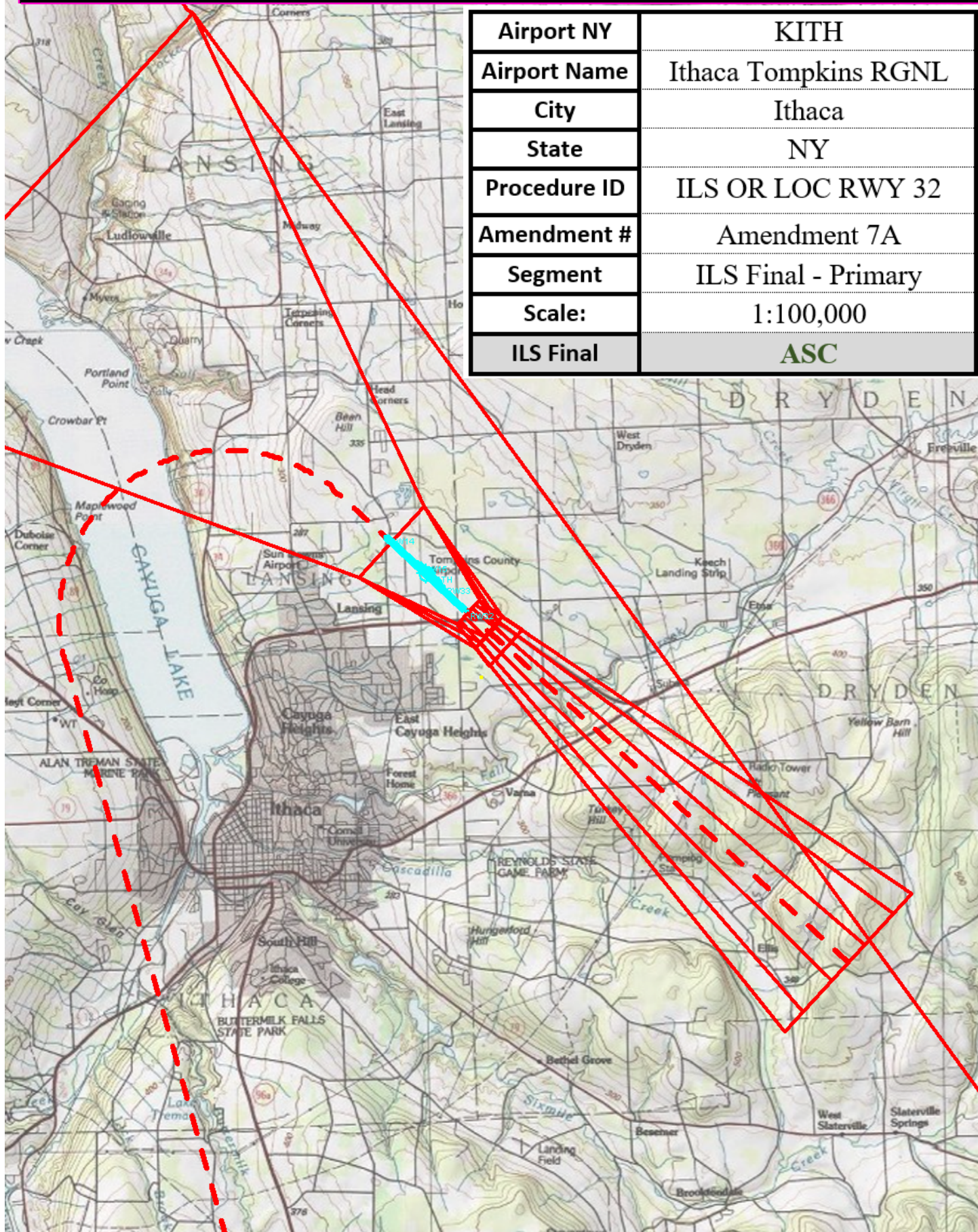
NM  
FT

4

8

50000

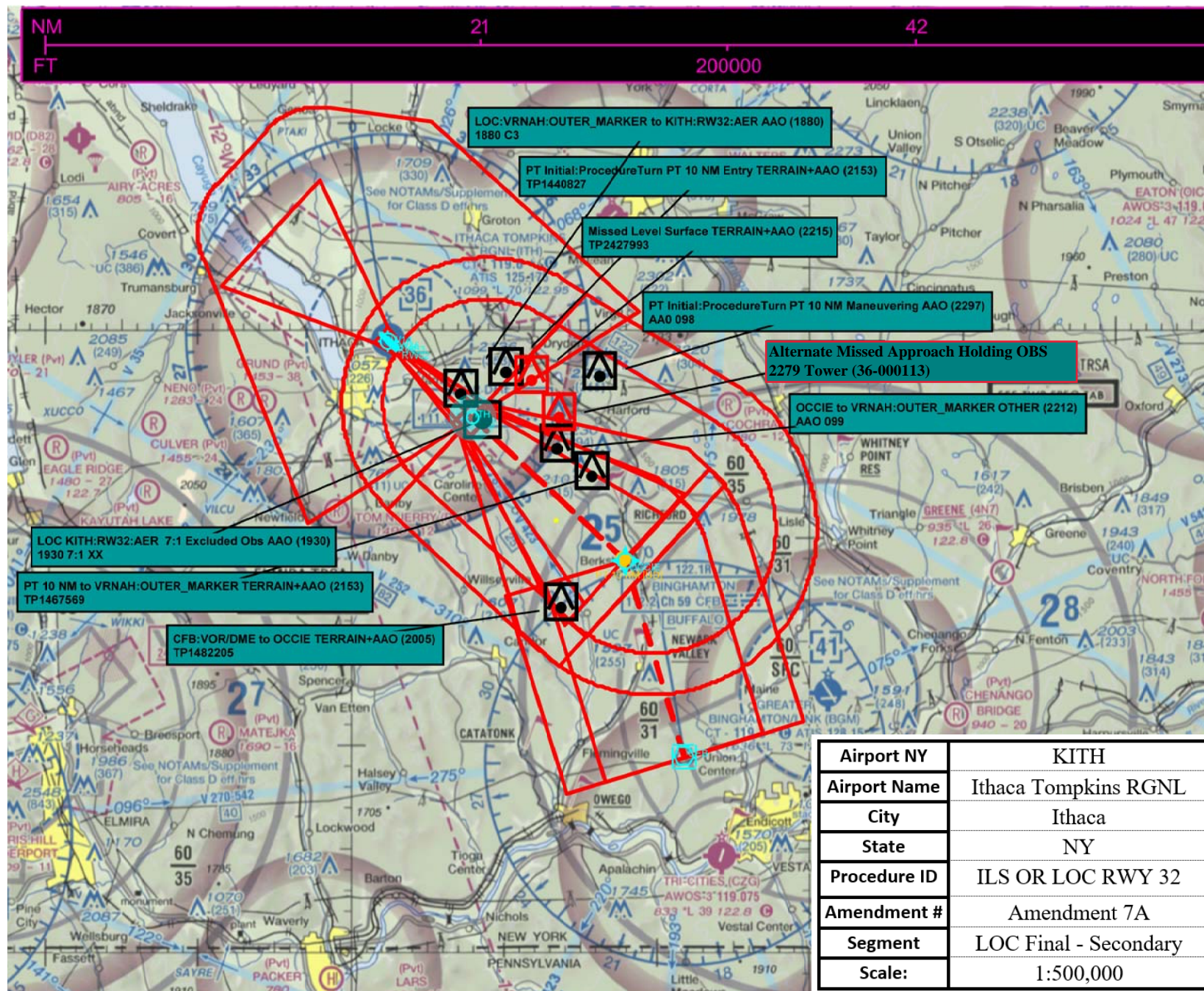
Airport NY	KITH
Airport Name	Ithaca Tompkins RGNL
City	Ithaca
State	NY
Procedure ID	ILS OR LOC RWY 32
Amendment #	Amendment 7A
Segment	ILS Final - Primary
Scale:	1:100,000
ILS Final	ASC



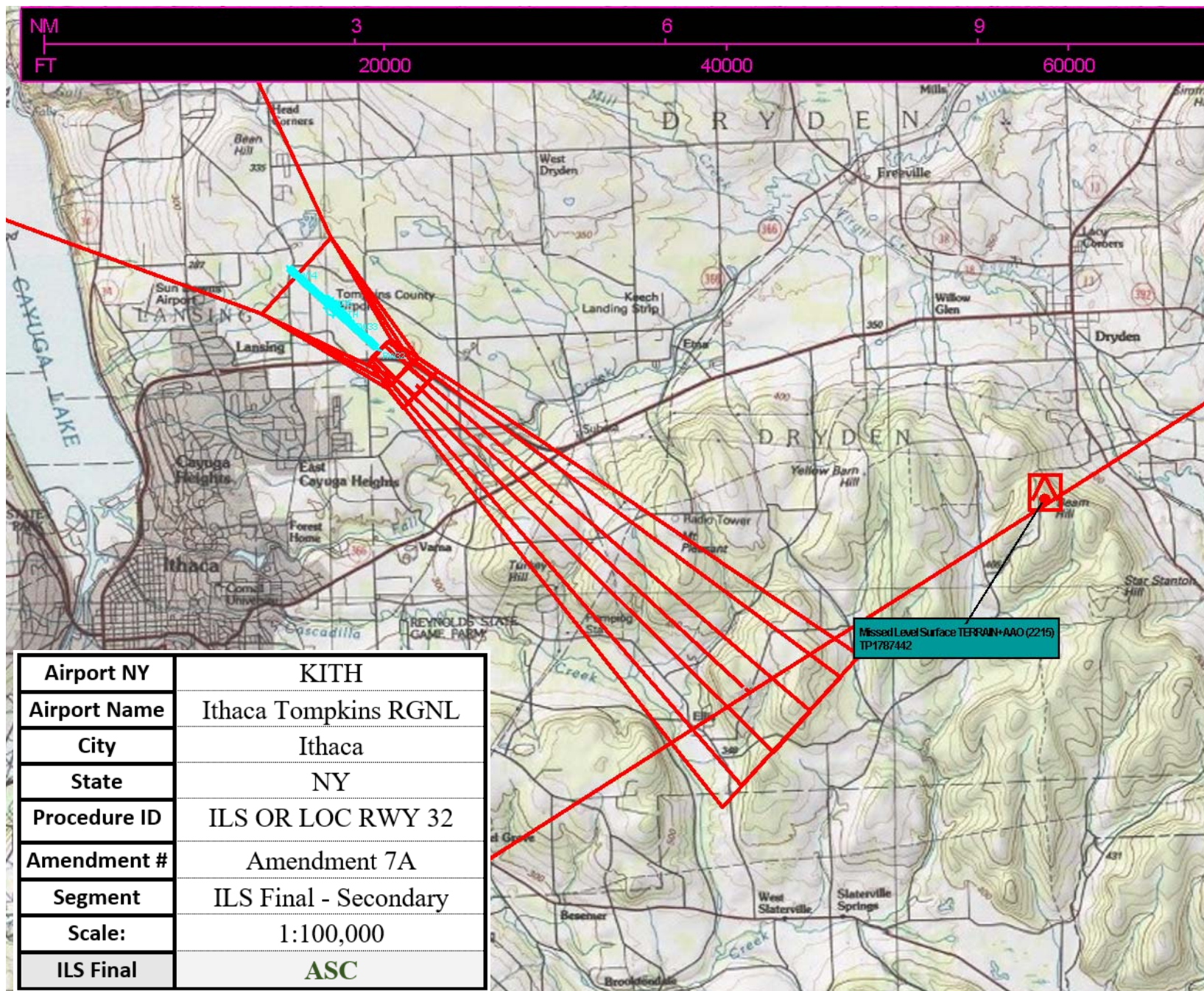


















ILS or LOC RWY 32  
ITHACA TOMPKINS RGNL (ITH)

MALSR

**MISSED APPROACH:**  
Climb to 2600 then climbing  
left turn to 4000 on CFB  
VOR/DME R-310 to  
MESTE/CFB VOR/DME  
17.7 DME and hold.

NE-2, 26 MAR 2020 to 23 APR 2020

NE-2 26 MAR 2020 to 23 APR 2020

Diagram illustrating the HIRL Rwy 14-32 approach. The runway is shown with a heading of 325° and a length of 4.4 NM from the FAF. The diagram includes various navigation aids and distances:

- 0.3% UP
- 0.3%
- 5.1
- 3.2
- TWR 1133
- 1124
- 325° 4.4 NM from FAF

FAF to MAP 4.4 NM					
Knots	60	90	120	150	180
Min:Sec	4:24	2:56	2:12	1:46	1:28

IAF  
BINGHAMTON  
112.2 CFB  
Chan 59

Procedure NA for arrival on CFB  
VOR/DME airway radials 275 CW  
015 and V374 northwest bound.

2600 4000 MESTE  
CFB R-310

LOM  
ITH 5.6  
2835  
145°  
3400  
325°  
3000  
GS 3.20°  
TCH 54

\* LOC only. \* ITH 3.4  
TUDVE ITH 1.3  
0.5 2.1 NM 2.2 NM

CATEGORY	A	B	C	D
S-ILS 32		1349/40	250 (300-¾)	
S-LOC 32	2040/40	941 (1000-¾)	2040-2	941 (1000-2)
CIRCLING	2040-1¼	941 (1000-1¼)	2040-2¾ 941 (1000-2¾)	2440-3 1341 (1400-3)