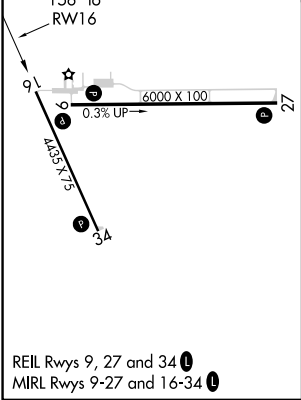
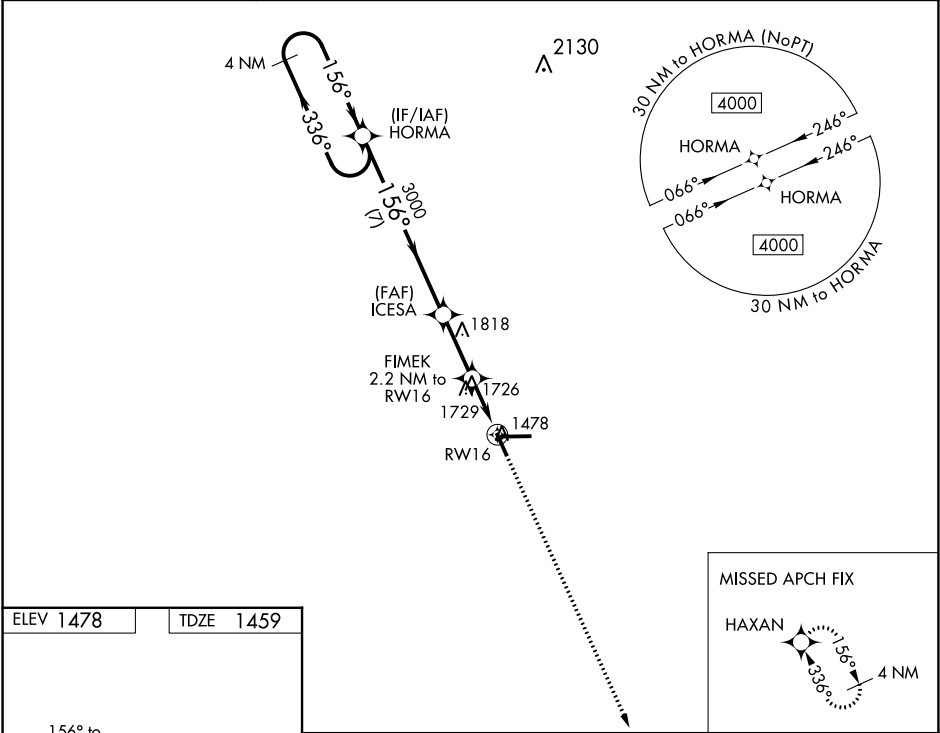


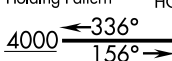
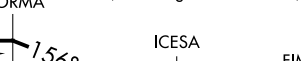

WAAS CH 86231 W16A	APP CRS 156°	Rwy Idg TDZE 1459 Apt Elev 1478
--	------------------------	---

RNAV (GPS) RWY 16
TAYLOR COUNTY (MDZ)

RNP APCH.	When local altimeter setting not received, use Merrill altimeter setting and increase all MDA 100 feet and increase all Cat C/D visibility ¼ mile. Rwy 16 helicopter visibility reduction below ¾ SM NA. VDP NA when using Merrill altimeter setting.	MISSED APPROACH: Climb to 4000 direct HAXAN and hold.
-----------	---	--

AWOS-3 119.025	MINNEAPOLIS CENTER 124.4 317.7	UNICOM 122.8 (CTAF) 0
--------------------------	--	---------------------------------



4 NM Holding Pattern		VGSI and descent angles not coincident (VGSI Angle 3.00/TCH 37).		4000	HAXAN
				4000	
CATEGORY		A	B	C	D
LP MDA	2040-1	581 (600-1)	2040-1¾	581 (600-1¾)	
LNAV MDA	2060-1	601 (600-1)	2060-1¾	601 (600-1¾)	
CIRCLING	2060-1	582 (600-1)	2060-1¾ 582 (600-1¾)	2080-2 602 (700-2)	

KMDZ
TAYLOR COUNTY
MEDFORD, WISCONSIN
100K CIRCLING
ALL PROCEDURES

Circling CAT D TOWER (1818)
55-000993

Circling CAT B/C TOWER (1729)
55-086583

Circling CAT A TREE (1588)
55-030297

