

Flight Procedures Cover Page	Task Action: FLIGHT CHECK	Task Type: IAP	Estimated Chart Date: 02/20/2025	APWS Task ID: 9A12C5BDBED448128E447C6721CB2E98	APWS Project ID: C35C14F5D76B46A28A2FEB3EAB7EED84
Procedure: RNAV (GPS) RWY 20 AMDT 1		Enroute: NO	Specialist: Bruce, Richard		Agreement Number:
Airport ID: KBYI			Airport City: BURLEY		State: ID
Facility ID:	Facility Type:	Flight Inspection Remark Type: New FC Slot			
<div>Procedure Comments:</div> <div>CANCELS FDC NOTAM 3/8819.</div> <div>ACTIVE DATA USED FOR KBYI AIRPORT AND RUNWAYS.</div> <div>CONTACT RAKE MCGRAW, AJV-A422, (405) 954-8711.</div> <div>10/22/24: THIS IS AN UPDATED COPY OF THE FORM DEVELOPED ON 09/18/24. 8260-3: 1. NOTES: DELETED "CHART NOTE: CIRCLING RWY 2, 24 NA AT NIGHT." 2. NOTES: ADDED "CHART NOTE: PROCEDURE NA AT NIGHT."</div> <div>10/29/24: THIS IS AN UPDATED COPY OF THE FORM DEVELOPED ON 09/18/24. 8260-3: 1. ADDITIONAL FLIGHT DATA: DELETED "JAMID TO RW20: 3.00/40." 2. ADDITIONAL FLIGHT DATA: ADDED "CHART PROFILE NOTE: VISUAL SEGMENT - OBSTACLES."</div> <div><div>QUALITY 41 CHECKED</div><div>QUALITY 39 CHECKED</div></div>					

BURLEY, IDAHO

AL-68 (FAA)

FIG

APP CRS	Rwy Idg	3787
203°	TDZE	4152
	Apt Elev	4154

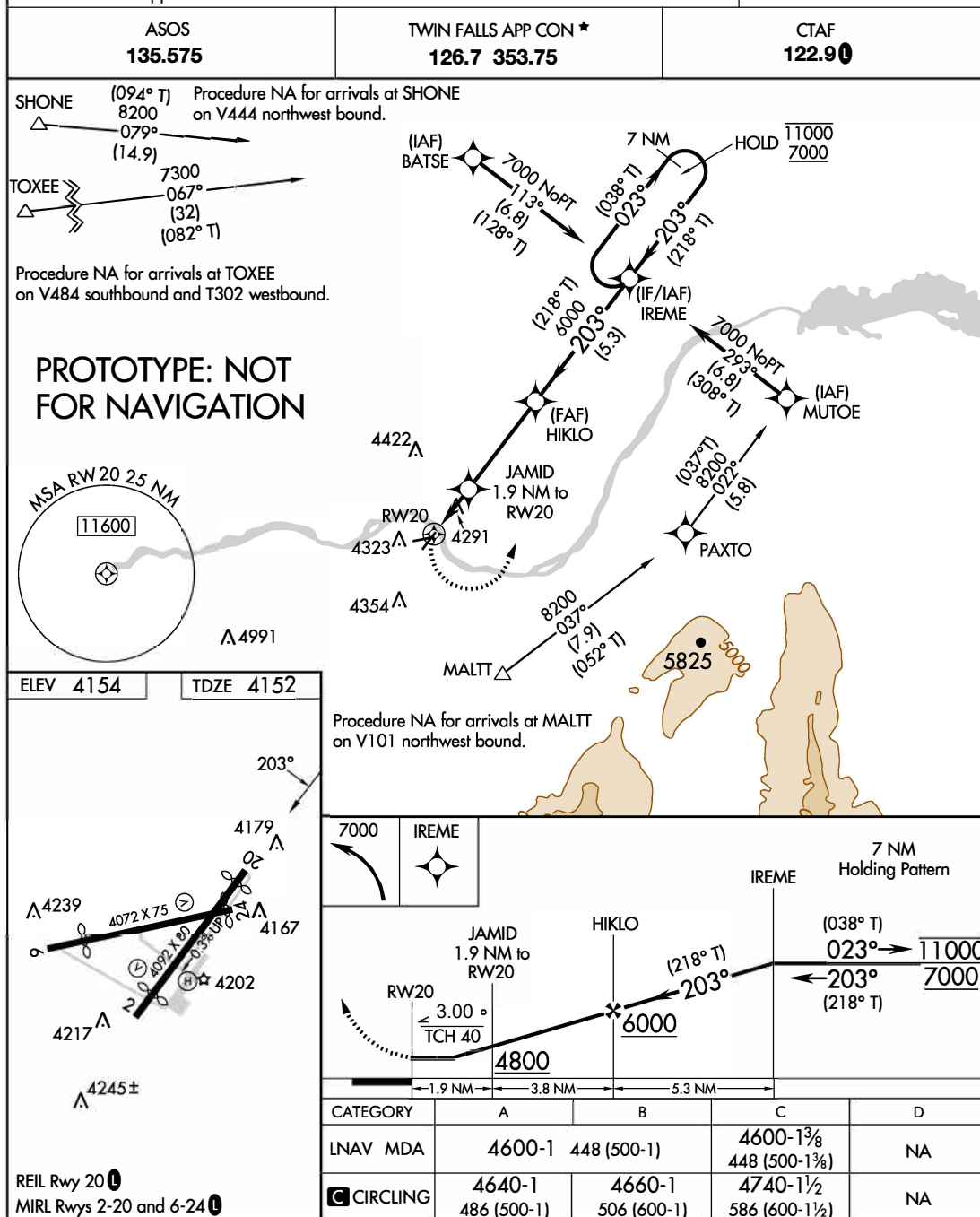
# RNAV (GPS) RWY 20

BURLEY MUNI (BYI)

RNP APCH-GPS.

⚠ Circling Rwy 2, 24 NA at night. Rwy 20 helicopter visibility reduction below 1 SM NA. When local altimeter setting not received, use TWF altimeter setting and increase all MDAs 80 feet and visibility Cts C 1/8 SM and Circling visibility Cat C 1/4 SM. Exhaust stacks located along Rwy 20 extended final approach course approximately 2345 ft from approach end. When Circling Rwy 20, exhaust stacks located along Rwy 20 extended final approach course approximately 2345 ft from approach end.

MISSED APPROACH: Climbing left turn to 7000 direct IREME and hold, continue climb-in-hold to 7000.



BURLEY, IDAHO

Amdt 1 FIG

42°33'N-113°46'W

BURLEY MUNI (BYI)

# RNAV (GPS) RWY 20

AUTOMATED AL-68 RNAV (GPS) RWY 20  
AUTOMATED AL-68 RNAV (GPS) RWY 20

NW-1  
23 SEP 2024  
COMPILER: CG  
REVIEWER:  
DBL CHKR:  
EFF: FIG

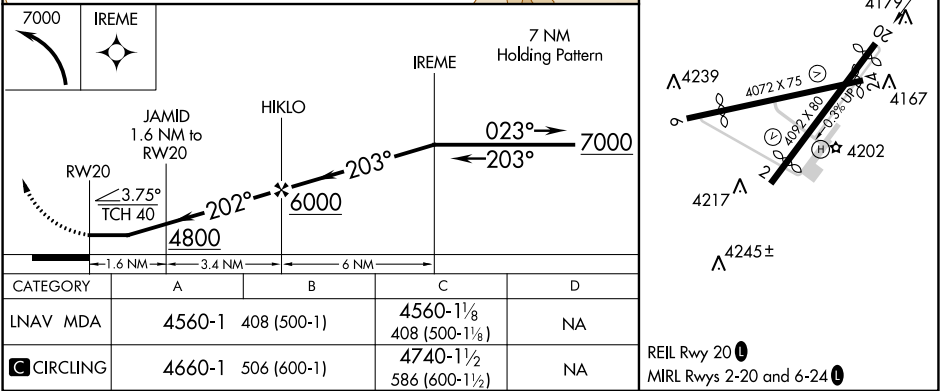
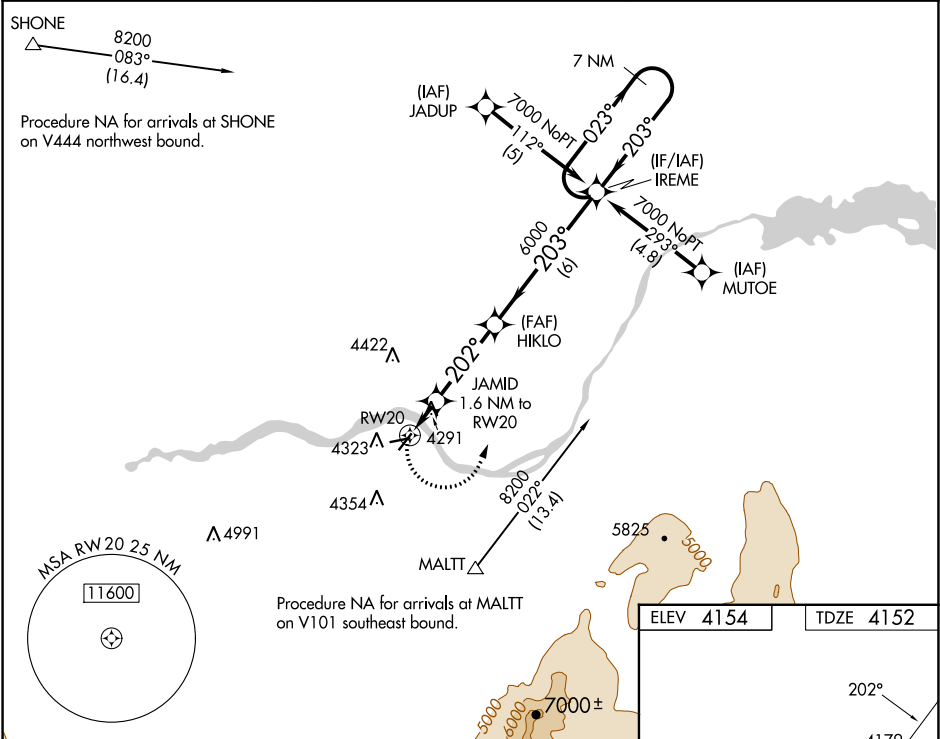
APP CRS	Rwy Idg	3787
202°	TDZE	4152
	Apt Elev	4154

OLD

RNAV (GPS) RWY 20  
BURLEY MUNI (BYI)

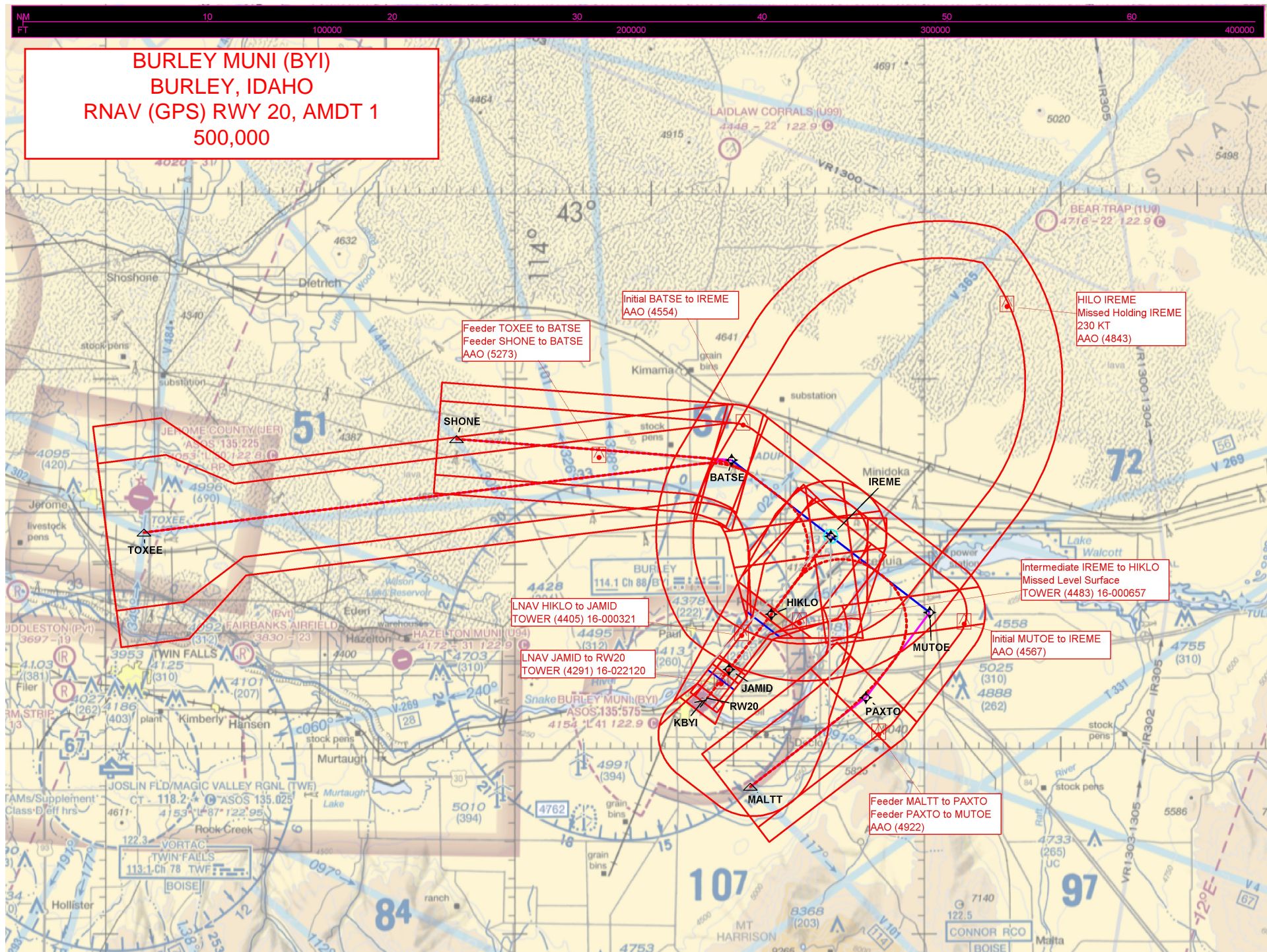
RNP APCH-GPS.	MISSED APPROACH: Climbing left turn to 7000 direct IREME and hold, continue climb-in-hold to 7000.
Procedure NA at night. Rwy 20 helicopter visibility reduction below 1 SM NA.	

ASOS 135.575	TWIN FALLS APP CON ★ 126.7 353.75	CTAF 122.90
-----------------	--------------------------------------	----------------

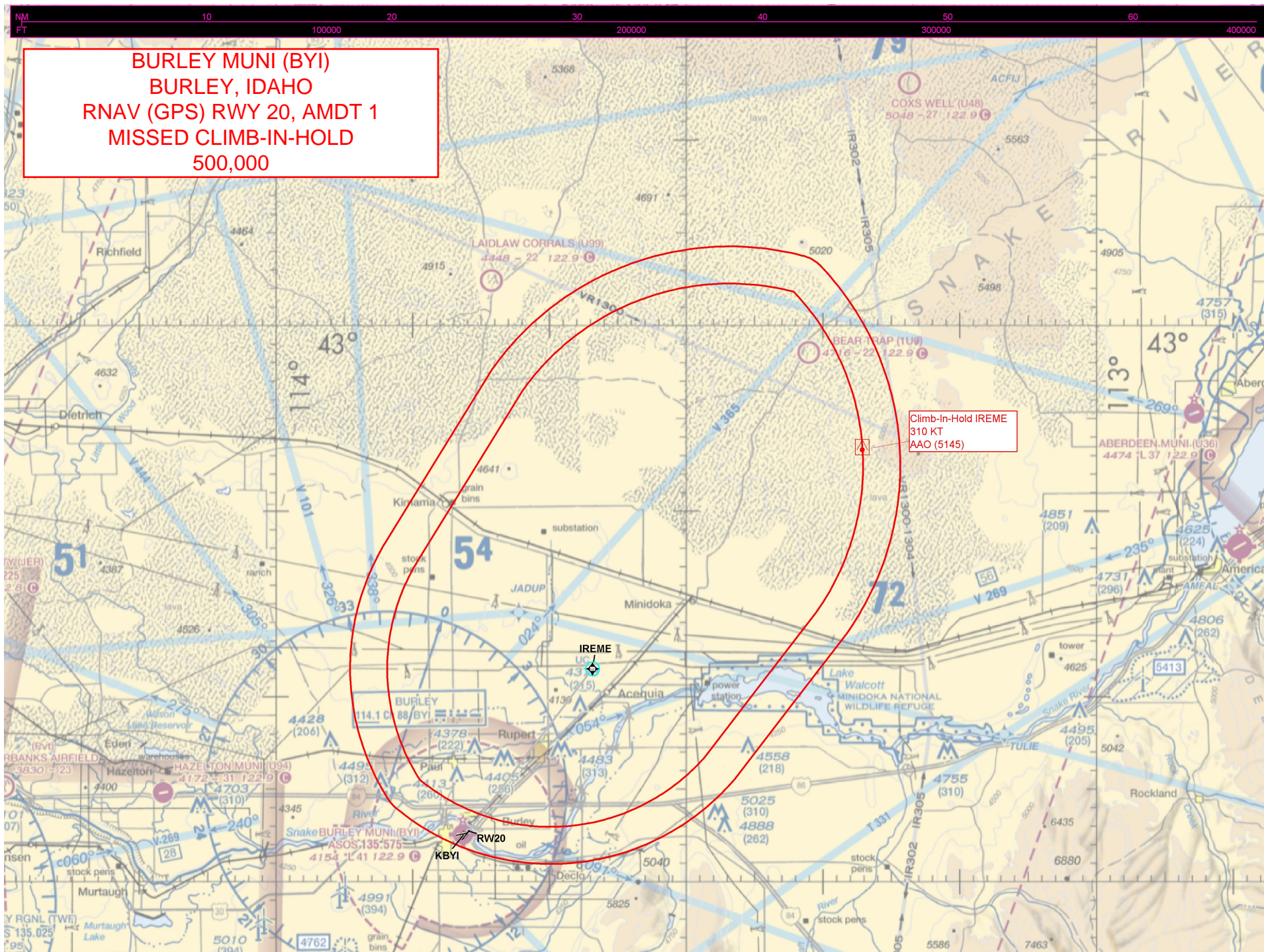




BURLEY MUNI (BYI)  
BURLEY, IDAHO  
RNAV (GPS) RWY 20, AMDT 1  
500,000









BURLEY MUNI (BYI)  
BURLEY, IDAHO  
RNAV (GPS) RWY 20, AMDT 1  
LNAV, CIRCLING  
100,000

Missed Level Surface  
TOWER (4483) 16-000657

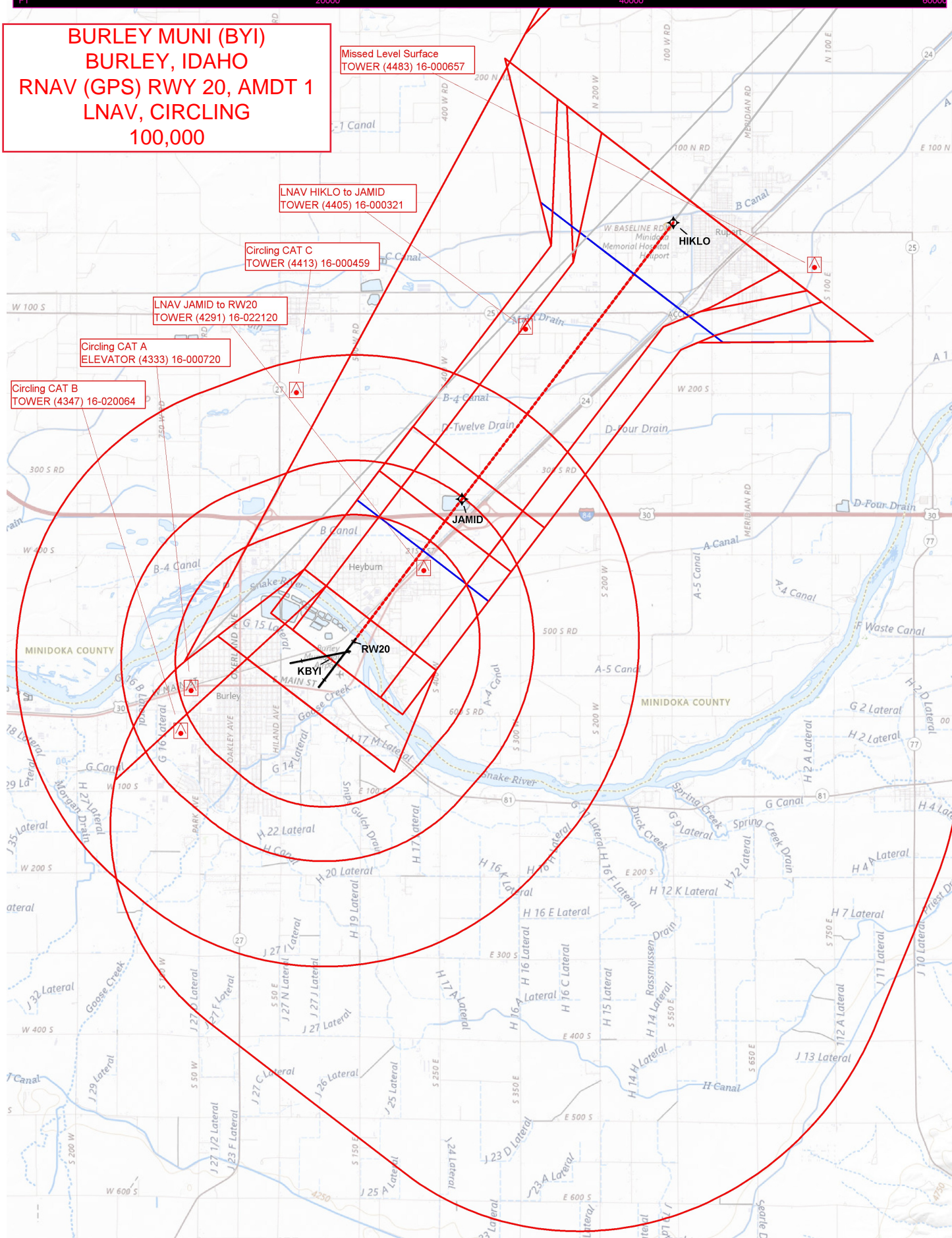
LNAV HIKLO to JAMID  
TOWER (4405) 16-000321

Circling CAT C  
TOWER (4413) 16-000459

LNAV JAMID to RW20  
TOWER (4291) 16-022120

Circling CAT A  
ELEVATOR (4333) 16-000720

Circling CAT B  
TOWER (4347) 16-020064



<b>FIPC BASIC FORM</b>						
<b>PROCEDURE:</b> RNAV (GPS) RWY 20 AMDT 1			<b>AIRPORT NAME:</b> BURLEY MUNI		<b>AIRPORT ID:</b> KBYI	<b>SPECIAL CONTROL NO:</b> SG-09-260-24
<b>FAC ID:</b> KBYI20.01		<b>CITY:</b> BURLEY			<b>ST:</b> ID	<b>ORIG CHART DATE:</b> 02/20/2025
<b>DFL TYPE:</b> PROC/G	<b>THIRD PARTY:</b> <input type="checkbox"/> YES	<b>EST. TIME ON SITE:</b> 0.5	<b>REIMB. NUMBER:</b>	<b>PTS TASK ID:</b> 9A12C5BDBED448128E447C6721CB2E98		
<b>PREFLIGHT NOTES</b>						
<b>REVIEWER:</b> joel p murphy					<b>DATE:</b> 10/24/2024	
<b>COMMENTS:</b>					<b>CHECK ONE:</b>	
					<input checked="" type="checkbox"/> FLT CK REQ <input type="checkbox"/> NFCR <input type="checkbox"/> REJECT	
					<div style="display: flex; justify-content: space-between;"> <span></span> <span>YES</span> <span>NO</span> </div>	
					<b>CPV COMPLETE?</b>	
				<b>X</b>		
<b>PROCEDURE RESULTS</b>						
<b>INSPECTION DATE:</b> 10/23/2024	<b>CREW #:</b> VN451	<b>N #:</b> N87	<b>INSTRUMENT PROCEDURE STATUS:</b> <input type="checkbox"/> SAT <input checked="" type="checkbox"/> SAT W/CHANGES <input type="checkbox"/> UNSAT		<b>ARINC CODING:</b> <input checked="" type="checkbox"/> SAT <input type="checkbox"/> SAT/GOLD <input type="checkbox"/> UNSAT	
<b>FLIGHT INSPECTOR SIGNATURE:</b> joel p murphy @ 10/24/2024 15:32			<b>PRINTED NAME:</b> MURPHY, JOEL PATRICK			<b>NOTAM INITIATED?</b> <input type="checkbox"/> YES <input checked="" type="checkbox"/> NO
<b>FLIGHT INSPECTOR REMARKS:</b> VDA UNSAT. The VDA will not clear the stacks on the factory. VDA and TCH information should not be charted. Visual Segment obstacles note recommended.						
<b>IN-FLIGHT OBSTACLE REPORT</b>						
<b>OBSTRUCTION ID #:</b>	<b>COORDINATES OR LOCATION:</b>	<b>GNSS ALTITUDE (MSL):</b>	<b>BAROMETRIC ALTITUDE (MSL):</b>	<b>HEIGHT ABOVE GROUND LEVEL:</b>		