



Flight Procedures Cover Page	Task Action: P-NOTAM	Task Type: IAP	Estimated Chart Date: 04/21/2022	APWS Task ID: 9945B820DB664167911BE93B25A78389	APWS Project ID: 1658D0C20A0E46DB83DE21E6D2A09D32
Procedure: RNAV (GPS) RWY 8 AMDT 1B		Enroute: NO	Specialist: Sickels, Dale		Agreement Number:
Airport ID: KBCK			Airport City: BLACK RIVER FALLS		State: WI
Facility ID:	Facility Type:	Flight Inspection Remark Type:			
<p>Procedure Comments: Order 8260.3, Chapter 2, New Circling Criteria Applied.</p> <p>Contact Jason Kretschmer, AJV-A421, 405-954-4019</p> <div style="display: flex; justify-content: space-between; align-items: center;"> <div style="text-align: center;"> <p><i>Digitally signed by</i> <b>JASON KRETSCHMER</b> Mar 01, 2022</p> </div> <div style="text-align: right;">   </div> </div>					

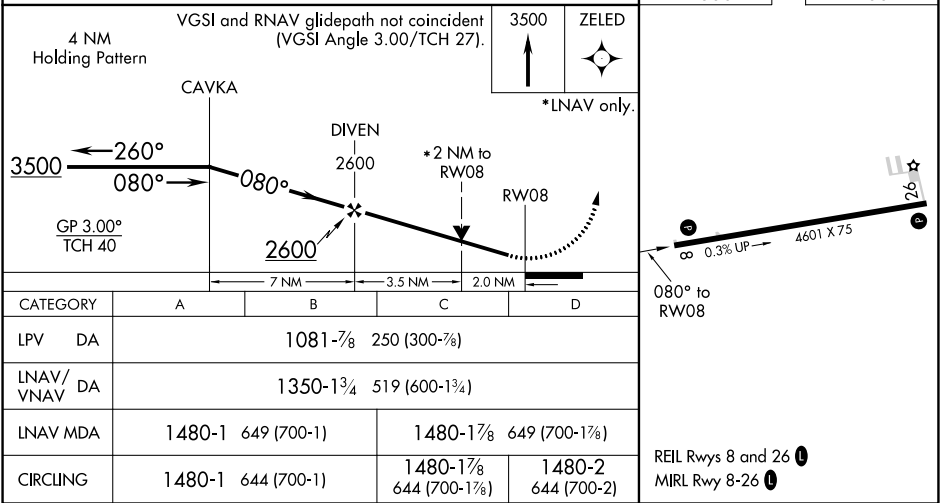
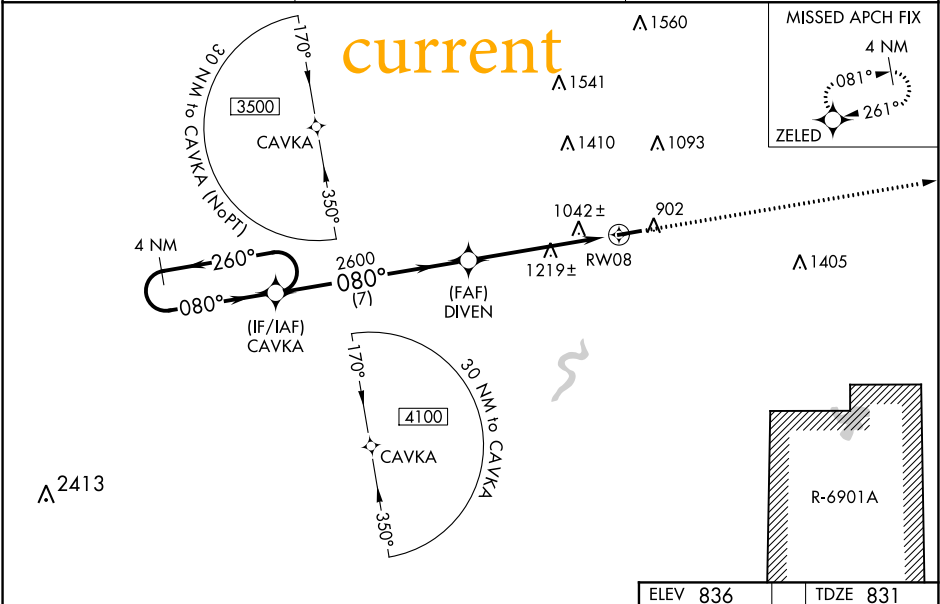
⚠

Baro-VNAV NA when using La Crosse altimeter setting. For uncompensated Baro-VNAV systems, LNAV/VNAV NA below -16°C (4°F) or above 38° C (100°F). DME/DME RNP-0.3 NA. Visibility reduction by helicopters NA. VDP NA with La Crosse altimeter setting. When local altimeter setting not received, use La Crosse altimeter setting and increase all DA 91 feet and all MDA 100 feet and increase LPV all Cats visibility to 1½ mile, LNAV/VNAV all Cats to 2¼ mile, LNAV Cat B to 1¼ mile, Cat C/D to 2 mile, and Circling Cat B to 1¼ mile, Cat C to 2¼ mile, and Cat D to 2½ mile.

MISSED APPROACH:

Climb to 3500 direct ZELED and hold.

AWOS-3PT <b>119.125</b>	MINNEAPOLIS CENTER <b>128.6 363.0</b>	CTAF <b>122.9 0</b>
----------------------------	--	------------------------





AIRPORT ID	KBCK
AIRPORT NAME	BLACK RIVER FALLS AREA
CITY	BLACK RIVER FALLS
STATE	WI
Proc ID:	RNAV (GPS) RWY 8
Amdt #	1B
Scale	1:100,000

NEW RADII	
CAT A	1.30
CAT B	1.83
CAT C	2.88
CAT D	3.77

